

## Product datasheet for RC222480

### HISPPD2A (PIIP5K1) (NM\_014659) Human Tagged ORF Clone

#### Product data:

Product Type:	Expression Plasmids
Product Name:	HISPPD2A (PIIP5K1) (NM_014659) Human Tagged ORF Clone
Tag:	Myc-DDK
Symbol:	HISPPD2A
Synonyms:	HISPPD2A; hsVIP1; IP6K; IPS1; VIP1
Mammalian Cell Selection:	Neomycin
Vector:	pCMV6-Entry (PS100001)
E. coli Selection:	Kanamycin (25 ug/mL)
ORF Nucleotide Sequence:	>RC222480 representing NM_014659 Red=Cloning site Blue=ORF Green=Tags(s)

TTTTGTAATACGACTCACTATAGGGCGCCGGGAATTCGTCGACTGGATCCGGTACCGAGGAGATCTGCC  
GCC**CGATCGCC**

ATGTGGTCATTGACGGCCAGTGAGGGCGAGAGTACCACGGCCCACTTCTTCTTGGAGCTGGAGATGAGG  
GGCTGGGCACCCGTGGAATAGGCATGAGGCCAGAAGAGAGTGACAGCGAGCTCCTTGAGGATGAGGAGGA  
TGAAGTGCCCTCTGAACCTCAGATCATTGTTGGCATCTGTGCCATGACCAAGAAATCCAAGTCCAAGCCA  
ATGACTCAAATCCTAGAGCGACTCTGCAGATTTGACTACCTGACTGTTGTATTCTGGGAGAAGATGTAA  
TCCTTAATGAACCTGTGAAAACCTGGCCATCTGCCACTGCCTCATCTTTCCACTCCAAGGCTTTCC  
TCTGGACAAGCTGTTGCTTACTCCAAGCTTCGAAACCCCTTTCTTATCAATGATCTGGCCATGCAGTAT  
TACATCCAAGATAGGAGGGAGGTGTACCGGATCCTGCAGGAAGAGGGTATTGATCTGCCTCGATATGCTG  
TGCTCAACCGTGATCCTGCCCGCCTGAGGAATGCAACCTGATAGAAGGTGAAGACCAAGTAGAGGTCAA  
TGGAGCTGTCTTTCCCAAGCCCTTTGTGGAGAAGCCAGTGAGTGAGGAGGACCAATGTTTACATCTAC  
TACCCAGCTCAGCTGGAGGAGGAAGCCAGCGTCTCTTTCGTAAGATTGGCAGCCGAAGCAGTGTCTACT  
CTCCTGAGAGCAGCGTCCGAAAGACGGGGTTCGTACATCTATGAGGAGTTATGCCAACAGATGGCACAGA  
TGTC AAGGTGATACAGTGGGGCAGATTATGCCATGCTGAAGCTAGAAAATCTCCAGCTTTGGATGGG  
AAGTTGAACGAGACAGTGAGGGGAAAGAGATTCCGATATCCAGTATGCTGACTGCCATGGAAAAGCTGG  
TGGCCAGGAAAAGTCTGCGTAGCTTTCAAGCAAACAGTTTGTGGATTTGACCTTCTTCGTGCCAATGGTCA  
TTCTTTGTGTGTGATGCAATGGCTTTAGTTTTGTCAAGAACTCGATGAAATACTACGATGACTGTGCC  
AAGATTCTGGGAAACACCATAATGCGGGAGCTTCCCCACAGTTCCAGATTCATGGTCCATCCCCACGG  
AGGCTGAGGACATTCCATTGTTCCACCACATCTGGCACTATGATGGAACCTCGTTGTGTCATTGCAAT  
TATTCGTCATGGGATCGTACTCCCAAGCAGAAGATGAAGATGGAAGTGAACACCCAAGGTTTTTTGCT  
CTGTTTGA AAAACATGGTGGCTACAAGACAGGGAAATTTAAACTCAAGCGACCTGAGCAGCTCCAGGAGG  
TGCTGGATATCACAAGGCTGTTGTTGGCTGAAGTGGAGAAAGAACCAGGTGGTGAGATCGAGGAGAAGAC  
TGGAAAAC TAGAGCAGCTGAAGTCTGTACTGGAGATGTATGGTCACTTCTCAGGATAAACCGGAAGGTA



[View online »](#)

CAATTGACTTACTACCCTCATGGAGTAAAAGCTTCTAATGAGGGGCAAGATCCACAGAGGGAACTCTGG  
CCCCATCTCTGTTGCTGGTACTGAAGTGGGGTGGAGAAGTACTCCTGCTGGCCGTGTTCAAGGCTGAGGA  
GCTGGGGCGAGCTTTTCGCTGCATGTACCCTGGAGGACAGGGTACTATGCTGGCTTCCCTGGTTGTGGG  
CTGCTTCGTCTCCATAGCACTTTCCGCCACGATCTCAAGATCTATGCCTCTGATGAGGGTCGTGTTGAGA  
TGACTGCTGCTGCCTTCGCCAAGGGCTTCTGGCTCTAGAAGGGGAGCTGACACCCATTTTGGTGCAAT  
GGTGAAGAGTGCCAACATGAATGGGCTACTGGACAGCGATGGGGATTCCCTGAGCAGCTGCCAGCACCGG  
GTTGAAGGCTCGGCTGCACCATATTTACACAGCAGGATGCGCCCTTTGGCCCTGAGGACTACGATCAGCTGG  
CTCCCACCAGAAGTACTTCCCTGCTCAACTCCATGACTATCATCCAGAATCCTGTGAAGGTCTGTGATCA  
GGTATTTGCCCTGATCGAAAACCTCACCCACCAGATCCGGGAACGAATGCAGGACCCAGGTCTGTAGAC  
CTGCAGCTCTACCACAGTGAGACTAGAGCTAATGCTACAGCGTTGGAGCAAGCTGGAGCGTACTTTT  
GACAGAAGAGTGGGCGCTATGATATCAGTAAGATCCCTGACATCTATGACTGTGTCAAGTATGATGTGCA  
GCACAATGGGAGTCTGGGACTTCAAGGCACAGCAGAGTTGCTCCGTCTCTAAGGCACTGGCTGATGTG  
GTCATTTCCCAGGAGTACGGGATCAGTCGGGAGGAGAACTGGAAATTGCTGTGGGCTTCTGTCTCCAC  
TGTTGCGGAAGATACTACTTGACCTGCAGAGAACCACAGGATGAGTCTGTCAACAAGTGCATCCCCT  
GTACTCCCAGGCGTCTCTCCCAGGTCGCCACGTTTGAACGCGTCTCTATTTACCAGTGAGAGCCAT  
GTCCACTCCCTGCTCAGTGTCTTCCGTTATGGAGGACTTCTTGATGAGACCCAGGATGCACAATGGCAGC  
GAGCTTTGGATTATCTTAGTGCCATCTCAGAGCTTAACTACATGACCCAGATTGTCATCATGCTTTATGA  
GGACAACACACAGGATCCCTTATCAGAGGAACGGTTCCATGTGGAGCTACACTTCAGCCCCGGAGTGAAA  
GGTGTGAGGAAGAAGGCAGTGGCCCGGCTGGCTGTGGATTCCGTCCAGCCTCTTCTGAGAATGAGGAGA  
TGAAAACCAACCAAGGCAGTATGGAGAACCTGTGTCCAGGAAAGGCATCAGATGAACCAGACCCGGCATT  
GCAGACTTCACCCAGCCTCTGAGGGCCCTGGCTTCCGAGGAGATCACCCCTATTGTAACCCGAAAA  
GCTGGTTCCATGGAGTACTTTCTGAGACTTCACTCCGAGGCCTGGTGGCTACCGGCTCTTTTCATCTT  
CACGGCCACCCACAGAAATGAAGCAGAGTGGCTAGGCTCACAGTGCACAGGGCTGTTCCAGCACCAGT  
GCTGGGTGGCTCCTCCAGTGCCCGAATCTTCAGGACTACGCCCGCAGCCATGGCAAAAAGCTACCACCT  
GCCAGTCTGAAGCACCGAGATGGGTTTGAAGGGTGTTCATGGTGCCTACCATCTACCCTCTGAAAAAC  
TGCATAATGCCCTTTCCCTACGTCAAGTGAAGTGAATTCTTGAGTAGAGTCTGCCAGCGCCACACTGATGC  
CCAGGCACAGGCATCTGCAGCCCTTTTGATTCCATGCACAGCAGCCAGGCTCAGATAACCCATTTTCT  
CCACCACGTACTTTCATTACCTCCCCTGCAACTCCAGCAGCGCTCTGAGAAGCCCCCTTGGTACAGCA  
GTGGCCCTTCTAGCACTGTGTCCAGTGTGCTCCTTCTCCCCTACTACAGTAGATGGTAACTCCCAATT  
TGGCTTCAGTGATCAACCCTCCCTAAATTCACACGTGGCTGAAGAACATCAAGGCCTTGGGCTGCTCCAG  
GAGACCCCTGGGAGTGGAGCACAAAGAGCTCTCCATAGAAGGGGAGCAAGAGCTTTTTGAACCAAAATCAGT  
CCCCACAGGTGCCACCTATGAAAACCAGCCAGCCATACGAGGAGGTGAGCCAGCCATGTCAGGAGGTCCC  
TGACATCAGCCAGCCATGCCAGGACATTTCTGAGGCGCTCAGCCAGCCATGTCAGAAGGTCCCTGACATC  
AGCCAGCAATGCCAGGAGAACCATGACAATGGTAACCACACATGCCAGGAGGTCCCTCACATCAGCCAGC  
CATGCCAGAAGTCCAGCCAATGTGCCAGAAAGTCTCTGAGGAAGTTTGGCAGCTATGCTGGGAAACTC  
CGAGGAGGTGAGCCAGCCATGCCAGGGGCTCTCTGTGGAGGTTGGCAAGCTGGTCCATAAGTTCCATGTA  
GGGTTGGTAGCTTGGTCCAGGAAACCTTGTAGAAGTTGGCAGCCAGCTGAAGAGATCCCTGAGGAGG  
TCATCCAGCCATACCAGGAGTTCTCTGTGGAGGTTGGCAGGCTGGCCAGGAGACTTCTGCGATCAATCT  
GTTATCTCAGGGCATCCCTGAGATTGATAAACCATCCCAAGAGTCCCTGAGGAGATTGATCTGCAGGCC  
CAGGAGTCCCTGAGGAGATAAAT

AGCGGACCGACGCTACGCGCCGCTCGAGCAGAACTCATCTCAGAAGAGGATCTGGCAGCAAATGATATCC  
TGGATTACAAGGATGACGACGATAAGGTTTAA

**Protein Sequence:** >RC222480 representing NM\_014659  
 Red=Cloning site Green=Tags(s)

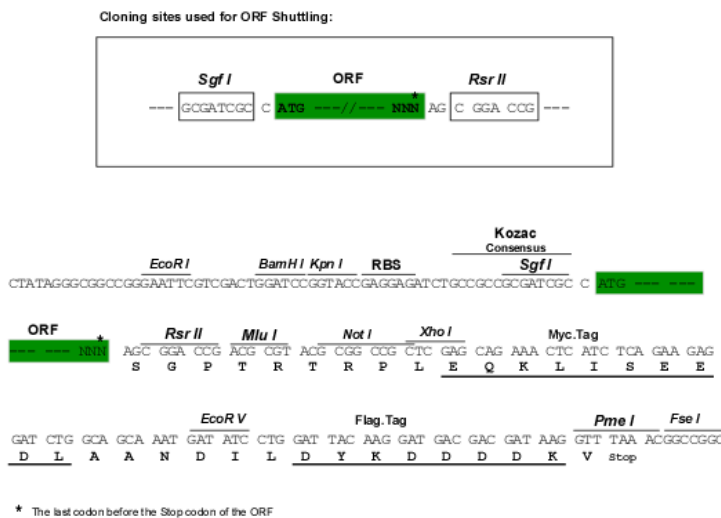
```

MWSLTASEGESTTAHFFLGAGDEGLGTRGIGMRPEESDSELLEDEEDEVPEPQIIIVGICAMTKKSKSKP
MTQILERLCRFDYLTVVILGEDVILNEPVENWPSCHCLISFHSKGFPLDKAVAYSKLRNPFLLINDLAMQY
YIQDRREVYRILQEEGIDLPRYAVLNRPDPARPEECNLEGEDQVEVNGAVFPKPFVEKPVSAEDHNVIYIY
YPSSAGGGSQRLFRKIGSRSSVYSPSSVRKTGSYIYEEFMPDTGTDVKVYTVGPDYAHAEARKSPALDG
KVERDSEGKEIRYPVMLTAMEKLVARKVCVAFKQTVCGFDLLRANGHSFVCDVNGFSFVKNSMKYYDDCA
KILGNTIMRELAPQFQIPWSIPTAEDIPVPTTSGTMMELRCVIAIRHGDRTPKQKMKMEVKHPRFFA
LFEKHGGYKTKGLKLRPEQLQEVLDIRLLLAELEKEPGGEIEEKTGKLEQLKSVLEMYGHFSGINRKV
QLTYYPHGKASNEGQDPQRET LAPSLLLVLKWWGELTPAGRVQAEELGRAFRMYPGGQGDYAGFPGCC
LLRLHSTFRHDLKIYASDEGRVQMTAAFAKGLLALLEGELTPILVQMVKSANMNGLLDSDGDSLSSCQHR
VKARLHHILQQDAPFGPEDYDQLAPTRSTLLNSMTIIQNPVKVCDQVFALINLTHQIRERMQDPRSVD
LQLYHSETLEMLQRWSKLERDFRQKSGRYDISKIPDIYDCVKYDVQHNGSLGLQGTAEALLRLSKALADV
VIPQEYGISREEKLEIAVGFCLPLLRKILLDLQRTHEDESVNKLHPLYSRGVLSPGRHVRTRLYFTSESH
VHSLLSVFRYGGLLDETQDAQWQRALDYLSAISELNYMTQIVIMLYEDNTQDPLSEERFHVLEHFSFGVK
GVEEEGSAPAGCGFRPASSENEEMKTNQGS MENLCPGKASDEPDRAQTSPQPPEGGLPRRSPLIRNRK
AGSMEVLSETSSSRPGGYRLFSSSRPPTMKSGLGSQCTGLFSTTVLGGSSAPNLQDYARSHGKLLPP
ASLKHRDGFEGCSMVPTIYPLETLHNALSLRQVSEFLSRVCQRHTDAQAQAASALFDSMHSSQASDNPF
PPRTLHSPPLQLQQRSEKPPWYSSGSSSTVSSAGPSSPTTVDGNSQFGFSDQPSLNSHVAEEHQGLLQ
ETPGSGAQELSIERGEQLFEPNQSPQVPPMETSQPYEVSQPCQEVDPDISQPCQDI SEALSQPCQKVPDI
SQQCQENHDNGNHTCQEVPHISQPCQKSSQLCQKVSEEVQCQCLENSEEVSQPCQGVSVVEVGLVHKFHV
GVGSLVQETLVEVGSAAEIPPEEVIQPYQEFVSEVGRLAQETSAINLLSQGIPEIDKPSQEFPEEIDLQA
QEVPEEIN
  
```

SGPTRTRPLEQKLI SEEDLAANDILDYKDDDDKV

**Restriction Sites:** SgfI-RsrII

**Cloning Scheme:**

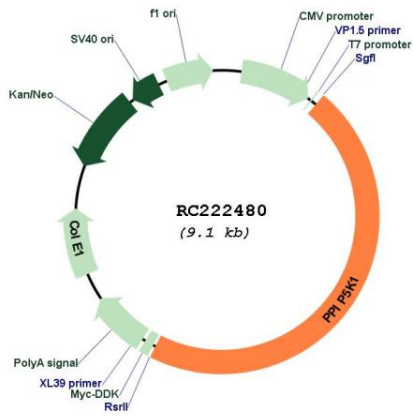


**ACCN:** NM\_014659

**ORF Size:** 4224 bp

<b>OTI Disclaimer:</b>	The molecular sequence of this clone aligns with the gene accession number as a point of reference only. However, individual transcript sequences of the same gene can differ through naturally occurring variations (e.g. polymorphisms), each with its own valid existence. This clone is substantially in agreement with the reference, but a complete review of all prevailing variants is recommended prior to use. <a href="#">More info</a>
<b>OTI Annotation:</b>	This clone was engineered to express the complete ORF with an expression tag. Expression varies depending on the nature of the gene.
<b>Components:</b>	The ORF clone is ion-exchange column purified and shipped in a 2D barcoded Matrix tube containing 10ug of transfection-ready, dried plasmid DNA (reconstitute with 100 ul of water).
<b>Reconstitution Method:</b>	<ol style="list-style-type: none"><li>1. Centrifuge at 5,000xg for 5min.</li><li>2. Carefully open the tube and add 100ul of sterile water to dissolve the DNA.</li><li>3. Close the tube and incubate for 10 minutes at room temperature.</li><li>4. Briefly vortex the tube and then do a quick spin (less than 5000xg) to concentrate the liquid at the bottom.</li><li>5. Store the suspended plasmid at -20°C. The DNA is stable for at least one year from date of shipping when stored at -20°C.</li></ol>
<b>RefSeq:</b>	<a href="#">NM_014659.5</a> , <a href="#">NP_055474.3</a>
<b>RefSeq Size:</b>	5564 bp
<b>RefSeq ORF:</b>	4227 bp
<b>Locus ID:</b>	9677
<b>UniProt ID:</b>	<a href="#">Q6PFW1</a>
<b>Cytogenetics:</b>	15q15.3
<b>Domains:</b>	acid_phosphat
<b>MW:</b>	156.6 kDa
<b>Gene Summary:</b>	This gene encodes a dual functional inositol kinase. The encoded enzyme converts inositol hexakisphosphate to diphosphoinositol pentakisphosphate and diphosphoinositol pentakisphosphate to bis-diphosphoinositol tetrakisphosphate. This protein may be important for intracellular signaling pathways. Alternate splicing results in multiple transcript variants. A pseudogene of this gene is found on chromosome 15.[provided by RefSeq, Jun 2010]

Product images:



Circular map for RC222480