

Product datasheet for RC222477

GTSF1L (NM_001008901) Human Tagged ORF Clone

Product data:

Product Type: Expression Plasmids
Product Name: GTSF1L (NM_001008901) Human Tagged ORF Clone
Tag: Myc-DDK
Symbol: GTSF1L
Synonyms: C20orf65; dj1028D15.4; FAM112A
Mammalian Cell Selection: Neomycin
Vector: pCMV6-Entry (PS100001)
E. coli Selection: Kanamycin (25 ug/mL)
ORF Nucleotide Sequence: >RC222477 representing NM_001008901
 Red=Cloning site Blue=ORF Green=Tags(s)

TTTTGTAATACGACTCACTATAGGGCGGCCGGAATTCGTCGACTGGATCCGGTACCGAGGAGATCTGCC
 GCC**CGATCGCC**

ATGGAGCCAGAAGCCTTTGAAATTTGCCCTTATGATCCTCACCACCGAATCCCACTCAGCAGATTCCAGT
 ACCACCTGGCATCGTGCAGGAGAAAGAACCCCAAGAAAGCCAAAAGATGGCCACCTGCAAATACAACGC
 CTGCCACGTGGTCCCATCAAAAATCTGGAGGAACATGAGGCTGTTTGTGTCAACAGGAGCGCTGTGGAA
 GAAGAGGACACCGAGAACCCTCTGAAAGTCAGTCCTCCTAGTTTCAGAGCAGAACGATGACACCCAGCAGA
 CTTTTTTCTCAAAGGTTGTTTGTGAAAATGACACGAAAGAGTCAGCAAGAGAGACCAGTCCCCAGAA
 GATCCTCAGACCAGGACAG

ACGCGTACGCGGCCGCTCGAGCAGAAACTCATCTCAGAAGAGGATCTGGCAGCAAATGATATCCTGGATT
 ACAAGGATGACGACGATAAGGTTTAA

Protein Sequence: >RC222477 representing NM_001008901
 Red=Cloning site Green=Tags(s)

MEPEAFEICPYDPHRIPLSRFQYHLASCRRKNPKKAKKMATCKYNACHVVPKLNLEEHAVCVNRSAVE
 EEDTENPLKVSPSPSEQNDDTQQTFPQKVVCEKENDTKESARETSPQKILRPGQ

TRTRPLEQKLISEEDLAANDILDYKDDDDKV

Chromatograms: https://cdn.origene.com/chromatograms/mk8040_h01.zip

Restriction Sites: SgfI-MluI



[View online »](#)

Cloning Scheme:


ACCN: NM_001008901

ORF Size: 369 bp

OTI Disclaimer: The molecular sequence of this clone aligns with the gene accession number as a point of reference only. However, individual transcript sequences of the same gene can differ through naturally occurring variations (e.g. polymorphisms), each with its own valid existence. This clone is substantially in agreement with the reference, but a complete review of all prevailing variants is recommended prior to use. [More info](#)

OTI Annotation: This clone was engineered to express the complete ORF with an expression tag. Expression varies depending on the nature of the gene.

Components: The ORF clone is ion-exchange column purified and shipped in a 2D barcoded Matrix tube containing 10ug of transfection-ready, dried plasmid DNA (reconstitute with 100 ul of water).

- Reconstitution Method:**
1. Centrifuge at 5,000xg for 5min.
 2. Carefully open the tube and add 100ul of sterile water to dissolve the DNA.
 3. Close the tube and incubate for 10 minutes at room temperature.
 4. Briefly vortex the tube and then do a quick spin (less than 5000xg) to concentrate the liquid at the bottom.
 5. Store the suspended plasmid at -20°C. The DNA is stable for at least one year from date of shipping when stored at -20°C.

RefSeq: [NM_001008901.2](#)

RefSeq Size: 773 bp

RefSeq ORF: 372 bp

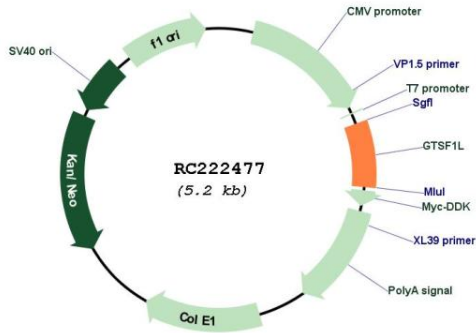
Locus ID: 149699

UniProt ID: [Q9H1H1](#)

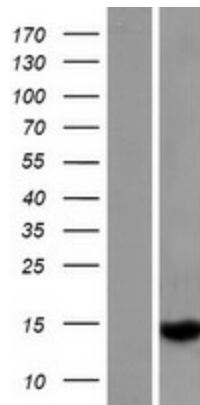
Cytogenetics: 20q13.12

MW: 14 kDa

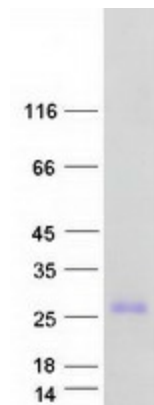
Product images:



Circular map for RC222477



Western blot validation of overexpression lysate (Cat# [LY422897]) using anti-DDK antibody (Cat# [TA50011-100]). Left: Cell lysates from untransfected HEK293T cells; Right: Cell lysates from HEK293T cells transfected with RC222477 using transfection reagent MegaTran 2.0 (Cat# [TT210002]).



Coomassie blue staining of purified GTSF1L protein (Cat# [TP322477]). The protein was produced from HEK293T cells transfected with GTSF1L cDNA clone (Cat# RC222477) using MegaTran 2.0 (Cat# [TT210002]).