

## Product datasheet for RC222469

### Talin 2 (TLN2) (NM\_015059) Human Tagged ORF Clone

#### Product data:

Product Type:	Expression Plasmids
Product Name:	Talin 2 (TLN2) (NM_015059) Human Tagged ORF Clone
Tag:	Myc-DDK
Symbol:	Talin 2
Synonyms:	ILWEQ
Mammalian Cell Selection:	Neomycin
Vector:	pCMV6-Entry (PS100001)
E. coli Selection:	Kanamycin (25 ug/mL)
ORF Nucleotide Sequence:	>RC222469 representing NM_015059 Red=Cloning site Blue=ORF Green=Tags(s)

TTTTGTAATACGACTCACTATAGGGCGGCCGGAATTCGTCGACTGGATCCGGTACCGAGGAGATCTGCC  
GCC**CGATCGCC**

ATGGTGGCCCTGTCTTAAAGATTTGTGTGCGCCACTGCAACGTGGTGAAGACCATGCAGTTGAACCAT  
CTACAGCTGTGTACGATGCGTGTGAGTCATTCCGGAACGGTGCCTGAGGCACAACTGGGCAAGCTTC  
TGACTATGGACTCTTTCTTCGGATGAAGACCCGAGGAAAGGGATTTGGCTGGAAGCGGGCAGAACACTG  
GATTACTACATGTTGCGGAATGGGGATATTTGGAATATAAAAAGAAACAGAGACCTCAGAAAATCCGGA  
TGCTGGATGGATCTGTGAAGACAGTGATGGTGGATGATCCAAGACTGTGGGGGAGCTCCTGGTCACTAT  
TTGTAGCAGAATAGGAATAACAAATTATGAAGAATACTCCTTAATCCAAGAACTATTGAAGAAAAGAAA  
GAGGAAGGAACGGGCACACTCAAAAAGACAGGACACTGTTACGAGATGAGAGGAAAATGGAGAAGTTGA  
AGGCCAAGCTGCACACAGATGATGACCTAAATTGGCTGGATCACAGCCGAACATTCAGAGAACAAGGAGT  
AGATGAAAACGAAACGTTGCTGCTTAGACGGAAGTTCTTTTACTCTGATCAGAATGTAGATTCGAGAGAC  
CCCGTGCAGCTGAACTTGCTTTATGTTCAAGGCACGGGATGACATCCTGAATGGCTCTCACCTGTCTCCT  
TCGAGAAAGCTTGTGAGTTTGGTGGATTCAAGCCCAGATACAATTTGGACCTCATGTGGAACATAAACA  
CAAACCTGGATTTTAGACCTGAAGGAATTCCTGCCCAAAGAATATCAAGCAGAGAGGAGCTGAAAAG  
AGGATCTTTCAGGCACATAAAGAACTGCGGAGAGATGAGTGAGATAAGCCAAGGTCAAGTACGTCAAAC  
TCGCACGGTCCCTCCGCACATATGGCGTGTCTTCTTCTGGTGAAGGAGAAGATGAAAAGGCAAGAACA  
GCTGGTGCCTCGCTGCTGGGGATCACCAAGACTCGGTGATGCGCGTGGATGAGAAGACCAAGGAAGTG  
CTGCAGGAGTGGCCCTCACACCGTCAAGCGCTGGGCAGCCTCACCAAGAGCTTCACACTGGATTTTG  
GGGAGTATCAGGAAAGCTACTATTCAGTACAAACCACCGAGGGAGAGCAGATATCCAGCTGATTGCAGG  
CTACATTGACATCATCCTGAAAAGAAACAAAGTAAAGATCGATTTGGACTAGAAGGTGATGAGGAGTCA  
ACCATGTTAGAAGAGTCCGTTTCCCAAAAAGTCCACCATCTTGCAGCAGCAGTTCACCCGGACCCGGGA  
AGGCAGAGCACGGCTCAGTGGCGCTGCCGGCGTGATGCGCTCGGGCTCCAGCGGGCCTGAGACCTCAA  
CGTTGGCAGCATGCCCTGCCACAGCAGCAGGTATGGTTGGGCAGATGCACCGAGGCCACATGCCGCCA



View online »

CTGACTTCAGCCCAGCAGGCCCTGATGGGGACCATCAACACAAGCATGCACGCCGTCCAGCAGGCCCCAGG  
 ATGATCTCAGTGAGCTCGACTCGCTGCCACCTCTCGGCCAGGATATGGCATCTAGGGTATGGGTTTCAGAA  
 CAAAGTCGACGAATCCAAACACGAAATCCATTCTCAAGTTGATGTATCACGGCCGGAACGGCTTCAGTT  
 GTTAACCTCACAGCTGGTGACCTGCAGACACTGACTACACAGCTGTGGGATGTGCGATCACCACATTTT  
 CTTCCAACCTGACGGAGATGTCCAAGGGTGTGAAGCTATTGGCCGCCCTCATGGATGATGAGGTGGGCAG  
 CGGGGAGGACTTGCTCAGAGCTGCCAGGACCCTCGTGGGGCGGTGTGAGACTTGCTGAAAGCTGTGCAG  
 CCTACTTCTGGAGAGCCTCGACAGACAGTTTTACTGCTGCTGGCAGCATCGGACAAGCCAGTGGGGATC  
 TTCTGAGACAGATTGGAGAGAATGAGACTGATGAGCGATTCCAGGATGTTTTAATGAGTTTGGCCAAAGC  
 TGGTGCCAAATGCAGCTGCCATGTTGGTACTAAAGGCAAAGAATGTTGCCCAAGTGCCGAAGACACTGTC  
 CTACAGAACAGGGTAATTGCTGCTGCCACCCAGTGTGCCCTCTCCACCTCCCAGCTTGTGGCATGTGCCA  
 AGGTTGTGAGCCCCTATTAGCTCCCCTGTGTGCCAGGAGCAGCTGATTGAAGCAGGGAAGCTGGTGGA  
 CCGCTCGTGGAGAACTGTGTCGTGCCAGGCGGCCACTACCGATAGTGAGCTCCTGAAGCAGGTC  
 AGCGCAGCGGCCAGCGTGGTCAGCCAGGCCCTCCATGATCTCTGCAGCATGTGCGGCAGTTTCCAGCC  
 GAGGCGAGCCCATCGGCCCTACGACCAGGCTACTGACACCATCATGTGTGTACCAGAGAGCATCTTCAG  
 CTCATGGGTGACGCTGGTGAATGGTGGCCAGGCGCGGTTCTGGCCCAAGCCACATCAGACCTCGTC  
 AATGCCATGAGGTGAGATGCAGAAGCCGAAATCGACATGGAGAATTCAAAGAAGCTCCTGGCAGCAGCAA  
 AACTCTTAGCTGACTCCACTGCTCGCATGGTGGAAAGCTGCAAAGGGGGCTGCAGCCAACCCAGAGAATGA  
 GGACCAGCAGCAAAGGCTGAGAGAAGCTGCAGAAGGCCTCCGGGTAGCAACCAACGCAGCTGCCAGAAT  
 GCTATTAAGAAAAAATTTGCAACCGACTGGAGGTTGCAGCCAAGCAGGCCGAGCGGCAGCTACACAGA  
 CCATCGCCGCCTCCAGAATGCAGCTGTTTCCAACAAGAACCCTGCGGCCAGCAGCAGCTGGTCCAGAG  
 TTGCAAGGCAGTGGTGATCACATCCCTCAGCTGGTCCAGGGAGTGAGGGGGAGCCAAGCTCAAGCTGAA  
 GACCTGAGTGGCAGCTGGCTCATCATCTCCAGCCAGAACTTCTCCAGCCTGGAAGCAAGATGGTGT  
 CCTCTGCCAAAGCCGAGTGCCACCCTGAGTGACCAGGCCGAGCCATGCAGCTGAGCAGTGTGCCAA  
 GAACTGGCCACCAGCTTGGCGGAGCTGGGTACCGCCTCGCAGAAGGCCCATGAAGCTTGTGGTCCGATG  
 GAAATCGATTGAGCTCTGAATACGGTGCAGACGCTTAAGAATGAACTGCAGGATGCCAAGATGGCAGCCG  
 TGGAGAGCCAGCTGAAGCCACTTCCAGGGGAAACGCTGGAAAAATGTGCTCAGGACCTGGGAAGCACATC  
 CAAGGCGGTGGGCTCCTCCATGGCAGAGCTGCTGACCTGTGCTCAAGGCAACGAACACTACACAGGG  
 GTGGCTGTAGAGAGACGGCCCAAGCTCTGAAAACACTGGCCAGGCCGCCCCGTGGAGTGGCTGCATCGA  
 CAACCGACCCCGCGGCCGCCATGCCATGTTAGATTCTGCTCGAGACGTGATGGAGGGCTCCGCCATGCT  
 CATTCAAGAGGCCAAGCAGGCCCTGATTGCACCTGGAGATGCAGAGCGTCAACAAAGACTGGCTCAGGTG  
 GCTAAAGCGTCTCACACTCCTTGAATAACTGCGTAAATTCCTCCCTGGGCAGAAGGATGTGGACGTGG  
 CCTTGAAGAGCATCGGGGAGTCCAGCAAGAAGCTGCTTGTGGATTGCTACCTCCAAGCAGCAAGCCTTT  
 CCAGGAAGCCCAGAGTGAACGAACCAGGCAGCAGCTGATCTGAACCAAGTCTGCTGGGGAAGTGGTCCAT  
 GCCACCCGGGGCCAGAGTGGAGAGTTGGCTGCAGCCTCTGGAAAGTTCAAGTATGATTTTGTGATTAATCC  
 TCGATGCTGGCATTGAGATGGCTGGCCAAGCTCAGACAAAAGAAGACCAGATCCAAGTATAGGGAACCT  
 CAAGAATATCTCGATGGCATCCAGCAAGCTGCTGTTAGCTGCCAAGTCTCTCTGTAGATCCAGGAGCT  
 CCCAATGCGAAAAATCTCCTGGCTGCAGCTGCAAGAGCTGTGACAGAGAGCATCAATCAACTCATCACTC  
 TGTGTACCAACAAGCTCCGGGCCAGAAAGAGTGCATAATGCCCTGCGGGAGCTCGAGACTGTGAAGGG  
 GATGTTGGACAATCCTAATGAACCTGTTAGTGACCTCTTACTTTGACTGCATTGAGAGTGTGATGGAA  
 AACTCCAAGTTCTGGGTGAATCGATGGCAGGGATTTACAGAATGCCAAGACCGGAGACCTCCCTGCCT  
 TTGGGGAATGTGTGGGATTGCATCCAAGGCTCTCTGTGGGCTGACAGAGGCTGCAGCCCAGGCTGCATA  
 CTTGGTTGGCATCTGTATCCAACAGCCAGGCAGGCCACCAGGGCCTGGTGGACCCATCCAGTTTGGC  
 AGGGCTAACAGGCCATCCAGATGGCATGCCAGAACTTGGTGGACCCTGGCAGCAGCCATCACAGGTCC  
 TGTGAGCCGCCACAATTGTTGCCAAGCACAGTCAAGCCTTGTGTAATGCCTGCCGCATCGCTCATCCAA  
 GACGGCCAACCCAGTAGCCAAGAGGCACCTTCGTCCAGTCAAGGAAGTCCCAACAGCACTGCCAAC  
 CTGGTGAAGACCATCAAGGCCCTGGATGGGGATTTCTCTGAAGACAACCGCAATAAGTGTGCGATCGCCA  
 CCGCACCTTGATTGAAGCTGTGGAGAACCTGACAGCGTTGCGCTCAAACCTGAGTTTGTGAGCATTCC  
 TGCCAGATCAGCTCCGAGGGTTCCAGGCACAGGAACCAATCCTGGTCTCAGCCAAGACCATGCTGGAG  
 AGTTCATCGTACCTCATTGCACTGCACGCTCTCTGGCCATCAACCCCAAGACCCACCCACCTGGTCTG  
 TACTGGCTGGACATTCCCATACAGTGTCCGACTCCATCAAGAGTCTCATCACTTCTATCAGGGACAAGGC  
 CCCTGGACAGAGGGAGTGTGATTACTCCATCGATGGCATCAACCGGTGATCCGGGACATCGAGCAGGCC  
 TCGCTGGCCGCCGTGAGCCAGAGCCTGGCCACGAGGGACGACATCTGTGGAGGCCCTGCAGGAGCAGC

TGACTTCGGTGGTCCAGGAAATCGGACACCTTATCGATCCCATCGCCACAGCGGCTCGGGGAGAAGCAGC  
 TCAGCTGGGACATAAGGTGACACAACTGGCAAGCTATTTTGAGCCCTTGATCTTAGCCGACAGTTGGTGTG  
 GCCTCAAAGATTCTTGATCATCAGCAGCAGATGACGGTGTGGACCAGACCAAGACTCTCGCAGAGTCTG  
 CCTTGACAGATGTTGTATGCAGCCAAAGAAGGTGGCGGAAACCCCAAGGCACAACACCCCATGACGCCAT  
 CACAGAGGCCGCCAGTTGATGAAGGAAGCCGTGGATGACATCATGGTGACGCTGAACGAAGCTGCCAGT  
 GAAGTGGGGCTGGTTGGGGCATGGTGGACGCCATTGCAGAAGCCATGAGCAAGCTGGATGAAGGCACTC  
 CTCCAGAACCAAGGGAACATTTGTCGACTATCAGACGACTGTGGTTAAATACTCCAAGCCATTGCGGT  
 GACAGCTCAGGAAATGATGACTAAGTCGGTACTAACCCGGAGGAGTTGGGAGGACTGGCTTCACAAATG  
 ACCAGTGACTATGGGCACCTGGCTTTCCAGGGCCAGATGGCAGCAGCCACGGCGGAACCAGAGGAGATCG  
 GATTCCAGATTTCGACTCGTGTGCAGGACCTGGGCCACGGCTGTATCTTCTGGTGCAGAAGGCAGGGGC  
 CCTCCAGGTCTGCCCCACAGACAGCTACACCAAGAGGGAGCTGATCGAATGCGCCCGTGCCTGCAGGAA  
 AAGGTCTCCTGGTGTCTCGGCTCTCCAGGCCGGGAACAAGGAACCCAGGCATGCATTACAGCCGCCA  
 CCGCTGTGTCTGGGATCATTGCCGACCTGGACACCACCATTATGTTTGCAACAGCGGGGACGCTGAATGC  
 AGAGAACAGTGAGACCTTCGACAGCCACAGGGAGAACATTCTCAAGACGGCCAAGGCCTTGGTAGAAGAC  
 ACGAAACTACTTGTGTCAGGAGCTGCGTCCACTCTGACAAGCTGGCCCAGGCGGCCAGTCTCAGCAG  
 CCACCATCACCCAGCTCGCAGAAGTGGTCAAGCTGGGGGAGCCAGCCTGGGCTCCGACGACCCCGAGAC  
 CCAGGTGGTTTTGATCAATGCCATCAAAGATGTGGCCAAGGCCCTTTCTGATCTCATCAGTGCTACCAAG  
 GGAGCTGCCAGCAAGCCAGTGGACGACCCTTCCATGTACCAGCTCAAGGGGGCTGCCAAGGTGATGGTGA  
 CCAATGTCACCTCGCTCCTCAAGACTGTAAAGGCAGTGGAGGATGAGGCCACCCGGGGCACCAGGGCGCT  
 TGAGGCCACAATTGAATGCATAAAGCAGGAGCTTACGGTGTTCAGTCAAAGACGTACCTGAAAAGACA  
 TCATCACCTGAAGAATCCATAAGGATGACGAAAGGCATCACCATGGCAACAGCCAAGGCCGTGGCAGCTG  
 GAACTCATGTAGACAGGAGGACGTGATTGCTACTGCCAACCTGAGCCGAAAGCCGTGTGAGATATGTT  
 GACGGCTTGAAGCAAGCATCCTTCCACCCGATGTCAGTGACGAGGTGAGAACCAGAGCCTTGGCTTTC  
 GGGACGGAGTGACCCCTTGGCTACTTGGACCTCCTGGAGCACGTCTTGGTGATTCTTCAGAAACCAACCC  
 CAGAATTCAGCAGCAGCTGGCCGCTTTCTCCAAGCGAGTCGCCGGCGCTGTGACAGAGCTCATCCAGGC  
 GCGGGAAGCCATGAAAGGAACAGAGTGGGTGGATCCAGAAGACCAACTGTATTGCAGAAAACAGAGTTA  
 CTGGGGGCTGCAGCATCCATCGAAGCTGCTGCTAAGAAGTTAGAGCAACTGAAGCCAAGAGCAAAACCAA  
 AACAGCGGATGAGACCCTGGACTTTGAGGAACAGATCTTGAAGCTGCTAAATCCATTGCTGCTGCCAC  
 AAGCGCCTGGTCAAATCGGCCTCAGCAGCCAGAGGGAGCTGGTGGCCAAGGAAAGGTGGGCTCCATC  
 CCTGCCAATGCTGCAGACGACGGACAGTGGTACAGGGGCTGATTTCTGCTGCCCGGATGGTGGCGGCTG  
 CGACCAGCAGTCTCTGTGAGGCGGCAATGCCCTCCGTTTCAAGGACAGCCAGCAGGAGAAGCTCATCTC  
 ATCTGCCAAGCAGGTCCGCGCTTCCACGGCTCAGCTGCTGGTGGCTGCAAGGTGAAGGCCGACCAGGAT  
 TCAGAGGCCATGAGGCGGCTACAGGCGGCAGGAAATGCTGTGAAAAGAGCCTCAGACAATCTTGTCCGTG  
 CAGCCCAGAAGGCAGCTTTTGGCAAAGCTGATGACGACGATGTTGTAGTAAAACCAAGTTTGTGGGGGG  
 CATTGCTCAGATCATCGCCGCCAGGAAGAAATGCTAAAGAAAGAGCGAGAAGTGGAAAGAAGCAAGGAAA  
 AAAGTGGCCAAATCCGCCAGCAGCAGTATAAGTTTTTACCCACCGAGCTGAGGGAAGATGAGGGC

ACGCGTACGCGGGCGCTCGAGCAGAACTCATCTCAGAAGAGGATCTGGCAGCAATGATATCCTGGATT  
 ACAAGGATGACGACGATAAGGTTTAA

**Protein Sequence:** >RC222469 representing NM\_015059  
 Red=Cloning site Green=Tags(s)

MVALSLKICVRHCNVVKTMQFEPSTAVYDACRVIRERVPEAQTGGASDYGLFLSDEDPKGIWLEAGRTL  
 DYYMLRNGDILEYKKKQRPQKIRMLDGSVKTVMVDDSKTVGELLVTICSRIGITNYEEYSLIQETIEEKK  
 EEGTGTLLKDRLLRDERKMEKLLKAKLHTDDDLNWL DHSRTFREQGV DENETLLLRKFFYSDQNVD SRD  
 PVQLNLLYVQARDDILNGSHPVSFEKACEFGGFQAQIQFGPHVEHKHKPGFLDLKEFLPKEYIKQRGAEK  
 RIFQAHKNCGEMSEIEAKVKYVKLARSLRITYGVSFLLVKEKMKGKNKLVPRLLGITKDSVMRVDEKTKEV  
 LQEWPLTTVKRWAASPKSFTLDFGEYQESYYSVQTTEGEQISQLIAGYIDIIILKQKSKDRFGLEGEES  
 TMLEESVSPKKSTILQQQFNRTGKAHEGVSVALPVMRSGSSGPETFNVGSMPSQQQVMVGMHRGHMPP  
 L TSAQQALMGTINTSMHAVQQAQDDLSELDLPLPQGDMSRVVWQNKVDESKHEIHSQVDAITAGTASV  
 VNLTAGDPADTDYAVGCAITTISSNLTEMSKGVKLLAALMDDEVGSGEDLLRAARTLAGAVSDLLKAVQ  
 PTSGEPRQTVLTAAGSIGQASGDLRLQIGENETDERFQDVLMSLAKAVANAAAMLVLKAKNVAQVAEDTV  
 LQNRVIAAATQCALSTSQLVACAKVVSPTISSPVCQEQLIEAGKLVDRSVENCVRACQAATTDSELLKQV  
 SAAASVVSQALHDLLQHVRQFASRGEPIGRYDQATDTIMCVTESIFSSMGDAGEMVRQARVLAQATSDLV  
 NAMRSDAEAEIDMENSKLLAAAKLLADSTARMVEAAKGAAANPENEDQQQRLREAAEGLRVATNAAQN  
 ATKKKIVNRLEVAAKQAAAAATQTIAASQNAAVSNKNPAAQQQLVQSCKAVADHIPQLVQVGRGSAQAE  
 DLSAQLALIISSQNFLQPGSKMVSSAKAAVPTVSDQAAAMQLSQCANKLATSLAELRTASQKAHEACGPM  
 EIDSALNTVQTLKNEQLDAKMAAVESQLKPLPGETLEKCAQDLGSTSKAVGSSMAQLL TCAAQNEHYTG  
 VAARETAQALKTLAQAARGVAAS TTPAAAHAMLSDARDVMEGSAMLIQEAKQAL IAPGDAERQQLA QV  
 AKAVSHSLNNCVNCLPGQKDVVALKSI GESSKLLVDSLPPSTKPFQEAQSELNQAADLNQSAGEVVH  
 ATRGQSGELAAASGKFSDDFDEF LDAGIEMAGQAQTKEDQIQVIGNLKNISMASSKLLLA AKSLSDPGA  
 PNAKNLLAAAARAVTESINQLITLCTQQAPGQKECDNALRELETVKGM LDNPNEPVS DLSYFD CIESVME  
 NSKVLGESMAGISQNAKTGDLPAFGECVGIASKALCGLTEAAAQAAYLVGISDPNSQAGHQGLVDP IQFA  
 RANQAIQMACNQLVDPGSSPSQVLSAATIVAKHTSALCNACRIASSKTANPVAKRHFVQSAKEVANSTAN  
 LVKTIKALDGDFSEDNRNKCRIATAPLIEAVENL TAFASNPEFVSIPAQISSEGSQAQEPILVSAKTMLE  
 SSSYLIRTARSLA INPKDPPTWSVLAGHSHTVSDSIKSLITSIRDKAPGQRECDYSIDGINRCIRDIEQA  
 SLAAVSQSLATRDDISVEALQEQLTSVQEQI GHLIDPIATAARGEAAQLGHKVTQLAS YFEPLILAAVGV  
 ASKILDHQQMTVLDQTKTLAESALQMLYAAKEGGGNPKAQHTHDAITEAAQLMKEAVDDIMVTLNEAAS  
 EVGLVGGMVDAIAEAMSKLDEGTPPEPKGTFVDYQTTVVKYSKAIAVTAQEMMKSVTNPEELGGLASQM  
 TSDYGH LAFQGMMAATAEP EEEIGFQIRTRVQDLGHG CIFLVQKAGALQVCPTDSYTKRELIECARAVTE  
 KVSLVLSALQAGNKGTQACITAA TAVSGIIADLDTTIMFATAGTLNAENSETFADHRENILKTAKALVED  
 TKLLVSGAAS TPDKLAQAAQSSAATITQLAEVVKLGAASLGSDDPETQVV LINA IKDVAKALSDLISATK  
 GAASKPVDDPSMYQLKGAAKVMVTNVT SLLKTVKAVEDEATRGRAL EATIECIKQELTVFQSKDVPEKT  
 SSPEESIRMTKGITMATAKAVAAGNSCRQEDVIATANLSRKAVSDMLTACKQASFPDVSDVTRALRF  
 GTECTLGYLDLLEHVLVILQKPTPEFKQQLAAFSKRVAGAVTEL IQAAEAMKGTEWVDPEDPTVIAETEL  
 LGAAASIEAAAKKLEQLKPRAPKQADETLD FEEQILEAAKSIAAATSALVKSASAAQRELVAQGVGSI  
 PANAADDGQWSQGLISAARMVAAATSSLCEANASVQGHASEEKLISSAKQVAASTAQLLVACKVKADQD  
 SEAMRRLQAAGNAVKRASDNLVRAAQKAAF GKADDDVVVKTKFVGGIAQIIAAQEEMLKKERELEEARK  
 KLAQIRQQQYKFLPTELREDEG

TRTRPLEQKLI SEEDLAANDILDYKDDDDKV

**Chromatograms:** [https://cdn.origene.com/chromatograms/mk8040\\_g10.zip](https://cdn.origene.com/chromatograms/mk8040_g10.zip)

**Restriction Sites:** Sgfl-Mlul

**Cloning Scheme:**


**ACCN:** NM\_015059

**ORF Size:** 7626 bp

**OTI Disclaimer:** The molecular sequence of this clone aligns with the gene accession number as a point of reference only. However, individual transcript sequences of the same gene can differ through naturally occurring variations (e.g. polymorphisms), each with its own valid existence. This clone is substantially in agreement with the reference, but a complete review of all prevailing variants is recommended prior to use. [More info](#)

**OTI Annotation:** This clone was engineered to express the complete ORF with an expression tag. Expression varies depending on the nature of the gene.

**Components:** The ORF clone is ion-exchange column purified and shipped in a 2D barcoded Matrix tube containing 10ug of transfection-ready, dried plasmid DNA (reconstitute with 100 ul of water).

- Reconstitution Method:**
1. Centrifuge at 5,000xg for 5min.
  2. Carefully open the tube and add 100ul of sterile water to dissolve the DNA.
  3. Close the tube and incubate for 10 minutes at room temperature.
  4. Briefly vortex the tube and then do a quick spin (less than 5000xg) to concentrate the liquid at the bottom.
  5. Store the suspended plasmid at -20°C. The DNA is stable for at least one year from date of shipping when stored at -20°C.

**RefSeq:** [NM\\_015059.1](#), [NP\\_055874.1](#)

**RefSeq Size:** 8500 bp

**RefSeq ORF:** 7629 bp

**Locus ID:** 83660

**UniProt ID:** [Q9Y4G6](#)

**Cytogenetics:** 15q22.2

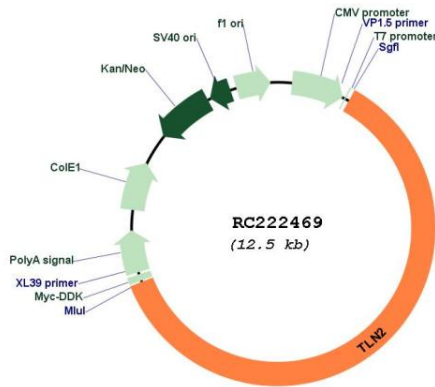
**Protein Families:** Druggable Genome

**Protein Pathways:** Focal adhesion

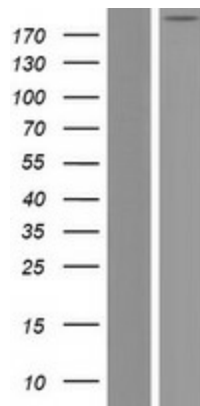
**MW:** 271.4 kDa

**Gene Summary:** This gene encodes a protein related to talin 1, a cytoskeletal protein that plays a significant role in the assembly of actin filaments and in spreading and migration of various cell types, including fibroblasts and osteoclasts. This protein has a different pattern of expression compared to talin 1 but, like talin 1, is thought to associate with unique transmembrane receptors to form novel linkages between extracellular matrices and the actin cytoskeleton. [provided by RefSeq, Jul 2008]

**Product images:**



Circular map for RC222469



Western blot validation of overexpression lysate (Cat# [LY414827]) using anti-DDK antibody (Cat# [TA50011-100]). Left: Cell lysates from untransfected HEK293T cells; Right: Cell lysates from HEK293T cells transfected with RC222469 using transfection reagent MegaTran 2.0 (Cat# [TT210002]).