

## Product datasheet for **RC222467**

### OR10V1 (NM\_001005324) Human Tagged ORF Clone

#### Product data:

Product Type:	Expression Plasmids
Product Name:	OR10V1 (NM_001005324) Human Tagged ORF Clone
Tag:	Myc-DDK
Symbol:	OR10V1
Synonyms:	OR11-256
Mammalian Cell Selection:	Neomycin
Vector:	pCMV6-Entry (PS100001)
E. coli Selection:	Kanamycin (25 ug/mL)
ORF Nucleotide Sequence:	>RC222467 representing NM_001005324 Red=Cloning site Blue=ORF Green=Tags(s)

TTTTGTAATACGACTCACTATAGGGCGGCCGGAATTCGTCGACTGGATCCGGTACCGAGGAGATCTGCC  
GCC**CGATCGCC**

ATGGAAGGAATAAATAAACTGCAAAGATGCAGTTTTTCTTCGTCATTCTCACCTGACCTGAGGTCC  
AGATGCTGATTTTTGTGGTCTTCCTGATGATGATCTGACCAGCCTCGGTGAAATGCTACAATTGCAGT  
CATTGTCAGATCAATCATTCCCTCCACACCCCATGACTTTTTCTGGCTAATCTGGCAGTTCTAGAA  
ATCTTCTATACATCTTCCATCACCCATTGGCCTTGGCAAACCTCTTCAATGGGCAAACTCCTGTTT  
CCATCACGGGATGTGGCACCCAGATGTTTTCTTTGTCTTCTGGGTGGGCTGATTGTGTCCTGCTGGT  
AGTCATGGCTTATGACCAGTTTATAGCGATCTGTACCCTCTGCGATACAGGCTCATCATGAGCTGGTCC  
TTGTGTGTGGAGCTGCTGGTAGGCTCCTTGGTGTGGGTTCTGTGTCACTGCCACTCACCATTTTAA  
TCTTCCATCTCCATTCTGCCACAATGATGAGATCTACCACTTCTACTGTGACATGCCTGCAGTCATGCG  
CCTGGCTGTGCAGACACACGCGTTCACAAGACTGCTCTGTATATCATCAGCTTCATCGTCTTAGCATC  
CCCCTCTCATTGATCTCCATCTCCTATGTCTTCATCGTGGTAGCCATTTACGGATCCGGTCAGCAGAAG  
GGCGCCAGCAAGCCTACTCTACCTGCTCTTCTCACATCTAGTGGTCTCCTGCAGTATGGCTGCACCAG  
CTTTATACTTTGCCCCAGTTCAGCTACTCTCCTGAGATGGCGGGTGGTATCTGTGGCCTACACA  
TTTATCACTCCCATTTAAACCCCTTGATCTATAGTTTGAGGAACAAGGAACTGAAAGATGCCCTAAGGA  
AAGCATTGAGAAAATTC

AG**CGGACCG**ACGCGTACGCGGCCGCTCGAGCAGAACTCATCTCAGAAGAGGATCTGGCAGCAAATGATATCC  
TGGATTACAAGGATGACGACGATAAGGTTTAA



[View online »](#)

**Protein Sequence:** >RC222467 representing NM\_001005324  
 Red=Cloning site Green=Tags(s)

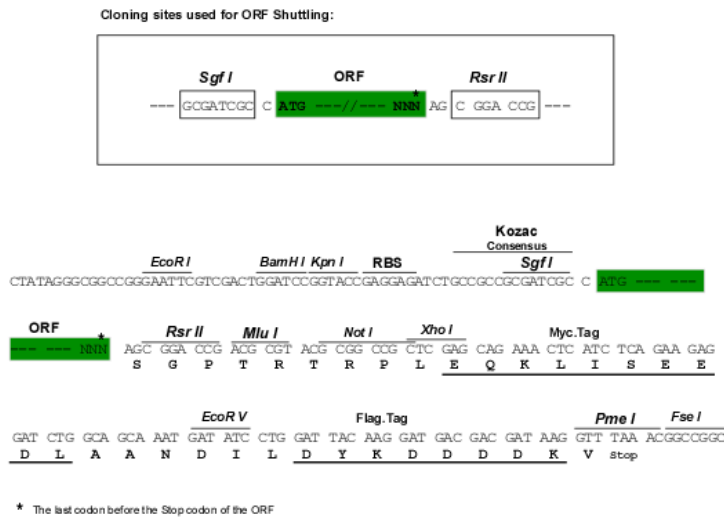
MEGINKTAKMQFFFRPFSPDPEVQMLIFVVFLMMYLTSLGGNATIAVIVQINHSLHTPMYFFLANLAVLE  
 IFYTSSITPLALANLLSMGKTPVSITGCGTQMFFVFLGGADCVLLVVMAYDQFIAICHPLRYRLIMSWS  
 LCVELLVGLVLGFLLSLPLTILIFHLPFCHNDEIYHFYCDMPAVMRLACADTRVHKALYIISFIVLSI  
 PLSLISISYVFI VVAILRIRSAEGRQQAYSTCSSHILVLLQYGCTSFYILSPSSSYSPENGRVVSAYT  
 FITPILNPLIYSLRNKELKDALRKALRKF

SGP TRRRLEQKLI SEEDLAANDILDYKDDDDKV

**Chromatograms:** [https://cdn.origene.com/chromatograms/mk8003\\_g07.zip](https://cdn.origene.com/chromatograms/mk8003_g07.zip)

**Restriction Sites:** SgfI-RsrII

**Cloning Scheme:**



**ACCN:** NM\_001005324

**ORF Size:** 927 bp

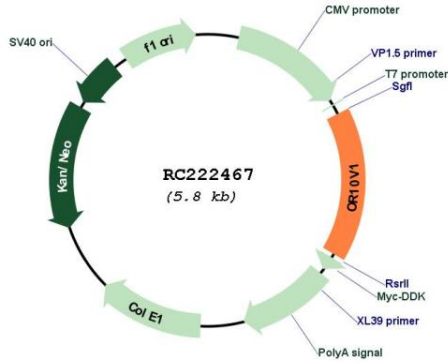
**OTI Disclaimer:** The molecular sequence of this clone aligns with the gene accession number as a point of reference only. However, individual transcript sequences of the same gene can differ through naturally occurring variations (e.g. polymorphisms), each with its own valid existence. This clone is substantially in agreement with the reference, but a complete review of all prevailing variants is recommended prior to use. [More info](#)

**OTI Annotation:** This clone was engineered to express the complete ORF with an expression tag. Expression varies depending on the nature of the gene.

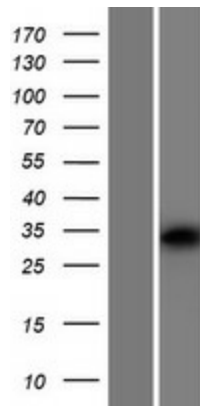
**Components:** The ORF clone is ion-exchange column purified and shipped in a 2D barcoded Matrix tube containing 10ug of transfection-ready, dried plasmid DNA (reconstitute with 100 ul of water).

<b>Reconstitution Method:</b>	<ol style="list-style-type: none"><li>1. Centrifuge at 5,000xg for 5min.</li><li>2. Carefully open the tube and add 100ul of sterile water to dissolve the DNA.</li><li>3. Close the tube and incubate for 10 minutes at room temperature.</li><li>4. Briefly vortex the tube and then do a quick spin (less than 5000xg) to concentrate the liquid at the bottom.</li><li>5. Store the suspended plasmid at -20°C. The DNA is stable for at least one year from date of shipping when stored at -20°C.</li></ol>
<b>RefSeq:</b>	<u><a href="#">NM_001005324.1</a></u> , <u><a href="#">NP_001005324.1</a></u>
<b>RefSeq Size:</b>	930 bp
<b>RefSeq ORF:</b>	930 bp
<b>Locus ID:</b>	390201
<b>UniProt ID:</b>	<u><a href="#">Q8NGI7</a></u>
<b>Cytogenetics:</b>	11q12.1
<b>Protein Families:</b>	Transmembrane
<b>Protein Pathways:</b>	Olfactory transduction
<b>MW:</b>	34.6 kDa
<b>Gene Summary:</b>	Olfactory receptors interact with odorant molecules in the nose, to initiate a neuronal response that triggers the perception of a smell. The olfactory receptor proteins are members of a large family of G-protein-coupled receptors (GPCR) arising from single coding-exon genes. Olfactory receptors share a 7-transmembrane domain structure with many neurotransmitter and hormone receptors and are responsible for the recognition and G protein-mediated transduction of odorant signals. The olfactory receptor gene family is the largest in the genome. The nomenclature assigned to the olfactory receptor genes and proteins for this organism is independent of other organisms. [provided by RefSeq, Jul 2008]

Product images:



Circular map for RC222467



Western blot validation of overexpression lysate (Cat# [LY423852]) using anti-DDK antibody (Cat# [TA50011-100]). Left: Cell lysates from untransfected HEK293T cells; Right: Cell lysates from HEK293T cells transfected with RC222467 using transfection reagent MegaTran 2.0 (Cat# [TT210002]).