

## Product datasheet for **RC222454**

### **RABEP2 (NM\_024816) Human Tagged ORF Clone**

#### **Product data:**

Product Type:	Expression Plasmids
Product Name:	RABEP2 (NM_024816) Human Tagged ORF Clone
Tag:	Myc-DDK
Symbol:	RABEP2
Synonyms:	FRA
Mammalian Cell Selection:	Neomycin
Vector:	pCMV6-Entry (PS100001)
E. coli Selection:	Kanamycin (25 ug/mL)



[View online »](#)

**ORF Nucleotide Sequence:**

>RC222454 representing NM\_024816  
 Red=Cloning site Blue=ORF Green=Tags(s)

TTTTGTAATACGACTCACTATAGGGCGGCCGGAATTCGTCGACTGGATCCGGTACCGAGGAGATCTGCC  
 GCC**CGCATCGCC**

ATGGCGCAGCTGCGCCGGTGGCCGCGGACGACGATGAGCGGCGCGCGGCCGGGGCTGCACTGGAGG  
 ACTCCCGGTCCCAGGAAGGGGCAAATGGTGAGGCCGAGTCAGGTGAGCTCAGCCGGCTTCGGGCTGAGCT  
 GGCAGGCGCCCTGGCAGAAATGGAACCATGAAGGCTGTGGCAGAGGTGAGCGAGAGCACGAAGGCCGAG  
 GCTGTGGCTGCGGTGCAGCGCAGTGCCAAAGAGGAGGTGGCTCGCTGCAGGCCATCCTGAAAGACTCCA  
 TCAGCAGCTATGAAGCCAGATCACCGCCTGAAGCAGGAGCGACAGCAGCAGCAGCAGGACTGTGAGGA  
 GAAGGAGCGGGAGCTGGGCCGCTGAAGCAGCTGCTGTCCGGGCTACCCCTGGACTCCCTGGAGAAG  
 CAGATGGAAAAGGCCACGAGGACTCGGAGAAGCTGCGGGAGATCGTACTGCCCATGGAAAAGGAGATCG  
 AGGAGCTGAAGGCGAAGCTGCTGAGGGCCGAGGAGCTGATTCAGGAGATCCAGAGACGTCCCGGCATGC  
 CCCTTCCCTGCACGGCTCCACGGAGTTGCTGCCCTGTCCGGGATCCATCGCCCCGCTGGAGCCTCTG  
 GAGGAGCTGAGCGGAGATGGGGTCCAGCCGCTGAGGCCTTCGCTCACAACCTGCGATGACAGCGCCTCCA  
 TCTCTCCTTCTCCCTTGGCGGTGGGTGCGCAGCAGCTCCTCCCTGCCCAAAGCCGCCAGGGCCTGAG  
 CCCTGAACAGGAAGAGACGGCCTCGCTGGTGTCTACGGGCACCCTGGTCCCGAGGGCATCTACCTGCC  
 CCTCTGGCTACCAGCTCGTCCCAGACACTCAGTGGGAGCAGCTGCAGACAGAGGGCCGACAGCTGCAGA  
 AGGACCTGGAGAGCGTCACTCGCAGCGGGACGAGCTCCAAGAGGGCCTGAGACGGAGCAATGAGGACTG  
 TGCCAAGCAGATGCAAGTGTCTTGGCCAGGTCCAGAACTCAGAGCAGCTGTGCGGACCCTGCAAGGG  
 ACCGTGAGCCAGGCCAGGAGCGGGTGCAGCTGCAGATGGCGGAGCTGGTCAACCCACAAGTGCCTGC  
 ACCATGAGGTAAGCGGTTGAATGAGGAAAACCAAGGGCTCCGGGCCGAGCAGCTGCCATCCTCAGCCCC  
 CCAGGGCTCGCAGCAGGAGCAGGGCGAGGAGAACTCACTGCCAGCTCTGTGCCAGAGCTGCAGCAGCTG  
 CTGTGCTGCACGCGCAAGAGGCGAGGGCCGGCTGCAGGCCAGGAGCACGGGGCCGAGCGCTGCGGA  
 TCGAGATCGTGACGCTGCGGGAGGCTCTGGAGGAGGAGACAGTGGCCAGGGCCAGCCTGGAGGGCAGCT  
 GAGGGTGCAGCGGGAGGAGACAGAGGTGCTGGAGGCTCCTGTGCAGCCTGAGGACAGAGATGGAGCGG  
 GTGCAGCAGGAACAGAGCAAGGCCAGCTCCCAGACCTCCTCAGAACAGAGGGCAAGGTGCTGCGGC  
 TGCAGGCAGAGCTGGAGACCAGTGCAGGTGCAGAGGGATTCGTGCGACTGTCCAGGCCCTGCAGGT  
 GCGCCTAGAGCGGATCCGCCAGGCTGAGACCCTGGAGCAAGTGGCAGCATCATGGATGAGGCGCCACTC  
 ACGGACGTCAGGGACATCAAGGACACC

**ACGCGT**ACGCGGCCGCTCGAGCAGAACTCATCTCAGAAGAGGATCTGGCAGCAAATGATATCCTGGATT  
 ACAAGGATGACGACGATAAGGTTTAA

**Protein Sequence:**

>RC222454 representing NM\_024816  
 Red=Cloning site Green=Tags(s)

MAAAPVAADDDERRRRPAALEDSRSQEGANGEAESGELSRRLRAELAGALAEMETMKAVAEVSESTKAE  
 AVAAVQRQCQEEVASLQAILKDSISSYEAQITALKQERQQQQDCEEKERELGRLKQLLSRAYPLDSLEK  
 QMEKAHEDSEKLREIVLPMEKEIEELKAKLLRAEELIQEIQRPRRHAPSLHGSTELLPLSRDPSPPLEPL  
 EELSGDGGPAAEFAHNCDDASISSFSLGGVGSSSSLPQSRQGLSPEQEETASLVSTGLVPEGIYLP  
 PPGYQLVPDTQWEQLQTEGRQLQKDLSEVSRERDELQEGLRSSNEDCAKQMQVLLAQVQNSEQLLRTLQG  
 TVSQAQERVQLQMAELVTTHKCLHHEVKRLNEENQGLRAEQLPSSAPQGSQQEQEESLPSVPELQQL  
 LCCTRQEARARLQAQEHGAERLRIEIVTLREALLEETVARASLEGQLRVQREETEVLEASLCSLRTEMER  
 VQQEQSKAQLPDLLEQRAKVLRLQAELETSEQVQRDFVRLSQALQVRLERIRQAETLEQVRSIMDEAPL  
 TDVRDIKDT

**TR**TRPLEQKLISEEDLAANDILDYKDDDDKV

**Chromatograms:**

[https://cdn.origene.com/chromatograms/mk8041\\_b04.zip](https://cdn.origene.com/chromatograms/mk8041_b04.zip)

**Restriction Sites:**

Sgfl-Mlul

**Cloning Scheme:**


**ACCN:** NM\_024816

**ORF Size:** 1707 bp

**OTI Disclaimer:** The molecular sequence of this clone aligns with the gene accession number as a point of reference only. However, individual transcript sequences of the same gene can differ through naturally occurring variations (e.g. polymorphisms), each with its own valid existence. This clone is substantially in agreement with the reference, but a complete review of all prevailing variants is recommended prior to use. [More info](#)

**OTI Annotation:** This clone was engineered to express the complete ORF with an expression tag. Expression varies depending on the nature of the gene.

**Components:** The ORF clone is ion-exchange column purified and shipped in a 2D barcoded Matrix tube containing 10ug of transfection-ready, dried plasmid DNA (reconstitute with 100 ul of water).

- Reconstitution Method:**
1. Centrifuge at 5,000xg for 5min.
  2. Carefully open the tube and add 100ul of sterile water to dissolve the DNA.
  3. Close the tube and incubate for 10 minutes at room temperature.
  4. Briefly vortex the tube and then do a quick spin (less than 5000xg) to concentrate the liquid at the bottom.
  5. Store the suspended plasmid at -20°C. The DNA is stable for at least one year from date of shipping when stored at -20°C.

**RefSeq:** [NM\\_024816.3](#)

**RefSeq Size:** 2280 bp

**RefSeq ORF:** 1710 bp

**Locus ID:** 79874

**UniProt ID:** [Q9H5N1](#)

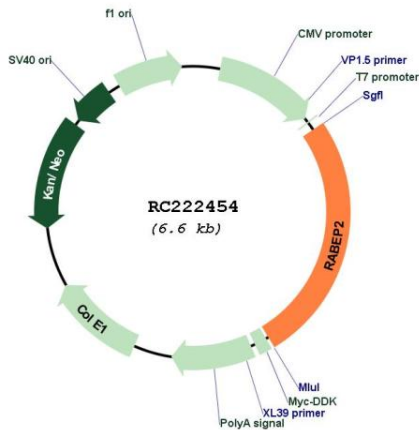
**Cytogenetics:** 16p11.2

**Domains:** Rabaptin

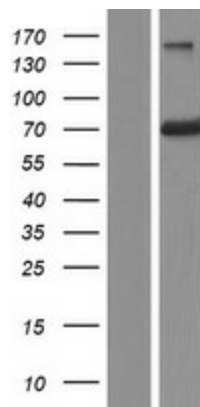
**MW:** 63.4 kDa

**Gene Summary:** Plays a role in membrane trafficking and in homotypic early endosome fusion (PubMed:9524116). Participates in arteriogenesis by regulating vascular endothelial growth factor receptor 2/VEGFR2 cell surface expression and endosomal trafficking (PubMed:29425100). By interacting with SDCCAG8, localizes to centrosomes and plays a critical role in ciliogenesis (PubMed:27224062).[UniProtKB/Swiss-Prot Function]

**Product images:**



Circular map for RC222454



Western blot validation of overexpression lysate (Cat# [LY411037]) using anti-DDK antibody (Cat# [TA50011-100]). Left: Cell lysates from untransfected HEK293T cells; Right: Cell lysates from HEK293T cells transfected with RC222454 using transfection reagent MegaTran 2.0 (Cat# [TT210002]).