

Product datasheet for **RC222447**

SPAG11A (NM_001081552) Human Tagged ORF Clone

Product data:

Product Type: Expression Plasmids
Product Name: SPAG11A (NM_001081552) Human Tagged ORF Clone
Tag: Myc-DDK
Symbol: SPAG11A
Synonyms: EDDM2A; HE2
Mammalian Cell Selection: Neomycin
Vector: pCMV6-Entry (PS100001)
E. coli Selection: Kanamycin (25 ug/mL)
ORF Nucleotide Sequence: >RC222447 representing NM_001081552
Red=Cloning site **Blue**=ORF **Green**=Tags(s)

TTTTGTAATACGACTCACTATAGGGCGGCCGGAATTCGTCGACTGGATCCGGTACCGAGGAGATCTGCC
GCC**CGGATCGCC**

ATGAGGCAACGATTGCTCCCGTCCGTCACCAGCCTTCTCCTTGTGGCCCTGCTGTTCCAGGATCGTCTC
AAGCCAGACATGTGAACCACTCAGCCACTGAGGCTCTCGGAGAACTCAGGGAAAGAGCCCCTGGCAAGG
CACAAACGGGTTTCAGCTGCTACGCCACGCAGTAAACGGGACCTTTACCACCGCGCACCCACCTTAC
CAAGGGGATGTTCCACTGGGAATTAGAAATACCATCTGCCGATGCAGCAAGGGATCTGCAGACTTTTTT
TCTGCCATTCTGGGACAGGCCAGCAGCACAGACAACGCTGTGGA

ACGCGTACGCGGCCGCTCGAGCAGAAACTCATCTCAGAAGAGGATCTGGCAGCAAATGATATCCTGGATT
ACAAGGATGACGACGATAAGGTTTAA

Protein Sequence: >RC222447 representing NM_001081552
Red=Cloning site **Green**=Tags(s)
MRQRLLPSVTSLLLVALLLFPGSSQARHVNHSATEALGELRERAPGQGTNGFQLLRHAVKRDLLPPRTPPY
QGDVPLGIRNTICRMQQGICRLFFCHSGTGQQRQRCCG

TRTRPLEQK**L**ISEEDLAANDILDYKDDDDKV

Chromatograms: https://cdn.origene.com/chromatograms/mk8041_b05.zip

Restriction Sites: SgfI-MluI



[View online »](#)

Cloning Scheme:


ACCN: NM_001081552

ORF Size: 324 bp

OTI Disclaimer: The molecular sequence of this clone aligns with the gene accession number as a point of reference only. However, individual transcript sequences of the same gene can differ through naturally occurring variations (e.g. polymorphisms), each with its own valid existence. This clone is substantially in agreement with the reference, but a complete review of all prevailing variants is recommended prior to use. [More info](#)

OTI Annotation: This clone was engineered to express the complete ORF with an expression tag. Expression varies depending on the nature of the gene.

Components: The ORF clone is ion-exchange column purified and shipped in a 2D barcoded Matrix tube containing 10ug of transfection-ready, dried plasmid DNA (reconstitute with 100 ul of water).

- Reconstitution Method:**
1. Centrifuge at 5,000xg for 5min.
 2. Carefully open the tube and add 100ul of sterile water to dissolve the DNA.
 3. Close the tube and incubate for 10 minutes at room temperature.
 4. Briefly vortex the tube and then do a quick spin (less than 5000xg) to concentrate the liquid at the bottom.
 5. Store the suspended plasmid at -20°C. The DNA is stable for at least one year from date of shipping when stored at -20°C.

RefSeq: [NM_001081552.3](#)

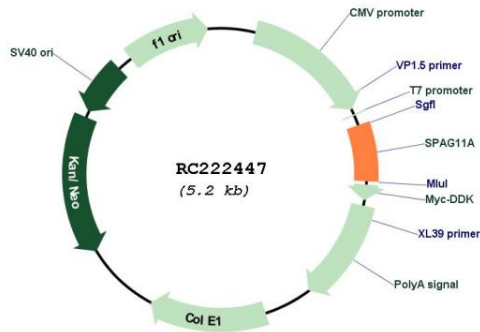
RefSeq Size: 756 bp

RefSeq ORF: 327 bp

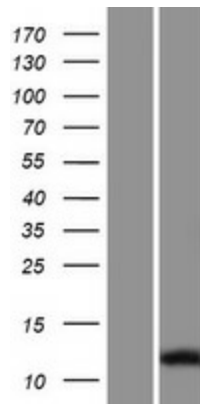
Locus ID: 653423

UniProt ID: [Q6PDA7](#)
 Cytogenetics: 8p23.1
 MW: 11.8 kDa
 Gene Summary: May have antimicrobial activity. May also play a role sperm maturation, storage, and protection.[UniProtKB/Swiss-Prot Function]

Product images:



Circular map for RC222447



Western blot validation of overexpression lysate (Cat# [LY421162]) using anti-DDK antibody (Cat# [TA50011-100]). Left: Cell lysates from untransfected HEK293T cells; Right: Cell lysates from HEK293T cells transfected with RC222447 using transfection reagent MegaTran 2.0 (Cat# [TT210002]).