

Product datasheet for **RC222435**

Lamin A (LMNA) (NM_170708) Human Tagged ORF Clone

Product data:

Product Type:	Expression Plasmids
Product Name:	Lamin A (LMNA) (NM_170708) Human Tagged ORF Clone
Tag:	Myc-DDK
Symbol:	Lamin A
Synonyms:	CDCD1; CDDC; CMD1A; CMT2B1; EMD2; FPL; FPLD; FPLD2; HGPS; IDC; LDP1; LFP; LGMD1B; LMN1; LMNC; LMNL1; MADA; PRO1
Mammalian Cell Selection:	Neomycin
Vector:	pCMV6-Entry (PS100001)
E. coli Selection:	Kanamycin (25 ug/mL)



[View online »](#)

ORF Nucleotide
Sequence:

>RC222435 representing NM_170708
Red=Cloning site Blue=ORF Green=Tags(s)

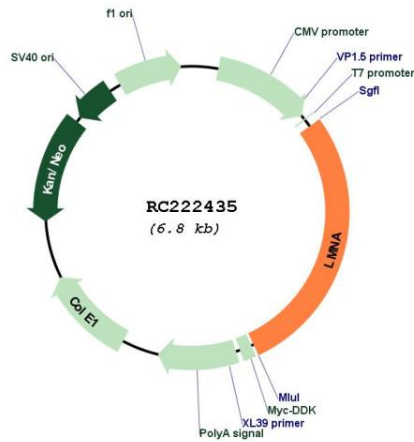
TTTTGTAATACGACTCACTATAGGGCGGCCGGAATTCGTCGACTGGATCCGGTACCGAGGAGATCTGCC
GCCGCGATCGCC

ATGGAGACCCCGTCCCAGCGGCGGCCACCCCGAGCGGGGCGCAGGCCAGCTCCACTCCGCTGTCGCCCCA
CCCGCATCACCCGGCTGCAGGAGAAGGAGGACCTGCAGGAGCTCAATGATCGCTTGGCGGTCTACATCGA
CCGTGTGCGCTCGCTGGAACCGGAGAACGCAGGGCTGCGCCTTCGCATCACCGAGTCTGAAGAGGTGGTC
AGCCGCGAGGTGTCCGGCATCAAGGCCGCTACGAGGCCGAGCTCGGGGATGCCCGCAAGACCCCTTGACT
CAGTAGCCAAGGAGCGCGCCCGCTGCAGCTGGAGCTGAGCAAAGTGCCTGAGGAGTTTAAAGAGCTGAA
AGCGCGCAATACCAAGAAGGAGGGTGACCTGATAGCTGCTCAGGCTCGGCTGAAGACCTGGAGGCTCTG
CTGAACTCCAAGGAGGCCGACTGAGCACTGCTCTCAGTGAAGCGCACGCTGGAGGGCGAGCTGCATG
ATCTCGGGGCCAGGTGGCCAAGCTTGAGGCAGCCCTAGGTGAGGCCAAGAAGCAACTTCAGGATGAGAT
GCTGCGGGGGTGGATGTGAGAACAGGCTGCAGACCATGAAGGAGGAAGTGGACTTCCAGAAGAATC
TACAGTGAGGAGCTGCGTGAGACCAAGCGCCGTATGAGACCCGACTGGTGGAGATTGACAATGGGAAGC
AGCGTGAGTTTGAAGCCGGCTGGCGGATGCGCTGCAGGAAGTGCAGGCCAGCATGAGGACCAGGTGGA
GCAGTATAAGAAGGAGCTGGAGAAGACTTATTCTGCCAAGCTGGACAATGCCAGGCAGTCTGCTGAGAGG
AACAGCAACCTGGTGGGGCTGCCACGAGGAGCTGCAGCAGTCGCGCATCCGCATCGACAGCCTCTCTG
CCCAGCTCAGCCAGCTCCAGAAGCAGCTGGCAGCCAAGGAGGCGAAGCTTCGAGACCTGGAGGACTCACT
GGCCCGTGAGCGGGACACCAGCCGGCGGCTGCTGGCGGAAAAGGAGCGGGAGATGGCCGAGATGCGGGCA
AGGATGCAGCAGCAGCTGGACGAGTACCAGGAGCTTCTGGACATCAAGCTGGCCCTGGACATGGAGATCC
ACGCCTACCGCAAGCTCTTGAGGGCGAGGAGGAGGCTACGCCTGTCCCCAGCCCTACCTCGCAGCG
CAGCCGTGGCCGTGCTTCTCTCACTATCCAGACACAGGGTGGGGGCAGCGTCACCAAAAAGCGCAAA
CTGGAGTCCACTGAGAGCCGAGCAGCTTCTCACAGCACGCACGCACTAGCGGGCGCTGGCCGTGGAGG
AGGTGGATGAGGAGGGCAAGTTTGTCCGGCTGCGCAACAAGTCCAATGAGGACCAGTCCATGGGCAATTG
GCAGATCAAGCGCCAGAATGGAGATGATCCCTTGCTGACTTACCGGTTCCACCAAAAGTTACCCTGAAG
GCTGGGCAGGTGGTGACGATCTGGGCTGCAGGAGCTGGGGCCACCCACAGCCCCCTACCGACTGGTGT
GGAAGGCACAGAACCTGGGGCTGCGGGAACAGCCTGCGTACGGCTCTCATCAACTCCACTGGGGAAGG
CTCCCACTGCAGCAGCTCGGGGACCCCGCTGAGTACAACCTGCGCTCGCGCACCGTGTGTGCGGGACC
TGCGGGCAGCCTGCCGACAAGGCATCTGCCAGCGCTCAGGAGCCAGGTGGGCGGACCCATCTCCTCTG
GCTCTTCTGCCTCAAGTGTACGGTCACTCGCAGCTACCGCAGTGTGGGGGCAGTGGGGGTGGCAGCTT
CGGGGACAATCTGGTACCCGCTCTACCTCTGGGCAACTCCAGCCCCGAACCCAGAGCCCCCAGAAC
TGCAGCATCATG

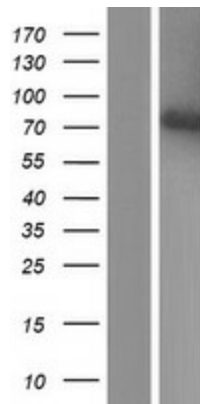
ACGCGTACGCGGCCGCTCGAGCAGAACTCATCTCAGAAGAGGATCTGGCAGCAATGATATCCTGGATT
ACAAGGATGACGACGATAAGGTTTAA

Reconstitution Method:	<ol style="list-style-type: none">1. Centrifuge at 5,000xg for 5min.2. Carefully open the tube and add 100ul of sterile water to dissolve the DNA.3. Close the tube and incubate for 10 minutes at room temperature.4. Briefly vortex the tube and then do a quick spin (less than 5000xg) to concentrate the liquid at the bottom.5. Store the suspended plasmid at -20°C. The DNA is stable for at least one year from date of shipping when stored at -20°C.
RefSeq:	NM_170708.4
RefSeq Size:	3091 bp
RefSeq ORF:	1905 bp
Locus ID:	4000
UniProt ID:	P02545
Cytogenetics:	1q22
Protein Families:	Druggable Genome
Protein Pathways:	Arrhythmogenic right ventricular cardiomyopathy (ARVC), Dilated cardiomyopathy, Hypertrophic cardiomyopathy (HCM)
MW:	70.5 kDa
Gene Summary:	<p>The nuclear lamina consists of a two-dimensional matrix of proteins located next to the inner nuclear membrane. The lamin family of proteins make up the matrix and are highly conserved in evolution. During mitosis, the lamina matrix is reversibly disassembled as the lamin proteins are phosphorylated. Lamin proteins are thought to be involved in nuclear stability, chromatin structure and gene expression. Vertebrate lamins consist of two types, A and B. Alternative splicing results in multiple transcript variants. Mutations in this gene lead to several diseases: Emery-Dreifuss muscular dystrophy, familial partial lipodystrophy, limb girdle muscular dystrophy, dilated cardiomyopathy, Charcot-Marie-Tooth disease, and Hutchinson-Gilford progeria syndrome. [provided by RefSeq, Apr 2012]</p>

Product images:



Circular map for RC222435



Western blot validation of overexpression lysate (Cat# [LY406887]) using anti-DDK antibody (Cat# [TA50011-100]). Left: Cell lysates from untransfected HEK293T cells; Right: Cell lysates from HEK293T cells transfected with RC222435 using transfection reagent MegaTran 2.0 (Cat# [TT210002]).