

Product datasheet for **RC222432**

PDGF beta (PDGFB) (NM_033016) Human Tagged ORF Clone

Product data:

Product Type:	Expression Plasmids
Product Name:	PDGF beta (PDGFB) (NM_033016) Human Tagged ORF Clone
Tag:	Myc-DDK
Symbol:	PDGF beta
Synonyms:	c-sis; IBGC5; PDGF-2; PDGF2; SIS; SSV
Mammalian Cell Selection:	Neomycin
Vector:	pCMV6-Entry (PS100001)
E. coli Selection:	Kanamycin (25 ug/mL)
ORF Nucleotide Sequence:	>RC222432 representing NM_033016 Red=Cloning site Blue=ORF Green=Tags(s)

TTTTGTAATACGACTCACTATAGGGCGCCGGGAATTCGTCGACTGGATCCGGTACCGAGGAGATCTGCC
GCC**CGATCGCC**

ATGTTTATCATGGGCTCGGGGACCCATTCCCGAGGAGCTTTATGAGATGCTGAGTGACCACTCGATCC
GCTCCTTTGATGATCTCCAACGCCTGCTGCACGGAGACCCCGGAGAGGAAGATGGGGCCGAGTTGGACCT
GAACATGACCCGCTCCCACTCTGGAGGCGAGCTGGAGAGCTTGGCTCGTGAAGAAGGAGCCTGGGTTC
CTGACCATTGCTGAGCCGCCATGATCGCCGAGTGCAAGACGCGCACCGAGGTGTTCCGAGATCTCCCGG
GCCTCATAGACCGCACCAACGCCAACTTCTGGTGTGGCCGCCCTGTGTGGAGGTGCAGCGCTGCTCCGG
CTGCTGCAACAACCGCAACGTGCAGTGCCGCCACCCAGGTGCAGCTGCGACCTGTCCAGGTGAGAAAG
ATCGAGATTGTGCGGAAGAAGCCAATCTTTAAGAAGGCCACGGTGACGCTGGAAGACCACCTGGCATGCA
AGTGTGAGACAGTGGCAGCTGCACGGCCTGTGACCCGAAGCCCGGGGGTTCAGGAGCAGCGAGCCAA
AACGCCCAAACCTCGGGTGACCATTCGGACGGTGCAGTCCGCCGGCCCCCAAGGGCAAGCACCGGAAA
TTCAAGCACACGCATGACAAGACGGCACTGAAGGAGACCCTTGGAGCC

ACGCGTACGCGGGCCGCTCGAGCAGAACTCATCTCAGAAGAGGATCTGGCAGCAAATGATATCCTGGATT
ACAAGGATGACGACGATAAGGTTTAA



[View online »](#)

Reconstitution Method:

1. Centrifuge at 5,000xg for 5min.
2. Carefully open the tube and add 100ul of sterile water to dissolve the DNA.
3. Close the tube and incubate for 10 minutes at room temperature.
4. Briefly vortex the tube and then do a quick spin (less than 5000xg) to concentrate the liquid at the bottom.
5. Store the suspended plasmid at -20°C. The DNA is stable for at least one year from date of shipping when stored at -20°C.

RefSeq: [NM_033016.3](#), [NP_148937.1](#)

RefSeq Size: 2378 bp

RefSeq ORF: 681 bp

Locus ID: 5155

UniProt ID: [P01127](#)

Cytogenetics: 22q13.1

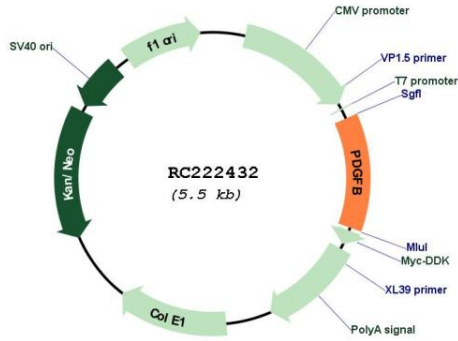
Protein Families: Druggable Genome

Protein Pathways: Cytokine-cytokine receptor interaction, Focal adhesion, Gap junction, Glioma, MAPK signaling pathway, Melanoma, Pathways in cancer, Prostate cancer, Regulation of actin cytoskeleton, Renal cell carcinoma

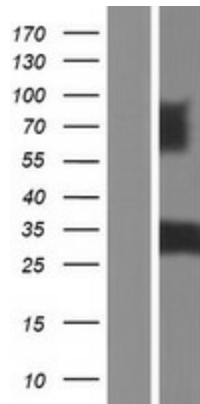
MW: 25.3 kDa

Gene Summary: This gene encodes a member of the protein family comprised of both platelet-derived growth factors (PDGF) and vascular endothelial growth factors (VEGF). The encoded preproprotein is proteolytically processed to generate platelet-derived growth factor subunit B, which can homodimerize, or alternatively, heterodimerize with the related platelet-derived growth factor subunit A. These proteins bind and activate PDGF receptor tyrosine kinases, which play a role in a wide range of developmental processes. Mutations in this gene are associated with meningioma. Reciprocal translocations between chromosomes 22 and 17, at sites where this gene and that for collagen type 1, alpha 1 are located, are associated with dermatofibrosarcoma protuberans, a rare skin tumor. Alternative splicing results in multiple transcript variants. [provided by RefSeq, Oct 2015]

Product images:



Circular map for RC222432



Western blot validation of overexpression lysate (Cat# [LY409779]) using anti-DDK antibody (Cat# [TA50011-100]). Left: Cell lysates from untransfected HEK293T cells; Right: Cell lysates from HEK293T cells transfected with RC222432 using transfection reagent MegaTran 2.0 (Cat# [TT210002]).