

## Product datasheet for **RC222421**

### **FGFR4 (NM\_213647) Human Tagged ORF Clone**

#### **Product data:**

Product Type:	Expression Plasmids
Product Name:	FGFR4 (NM_213647) Human Tagged ORF Clone
Tag:	Myc-DDK
Symbol:	FGFR4
Synonyms:	CD334; JTK2; TKF
Mammalian Cell Selection:	Neomycin
Vector:	pCMV6-Entry (PS100001)
E. coli Selection:	Kanamycin (25 ug/mL)



[View online »](#)

**ORF Nucleotide Sequence:**

>RC222421 representing NM\_213647  
 Red=Cloning site Blue=ORF Green=Tags(s)

TTTTGTAATACGACTCACTATAGGGCGGCCGGAATTCGTCGACTGGATCCGGTACCGAGGAGATCTGCC  
 GCC**CGCATCGCC**

ATGCGGCTGCTGCTGGCCCTGTTGGGGTCTGCTGAGTGTGCCTGGCCCTCCAGTCTTGTCCCTGGAGG  
 CCTCTGAGGAAGTGGAGCTTGGCCCTGCCTGGCTCCCAGCCTGGAGCAGCAAGAGCAGGAGCTGACAGT  
 AGCCCTTGGGCAGCCTGTGCGTCTGTGCTGTGGGCGGGCTGAGCGTGGTGGCCACTGGTACAAGGAGGGC  
 AGTCGCTGGCACCTGCTGGCCGTGTACGGGGTGGAGGGCCGCCTAGAGATTGCCAGTCTCTACCTG  
 AGGATGCTGGCCGCTACCTCTGCCTGGCACGAGGCTCCATGATCGTCTGCAGAACTCACCTTGATTAC  
 AGGTGACTCCTTGACCTCCAGCAACGATGATGAGGACCCCAAGTCCCATAGGGACCCCTCGAATAGGCAC  
 AGTTACCCCGCAGCAAGCACCCCTACTGGACACACCCCGAGCGCATGGAGAAGAACTGCATGCAGTACCTG  
 CGGGGAACACCGTCAAGTCCGCTGTCCAGCTGCAGGCAACCCCGCCACCATCCGCTGGCTTAAGGA  
 TGGACAGGCCTTTCATGGGGAGAACCATTGGAGGCATTCGGCTGCGCCATCAGCACTGGAGTCTCGTG  
 ATGGAGAGCGTGGTGCCTCGGACCGCGGCACATACACCTGCCTGGTAGAGAACGCTGTGGGCAGCATCC  
 GCTATAACTACCTGCTAGATGTGCTGGAGCGGTCCCCGACCCGGCCCATCTGCAGGCGGGCTCCCCGGC  
 CAACACCACAGCCGTGGTGGGCAGCGAGCTGGAGCTGCTGTGCAAGGTGTACAGCGATGCCAGCCCCAC  
 ATCCAGTGGTGAAGCACATCGTCATCAACGGCAGCAGCTTCGGAGCCGACGGTTTCCCCTATGTGCAAG  
 TCCTAAAGACTGCAGACATCAATAGCTCAGAGGTGGAGGTCTGTACCTGCGGAACGTGTGAGCCGAGGA  
 CGCAGGCGAGTACACCTGCCTCGCAGGCAATCCATCGGCCTCTCTACCAGTCTGCCTGGCTCACGGTG  
 CTGCCAGAGGAGGACCCACATGGACCGCAGCAGCGCCGAGGCCAGGTATACGGACATCATCTGTACG  
 CGGCGGCCTCCCTGGCCTTGGCTGTCTCCTGCTGCTGGCCGGGTGTATCGAGGGCAGGCGCTCCACGG  
 CCGGCACCCCGCCCGCCGCACTGTGCAGAAGCTCTCCCGCTTCCCTCTGGCCCGACAGTTCTCCCTG  
 GAGTCAGGCTCTTCCGGCAAGTCAAGTCAATCCCTGGTACGAGGCGTGCCTCTCTCTCCAGCGCCCCG  
 CCTTGCTCGCCGGCTCGTGAAGTCTAGATCTACCTCTCGACCCACTATGGGAGTCCCCCGGGACAGGCT  
 GGTGCTTGGGAAGCCCTAGGCGAGGGCTGCTTTGGCCAGGTAGTACGTGCAGAGGCTTTGGCATGGAC  
 CCTGCCCGGCTGACCAAGCCAGCACTGTGGCCGTCAAGATGCTCAAAGACAACGCCTCTGACAAGGACC  
 TGGCCGACCTGGTCTCGGAGATGGAGGTGATGAAGCTGATCGGCCGACACAAGAATCATCAACCTGCT  
 TGGTGTCTGCACCCAGGAAGGGCCCTGTACGTGATCGTGGAGTGCGCCCAAGGAAACCTGCGGGAG  
 TTCTGCGGGCCCGGCCCGCCAGGCCCGACCTCAGCCCCGACGGTCTCGGAGCAGTGAAGGGCCGC  
 TCTCCTTCCAGTCTGTCTCCTGCGCCTACCAGGTGGCCCGAGGCATGCAGTATCTGGAGTCCCGGAA  
 GTGATCCACCGGACCTGGCTGCCCGCAATGTGCTGGTACTGAGGACAATGTGATGAAGATTGCTGAC  
 TTTGGGCTGGCCCGCGCGTCCACCACATTGACTACTATAAGAAAACAGCAACGGCCCGCTGCCTGTGA  
 AGTGGATGGCGCCGAGGCTTGTGTTGACCGGGTGTACACACACCAGAGTACGCTGTGGTCTTTGGGAT  
 CCTGCTATGGGAGATCTTACCCCTCGGGGGCTCCCCGATCCTGGCATCCCGGTGGAGGAGCTGTTCTCG  
 CTGCTGCGGGAGGGACATCGGATGGACCGACCCCACTGCCCCCAGAGCTGTACGGGCTGATGCGTG  
 AGTGTGGCACGACGCGCCCTCCAGAGGCTACCTTCAAGCAGCTGGTGGAGGCGCTGGACAAGGTCTCT  
 GCTGGCCGTCTCTGAGGAGTACCTCGACCTCCGCTGACCTTCGACCCATTCCCCCTCTGGTGGGGAC  
 GCCAGCAGCACCTGCTCCTCCAGCGATTCTGTCTCAGCCACGACCCCTGCCATTGGGATCCAGTCTCT  
 TCCCCTCGGGTCTGGGTGCAGACA

**ACCGGCCGCTCGAGCAGAACTCATCTCAGAAGAGGATCTGGCAGCAAATGATATCCTGGA**  
**TTACAAGGATGACGACGATAAGGTTTAA**

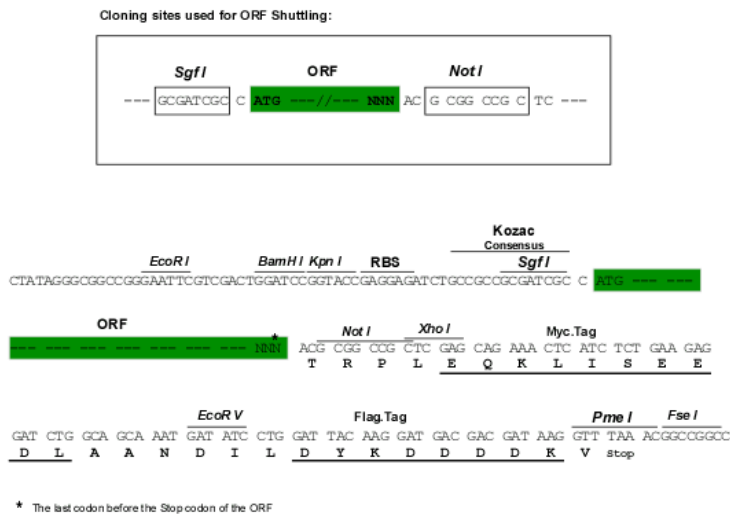
**Protein Sequence:** >RC222421 representing NM\_213647  
Red=Cloning site Green=Tags(s)

MRLLLALLGVLLSVPGPPVLSEASEEVELEPCLAPSLEQQEQELTVALGQPVRLCCGRAERGGHWYKEG  
SRLAPAGRVRGWRGRLEIASFLPEDAGRYLCLARGSMIVLQNLTLITGDSL TSSNDEDPKSHRDP SNRH  
SYPQQAPYWTHPQRMEKKLHAVPAGNTVKFRCPAAGNPTPTIRWLKDGQAFHGENRIGGIRLRHQHWSLV  
MESVVPSDRGTYTCLVENAVGSIRYNYLLDVLERSPHRPILQAGLPANTTAVVGSDEVLLCKVYSDAQP  
IQWLKHIVINGSSFADGFYVQLKTADINSSEVEVLYLRNVAEDAGEYTCLAGNSIGLSYQSAWLT  
LPEEDPTWTAAPARYTDIILYASGSLALAVLLLLAGLYRQALHGRHPRPPATVQKLSRFPLARQFSL  
ESGSSGKSSSSLVRGVRSSSGPALLAGLVSLDPLDPLWEFPRDRLVLGKPLGEGCFGQVVRAEAFGMD  
PARPDQASTVAVKMLKDNASDKDLADLVSEMEVMKLI GRHKNIINLLGVCTQEGPLYVIVECAAKGNLRE  
FLRARRPPGPDLS PDGPRSSEGPLSFPVLVSCAYQVARGMQYLESRKCIHRDLAARNVLTEDNVMKIAD  
FGLARGVHHIDYKKT SNGRLPVKWMPEALFDRVYTHQSDVWSFGILLWEIFTLGGSPYPGIPVEELFS  
LLREGHRMDRPPHCPELYGLMRECWAAPSQRPTFKQLVEALDKVLLAVSEEYLDLRLTFGPYSPSGGD  
ASSTCSSSDSVFSDHPLPLGSSSFPFGSGVQT

TRRLEQKLISEEDLAANDILDYKDDDDKV

**Chromatograms:** [https://cdn.origene.com/chromatograms/mg2663\\_c04.zip](https://cdn.origene.com/chromatograms/mg2663_c04.zip)

**Restriction Sites:** SgfI-NotI

**Cloning Scheme:**


**ACCN:** NM\_213647

**ORF Size:** 2406 bp

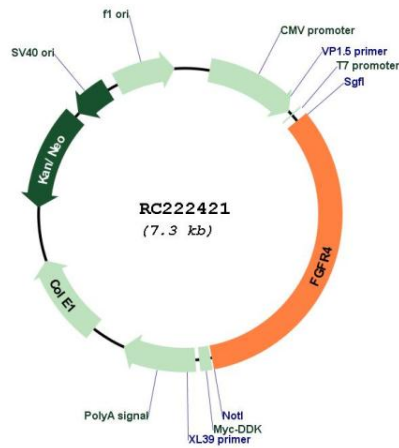
**OTI Disclaimer:** The molecular sequence of this clone aligns with the gene accession number as a point of reference only. However, individual transcript sequences of the same gene can differ through naturally occurring variations (e.g. polymorphisms), each with its own valid existence. This clone is substantially in agreement with the reference, but a complete review of all prevailing variants is recommended prior to use. [More info](#)

**OTI Annotation:** This clone was engineered to express the complete ORF with an expression tag. Expression varies depending on the nature of the gene.

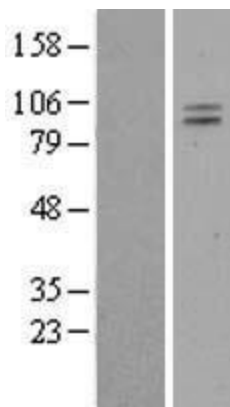
**Components:** The ORF clone is ion-exchange column purified and shipped in a 2D barcoded Matrix tube containing 10ug of transfection-ready, dried plasmid DNA (reconstitute with 100 ul of water).

<b>Reconstitution Method:</b>	<ol style="list-style-type: none"><li>1. Centrifuge at 5,000xg for 5min.</li><li>2. Carefully open the tube and add 100ul of sterile water to dissolve the DNA.</li><li>3. Close the tube and incubate for 10 minutes at room temperature.</li><li>4. Briefly vortex the tube and then do a quick spin (less than 5000xg) to concentrate the liquid at the bottom.</li><li>5. Store the suspended plasmid at -20°C. The DNA is stable for at least one year from date of shipping when stored at -20°C.</li></ol>
<b>RefSeq:</b>	<a href="#">NM_213647.3</a>
<b>RefSeq Size:</b>	3084 bp
<b>RefSeq ORF:</b>	2409 bp
<b>Locus ID:</b>	2264
<b>UniProt ID:</b>	<a href="#">P22455</a>
<b>Cytogenetics:</b>	5q35.2
<b>Protein Families:</b>	Druggable Genome, Protein Kinase
<b>Protein Pathways:</b>	Endocytosis, MAPK signaling pathway, Regulation of actin cytoskeleton
<b>MW:</b>	85.5 kDa
<b>Gene Summary:</b>	<p>The protein encoded by this gene is a tyrosine kinase and cell surface receptor for fibroblast growth factors. The encoded protein is involved in the regulation of several pathways, including cell proliferation, cell differentiation, cell migration, lipid metabolism, bile acid biosynthesis, vitamin D metabolism, glucose uptake, and phosphate homeostasis. This protein consists of an extracellular region, composed of three immunoglobulin-like domains, a single hydrophobic membrane-spanning segment, and a cytoplasmic tyrosine kinase domain. The extracellular portion interacts with fibroblast growth factors, setting in motion a cascade of downstream signals, ultimately influencing mitogenesis and differentiation. [provided by RefSeq, Aug 2017]</p>

Product images:



Circular map for RC222421



Western blot validation of overexpression lysate (Cat# [LY403876]) using anti-DDK antibody (Cat# [TA50011-100]). Left: Cell lysates from untransfected HEK293T cells; Right: Cell lysates from HEK293T cells transfected with RC222421 using transfection reagent MegaTran 2.0 (Cat# [TT210002]).