

Product datasheet for **RC222419**

SPINT4 (NM_178455) Human Tagged ORF Clone

Product data:

Product Type: Expression Plasmids
Product Name: SPINT4 (NM_178455) Human Tagged ORF Clone
Tag: Myc-DDK
Symbol: SPINT4
Synonyms: C20orf137; dj601O1.1; SPINT3
Mammalian Cell Selection: Neomycin
Vector: pCMV6-Entry (PS100001)
E. coli Selection: Kanamycin (25 ug/mL)
ORF Nucleotide Sequence: >RC222419 representing NM_178455
Red=Cloning site Blue=ORF Green=Tags(s)

TTTTGTAATACGACTCACTATAGGGCGGCCGGAATTCGTCGACTGGATCCGGTACCGAGGAGATCTGCC
GCC**CGATCGCC**

ATGAAGTCTGCCAAGCTGGGATTTCTTCTAAGATTCTTCATCTTCTGCTCATTGAATACCCTGTTATTGG
GTGGTGTAAATAAAATTGCGGAGAAGATATGTGGAGACCTCAAAGATCCCTGCAAATTGGACATGAATTT
TGAAGCTGCTATGAAGTTCACCTTAGATATTTCTACAACAGAACCTCCAAAAGATGTGAACTTTTGTC
TTCTCCGGCTGTAATGGCAACCTTAACAACCTTCAAGCTTAAAATAGAACGTGAAGTAGCCTGTGTGCAA
AATACAAACCACCGAGG

ACGCGTACGCGGCCGCTCGAGCAGAAACTCATCTCAGAAGAGGATCTGGCAGCAAATGATATCCTGGATT
ACAAGGATGACGACGATAAGGTTTAA

Protein Sequence: >RC222419 representing NM_178455
Red=Cloning site Green=Tags(s)
MKSAKLGFLLRFFIFCSLNTLLLGGVNKIAEKICGLDKDPCKLDMNFGSCYEVHFRYFYNRTSKRCETFV
FSGCNGNLNFKLKIERYVACVAKYKPPR

TRTRPLEQKLISEEDLAANDILDYKDDDDKV

Chromatograms: https://cdn.origene.com/chromatograms/mk8013_c11.zip

Restriction Sites: SgfI-MluI



[View online »](#)

Cloning Scheme:


ACCN: NM_178455

ORF Size: 297 bp

OTI Disclaimer: The molecular sequence of this clone aligns with the gene accession number as a point of reference only. However, individual transcript sequences of the same gene can differ through naturally occurring variations (e.g. polymorphisms), each with its own valid existence. This clone is substantially in agreement with the reference, but a complete review of all prevailing variants is recommended prior to use. [More info](#)

OTI Annotation: This clone was engineered to express the complete ORF with an expression tag. Expression varies depending on the nature of the gene.

Components: The ORF clone is ion-exchange column purified and shipped in a 2D barcoded Matrix tube containing 10ug of transfection-ready, dried plasmid DNA (reconstitute with 100 ul of water).

- Reconstitution Method:**
1. Centrifuge at 5,000xg for 5min.
 2. Carefully open the tube and add 100ul of sterile water to dissolve the DNA.
 3. Close the tube and incubate for 10 minutes at room temperature.
 4. Briefly vortex the tube and then do a quick spin (less than 5000xg) to concentrate the liquid at the bottom.
 5. Store the suspended plasmid at -20°C. The DNA is stable for at least one year from date of shipping when stored at -20°C.

RefSeq: [NM_178455.3](#)

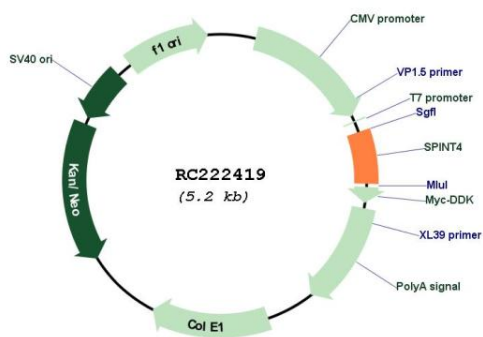
RefSeq Size: 380 bp

RefSeq ORF: 300 bp

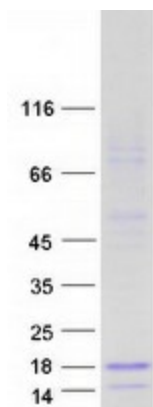
Locus ID: 391253

UniProt ID: [Q6UDR6](#)
 Cytogenetics: 20q13.12
 Protein Families: Transmembrane
 MW: 11.2 kDa

Product images:



Circular map for RC222419



Coomassie blue staining of purified SPINT4 protein (Cat# [TP322419]). The protein was produced from HEK293T cells transfected with SPINT4 cDNA clone (Cat# RC222419) using MegaTran 2.0 (Cat# [TT210002]).