

## Product datasheet for **RC222416**

### WDR23 (DCAF11) (NM\_181357) Human Tagged ORF Clone

#### Product data:

Product Type:	Expression Plasmids
Product Name:	WDR23 (DCAF11) (NM_181357) Human Tagged ORF Clone
Tag:	Myc-DDK
Symbol:	WDR23
Synonyms:	GL014; PRO2389; WDR23
Mammalian Cell Selection:	Neomycin
Vector:	pCMV6-Entry (PS100001)
E. coli Selection:	Kanamycin (25 ug/mL)



[View online »](#)

**ORF Nucleotide Sequence:**

>RC222416 representing NM\_181357  
 Red=Cloning site Blue=ORF Green=Tags(s)

TTTTGTAATACGACTCACTATAGGGCGGCCGGAATTCGTCGACTGGATCCGGTACCGAGGAGATCTGCC  
 GCC**CGGATCGCC**

ATGGGATCGCGGAACAGCAGCAGTGCAGGATCCGGTCCGGAGACCCCTCCGAGGGCTTGCSCGAAGAG  
 GGGCTGGCTGCGTCGGAGTGAGGAAGAGGAAGAAGAGGATGAAGATGTGGATCTGGCCAGGCCCTCTT  
 GGACTCAGAGGAAGAGAATGACAGAGCTTGGGATGGTCGCTTGGGGATCGATACAACCCACCTGTGGAT  
 GCTACCCCTGACACCCGGGAGCTGGAATCAATGAGATCAAGACACAAGTGAAGTGGCCACAGGGCAGC  
 TGGGGCTTAGGCGGGCCGCCAGAAGCAGAGCTTCTCGAATGTTGCACCAGAGAGAACGGGGCTCTG  
 CCATCGGGGAAGCTTCTCCCTGGAGAACAGTCTCGAGTGATATCTCACTTCTTGCCCAATGATCTGGC  
 TTCCTGATAGCTACTCTCAGAAGGCTTCTGTGGCATCTACAGCAAAGATGGTCAAATATTCATGTCTG  
 CTTGCCAAGACCAGACAATCCGACTCTATGACTGCCGATATGGCCGTTTCCGTAATTCAGAGCATCAA  
 GGCCCGCAGCTAGGCTGGAGCGTCTGGATGTGGCTTACCCCTGATGGGAACCACTTCTCTACTCT  
 AGCTGGTCTGATTACATTCATATCTGCAATATCTATGGTGAGGGAGATACACACTGCCCTGGATCTCA  
 GGCCAGATGAGCGTCGCTTGGTGTCTTCTCCATTGCTGTCTCCTCAGATGGACGAGAAGTACTAGGAGG  
 GGCCAATGATGGCTGCCTGTATGTCTTTGACCGAGAACAACCGGGCGCACCCCTTCAGATTGAGTCCCAT  
 GAGGATGATGTGAATGCAGTGGCCTTGGCTGATATAAGCTCCCAAATCCTGTTCTCTGGGGGAGATGATG  
 CCATCTGCAAAGTGTGGGATCGACGCACCATGCGGGAGGATGACCCCAAGCCTGTGGGTGCACTGGCTGG  
 ACACCAGGATGGCATCACCTTCATTGACAGCAAGGGTATGCCCGGTATCTGATCTCAACTCTAAAGAC  
 CAGACCATCAAACCTGCGGATATCCGACGCTTTCAGCCGGGAAGGCATGGAAGCTTACGCCAGGCTG  
 CCACACAGCAAACTGGGACTATCGGTGGCAGCAAGTGCACAAAAGCCTGGCGGAAGCTGAAGCTCCC  
 AGGGGACAGCTCCTTGTGACCTACCGGGGCCACGGAGTGTGCACACCCCTCATCCGCTGCCGTTCTCC  
 CCCATTATAGCACTGGCCAGCAGTTCATCTACAGTGGCTGCTCCTGCAAGTGGTTGTGTACGACC  
 TTCTAAGTGGCCACATTGTGAAGAAGCTGACCAACCACAAGCCTGTGTGCGTGACGTGAGTTGGCACCC  
 CTTTGAAGAGAAGATTGTGAGCAGTTCGTGGGACGGAACTGCGTCTGTGGCAGTACCGCCAGGCTGAG  
 TACTTCCAGGATGACATGCCAGAATCTGAGGAATGTGCCAGCGCCCTGCCCCAGTCCCAATCTCTCA  
 CACCCCTTCTCACCCAG

**ACGCGT**ACGCGGCCGCTCGAGCAGAACTCATCTCAGAAGAGGATCTGGCAGCAAATGATATCTGGATT  
 ACAAGGATGACGACGATAAGGTTTAA

**Protein Sequence:**

>RC222416 representing NM\_181357  
 Red=Cloning site Green=Tags(s)

MGRNSSSAGSGSDPSEGLPRRGAGLRRESEEEEEDEDVDLAQALLDSEEENDRAWDGRLGDRYNPPVD  
 ATPDTRELFNEIKTQVELATGQLGLRRAAQKHSFPRMLHQRERGLCHRGSFSLGEQSRVISHFLPNDLG  
 FTDSYSQKAFCGIYSKDGQIFMSACQDQTIIRLYDCRYGRFRKFKSIKARDVGVSVLDVAFTPDGNHFLYS  
 SWSDYIHCNIYGEDHTALDLRPDERRFAVFSIAVSSDGREVLGGANDGCLYVFDREQNRRTLQIESH  
 EDDVNAVAFADISSQILFSGGDDAICKVWDRRTMREDDPKVPVGGALAGHQDGIITFIDSKGDARYLISNSKD  
 QTIKLDWIRRFSSREGMEASRQAATQQNWDYRWQVPPKAWRKLKLPGDSSLMTYRHHVGLHTLIRCRFS  
 PIHSTGQQFIYSGCSTGKVVVYDILLSGHIVKLTNHKACVRDVSWHPFEEKIVSSSWDGNLRLWQYRQAE  
 YFQDDMPESEECASAPAPVPQSSTPFSSPQ

**TR**TRPLEQKLISEEDLAANDILDYKDDDDKV

**Chromatograms:**

[https://cdn.origene.com/chromatograms/mk8065\\_b12.zip](https://cdn.origene.com/chromatograms/mk8065_b12.zip)

**Restriction Sites:**

Sgfl-Mlul

**Cloning Scheme:**


**ACCN:** NM\_181357

**ORF Size:** 1560 bp

**OTI Disclaimer:** The molecular sequence of this clone aligns with the gene accession number as a point of reference only. However, individual transcript sequences of the same gene can differ through naturally occurring variations (e.g. polymorphisms), each with its own valid existence. This clone is substantially in agreement with the reference, but a complete review of all prevailing variants is recommended prior to use. [More info](#)

**OTI Annotation:** This clone was engineered to express the complete ORF with an expression tag. Expression varies depending on the nature of the gene.

**Components:** The ORF clone is ion-exchange column purified and shipped in a 2D barcoded Matrix tube containing 10ug of transfection-ready, dried plasmid DNA (reconstitute with 100 ul of water).

- Reconstitution Method:**
1. Centrifuge at 5,000xg for 5min.
  2. Carefully open the tube and add 100ul of sterile water to dissolve the DNA.
  3. Close the tube and incubate for 10 minutes at room temperature.
  4. Briefly vortex the tube and then do a quick spin (less than 5000xg) to concentrate the liquid at the bottom.
  5. Store the suspended plasmid at -20°C. The DNA is stable for at least one year from date of shipping when stored at -20°C.

**RefSeq:** [NM\\_181357.2](#), [NP\\_852002.1](#)

**RefSeq Size:** 4208 bp

**RefSeq ORF:** 1563 bp

**Locus ID:** 80344

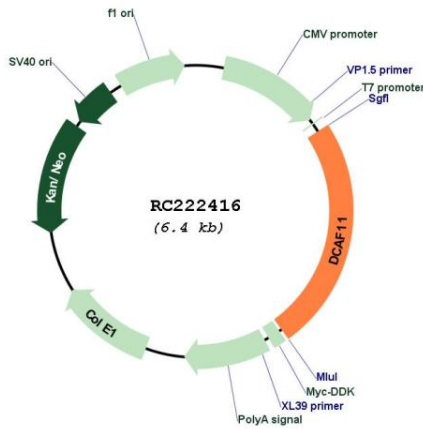
**UniProt ID:** [Q8TEB1](#)

**Cytogenetics:** 14q12

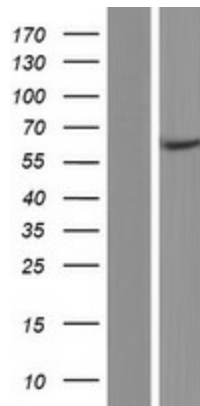
**MW:** 58.7 kDa

**Gene Summary:** This gene encodes a WD repeat-containing protein that interacts with the COP9 signalosome, a macromolecular complex that interacts with cullin-RING E3 ligases and regulates their activity by hydrolyzing cullin-Nedd8 conjugates. Multiple alternatively spliced transcript variants have been found for this gene. [provided by RefSeq, Jul 2009]

**Product images:**



Circular map for RC222416



Western blot validation of overexpression lysate (Cat# [LY405749]) using anti-DDK antibody (Cat# [TA50011-100]). Left: Cell lysates from untransfected HEK293T cells; Right: Cell lysates from HEK293T cells transfected with RC222416 using transfection reagent MegaTran 2.0 (Cat# [TT210002]).