

## Product datasheet for **RC222414**

### CCDC140 (NM\_153038) Human Tagged ORF Clone

#### Product data:

**Product Type:** Expression Plasmids  
**Product Name:** CCDC140 (NM\_153038) Human Tagged ORF Clone  
**Tag:** Myc-DDK  
**Symbol:** CCDC140  
**Synonyms:** FLJ32447; MGC133159  
**Mammalian Cell Selection:** Neomycin  
**Vector:** pCMV6-Entry (PS100001)  
**E. coli Selection:** Kanamycin (25 ug/mL)  
**ORF Nucleotide Sequence:** >RC222414 ORF sequence  
Red=Cloning site Blue=ORF Green=Tags(s)

TTTTGTAATACGACTCACTATAGGGCGGCCGGAATTCGTCGACTGGATCCGGTACCGAGGAGATCTGCC  
GCC**CGGATCGCC**

ATGGGAGATGAATGTTCAAACCCAGATCTCCTCGCTGAGCCTGGAAGCTCGCCACCGTGGGATCACGGGA  
ACCAGAGGCAAGAGGCTGCGAATGAGTCCAACACCCGCTTCCTCGAGTTTTAAAGCACACCTGGGGCC  
AGAGACTGCACAGCCAATAACGGAGTAAACGCAACAGGTGGAGGAGGCAGAGTTGTCAAGGGCCAAGC  
CCGGCGCATCTGGCCAGTTCTGGGGAGCGGACCTGGGACTGCAGAGAGGCGTTTTGAAGAGTGCTG  
CGCGCACCTGCCTCTCGGAGATCCAACCTCACCCGGGCGTCTCCTGAGAGCGCACAGTCCACAGACCC  
CGGGAGGGCTGCCGCCCTAGGACACGTAATCTCCCGACCCCTCACTCTTTCAAATTTGGGGAAGAGGCG  
GAGGAGATGAAAAAGAAGAAAGAGAGAAAAGAGAAGAAAAGAGAGAAAAGAAAGAAATTTTAAAAAA

**ACGCGT**ACGCGGCCGCTCGAGCAGAACTCATCTCAGAAGAGGATCTGGCAGCAAATGATATCCTGGATT  
ACAAGGATGACGACGATAAGGTTTAA

**Protein Sequence:** >RC222414 protein sequence  
Red=Cloning site Green=Tags(s)

MGDECSNPDLAEPGSSPPWDHGNQRQEAANESNTRVPRVLKAHLGPETAQPTKRSKRNRWRQSCQGPS  
PARSQFLGSADLGLQRGVLKSAARTCLSEISNSTRASPESAQSTDPGRAARPRTRTLPTPHSFKIGEEA  
EEMKKKKERKRRKRRKERNFKK

**TR**TRPLEQKLISEEDLAANDILDYKDDDDKV

**Chromatograms:** [https://cdn.origene.com/chromatograms/mk6459\\_a06.zip](https://cdn.origene.com/chromatograms/mk6459_a06.zip)



[View online >](#)

Restriction Sites: SgfI-MluI

Cloning Scheme:



ACCN: NM\_153038

ORF Size: 489 bp

OTI Disclaimer: The molecular sequence of this clone aligns with the gene accession number as a point of reference only. However, individual transcript sequences of the same gene can differ through naturally occurring variations (e.g. polymorphisms), each with its own valid existence. This clone is substantially in agreement with the reference, but a complete review of all prevailing variants is recommended prior to use. [More info](#)

OTI Annotation: This clone was engineered to express the complete ORF with an expression tag. Expression varies depending on the nature of the gene.

Components: The ORF clone is ion-exchange column purified and shipped in a 2D barcoded Matrix tube containing 10ug of transfection-ready, dried plasmid DNA (reconstitute with 100 ul of water).

Reconstitution Method:

1. Centrifuge at 5,000xg for 5min.
2. Carefully open the tube and add 100ul of sterile water to dissolve the DNA.
3. Close the tube and incubate for 10 minutes at room temperature.
4. Briefly vortex the tube and then do a quick spin (less than 5000xg) to concentrate the liquid at the bottom.
5. Store the suspended plasmid at -20°C. The DNA is stable for at least one year from date of shipping when stored at -20°C.

RefSeq: [NM\\_153038.1](#), [NP\\_694583.1](#)

RefSeq Size: 1699 bp

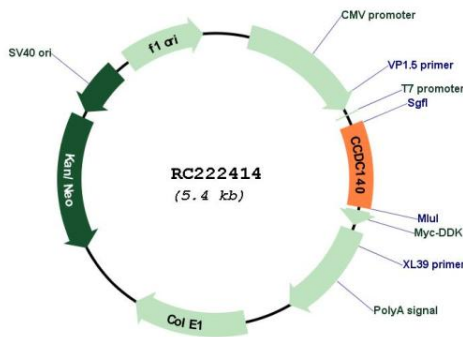
RefSeq ORF: 492 bp

Locus ID: 151278

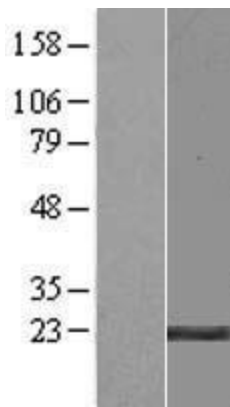
UniProt ID: [Q96MF4](#)  
 Cytogenetics: 2q36.1  
 MW: 18.3 kDa

**Gene Summary:** This gene encodes a protein that appears to be restricted to select higher primate species. This protein contains a C-terminal coiled-coil domain, which is a versatile structural motif consisting of multiple amphipathic alpha-helices that twist around each other to form a supercoil. [provided by RefSeq, Aug 2011]

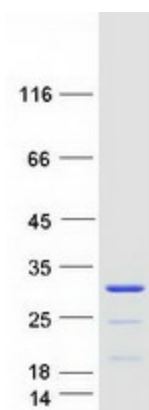
**Product images:**



Circular map for RC222414



Western blot validation of overexpression lysate (Cat# [LY407174]) using anti-DDK antibody (Cat# [TA50011-100]). Left: Cell lysates from untransfected HEK293T cells; Right: Cell lysates from HEK293T cells transfected with RC222414 using transfection reagent MegaTran 2.0 (Cat# [TT210002]).



Coomassie blue staining of purified CCDC140 protein (Cat# [TP322414]). The protein was produced from HEK293T cells transfected with CCDC140 cDNA clone (Cat# RC222414) using MegaTran 2.0 (Cat# [TT210002]).