

Product datasheet for **RC222412**

SH3D20 (ARHGAP27) (NM_199282) Human Tagged ORF Clone

Product data:

Product Type:	Expression Plasmids
Product Name:	SH3D20 (ARHGAP27) (NM_199282) Human Tagged ORF Clone
Tag:	Myc-DDK
Symbol:	SH3D20
Synonyms:	CAMGAP1; PP905; SH3D20; SH3P20
Mammalian Cell Selection:	Neomycin
Vector:	pCMV6-Entry (PS100001)
E. coli Selection:	Kanamycin (25 ug/mL)



[View online »](#)

ORF Nucleotide Sequence:

>RC222412 ORF sequence
 Red=Cloning site Blue=ORF Green=Tags(s)

TTTTGTAATACGACTCACTATAGGGCGGCCGGAATTCGTCGACTGGATCCGGTACCGAGGAGATCTGCC
 GCC**CGGATCGCC**

ATGCAGCCGGCCTGAGCCCTGGCAGCCAGGGACCCGCGGCCCCCACTCCCAGACGGACTACCCCG
 AGTCGCTGACCAGTTACCCCGAGGAGGACTATTCTCCCGTGGGCTCTTTCCGGTGAGCCCGCCCTACCTC
 TCCTTGACCACACCCCGGCTGGTCTTGTTCATGTCAGCCAGGACAAGCAGATGCTCTACACCAACCAC
 TCACTCAGGAGCAGTGGGTGAGGCTGGAGGACCCACGGGAAGCCATACTTCTACAATCCAGAGGACT
 CCTCTGTTTCGATGGGAGCTGCCAGGTCCCTGTCCCTGCCCTCGAAGCATCCATAAATCCAGCCAGGA
 TGGTGACACCCAGCCAGGCCAGCCCTCCAGAGGAGAAGGTCCAGCAGAGCTGGATGAGGTTGGGAGC
 TGGGAGGAAGTCTCTCTGCCACAGCTGCTGTGAGGACCAAGACCTTGACAAGGCAGGGGTGCTCCATC
 GCACCAAGACGGCAGACAAGGAAAGCGCTCCGGAAGAAGCACTGGAGTGCCTCCTGGACTGTGCTGGA
 GGGTGGCGTCTGACATTCTCAAGGACTCAAAGACCTCGGCTGCAGGCGCCTGAGGCAGCCTTCAAG
 TTTTCCACCCCTGAGTACACAGTGGAGCTGAGGGGGCCACTCTCTCCTGGGCCCCAAAGACAAATCCA
 GTAGGAAGAATGTCTGGAGCTACGGAGCCGAGATGGCTCTGAGTACCTGATCCAGCAGCACTCGGAGGC
 CATCATCAGCACCTGGCATAAAGCCATTGCTCAGGGCATCCAGGAGCTGTCCGCAGAGCTGCCCCAGAG
 GAGAGCGAGAGCAGCAGAGTGGACTTCCGGTCGAGCGAGCGCTTGGGAAGCTGGCAGGAGAAAGAGGAGG
 ACGCGGACCCGAATGCAGCCGCGCCCGCCTGGGCCCGTGGGCTGGAGAGCGACTTGAGCAAGGTCCG
 GCACAAGTCCGCAAGTCTCCAGAGGCGGCCACACTGCAGTCGCTGCGGGAGAAGGGCTACATCAA
 GACCAGGTGTTCCGGTCCGCGCTGGCCGCGTGTGTGAGCGCAGAGGAGCCGGTGCCACGCTTCCGTC
 AGCAGTGCATCCGCGCCGTCGAGGCCCGGGCTGGACATCGACGGGCTGTACCGCATCAGTGGAAACCT
 GGCCACCATCCAGAAGCTACGCTATAAGGTGGACCACGATGAGCGCCTGACCTGGATGACGGGCGCTGG
 GAGGACGTCCACGTTATACCGGAGCCCTGAAGCTCTTCTTTCCGGAGCTGCCCGAGCCCTCTTCCCT
 TCTCGACTTCCGCCAGTTCATTGCGGCCATCAAGTTCAGGACCAGGCCGCGCAGCCGCTGTGTGCG
 TGACTTGGTGGCTCGCTGCCGCTCCCAACCACGACACTCTGCGGATGCTCTTCCAGCACCTCTGCCGG
 GTGATCGAGCACGGGAGCAGAACCAGTGTGGTGCAGAGCGTGGCCATTGTGTTCCGGCCACGCTGC
 TGGGCCCGAGGTGGAAGAGACCAGCATGCCATGACCATGGTGTCCAGAACCAGGTGGTGGAGCTCAT
 CCTGCAGCAGTGCGGGACATCTTCCCGCCGAC

ACGCGTACGCGGCCGCTCGAGCAGAAACTCATCTCAGAAGAGGATCTGGCAGCAAATGATATCCTGGATT
 ACAAGGATGACGACGATAAGGTTTAA

Protein Sequence:

>RC222412 protein sequence
 Red=Cloning site Green=Tags(s)

MQPGLSPGSPGDRPPTPETDYPESLTSYPEEDYSPVGSFGEPPGPTSPLTTPPGWSCHVSQDKMQLYTNH
 FTQEQWVREDPHGKPYFYNPEDSSVRWELPQVPVAPRSIHKSSQDGDTPAQASPPEEKVPAELDEVGS
 WEEVSPATAAVRTKTLDKAGVLHRTKTADKGRLRKKHWSASWTVLEGGVLTFKDSKTSAAAGLRQPSK
 FSTPEYTVELRGATLSWAPKDKSSRKNVLELRSRDGSEYLIQHSEAIISTWHKAI AQGIQELSAELPPE
 ESESSRVDFGSSERLGSWQEKEDARPNAAPALGPVGLSDLKVRHKLKFLQRRPTLQSLREKGYIK
 DQVFGCALAALCERERSVPRFVQQCIRAVEARGLDIDGLYRISGNLATIQKLRKVDHDERLDDGRW
 EDVHVITGALKLFFRELPELFPF SHFRQFIAAIKLDQARRSRCVRDLVRSLPAPNHDTLRMLFQHLCR
 VIEHGEQNRMSVQSVAVIFGPTLLRPEVEET SMPMTMVFQNVVELILQQCADIFPPH

TRTRPLEQKLISEEDLAANDILDYKDDDDKV

Chromatograms:

https://cdn.origene.com/chromatograms/mk6559_b01.zip

Restriction Sites:

SgfI-MluI

Cloning Scheme:

ACCN: NM_199282

ORF Size: 1644 bp

OTI Disclaimer: The molecular sequence of this clone aligns with the gene accession number as a point of reference only. However, individual transcript sequences of the same gene can differ through naturally occurring variations (e.g. polymorphisms), each with its own valid existence. This clone is substantially in agreement with the reference, but a complete review of all prevailing variants is recommended prior to use. [More info](#)

OTI Annotation: This clone was engineered to express the complete ORF with an expression tag. Expression varies depending on the nature of the gene.

Components: The ORF clone is ion-exchange column purified and shipped in a 2D barcoded Matrix tube containing 10ug of transfection-ready, dried plasmid DNA (reconstitute with 100 ul of water).

- Reconstitution Method:**
1. Centrifuge at 5,000xg for 5min.
 2. Carefully open the tube and add 100ul of sterile water to dissolve the DNA.
 3. Close the tube and incubate for 10 minutes at room temperature.
 4. Briefly vortex the tube and then do a quick spin (less than 5000xg) to concentrate the liquid at the bottom.
 5. Store the suspended plasmid at -20°C. The DNA is stable for at least one year from date of shipping when stored at -20°C.

RefSeq: [NM_199282.3](#)
RefSeq Size: 3654 bp

RefSeq ORF: 1647 bp

Locus ID: 201176

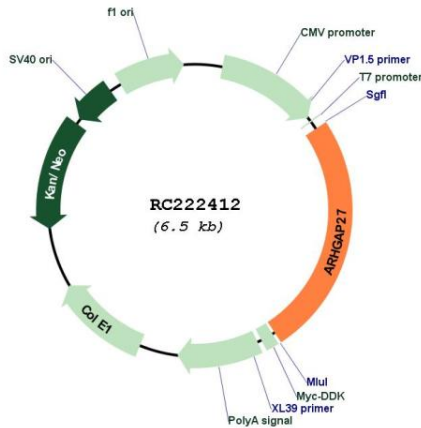
UniProt ID: [Q6ZUM4](#)

Cytogenetics: 17q21.31

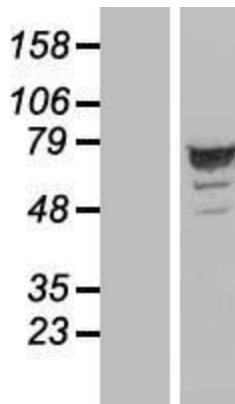
MW: 61.7 kDa

Gene Summary: This gene encodes a member of a large family of proteins that activate Rho-type guanosine triphosphate (GTP) metabolizing enzymes. The encoded protein may play a role in clathrin-mediated endocytosis. Alternatively spliced transcript variants encoding multiple isoforms have been observed for this gene. [provided by RefSeq, Aug 2013]

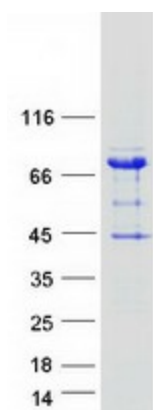
Product images:



Circular map for RC222412



Western blot validation of overexpression lysate (Cat# [LY404604]) using anti-DDK antibody (Cat# [TA50011-100]). Left: Cell lysates from untransfected HEK293T cells; Right: Cell lysates from HEK293T cells transfected with RC222412 using transfection reagent MegaTran 2.0 (Cat# [TT210002]).



Coomassie blue staining of purified ARHGAP27 protein (Cat# [TP322412]). The protein was produced from HEK293T cells transfected with ARHGAP27 cDNA clone (Cat# RC222412) using MegaTran 2.0 (Cat# [TT210002]).