

Product datasheet for **RC222411**

OGA (NM_012215) Human Tagged ORF Clone

Product data:

Product Type:	Expression Plasmids
Product Name:	OGA (NM_012215) Human Tagged ORF Clone
Tag:	Myc-DDK
Symbol:	OGA
Synonyms:	MEA5; MGEA5; NCOAT
Mammalian Cell Selection:	Neomycin
Vector:	pCMV6-Entry (PS100001)
E. coli Selection:	Kanamycin (25 ug/mL)



[View online »](#)

ORF Nucleotide Sequence:

>RC222411 representing NM_012215
 Red=Cloning site Blue=ORF Green=Tags(s)

TTTTGTAATACGACTCACTATAGGGCGGCCGGGAATTCGTCGACTGGATCCGGTACCGAGGAGATCTGCC
 GCC**CGGATCGCC**

ATGGTGCAGAAGGAGAGTCAAGCGACGTTGGAGGAGCGGGAGAGCGAGCTCAGCTCCAACCTGCCGCCT
 CTGCGGGGCATCGCTGGAGCCCGCGCAGCTCCGGCACCCGGAGAAGACAACCCCGCGGGGCTGGGGG
 AGCGGGCGGTGGCCGGGGCTGCAGGAGGGCTCGGCGGTTCTCTGCGGTGTGGTGAAGGATTTTATGGA
 AGACCTTGGGTTATGGAACAGAGAAAAGAACTCTTTAGAAGGCTCCAGAAATGGGAATTAATACATACT
 TGTATGCCCAAAGATGACTACAAACATAGGATGTTTTGGCGAGAGATGATTCAGTGGAGGAAGCTGA
 GCAACTTATGACTCTCATCTCTGCTGCACGAGAATATGAGATAGAGTTCATCTATGCGATCTCACCTGGA
 TTGGATATCACTTTTTCTAACCCCAAGGAAGTATCCACATTGAAACGTAAATTGGACCAGGTTTCTCAGT
 TTGGGTGCAGATCACTTCTGCTTTTCTGTTTGTATGATATAGACCATAATATGTGTGCAGCAGACAAAGAGT
 ATTCAGTCTTTTCTGCTCATGCCAAGTCTCCATCACAAATGAAATCTATCAGTACCTAGGAGAGCCAGAA
 ACTTTCTCTTCTGTCCACAGAATACTGTGGCACTTTCTGTTATCCAAATGTGTCTCAGTCTCCATATT
 TAAGGACTGTGGGTGAAAAGCTTCTACCTGGAATTGAAGTGCTTTGGACAGGTCCCAAAGTTGTTCTAA
 AGAAATCCAGTAGAGTCCATCGAAGAGGTTTCTAAGATTATTAAGAGAGCTCCAGTAATCTGGGATAAC
 ATTCATGCTAATGATTATGATCAGAAGAGACTGTTTCTGGGCCGTACAAGGAAGATCCACAGAACTCA
 TCCCACGGTAAAAGGAGTCTCACTAATCCAAATTGTGAATTTGAAGCCAACACTACGTTGTTATCCACAC
 CCTTGCCACCTGGTACAATCAAACATGAATGGAGTGAGAAAAGATGTAGTGACTGACAGTGAAGAT
 AGTACTGTGTCCATCCAGATAAAATAGAAAATGAAGGCAGTGTGAAGATATTGAAACTGATGTACTCT
 ATAGTCCACAGATGGCTCTAAAGCTAGCATTAAACAGAATGGTTGCAAGAGTTTGGTGTCCCTCATCAATA
 CAGCAGTAGGCAAGTTGCACACAGTGGAGCTAAAGCAAGTGTAGTTGATGGGACTCCTTTAGTTGCAGCA
 CCCTCTTTAAATGCCACAACCGTAGTAACAACAGTTTATCAGGAGCCATTATGAGCCAGGGAGCAGCCT
 TGAGTGGTGAACCTACTACTCTGACCAAGGAAGAAGAAAAGAAACAGCCTGATGAAGAACCATGGACAT
 GGTGGTGGAAAAACAAGAAGAAACGGACCACAAGAATGACAATCAAATACTGAGTGAAATTTGTTGAAGCG
 AAAATGGCAGAGGAATTGAAACCAATGGACTGATAAGAGAGCATAGCTGAATCAAATCCCAAGAGA
 TGCCATGCAAGAAGATTGATTAGTGACATTGCCCCATGCAAACCTGATGAACAGACAAACAAGGAGCA
 GTTTGTGCCAGGTCCAAATGAAAAGCCTTTGTACACTGCGGAACCAAGTACCCTGGAGGATTTGCAGTTA
 CTTGCTGATCTATTCTACCTTCTACGAGCATGGACCCAAAGGAGCACAGATGTTACGGGAATTTCAAT
 GGCTTCGAGCAAATAGTAGTGTGTGAGTCAATTGCAAAGGAAAAGACTCTGAAAAAATTTGAAGAATG
 GCGGTCACGAGCAGCAAGTTTGAAGAGATGTGTGGACTAGTGATGGGAATGTTCACTCGGCTCTCCAAT
 TGTGCCAACAGGACAATCTTTATGACATGTACTCCTATGTTGGGATATCAAGAGTATAATGTCTATGG
 TGAAGTCTTTTGTACAGTGGTTAGGGTGTGCTAGTCACTTCCAGCATAATTTAATGGAGACCAAGA
 ACCCTGGGCTTTAGAGGTGGTCTAGCAGGAGAGTTCAGCGTTTGTGCAATTTGATGGGGCAAATGAT
 CTCTTTTTTTCAGCCACCTCCACTGACTCCTACCTCAAAGTTTATACTATCAGACCTTATTTTCTAAGG
 ATGAGGCATCCGTGTACAAGATTTGCAGAGAAAATGTATGACGATGGAGTGGGTTTACCCTTTCAAAGTCA
 GCCTGATCTTATTGGAGACAAGTTAGTAGGAGGCTGCTTCCCTCAGCCTGGATTACTGCTTTGTCTTA
 GAAGATGAAGATGGCATATGTGGTTATGCCTTGGGCACTGTAGATGTGACCCCTTTATTAATAAATGTA
 AAATTTCTGGATCCCTTTCATGCAAGGAGAAGTATACCAAGCCAATGGTGACAAGGAACCTCTGAGGC
 TGAGAAAATAATGTTGAGTTTCCATGAAGAACAGGAAGTACTGCCAGAACTTTCTTTGCTAATTTCCCT
 TCTCTGATAAAGATGGACATTCACAAAAAGTAACTGACCCAAGTGTGGCCAAAAGCATGATGGCTTGC
 TCCTGTCTTCACTGAAGGCTAATGGCTCCCGGGAGCTTTCTGTGAAGTGAAGCAGATGATAAAGAAAT
 TCTGGAATTTTACAGCAAGTTAGGATGTTTTGAAATTGCAAAAATGGAAGGATTTCAAAGGATGTGGT
 ATACTTGGTCCGAGCCTG

ACGCGTACGCGGCCGCTCGAGCAGAACTCATCTCAGAAGAGGATCTGGCAGCAAATGATATCCTGGATT
 ACAAGGATGACGACGAT AAGGTTTAA

Protein Sequence: >RC222411 representing NM_012215
 Red=Cloning site Green=Tags(s)

MVQKESQATLEERESELSNPAASAGASLEPPAAPAPGEDNPAGAGGAAVAGAAGGARFLCGVVEGFYG
 RPWVMEQRKELFRRLQKWELNTYLYAPKDDYKHRMFWREMYSVEEAEQLMTLISAAREYEIEFIYAI
 SPGLDITFSNPKEVSTLKRKLDQVSQFGCRSFALLFDDIDHNMCAADKEVSSFAHAQVSIITNEIYQY
 LGEPE TFLFCPTEYCGTFYCYPNVSQSPYLRTVGEKLLPGIEVLWTGPKVVSKEIPVESIEEVSKI
 IKRAPVIWDNIHANDYDQKRLFLGPYKGRSTELIPRLKGYLTNPNCFEFANYVVIHTLATWYKSNM
 NGVRKDDVMTDSEDSTVSIQIKLENEGSDEDIETDVLVYSPQALKLALTEWLQEFVPHQYSSRQV
 AHSAGAKASVVDGTPLVAA PSLNATTVVTTYQEPIMSQGAALSGEPTTLTKEEEKQPDEEPM
 DMVVEKQEETHDKNDNQILSEIVEA KMAEELKPMDDKESIAESKSPMSMQEDCISDIAPMQT
 DEQTNKEQFVPGPNEKPLYTAEPVTLEDLQL LADLFYLPYEHGPKGAQMLREFQWLRANSSV
 VSVNCKGKDKSEKIEEWSRAAKFEEMCGLVMGMFTRL SN CANRTILYDMYSYVWDIKS
 IMSMVKSFVQWLGCRSHSSAQFLIGDQEPWAFRGGLAGEFQRLLPIDGAND LFFQPPPLTPT
 SKVYTI RPYFPKDEASVYKICREMYDDGVLFPQSQPDIGDKLVGGLLSLSDYCFVL
 EDEDGICGYALGTVDPFPIKCKISWIPFMQEKYTKPNGDKELSEA EKIMLSFHEEQEVL
 PETFLANF PSLIKMDIHKKVTDPSVAKSMMACLLSSLKANGSRGAFCEVRPDDKRILEFYSKL
 GCFEIAKMEGFPKDVV ILGRSL

TRTRPLEQKLISEEDLAANDILDYKDDDDKV

Restriction Sites:

SgfI-MluI

Cloning Scheme:

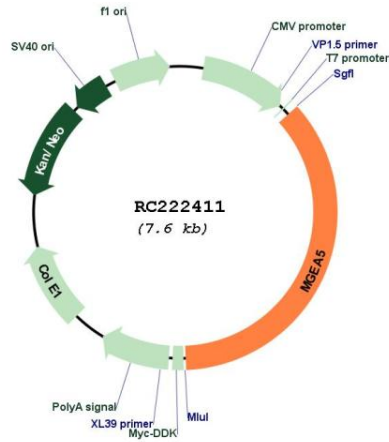


ACCN: NM_012215

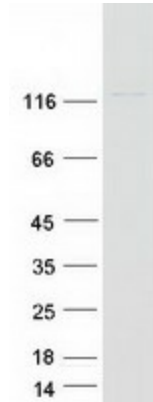
ORF Size: 2748 bp

OTI Disclaimer:	<p>Due to the inherent nature of this plasmid, standard methods to replicate additional amounts of DNA in E. coli are highly likely to result in mutations and/or rearrangements. Therefore, OriGene does not guarantee the capability to replicate this plasmid DNA. Additional amounts of DNA can be purchased from OriGene with batch-specific, full-sequence verification at a reduced cost. Please contact our customer care team at custsupport@origene.com or by calling 301.340.3188 option 3 for pricing and delivery.</p> <p>The molecular sequence of this clone aligns with the gene accession number as a point of reference only. However, individual transcript sequences of the same gene can differ through naturally occurring variations (e.g. polymorphisms), each with its own valid existence. This clone is substantially in agreement with the reference, but a complete review of all prevailing variants is recommended prior to use. More info</p>
OTI Annotation:	This clone was engineered to express the complete ORF with an expression tag. Expression varies depending on the nature of the gene.
Components:	The ORF clone is ion-exchange column purified and shipped in a 2D barcoded Matrix tube containing 10ug of transfection-ready, dried plasmid DNA (reconstitute with 100 ul of water).
Reconstitution Method:	<ol style="list-style-type: none"> 1. Centrifuge at 5,000xg for 5min. 2. Carefully open the tube and add 100ul of sterile water to dissolve the DNA. 3. Close the tube and incubate for 10 minutes at room temperature. 4. Briefly vortex the tube and then do a quick spin (less than 5000xg) to concentrate the liquid at the bottom. 5. Store the suspended plasmid at -20°C. The DNA is stable for at least one year from date of shipping when stored at -20°C.
RefSeq:	NM_012215.5
RefSeq Size:	5220 bp
RefSeq ORF:	2751 bp
Locus ID:	10724
UniProt ID:	O60502
Cytogenetics:	10q24.32
MW:	102.9 kDa
Gene Summary:	The dynamic modification of cytoplasmic and nuclear proteins by O-linked N-acetylglucosamine (O-GlcNAc) addition and removal on serine and threonine residues is catalyzed by OGT (MIM 300255), which adds O-GlcNAc, and MGEA5, a glycosidase that removes O-GlcNAc modifications (Gao et al., 2001 [PubMed 11148210]).[supplied by OMIM, Mar 2008]

Product images:



Circular map for RC222411



Coomassie blue staining of purified OGA protein (Cat# [TP322411]). The protein was produced from HEK293T cells transfected with OGA cDNA clone (Cat# RC222411) using MegaTran 2.0 (Cat# [TT210002]).