

## Product datasheet for RC222407

### RNF13 (NM\_183381) Human Tagged ORF Clone

#### Product data:

Product Type:	Expression Plasmids
Product Name:	RNF13 (NM_183381) Human Tagged ORF Clone
Tag:	Myc-DDK
Symbol:	RNF13
Synonyms:	DEE73; EIEE73; RZF
Mammalian Cell Selection:	Neomycin
Vector:	pCMV6-Entry (PS100001)
E. coli Selection:	Kanamycin (25 ug/mL)
ORF Nucleotide Sequence:	>RC222407 representing NM_183381 Red=Cloning site Blue=ORF Green=Tags(s)

TTTTGTAATACGACTCACTATAGGGCGGCCGGAATTCGTCGACTGGATCCGGTACCGAGGAGATCTGCC  
GCC**CGATCGCC**

ATGCTGCTCTCCATAGGGATGCTCATGCTGTCAGCCACACAAGTCTACCCATCTTGACTGTCCAGCTCT  
TTGCATTCTTAAACCTACTGCCTGTAGAAGCAGACATTTAGCATATAACTTTGAAAATGCATCTCAGAC  
ATTTGATGACCTCCCTGCAAGATTTGGTTATAGACTTCCAGCTGAAGGTTTAAAGGGTTTTTGATTAAC  
TCAAAACCAGAGAATGCCTGTGAACCCATAGTGCCTCCACCAGTAAAAGACAATTCATCTGGCATTCA  
TCGTGTTAATTAGAAGACTTGATTGTAATTTTGATATAAAGGTTTTAAATGCACAGAGAGCAGGATACAA  
GGCAGCCATAGTTCACAATGTTGATTCTGATGACCTCATTAGCATGGGATCCAACGACATTGAGGTA  
AAGAAAATTGACATTCCATCTGTCTTTATTGGTGAATCATCAGCTAATTCTCTGAAAGATGAATTCACAT  
ATGAAAAAGGGGGCCACCTTATCTTAGTTCAGAAATTTAGTCTTCTTGGAACTACTACCTAATCCCTT  
CCTTATCATAGTGGGCATCTGTCTCATCTTGATAGTCAATTTTATGATCACAATTTGTCCAGGATAGA  
CATAGAGCTAGAAGAAACAGACTTCGTAAGATCAACTTAAAGAACTTCTGTACATAAATCAAGAAAG  
GAGATGAGTATGATGTATGTGCCATTTGTTGGATGAGTATGAAGATGGAGACAACTCAGAATCCTTCC  
CTGTTCCCATGCTTATCATTGCAAGTGTGTAGACCCTTGGCTAACTAAAACAAAAAACCTGTCCAGTG  
TGCAAGCAAAAAGTTGTTCTTCTCAAGGCGATTTCAGACTGACACAGACAGTAGTCAAGAAGAAAATG  
AAGTGACAGAACATACCCCTTACTGAGACCTTTAGCTTCTGTGAGTCCAGTCAATTTGGGGCTTTATC  
GGAATCCCGCTCACATCAGAATGACAGAATCTTCAGACTATGAGGAAGACGACAAATGAAGATACTGAC  
AGTAGTATGACAGAAAATGAAATTAATGAACATGATGTCGTGGTCCAGTTCAGCCTAATGGTGAACGGG  
ATTACAACATAGCAAACTACTGTT

**ACGCGT**ACGCGGCCGCTCGAGCAGAACTCATCTCAGAAGAGGATCTGGCAGCAATGATATCCTGGATT  
ACAAGGATGACGACGATAAGGTTTAA



[View online >](#)

**Protein Sequence:** >RC222407 representing NM\_183381  
Red=Cloning site Green=Tags(s)

MLLSIGMLMLSATQVYITLVQLFAFLNLLPVEADILAYNFENASQTFDDLPARFGYRLPAEGLKGFLLN  
 SKPENACEPIVPPPVKDNSSGTFIVLIRRLDCNFDIKVLNAQRAGYKAAIVHNVSDDLISMGSNIDIEVL  
 KKIDIPSVFIGESSANSLKDEFTYEKGGHLILVPEFSLPLEYYLIPFLIIVGICLILIVIFMITKVFQDR  
 HRARRNRLRKDQLKPLVHKFKKGDEYDCAICLDEYEDGDKLRILPCSHAYHCKCVDPWLTKTTKTCPV  
 CKQKVVPSSQGDSDSDTSSQEENEVTEHTPLLRPLASVSAQSFALSESRSHQNMTESSDYEDDNDTDT  
 SSDAENEINEHDVVVQLQPNGERDYNIAINTV

TRTRPLEQKLISEEDLAANDILDYKDDDDKV

**Chromatograms:** [https://cdn.origene.com/chromatograms/mk6106\\_a01.zip](https://cdn.origene.com/chromatograms/mk6106_a01.zip)

**Restriction Sites:** SgfI-MluI

**Cloning Scheme:**



**ACCN:** NM\_183381

**ORF Size:** 1143 bp

**OTI Disclaimer:** The molecular sequence of this clone aligns with the gene accession number as a point of reference only. However, individual transcript sequences of the same gene can differ through naturally occurring variations (e.g. polymorphisms), each with its own valid existence. This clone is substantially in agreement with the reference, but a complete review of all prevailing variants is recommended prior to use. [More info](#)

**OTI Annotation:** This clone was engineered to express the complete ORF with an expression tag. Expression varies depending on the nature of the gene.

**Components:** The ORF clone is ion-exchange column purified and shipped in a 2D barcoded Matrix tube containing 10ug of transfection-ready, dried plasmid DNA (reconstitute with 100 ul of water).

**Reconstitution Method:**

1. Centrifuge at 5,000xg for 5min.
2. Carefully open the tube and add 100ul of sterile water to dissolve the DNA.
3. Close the tube and incubate for 10 minutes at room temperature.
4. Briefly vortex the tube and then do a quick spin (less than 5000xg) to concentrate the liquid at the bottom.
5. Store the suspended plasmid at -20°C. The DNA is stable for at least one year from date of shipping when stored at -20°C.

**RefSeq:** [NM\\_183381.1](#), [NP\\_899237.1](#)

**RefSeq Size:** 2854 bp

**RefSeq ORF:** 1146 bp

**Locus ID:** 11342

**UniProt ID:** [O43567](#)

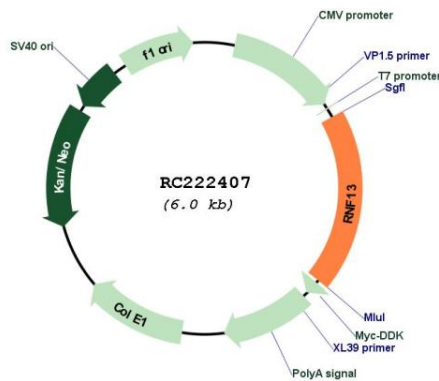
**Cytogenetics:** 3q25.1

**Protein Families:** Druggable Genome, Protease, Transmembrane

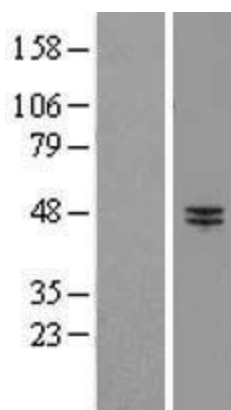
**MW:** 42.6 kDa

**Gene Summary:** The protein encoded by this gene contains a RING zinc finger, a motif known to be involved in protein-protein interactions. The specific function of this gene has not yet been determined. Alternatively spliced transcript variants that encode the same protein have been reported. A pseudogene, which is also located on chromosome 3, has been defined for this gene. [provided by RefSeq, Jul 2008]

### Product images:



Circular map for RC222407



Western blot validation of overexpression lysate (Cat# [LY405260]) using anti-DDK antibody (Cat# [TA50011-100]). Left: Cell lysates from untransfected HEK293T cells; Right: Cell lysates from HEK293T cells transfected with RC222407 using transfection reagent MegaTran 2.0 (Cat# [TT210002]).