

Product datasheet for **RC222399L2V**

DLL1 (NM_005618) Human Tagged ORF Clone Lentiviral Particle

Product data:

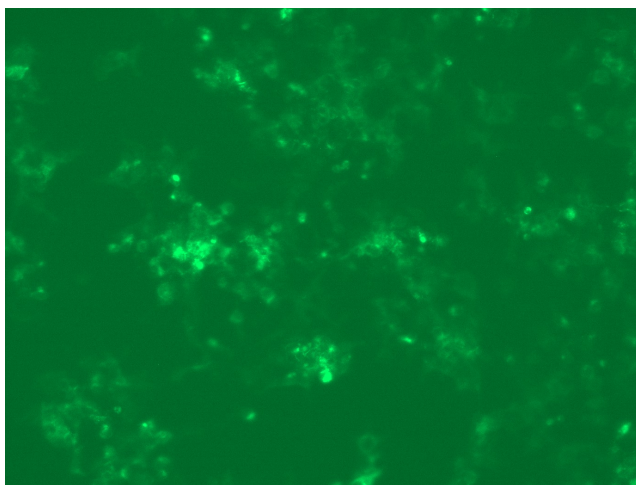
Product Type:	Lentiviral Particles
Product Name:	DLL1 (NM_005618) Human Tagged ORF Clone Lentiviral Particle
Symbol:	DLL1
Synonyms:	Delta; DELTA1; DL1; NEDBAS
Mammalian Cell Selection:	None
Vector:	pLenti-C-mGFP (PS100071)
Tag:	mGFP
ACCN:	NM_005618
ORF Size:	2169 bp
ORF Nucleotide Sequence:	The ORF insert of this clone is exactly the same as(RC222399).
OTI Disclaimer:	The molecular sequence of this clone aligns with the gene accession number as a point of reference only. However, individual transcript sequences of the same gene can differ through naturally occurring variations (e.g. polymorphisms), each with its own valid existence. This clone is substantially in agreement with the reference, but a complete review of all prevailing variants is recommended prior to use. More info
OTI Annotation:	This clone was engineered to express the complete ORF with an expression tag. Expression varies depending on the nature of the gene.
RefSeq:	NM_005618.3
RefSeq Size:	3366 bp
RefSeq ORF:	2172 bp
Locus ID:	28514
UniProt ID:	O00548
Cytogenetics:	6q27
Domains:	DSL, EGF_CA, EGF, EGF



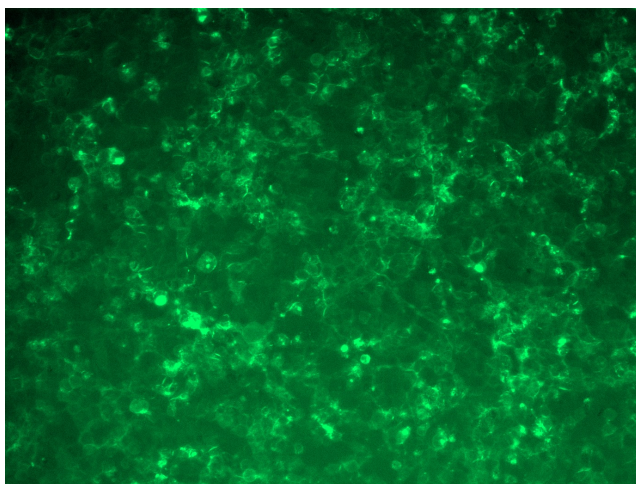
[View online »](#)

Protein Families:	Adult stem cells, Cancer stem cells, ES Cell Differentiation/IPS, Stem cell relevant signaling - DSL/Notch pathway, Transmembrane
Protein Pathways:	Notch signaling pathway
MW:	77.9 kDa
Gene Summary:	DLL1 is a human homolog of the Notch Delta ligand and is a member of the delta/serrate/jagged family. It plays a role in mediating cell fate decisions during hematopoiesis. It may play a role in cell-to-cell communication. [provided by RefSeq, Jul 2008]

Product images:



[RC222399L2] was used to prepare Lentiviral particles using [TR30037] packaging kit. HEK293T cells were transduced with RC222399L2V particle to overexpress human DLL1-mGFP fusion protein.



[RC222399L2] was used to prepare Lentiviral particles using [TR30037] packaging kit. HEK293T cells were transduced with RC222399L2V particle to overexpress human DLL1-mGFP fusion protein.