

Product datasheet for **RC222393**

PTGER3 (NM_000957) Human Tagged ORF Clone

Product data:

Product Type:	Expression Plasmids
Product Name:	PTGER3 (NM_000957) Human Tagged ORF Clone
Tag:	Myc-DDK
Symbol:	PTGER3
Synonyms:	EP3; EP3-I; EP3-II; EP3-III; EP3-IV; EP3e; MGC27302; MGC141828; MGC141829
Mammalian Cell Selection:	Neomycin
Vector:	pCMV6-Entry (PS100001)
E. coli Selection:	Kanamycin (25 ug/mL)



[View online »](#)

ORF Nucleotide Sequence:

>RC222393 representing NM_000957
 Red=Cloning site Blue=ORF Green=Tags(s)

TTTTGTAATACGACTCACTATAGGGCGGCCGGGAATTCGTCGACTGGATCCGGTACCGAGGAGATCTGCC
 GCC**CGGATCGCC**

ATGAAGGAGACCCGGGGTACGGAGGGGATGCCCCCTTCTGCACCCGCCTCAACCACTCCTACACAGGCA
 TGTGGGCGCCGAGCGTTCCGCCGAGGCGGGGCAACCTCACGCGCCCTCCAGGGTCTGGCGAGGATTG
 CGGATCCGGTGTCCGTGGCCTTCCCGATCACCATGCTGCTCACTGGTTTCGTGGGCAACGCACTGGCCATG
 CTGCTCGTGTGCGCAGCTACCGGCGCCGGGAGAGCAAGCGCAAGAAGTCCTTCTGCTGTGCATCGGCT
 GGCTGGCGCTACCGACCTGGTCGGGCAGTCTTACCACCCCGGTCGTCATCGTCGTGTACCTGTCCAA
 GCAGCGTTGGGAGCACATCGACCCGTCGGGGCGGCTCTGCACCTTTTTCGGGCTGACCATGACTGTTTTT
 GGGCTCTCCTCGTTGTCATCGCCAGCGCCATGGCCGTCGAGCGGGCGCTGGCCATCAGGGCGCCGCACT
 GGTATGCGAGCCACATGAAGACGCGTGCACCCGCGTGTGCTGCTCGGCGTGTGGCTGGCCGTGCTCGC
 CTTCCGCTGCTGCCGGTGTGGCGTGGGCCAGTACCCGTCAGTGGCCCGGGACGTGGTGTTCATC
 AGCACCCGGGCGAGGGGCAACGGGACTAGCTCTTCGCATAACTGGGGCAACCTTTTCTTCGCCTCTGCCT
 TTGCCTTCTGGGGCTCTTGGCGCTGACAGTACCTTTTTCTGCAACCTGGCCACCATTAAAGCCCTGGT
 GTCCCGCTGCCGGGCAAGGCCACGGCATCTCAGTCCAGTGGCCAGTGGGGCCGCATCACGACCGAGACG
 GCCATTAGCTTATGGGATCATGTGCGTGTGTGGTCTGCTGGTCTCCGCTCTGATAATGATGTTGA
 AAATGATCTTCAATCAGACATCAGTTGAGCACTGCAAGACACACCGGAGAAGCAGAAAGAATGCAACTT
 CTTCTTAATAGCTGTTCCGCTGGCTTCACTGAACCAGATCTTGGATCCTTGGGTTTACCTGCTGTTAAGA
 AAGATCCTTCTCGAAAGTTTTGCCAGATGAGAAAAAGAAGACTCAGAGAGCAAGCTCCTCTTCCCA
 CCTCTACTGTGATTGATCCTTCAAGTTCTGTGCTCAGCCCTCCGTTGGTTCTTGGATTTGCTTTCC
 CGCCATGTCTTATCACATCCAACTTCCACTAACACTTGCAGGCTTCAAACCTCTTAGAGAACCCTGC
 AGTGTCAGCTAAGC

AG**CGGACCG**ACGCGTACGCGCCGCTCGAGCAGAAACTCATCTCAGAAGAGGATCTGGCAGCAAATGATATCC
 TGGATTACAAGGATGACGACGATAAGGTTTAA

Protein Sequence:

>RC222393 representing NM_000957
 Red=Cloning site Green=Tags(s)

MKETRGYGGDAPFCTRLNHSYTMWAPERSAARGNLTRPPGSGEDCGSVSVAFPITMLLTGFVGNALAM
 LLVSRSYRRRESKRKKSFLLCIGWLALDVLVQLLTTPVVIVVYLSKQRWEHIDPSGRLCTFFGLTMTVF
 GLSSLFIASAMAVERALAIRAPHWYASHMKTRATRAVLLGVWLAVLAFALLPVLGVGYTVQWPGTWCFI
 STGRGGNGTSSSHNWGNLFFASAFALGLLALTVTFSCNLATIKALVSRCAKATASQSSAQWGRITTE
 AIQLMGIMCVLSVCWSPLLIMMLKMIFNQTSVEHCKTHTEKQKECNFFLIAVRLASLNQILDWPVYLLLR
 KILLRKFQMRKRRLEQAPLLPTSTVIDPSRFCAQPFWFLLDLSFPAMSSSHPLPLTLASFKLLREPC
 SVQLS

SGP**TRTRRLEQKLI**SEEDLAANDILDYKDDDDKV

Restriction Sites:

Sgfl-RsrII

Cloning Scheme:


ACCN: NM_000957

ORF Size: 1275 bp

OTI Disclaimer: Due to the inherent nature of this plasmid, standard methods to replicate additional amounts of DNA in E. coli are highly likely to result in mutations and/or rearrangements. Therefore, OriGene does not guarantee the capability to replicate this plasmid DNA. Additional amounts of DNA can be purchased from OriGene with batch-specific, full-sequence verification at a reduced cost. Please contact our customer care team at custsupport@origene.com or by calling 301.340.3188 option 3 for pricing and delivery.

The molecular sequence of this clone aligns with the gene accession number as a point of reference only. However, individual transcript sequences of the same gene can differ through naturally occurring variations (e.g. polymorphisms), each with its own valid existence. This clone is substantially in agreement with the reference, but a complete review of all prevailing variants is recommended prior to use. [More info](#)

OTI Annotation: This clone was engineered to express the complete ORF with an expression tag. Expression varies depending on the nature of the gene.

Components: The ORF clone is ion-exchange column purified and shipped in a 2D barcoded Matrix tube containing 10ug of transfection-ready, dried plasmid DNA (reconstitute with 100 ul of water).

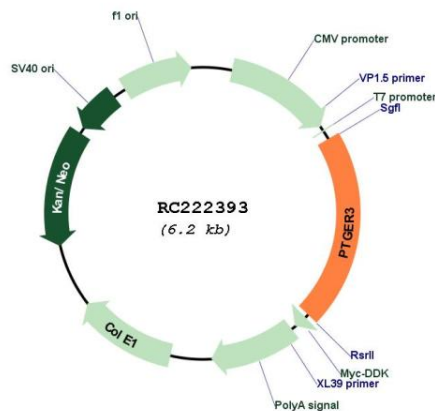
- Reconstitution Method:**
1. Centrifuge at 5,000xg for 5min.
 2. Carefully open the tube and add 100ul of sterile water to dissolve the DNA.
 3. Close the tube and incubate for 10 minutes at room temperature.
 4. Briefly vortex the tube and then do a quick spin (less than 5000xg) to concentrate the liquid at the bottom.
 5. Store the suspended plasmid at -20°C. The DNA is stable for at least one year from date of shipping when stored at -20°C.

RefSeq: [NM_000957.2](#), [NP_000948.2](#)

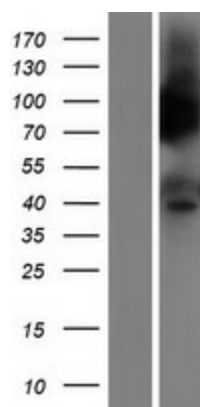
RefSeq Size: 2082 bp
RefSeq ORF: 1277 bp
Locus ID: 5733
Cytogenetics: 1p31.1
Domains: 7tm_1
Protein Families: Druggable Genome, GPCR, Transcription Factors, Transmembrane
Protein Pathways: Calcium signaling pathway, Neuroactive ligand-receptor interaction
MW: 47.1 kDa

Gene Summary: The protein encoded by this gene is a member of the G-protein coupled receptor family. This protein is one of four receptors identified for prostaglandin E2 (PGE2). This receptor may have many biological functions, which involve digestion, nervous system, kidney reabsorption, and uterine contraction activities. Studies of the mouse counterpart suggest that this receptor may also mediate adrenocorticotrophic hormone response as well as fever generation in response to exogenous and endogenous stimuli. Multiple transcript variants encoding different isoforms have been found for this gene. [provided by RefSeq, Aug 2009]

Product images:



Circular map for RC222393



Western blot validation of overexpression lysate (Cat# [LY424432]) using anti-DDK antibody (Cat# [TA50011-100]). Left: Cell lysates from untransfected HEK293T cells; Right: Cell lysates from HEK293T cells transfected with RC222393 using transfection reagent MegaTran 2.0 (Cat# [TT210002]).