

Product datasheet for **RC222390**

AGAP6 (NM_001077665) Human Tagged ORF Clone

Product data:

Product Type:	Expression Plasmids
Product Name:	AGAP6 (NM_001077665) Human Tagged ORF Clone
Tag:	Myc-DDK
Symbol:	AGAP6
Synonyms:	AGAP-6; CTGLF3
Mammalian Cell Selection:	Neomycin
Vector:	pCMV6-Entry (PS100001)
E. coli Selection:	Kanamycin (25 ug/mL)



[View online »](#)

ORF Nucleotide
Sequence:

>RC222390 representing NM_001077665
Red=Cloning site Blue=ORF Green=Tags(s)

TTTTGTAATACGACTCACTATAGGGCGGCCGGAATTCGTGACTGGATCCGGTACCGAGGAGATCTGCC
GCCGCGATCGCC

ATGGGGAACATACTGACCTGTCGTGTGCACCCTAGCGTCAGCCTCGAGTTTGACCAGCAGCAGGGGTCGG
TGTGTCCCTCTGAATCTGAGACCTATGAGGCAGGAGCTAGGGACAGGATGGCAGGAGCGCCCATGGCTGC
TGCTGTACAGCCTGCTGAGGTGACTGTTGAAGTTGGTGAGGACCTCCACATGCACCACGTTTCGTGACCGG
GAGATGCCTGAAGCTTTGGAGTTTAACTTTCTGCCAATCCAGAGTCAAGCACAATATCCAGAGGAACT
CTCAAACAGAAGCTTTGGAGTTTAACTTTCTGCCAATCCAGAGGCAAGCACAATATCCAGAGGAACTC
TCAAACAGATGTTGTAGAAATAAGAAGAAGCAACTGTACAAACCATGTATCTGCTGTGCGTTTCAGTCAA
CAATACAGCTTGTGTTGACAATATTCCTTGATGACAGCACAGCCATCCAGCATTATCTTACAATGACAA
TAATATCTGTGACCTTGGAGATACCTCATCATATCACACAAAGAGATGCAGATAGAAGTTTGAGCATAACC
TGATGAACAGTTACACTATTTGCGGTTTCCACCGTGCACATTATGAAGAAAAGAAATGGAGGTGGGAGT
TTAAATAACTATTCCTCCTCCATTCCATCGACTCCCAGCACAGCCAGGAGGACCCTCAGTTCAGTGTTTC
CTCCCCTGCAACACACCCACGCCGTTTGAAGCGGTCATGCGCTGGTCCAACCTGTTTACATCTGA
GAAAGGGAGTGACCCAGACAAAGAGAGGAAAGCCCGGAGAATCATGCTGACACCATCGGGAGCGGTAGA
GCCATCCCATTAACAGGGCATGCTCTTAAAGCGAAGTGGGAAATGGCTGAAGACATGGAAAAAGAAAT
ACGTCACCCTGTGTTCCAATGGCATGCTCACCTATTATTCAAGCTTAGGTGATTATGAAGAATATTCA
TAAAAAGAGATTGACCTTCAGACATCTACCATCAAAGTCCCAGGAAAGTGGCCATCCCTAGCCACATCG
GCCTGCACACCCATCTCCAGCTCTAAAAGCAATGGCCTATCCAAGGACATGGACACCGGGCTGGGTGACT
CCATATGCTTCAGCCCCAGTATCTCCAGCACACCAGCCCCAAGCTCAACCCGCCCTCTCCTCATGC
TAATAAAAAGAAACACCTAAAGAAGAAAAGCACCAACAACCTTATGATTGTGTCTGCCACTGGCCAAACG
TGGCACTTTGAAGCCACGACGTATGAGGAGCGGGATGCCTGGGTCCAAGCCATCCAGAGCCAGATCCTGG
CCAGCCTGCAGTCATGCGAGAGCAGTAAAAGCAAGTCCCAGCTGACCAGCCAGAGCGAGGCCATGGCCCT
GCAGTCGATCCAAAACATGCGTGGGAACGCCACTGTGTGGACTGTGAGACCCAGAATCCTAAGTGGGCC
AGTTTGAAGTGGGAGTCTCATGTGATTGAATGCTCAGGTATCCACCGCAGTCTTGGCCCCACCTTT
CCCGTGTGCGATCTCTGGAGCTGGATGACTGGCCAGTTGAGCTCAGGAAGTTATGTCATCTATTGTCAA
TGACCTAGCCAACAGCATCTGGGAAGGGAGCAGCCAGGGGAGACAAAACCTCAGAAAAGTCCACGAGG
GAAGAGAAGGAACGGTGGATCCGTTCAAATATGAGGAGAAGCTTTTCTGGCCCCACTACCTGCACTG
AGCTGTCCCTGGGCCAGCAGCTGCTGCGGGCCACCGCTGATGAGGACCTGCAGACAGCCATCCTGCTGCT
GGCACATGGCTCCTGTGAGGAGGTGAACGAGACCTGTGGGGAGGGAGACGGCTGCACGGCGCTCCATCTG
GCCTGCCCAAGGGGAATGTGGTCTGGCGCAGCTCCTGATCTGGTACGGGGTGGACGTCATGGCCCGAG
ATGCCACGGGAACAGCGCTGACCTACGCCCGGAGGCTCCAGCCAGGAGTGATCAACGTGCTTCT
GCAGTACGGCTGCCCGACGAGTGTGTG

ACGCGTACGCGGCCGCTCGAGCAGAACTCATCTCAGAAGAGGATCTGGCAGCAATGATATCCTGGATT
ACAAGGATGACGACGATAAGGTTTAA

Protein Sequence: >RC222390 representing NM_001077665
Red=Cloning site Green=Tags(s)

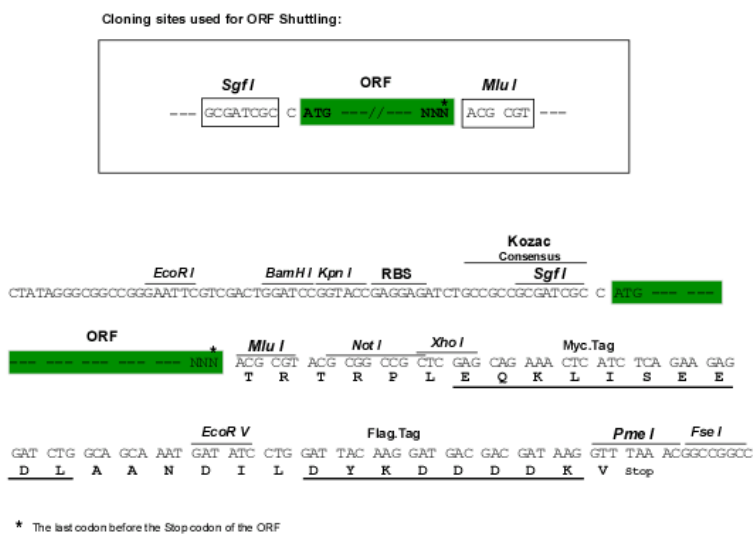
MGNILTCRVHPSVSLFDQQQGSVCPSESETYEAGARDRMAGAPMAAAVQPAEVTVEVGEDLHMHVDR
 EMPEALEFNLSANPESSITFQRNSQTEALEFNPSANPEASTIFQRNSQTDVVEIRRSNCTNHVSAVRF
 SQYSLCSTIFLDDSTAIQHYLTMTIISVLEIPHHITQRDADRTLIPDEQLHSFAVSTVHIMKKRNGGS
 LNNYSSSIPSTPSTSQEDPQFSVPPTANTPTPVCKRSMRWSNLFTSEKGSDDPKERKAPENHADI
 GSGRAIPIKQGMLLKRSGLKTKWKKYVTLCSNGLTYSSLDYMKNIHKKEIDLQTSTIKVPGKWP
 SLATSACTPISSSKSNGLSKDMDTGLGDSICFSPSISSTSPKLNPPSPHANKKKHLKKKSTNFMIV
 SATGQTWHFEATTEERDAWVQAIQSQILASLQSCSSKSKSQLTSQSEAMALQSIQNMGRNAH
 CVDCEQNPKWA SLNLGVLMCIECSGIHRSLGPHLSRVRSLELDDWPVELRKVMSSIVNDLAN
 SIWEGSSQGGQTKPSEKSTR EEKERWIRSKYEEKLFLAPLPCTELSLGQQLLRATADELDQTA
 ILLL AHGSCEEVNETCGEGDGCTALHLACRKGNVVLAQLLIWYGVDMARDAHGNTALTYARQ
 ASSQECINVLLQYGCPDECV

TRTRPLEQKLISEEDLAANDILDYKDDDDKV

Chromatograms: https://cdn.origene.com/chromatograms/mk8041_b01.zip

Restriction Sites: SgfI-MluI

Cloning Scheme:



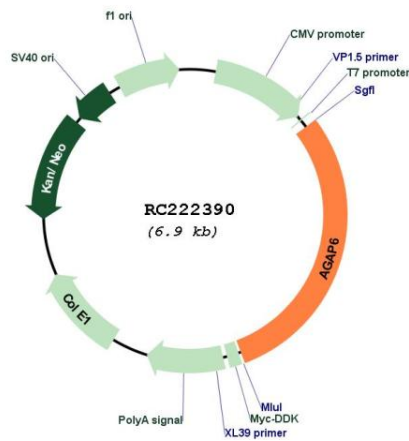
ACCN: NM_001077665

ORF Size: 2058 bp

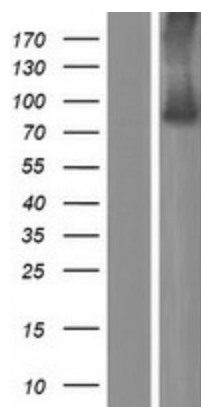
OTI Disclaimer: The molecular sequence of this clone aligns with the gene accession number as a point of reference only. However, individual transcript sequences of the same gene can differ through naturally occurring variations (e.g. polymorphisms), each with its own valid existence. This clone is substantially in agreement with the reference, but a complete review of all prevailing variants is recommended prior to use. [More info](#)

OTI Annotation: This clone was engineered to express the complete ORF with an expression tag. Expression varies depending on the nature of the gene.

Components:	The ORF clone is ion-exchange column purified and shipped in a 2D barcoded Matrix tube containing 10ug of transfection-ready, dried plasmid DNA (reconstitute with 100 ul of water).
Reconstitution Method:	<ol style="list-style-type: none"> 1. Centrifuge at 5,000xg for 5min. 2. Carefully open the tube and add 100ul of sterile water to dissolve the DNA. 3. Close the tube and incubate for 10 minutes at room temperature. 4. Briefly vortex the tube and then do a quick spin (less than 5000xg) to concentrate the liquid at the bottom. 5. Store the suspended plasmid at -20°C. The DNA is stable for at least one year from date of shipping when stored at -20°C.
RefSeq:	<u>NM_001077665.2</u> , <u>NP_001071133.2</u>
RefSeq Size:	2772 bp
RefSeq ORF:	2061 bp
Locus ID:	414189
UniProt ID:	<u>Q5VW22</u>
Cytogenetics:	10q11.23
MW:	75.5 kDa
Gene Summary:	Putative GTPase-activating protein.[UniProtKB/Swiss-Prot Function]

Product images:


Circular map for RC222390



Western blot validation of overexpression lysate (Cat# [LY421474]) using anti-DDK antibody (Cat# [TA50011-100]). Left: Cell lysates from untransfected HEK293T cells; Right: Cell lysates from HEK293T cells transfected with RC222390 using transfection reagent MegaTran 2.0 (Cat# [TT210002]).