

## Product datasheet for RC222387

### MEIS2 (NM\_170674) Human Tagged ORF Clone

#### Product data:

**Product Type:** Expression Plasmids  
**Product Name:** MEIS2 (NM\_170674) Human Tagged ORF Clone  
**Tag:** Myc-DDK  
**Symbol:** MEIS2  
**Synonyms:** CPCMR; HsT18361; MRG1  
**Mammalian Cell Selection:** Neomycin  
**Vector:** pCMV6-Entry (PS100001)  
**E. coli Selection:** Kanamycin (25 ug/mL)  
**ORF Nucleotide Sequence:** >RC222387 representing NM\_170674  
 Red=Cloning site Blue=ORF Green=Tags(s)

TTTTGTAATACGACTCACTATAGGGCGGCCGGAATTCGTCGACTGGATCCGGTACCGAGGAGATCTGCC  
 GCC**CGATCGCC**

ATGGCGCAAAGGTACGATGAGCTGCCCATACGGCGGGATGGACGGAGTAGGGGTTCCCGCTTCCATGT  
 ACGGAGACCTCACGCGCCGCGCCGATCCCCCGTTACCACCTGAACCACGGGCCCGCTCCACGC  
 CACACAGCACTACGGCGCGCACGCCCGCACCCCAATGTCATGCCGGCCAGTATGGGATCCGCTGTCAAC  
 GACGCCTGAAGCGGGACAAGGACGCGATCTATGGCACCCGTTGTTTCTCTGTAGCTCTGGTCTTTG  
 AGAAGTGCAGCTGGCGACCTGCACTCCCCGGAACTGGAGTGGCTGGCGGAGACGTCTGCTCCTCCGA  
 CTCTTCAACGAGGACATCGCGGTCTTCGCCAAGCAGGTTTCGCGCGAAAAGCCACTTTTTCTCAAA  
 CCAGAGCTGGACAATTTGATGATACAAGCAATACAAGTACTAAGGTTTCATCTTTTGAGTTAGAAAAGG  
 TCCACGAACTGTGCGATAACTTCTGCCACCGATACATTAGCTGTTTGAAGGGGAAAATGCCATCGACCT  
 CGTCATTGATGAAAGAGACGGCAGCTCCAAGTCAGATCATGAAGAACTTTCAGGCTCCTCCACAAATCTC  
 GCTGACCATAACCCTTCTTGGCGAGACCAGATGATGCAACCTCAACCCACTCAGCAGGCACCCAG  
 GGCCCTCCAGTGGGGCCATGCTTCCAGAGCGGAGACAACAGCAGTGAAGCAAGGGGATGGTTTAGACAA  
 CAGTGTAGCTTACCTGGTACAGGTGACGATGATGATCCGGATAAGGACAAAAACGCCAGAAGAAAAGA  
 GGCATTTTCCCCAAAGTAGCAACAAATATCATGAGAGCATGGCTTCCAGCATCTCACATCCGTACC  
 CTCCGAAGAGCAGAAGAACAGTTAGCGCAAGACACAGGACTTACAATTCTCCAAGTAAACAACCTGGTT  
 TATTAATGCCAGAAGAAGATAGTACAGCCATGATTGACCAGTCAAATCGAGCAGTGAGCCAAGGAGCA  
 GCATATAGTCCAGAGGTCAGCCATGGGGAGCTTTGTGTTGGATGGTCAGCAACACATGGGGATCCGGC  
 CTGCAAGACCTATGAGTGAATGGGCATGAATATGGGCATGGATGGGCAATGGCACTACATG

**ACGCGT**ACGGCGCCGCTCGAGCAGAACTCATCTCAGAAGAGGATCTGGCAGCAATGATATCCTGGATT  
 ACAAGGATGACGACGATAAGGTTTAA



[View online »](#)

**Protein Sequence:** >RC222387 representing NM\_170674  
Red=Cloning site Green=Tags(s)

MAQRYDELPHYGGMDGVGPASMYGDPHAPRPIPPVHHLNHGPPPLHATQHYGAHAPHPNVMPASMGSAVN  
 DALKRDKDAIYGHPLFPLLALVFEKCELATCTPREPGVAGGDVCSDFNEDIAVFAKQVRAEKPLFSSN  
 PELDNLMIQAIQVLRFHLLLELEKVELCDNFCHRYISCLKGKMPIDLVIDERDGSKSDHEELSGSSTNL  
 ADHNPSWRDHDATSTHSAGTPGPSSGGHASQSGDNSSEQDGLDNSVASPGTGDDDDPKDKKRQKKR  
 GIFPKVATNIMRAWLFQHLTHYPSEEQKQLAQDTGLTILQVNNWFINARRRIVQPMIDQSNRAVSQGA  
 AYSPEGQPMGSFVLDGQQHMGIRPAGPMSGMNMGMGMDGQWHYM

TRTRPLEQKLISEEDLAANDILDYKDDDDKV

**Chromatograms:** [https://cdn.origene.com/chromatograms/mk8056\\_h07.zip](https://cdn.origene.com/chromatograms/mk8056_h07.zip)

**Restriction Sites:** SgfI-MluI

**Cloning Scheme:**



\* The last codon before the Stop codon of the ORF

**ACCN:** NM\_170674

**ORF Size:** 1182 bp

**OTI Disclaimer:** The molecular sequence of this clone aligns with the gene accession number as a point of reference only. However, individual transcript sequences of the same gene can differ through naturally occurring variations (e.g. polymorphisms), each with its own valid existence. This clone is substantially in agreement with the reference, but a complete review of all prevailing variants is recommended prior to use. [More info](#)

**OTI Annotation:** This clone was engineered to express the complete ORF with an expression tag. Expression varies depending on the nature of the gene.

**Components:** The ORF clone is ion-exchange column purified and shipped in a 2D barcoded Matrix tube containing 10ug of transfection-ready, dried plasmid DNA (reconstitute with 100 ul of water).

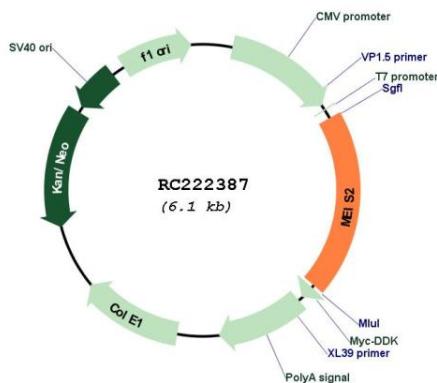
**Reconstitution Method:**

1. Centrifuge at 5,000xg for 5min.
2. Carefully open the tube and add 100ul of sterile water to dissolve the DNA.
3. Close the tube and incubate for 10 minutes at room temperature.
4. Briefly vortex the tube and then do a quick spin (less than 5000xg) to concentrate the liquid at the bottom.
5. Store the suspended plasmid at -20°C. The DNA is stable for at least one year from date of shipping when stored at -20°C.

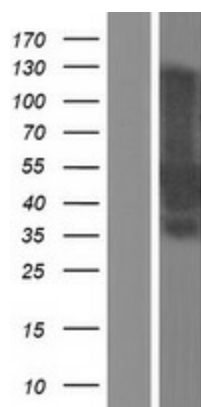
**RefSeq:** [NM\\_170674.5](#)  
**RefSeq Size:** 3700 bp  
**RefSeq ORF:** 1185 bp  
**Locus ID:** 4212  
**UniProt ID:** [O14770](#)  
**Cytogenetics:** 15q14  
**Domains:** homeobox  
**Protein Families:** Transcription Factors  
**MW:** 42.9 kDa

**Gene Summary:** This gene encodes a homeobox protein belonging to the TALE ('three amino acid loop extension') family of homeodomain-containing proteins. TALE homeobox proteins are highly conserved transcription regulators, and several members have been shown to be essential contributors to developmental programs. Multiple transcript variants encoding distinct isoforms have been described for this gene. [provided by RefSeq, Jul 2008]

**Product images:**



Circular map for RC222387



Western blot validation of overexpression lysate (Cat# [LY406902]) using anti-DDK antibody (Cat# [TA50011-100]). Left: Cell lysates from untransfected HEK293T cells; Right: Cell lysates from HEK293T cells transfected with RC222387 using transfection reagent MegaTran 2.0 (Cat# [TT210002]).