

## Product datasheet for RC222384

### NOS1 (NM\_000620) Human Tagged ORF Clone

#### Product data:

Product Type:	Expression Plasmids
Product Name:	NOS1 (NM_000620) Human Tagged ORF Clone
Tag:	Myc-DDK
Symbol:	NOS1
Synonyms:	bNOS; IHPS1; N-NOS; NC-NOS; nNOS; NOS
Mammalian Cell Selection:	Neomycin
Vector:	pCMV6-Entry (PS100001)
E. coli Selection:	Kanamycin (25 ug/mL)
ORF Nucleotide Sequence:	>RC222384 representing NM_000620 Red=Cloning site Blue=ORF Green=Tags(s)

TTTTGTAATACGACTCACTATAGGGCGGCCGGAATTCGTCGACTGGATCCGGTACCGAGGAGATCTGCC  
GCC**CGATCGCC**

ATGGAGGATCACATGTTTCGGTGTTCAGCAAATCCAGCCCAATGTCATTTCTGTTTCGTCCTTCAAGCGCA  
AAGTTGGGGCCCTGGGATTTCTGGTGAAGGAGCGGGTCAGTAAGCCGCCCGTGATCATCTCTGACCTGAT  
TCGTGGGGCGCCGAGAGCAGAGTGGCCATCCAGGCCGAGACATCATTCTTGGGTCAACGGCCGG  
CCCTTGGTGGACCTGAGCTATGACAGCGCCCTGGAGTACTCAGAGGCATTGCCTCTGAGACCCACGTGG  
TCCTCATTCTGAGGGCCCTGAAGGTTTACCACGCACCTGGAGACCACCTTTACAGGTGATGGGACCCC  
CAAGACCATCCGGGTGACACAGCCCTGGGTCCCCACCAAAGCCGTGGATCTGTCCCACAGCCACCG  
GCCGGCAAAGAACAGCCCTGGCAGTGGATGGGGCCTCGGGTCCCAGGAATGGGCCTCAGCATGCCTACG  
ATGATGGGCAGGAGGCTGGCTCACTCCCCATGCCAACGGCCTGGCCCCAGGCCCCAGGCCAGGACCC  
CGCGAAGAAAGCAACCAGAGTCAGCCTCCAAGGCAGAGGGGAGAACAATGAACTGCTCAAGGAGATAGAG  
CCTGTGCTGAGCCTTCTCACCAGTGGGAGCAGAGGGGTCAAGGGAGGGGCACCTGCCAAGGCAGAGATGA  
AAGATATGGGAATCCAGGTGGACAGAGATTTGGACGGCAAGTCACACAAACCTCTGCCCTCGGCGTGGA  
GAACGACCGAGTCTTCAATGACCTATGGGGGAAGGGCAATGTGCCTGTCGTCCTCAACAACCCATATTCA  
GAGAAGGAGCAGCCCCACCTCAGGAAAACAGTCCCCACAAAGATGGCAGCCCTCCAAGTGTCCAC  
GCTTCTCAAGGTCAAGAACTGGGAGACTGAGGTGGTTCTCACTGACACCCTCCACCTTAAGAGCACATT  
GGAAACGGGATGCACTGAGTACATCTGCATGGGCTCCATCATGCATCCTTCTCAGCATGCAAGGAGCCCT  
GAAGACGTCGACAAAAAGGACAGCTCTTCCCTCTCGCCAAAGAGTTTATTGATCAATACTATTCATCAA  
TAAAAGATTTGGCTCAAAGCCACATGGAAAGGCTGGAAGAGGTGAACAAAGAGATCGACACCACTAG  
CACTTACCAGCTCAAGGACACAGAGCTCATCTATGGGGCCAAGCAGCCTGGCGGAATGCCTCGCGCTGT  
GTGGGCAGGATCCAGTGGTCCAAGCTGCAGGTATTCGATGCCCGTGACTGCACCAGGCCACGGGATGT  
TCAACTACATCTGTAACCATGTCAAGTATGCCACCAACAAAGGGAACCTCAGGTCTGCCATCACCATATT  
CCCCAGAGGACAGACGGCAAGCAGACTTCCGAGTCTGGAATCCCAGCTCATCCGCTACGCTGGCTAC



[View online >](#)

AAGCAGCCTGACGGCTCCACCCTGGGGACCCAGCCAATGTGCAGTTCACAGAGATATGCATACAGCAGG  
GCTGAAACCGCCTAGAGGCCGCTTCGATGTCTGCCGCTCCTGCCTCAGGCCAACGGCAATGACCCCTGA  
GCTCTCCAGATTCTCCAGAGCTGGTGTGGAAGTTCATCAGGCACCCCAAGTTTGAGTGGTTCAAG  
GACCTGGGGCTGAAGTGGTACGGCTCCCGCCGTGTCCAACATGCTCCTAGAGATTGGCGGCTGGAGT  
TCAGCGCTGTCCCTCAGTGGTGGTACATGGGCACAGAGATTGGTGTCCGCGACTACTGTGACAACTC  
CCGCTACAATATCCTGGAGGAAGTGGCCAAGAAGATGAACTTAGACATGAGGAAGACGTCCTCCCTGTGG  
AAGGACAGGCGCTGGTGGAGATCAATATCGCGTTCTCTATAGCTTCCAGAGTGACAAAGTACCATTG  
TTGACCATCACTCCGCCACCGAGTCCTTCAATAAGCACATGGAGAATGAGTACCGCTGCCGGGGGGCTG  
CCCTGCCGACTGGGTGTGGATCGTGCCCCCATGTCCGGAAGCATCACCCCTGTGTTCCACCAGGAGATG  
CTCAACTACCGGCTCACCCCTCCTTCGAATACCAGCCTGATCCCTGGAACACGCATGTCTGAAAGGCA  
CCAACGGGACCCCAAAAGCGGCGAGCCATCGGCTTCAAGAAGCTAGCAGAAGCTGCAAGTTCTCGGC  
CAAGCTGATGGGGCAGGCTATGGCCAAGAGGGTAAAGCGACCATCCTCTATGCCACAGAGACAGGCAAA  
TCGCAAGCTTATGCCAAGACCTGTGTGAGATCTTCAAACACGCCTTTGATGCCAAGGTGATGTCCATGG  
AAGAATATGACATTGTGCACCTGGAACATGAAACTCTGGTCTTGTGGTACCAGCACCTTTGGCAATGG  
AGATCCCCTGAGAATGGGGAGAAATTCGGCTGTGCTTTGATGGAATGAGGCACCCCAACTCTGTGCAG  
GAAGAAAGGAAGAGCTACAAGGTCGATTCAACAGCGTCTCCTCCTACTCTGACTCCCAAAAATCATCAG  
GCGATGGGCCCGACCTCAGAGACAACTTGGAGTGTGGACCCCTGGCCAATGTGAGGTTCTCAGTTTT  
TGGCCTCGGCTCACGAGCATACCCTCACTTTTGCGCCCTTCGGACACGCTGTGGACACCCTCCTGGAAGAA  
CTGGGAGGGGAGAGGATCTTGAAGATGAGGGAAGGGATGAGCTCTGTGGCAGGAAGAGGCTTTCAGGA  
CCTGGGCCAAGAAGGTCTTCAAGGCAGCCTGTGATGTCTTCTGTGTGGGAGATGATGTCAACATTGAAAA  
GGCCAACAATTCCTCATCAGCAATGATCGCAGCTGGAAGAGAAACAAGTTCGCCTCACCTTTGTGGCC  
GAAGCTCCAGAACTCACACAAGGTCTATCCAATGTCCAAAAAGCGAGTCTCAGCTGCCCGGCTCCTTA  
GCGCTCAAAACCTCCAGAGCCCTAAATCCAGTCGGTCAACTATCTTCGTGCGTCTCCACACCAACGGGAG  
CCAGGAGCTGCAGTACCAGCCTGGGACCACTGGGTGTCTTCCCTGGCAACCACGAGGACCTCGTGAAT  
GCCTGATCGAGCGGCTGGAGGACGCGCCCTGTCAACCAGATGGTGAAGTGAAGTGTGGAGGAGC  
GGAACACGGCTTTAGGTGTATCAGTAAGTGGACAGACGAGCTCCGCCTCCCGCCCTGCACCATCTTCCA  
GGCCTTCAAGTACTACCTGGACATCACCACGCCACCAACGCCTCTGCAGCTGCAGCAGTTTGCCTCCCTA  
GCTACCAGCGAGAAGGAGAAGCAGCGTCTGCTGGTCTCAGCAAGGGTTTGCAGGAGTACGAGGAATGGA  
AATGGGGCAAGAACCCACCATCGTGGAGGTGCTGGAGGATTCCTATCCAGATGCCGGCCACCCCT  
GCTCCTGACCCAGCTGTCCCTGTGCAGCCCCGCTACTATCCATCAGCTCCTCCCGACATGTACCCT  
GATGAAGTGCACCTCACTGTGGCCATCGTTTCCCTACCGCACTCGAGATGGAGAAGGACCAATTCACCACG  
GGTATGCTCCTCCTGGCTCAACCGGATACAGGCTGACGAACTGGTCCCCTGTTTCGTGAGAGGAGCACC  
CAGCTTCCACCTGCCCGGAACCCCAAGTCCCCTGCATCCTCGTTGGACCAGGCACCGGATTGCCCTT  
TTCCGAAGCTTCTGGCAACAGCGGCAATTTGATATCCAACACAAAGGAATGAACCCCTGCCCCATGGTCC  
TGGTCTTCGGGTGCCGCAATCCAAGATAGATCATATCTACAGGGAAGAGACCCTGCAGGCCAAGAACA  
GGGGTCTTCAGAGAGCTGTACACGGCTTACTCCCGGAGCCAGACAAACCAAGAAGTACGTGCAGGAC  
ATCCTGCAGGAGCAGCTGGCGGAGTCTGTGTACCGAGCCCTGAAGGAGCAAGGGGCCACATACGTCT  
GTGGGGACGTACCATGGCTGCTGATGTCTCAAAGCCATCCAGCGCATCATGACCCAGCAGGGGAAGCT  
CTCGGCAGAGGACGCCGGGATTCATCAGCCGGATGAGGGATGACAACCGATACCATGAGGATATTTTT  
GGAGTACCCTGCGAACGTACGAAGTGACCAACCGCCTTAGATCTGAGTCCATTGCCTTCATTGAAGAGA  
GCAAAAAAGACCCGATGAGTTTTTCAGCTCC

ACGCGTACGCGGCCGCTCGAGCAGAACTCATCTCAGAAGAGGATCTGGCAGCAATGATATCCTGGATT  
ACAAGGATGACGACGATAAGGTTTAA

**Protein Sequence:** >RC222384 representing NM\_000620  
 Red=Cloning site Green=Tags(s)

MEDHMFVQVQIQPNVISVRLFKRKVGGGLFLVKERVSKPPVVIISDLIRGGAAEQSGLIQAGDIILAVNGR  
 PLVDLSYDSALEVLRGIASETHVVLILRGPEGFTTHLETTFTGDGTPKTIRVTQPLGPPTKAVDL SHQP  
 AGKEQLAVDGDGSGPQNGPQHAYDDGQEQEAGSLPHANGLAPRPPGQDPAKKATRVSLQGRGENNELLKEIE  
 PVL SLL TSGSRGVKGGAPAKAEMKDMGIQVDRDLGKSHKPLPLGVENDRVFNDLWGKGNVPVVLNNPYS  
 EKEQPPTSQKQSPKNGSPSKPRFLKVKNWETEVLDTLHLKSTLETGCTEYICMGSIMHPSQHARRP  
 EDVRTKGQLFPLAKEFIDQYSSIKRFGSKAHMERLEEVNKEIDTTSTYQLKDTELIYGAKHAWRNASRC  
 VGRIQWSKLQVFDARDCTTAHGFMFNYICNHVKYATNKGNLRSAITIFPQRTDGKHD FRVWNSQLIRYAGY  
 KQPDGSTLGD PANVQFTEICIQQGWKPPRGRFDVLP LLLQANGNPELFIQPELVLEVP IRHPKFEWFK  
 DLGLKWYGLPAVSNM LLEIGGLEFSACPFSGWYMGTEIGVRDYCDNSRYNILEEVAKKMNLDMRKTSSLW  
 KDQALVEINI AVL YSFQSDKVTIVDHSATESFIKHMENEYRCRGGCPADWVWIVPPMGSITPVFHQEM  
 LNYRLTPSFEYQDPWNTHVWKGNTGPTKRRAIGFKLA EAVKFSAKLMGQAMAKRVKATILYATETGK  
 SQAYAKTLCEIFKHAFDAKVMSEEDYIVHLEHETLVLVVTSTFGNGDPPENGEKFGCALMEMRHPNSVQ  
 EERKSYKVRFNVSYSYDSQKSSGDGPDLRDNFESAGPLANVRFVFGLSRAYPHFCAGHAVDTLLEE  
 LGGERILKMREGDEL CGQEEAFRTWAKKVFKAACDVFCVGDVNI EKANSLISNDRSWKRNKFR LTFVA  
 EAPELTQGLSNVHKRVS AARLLSRQNLQSPKSSRSTIFVRLHTNGSQELQYQPGDHLGVFPGNHEDLVN  
 ALIERLEDAPPVNMVKVELLEERNTALGVISNWTDELRLPPCTIFQAFKYLDITTPPTPLQLQQFASL  
 ATSEKEQRLLVLSKGLQEYEEWKWGKNPTIVEVLEEFPSIQMPATLLL TQLSLLQPRYYSISSSPDMYP  
 DEVHLTVAIVSYRTRDGEPIIHHGVCSSWLNRIQADEL VPCFVRGAPSFHLP RNPQVPCILVGPGTGIAP  
 FRSFWQQRQFDIQHKGMNCPMVLVFGCRQSKIDHIYREETLQAKNKGVFRELYTAYSREPKPKKYVQD  
 ILQEQLAESVYRALKEQGGHIYVCGDVTMAADV LKAIQRIMTQQGKLSAEDAGVVISRMRDNRHEDIF  
 GVTLRTYEVTNRLRSESI AFIEESKKTDEVFSS

TRTRPLEQKLISEEDLAANDILDYKDDDDKV

**Chromatograms:** [https://cdn.origene.com/chromatograms/mk6204\\_f04.zip](https://cdn.origene.com/chromatograms/mk6204_f04.zip)

**Restriction Sites:** SgfI-MluI

**Cloning Scheme:**

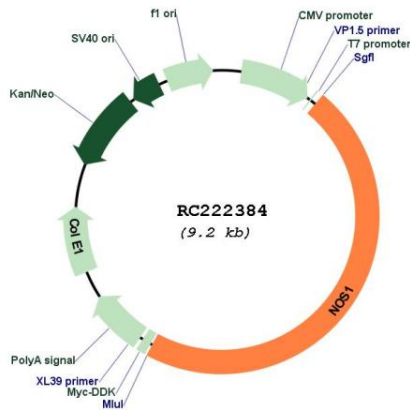


**ACCN:** NM\_000620

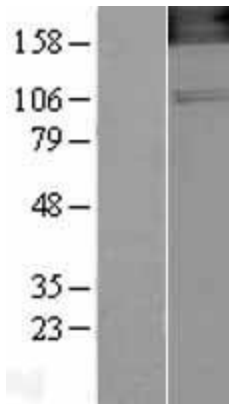
**ORF Size:** 4302 bp

<b>OTI Disclaimer:</b>	The molecular sequence of this clone aligns with the gene accession number as a point of reference only. However, individual transcript sequences of the same gene can differ through naturally occurring variations (e.g. polymorphisms), each with its own valid existence. This clone is substantially in agreement with the reference, but a complete review of all prevailing variants is recommended prior to use. <a href="#">More info</a>
<b>OTI Annotation:</b>	This clone was engineered to express the complete ORF with an expression tag. Expression varies depending on the nature of the gene.
<b>Components:</b>	The ORF clone is ion-exchange column purified and shipped in a 2D barcoded Matrix tube containing 10ug of transfection-ready, dried plasmid DNA (reconstitute with 100 ul of water).
<b>Reconstitution Method:</b>	<ol style="list-style-type: none"><li>1. Centrifuge at 5,000xg for 5min.</li><li>2. Carefully open the tube and add 100ul of sterile water to dissolve the DNA.</li><li>3. Close the tube and incubate for 10 minutes at room temperature.</li><li>4. Briefly vortex the tube and then do a quick spin (less than 5000xg) to concentrate the liquid at the bottom.</li><li>5. Store the suspended plasmid at -20°C. The DNA is stable for at least one year from date of shipping when stored at -20°C.</li></ol>
<b>RefSeq:</b>	<a href="#">NM_000620.5</a>
<b>RefSeq Size:</b>	7124 bp
<b>RefSeq ORF:</b>	4305 bp
<b>Locus ID:</b>	4842
<b>UniProt ID:</b>	<a href="#">P29475</a>
<b>Cytogenetics:</b>	12q24.22
<b>Protein Families:</b>	Druggable Genome
<b>Protein Pathways:</b>	Alzheimer's disease, Amyotrophic lateral sclerosis (ALS), Arginine and proline metabolism, Calcium signaling pathway, Long-term depression, Metabolic pathways, Pathways in cancer, Small cell lung cancer
<b>MW:</b>	160.8 kDa
<b>Gene Summary:</b>	The protein encoded by this gene belongs to the family of nitric oxide synthases, which synthesize nitric oxide from L-arginine. Nitric oxide is a reactive free radical, which acts as a biologic mediator in several processes, including neurotransmission, and antimicrobial and antitumoral activities. In the brain and peripheral nervous system, nitric oxide displays many properties of a neurotransmitter, and has been implicated in neurotoxicity associated with stroke and neurodegenerative diseases, neural regulation of smooth muscle, including peristalsis, and penile erection. This protein is ubiquitously expressed, with high level of expression in skeletal muscle. Multiple transcript variants that differ in the 5' UTR have been described for this gene but the full-length nature of these transcripts is not known. Additionally, alternatively spliced transcript variants encoding different isoforms (some testis-specific) have been found for this gene.[provided by RefSeq, Feb 2011]

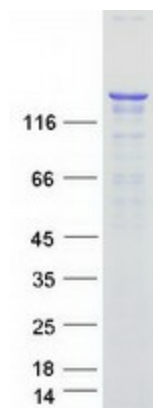
Product images:



Circular map for RC222384



Western blot validation of overexpression lysate (Cat# [LY400208]) using anti-DDK antibody (Cat# [TA50011-100]). Left: Cell lysates from untransfected HEK293T cells; Right: Cell lysates from HEK293T cells transfected with RC222384 using transfection reagent MegaTran 2.0 (Cat# [TT210002]).



Coomassie blue staining of purified NOS1 protein (Cat# [TP322384]). The protein was produced from HEK293T cells transfected with NOS1 cDNA clone (Cat# RC222384) using MegaTran 2.0 (Cat# [TT210002]).