

Product datasheet for **RC222381**

ANKS6 (NM_173551) Human Tagged ORF Clone

Product data:

Product Type:	Expression Plasmids
Product Name:	ANKS6 (NM_173551) Human Tagged ORF Clone
Tag:	Myc-DDK
Symbol:	ANKS6
Synonyms:	ANKRD14; NPHP16; PKDR1; SAMD6
Mammalian Cell Selection:	Neomycin
Vector:	pCMV6-Entry (PS100001)
E. coli Selection:	Kanamycin (25 ug/mL)



[View online »](#)

ORF Nucleotide Sequence:

>RC222381 representing NM_173551
 Red=Cloning site Blue=ORF Green=Tags(s)

CTATAGGGCGGCCGGGAATTCGTCGACTGGATCCGGTACCGAGGAGATCTGCCGCCGCGATCGCCGGCGC
 GCC

ATGGGCGAGGGCGGGCTGCCCGGCCCTCCAGCTGCTGTGCGCGCTGTGACCAGGGCGACACGGAGA
 CGGCGCGCGGCTGCTGGAGCCGGGGCGGCGGAGCCAGCCGAGCGCGGCGGGAGCCGAGGCGGGCGC
 GGAGCCGCGGGGGCCGAGGTGGCCGGGCCGGGCGCAGCGCGGGGGCAGTCGGGGCTCCGGTGCC
 GTGGATTGCTCGGACGAGGGCGGCAACACCGCACTGCAGTTCCGCCGCGCGGGGGCCACGAACCCTGG
 TGCGCTTCTGCTGCGCCGCGGTGCCTCGGTCAACAGCCGCAACCACTACGGCTGGAGCGCGCTCATGCA
 GGGCGCCAGATTTGGGCATGTGAGTGTGGCACACCTCCTGTTGGATCACGGGGCTGATGTCAATGCCAG
 AACCGGCTGGGGCCAGTGTCTACTGTGGCTTCTCGGGCGGCCACCTGGGTGTGGTGAAGCTGCTCC
 TGAAGCCGGTGCCTTTGTGGACCATCACACCCTTACGGCGAGCAACTGGGTTGGGCGCAGCAGGGA
 TGAGCCCTTGACATCACAGCCCTGATGGCTGCCATCCAGCACGGGCACGAGGCCGTGGTGCCTACTG
 ATGGAGTGGGGCGCGACCCCAACCACGACGCCCGGACCGTGGGCTGGAGCCCGTGATGCTGGCCGCAC
 TCACTGGGCGGCTTGAGTGGCCAGCAGCTGGTGGAGAAGGGCGCCAACCTGACCACCTCAGCGTGT
 GGAGAAGACCGCCTTCGAGGTTGCACTGGACTGCAAGCACAGGGACCTTGTAGACTACCTGGACCCGCTG
 ACCACCGTCAGGCCAAAACAGATGAGGAGAAAAGGCGACCTGATATTTCCATGCATTGAAAATGGGAA
 ACTTCCAGCTGGTCAAAGAGATTGCCGATGAAGACCCAGCCACGTGAATTGGTCAATGGGACGGGGC
 GACGCCACTGATGCTAGCAGCTGTACGGGGCAGCTGGCTCTGGTGCAGCTGCTGGTGGAGAGGCACGG
 GATGTTGACAAGCAGGACAGCGTGCATGGCTGGACGGCCCTCATGCAGGCAACCTACCATGGGAATAAG
 AAATTGAAAATATCTGCTAAACCAAGGGCCGATGTCACCTTTCGTGCAAAAAATGGATACACGGCCTT
 TGACCTGGTGTGCTGCTGAATGATCCCGACACGGAACCTGTTCCGACTGCTGGCATCTGTCTGCATGCAG
 GTGAATAAAGACAAGGGCCGGCCGAGCCACCAGCCTCCCTGCCCACTCGAAGGTCCGACAGCCCTGGA
 GCATCCAGTGTGCCGATGACAAGGGTGGACTGAAGTCTGGTGAACCGAATGTCCAATCGGTTCCG
 AAAGCTCAAAGTATGACAGAGCTGCCCGTGGGCTGTCCAGCAACCAGCCTTTCCTTTCTGACGAG
 CCTGAGCCAGCTTGGACTCCACAATGAGGGTGCACCCAGGACAAGACAAGCCGCTCTGCACTCCCTG
 ATGCGGCCCTGTGACCAAAGACAATGGTCTGGGAGCACAAGAGGAGAAAAGGAAGACAGCTTATTGAC
 AACCATGCTTCGAAACGGAGTCCCTCACCAGACTCCCGAGTGACAAGCTGAAAGCAGTATCCCCCA
 TTCTACCCCTTCCAGTTTGTGCTGTGGAGCTGATCGGTCCCGACGCGTCAACGGGAAGGCAG
 ACCCATGAAGACTGCGCTGCCCCAGAGAGCCAGCAGGGGCCACCCCGTGGGCGCGGGGACAGACAC
 TACACCCGTGAGGCTGTTAAATTTCAAGCCTCCCAAGGCCAGCCTCTTCTGCCAATTCTGGAAC
 TTCAACCACTCGCCTCATTATCGGGCGGCTCCAGTGGGGTAGGTGTGAGCCGGCACGGTGGGGAGCTGC
 TTAACCGCTCAGGTGGCAGCATAGACAATGTCTTGTCCAAAATCGCTGCCAGAGGAAAAAGCAGCCGG
 ATTATTGGAGCAGAAACCCAGCCATCGGTCAAGCCCTGTGGGGCCAGCACCGGGTCCAGCCCGTGTGAG
 CTTCCAGCCTCCCTGCAGGTGGCAGCGCTCCTGTTGGCAAGAAATTGGAGACCAGAAAAGGCCTCCAT
 CTGGAACCTTCCACTACCTCCAAGAGCACCTTCCAACCTCACGCCCTCCCTCACCCAAGGGCACAC
 TGCAGAGTCCCTCAGTGTCTTCTCGTCATCCCATCGGCAGTCCAAGAGCAGTGGGGGCTCCAGCAGTGGC
 ACCATCACAGATGAGGATGAACTGACTGGAATCCTTAAGAAATTACACTTGAGAAATATCAGCCATTT
 TTGAGGAACAAGAGGTGGACATGGAAGCGTTCCTCACACTGACTGACGGTGAAGGAGCTGGGAAT
 TAAGACAGATGGGTCCAGGCAGCAGATTCTGGCAGCGATTCTGAACTGAACGCAGGCAAGGGACGCGAG
 AGACAAATTTTACAGGAAACCATTCACAACCTTCACTTCTCTTTGAGAGCAGTGCCAGCAACACCGAGG
 CCCCTGGCAACAGCCCTGTGCG

ACGGGGCGCTCGAGCAGAACTCATCTCAGAAGAGGATCTGGCAGCAAATGATATCTGGA
 TTACAAGGATGACGACGATAAGGTTAA

Protein Sequence: >RC222381 representing NM_173551
Red=Cloning site Green=Tags(s)

MGEGGLPPAFQLLLACDQGDTEARRLLEPGAEPERGAEPAGAEPAGAEVAGPGAAAAGAVGAPVP
 VDCSDEAGNTALQFAAAGGHEPLVRFLRRGASVNSRNHYGWSALMQAARFGHVSVAHLLLDHGADVNAQ
 NRLGASVLTVASRGGHLGVVKKLLEAGAFVDHHPHSGEQLGLGGSRDEPLDITALMAAIQHGHEAVVRL
 MEWGADPNHAARTVGSPLMLAALTGRLGVAQQLVEKGANPDHLSVLEKTAFEVALDCKHRDLVDYLDPL
 TTVRPKTDEEKRRPDI FHALKMGNFQLVKEIADEDP SHVNLVNGDGATPLMLAAVGTQLALVQLLVERHA
 DVDKQDSVHGWTALMQATYHGNKEIVKYLLNQADVTLRAKNGYTAFLDLVMLLNDPDTLVRLLASVCMQ
 VNKDKGRPSHQPLPHSKYRQPWSIPVLPDDKGLKSWNRMSNRFRKLLMQTLPRGLSSNQPLPFSD
 PEPALDSTMRAAPQDKTSRSALPDAAPVTKDNGPGSTRGEKEDTLLTTMLRNGAPLTRLPDKLKAVIPP
 FLPPSSFELWSSDRSRTRHNGKADPMKALPQRASRGHPVGGGGTDTTPVRPVKFPSPRSPASSANS
 FNHSPHSSGGSSGVSRHGGELLNRSGGSIDNVL SQIAAQRKKAAGLLEQKPSHRSSPVGPA
 GSSPSELPASPAGGSAPVGGKLET SKRPPSGTSTTSKSTSP TLPSPSPKGHTAESVSSSSSHRQSKSSGSSSSG
 TITDEDEL TGILKKLSLEKYQPIFEEQEVDMEAF LTLTDGDLKELGIKTGDSRQQILAAISELNAGKGRE
 RQILQETIHNHSSFESSASNTRAPGNSPCA

TRRLEQKLI SEEDLAANDILDYKDDDDKV

Chromatograms: https://cdn.origene.com/chromatograms/mk8100_d09.zip

Restriction Sites: AscI-NotI

Cloning Scheme:

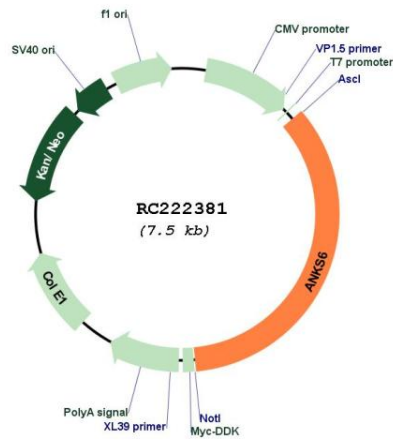
Cloning sites used for ORF Shuttling:



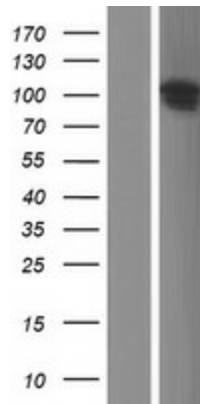
* The last codon before the Stop codon of the ORF

ACCN:	NM_173551
ORF Size:	2613 bp
OTI Disclaimer:	The molecular sequence of this clone aligns with the gene accession number as a point of reference only. However, individual transcript sequences of the same gene can differ through naturally occurring variations (e.g. polymorphisms), each with its own valid existence. This clone is substantially in agreement with the reference, but a complete review of all prevailing variants is recommended prior to use. More info
OTI Annotation:	This clone was engineered to express the complete ORF with an expression tag. Expression varies depending on the nature of the gene.
Components:	The ORF clone is ion-exchange column purified and shipped in a 2D barcoded Matrix tube containing 10ug of transfection-ready, dried plasmid DNA (reconstitute with 100 ul of water).
Reconstitution Method:	<ol style="list-style-type: none">1. Centrifuge at 5,000xg for 5min.2. Carefully open the tube and add 100ul of sterile water to dissolve the DNA.3. Close the tube and incubate for 10 minutes at room temperature.4. Briefly vortex the tube and then do a quick spin (less than 5000xg) to concentrate the liquid at the bottom.5. Store the suspended plasmid at -20°C. The DNA is stable for at least one year from date of shipping when stored at -20°C.
RefSeq:	NM_173551.5
RefSeq Size:	7147 bp
RefSeq ORF:	2616 bp
Locus ID:	203286
UniProt ID:	Q68DC2
Cytogenetics:	9q22.33
MW:	92.2 kDa
Gene Summary:	This gene encodes a protein containing multiple ankyrin repeats and a SAM domain. It is thought that this protein may localize to the proximal region of the primary cilium, and may play a role in renal and cardiovascular development. Mutations in this gene have been shown to cause a form of nephronophthisis (NPHP16), a chronic tubulo-interstitial nephritis. [provided by RefSeq, Jul 2015]

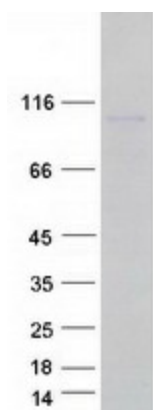
Product images:



Circular map for RC222381



Western blot validation of overexpression lysate (Cat# [LY406462]) using anti-DDK antibody (Cat# [TA50011-100]). Left: Cell lysates from untransfected HEK293T cells; Right: Cell lysates from HEK293T cells transfected with RC222381 using transfection reagent MegaTran 2.0 (Cat# [TT210002]).



Coomassie blue staining of purified ANKS6 protein (Cat# [TP322381]). The protein was produced from HEK293T cells transfected with ANKS6 cDNA clone (Cat# RC222381) using MegaTran 2.0 (Cat# [TT210002]).