

Product datasheet for **RC222376**

DYRK1B (NM_006483) Human Tagged ORF Clone

Product data:

Product Type:	Expression Plasmids
Product Name:	DYRK1B (NM_006483) Human Tagged ORF Clone
Tag:	Myc-DDK
Symbol:	DYRK1B
Synonyms:	AOMS3; MIRK
Mammalian Cell Selection:	Neomycin
Vector:	pCMV6-Entry (PS100001)
E. coli Selection:	Kanamycin (25 ug/mL)



[View online »](#)

ORF Nucleotide Sequence:

>RC222376 representing NM_006483
 Red=Cloning site Blue=ORF Green=Tags(s)

TTTTGTAATACGACTCACTATAGGGCGGCCGGAATTCGTCGACTGGATCCGGTACCGAGGAGATCTGCC
 GCC**CGGATCGCC**

ATGGCCGTCCACCGGGCCATGGTCCCTTCTCTGGCTTCCAGGGCCCCAGGAGCACACGCAGGTATTGC
 CTGATGTGCGGCTACTGCCTCGGAGGCTGCCCCTGGCCTTCCGGGATGCAACCTCAGCCCCGCTGGGTAA
 GCTCTCTGTGGACCTCATCAAGACCTACAAGCACATCAATGAGGTATACTATGCGAAGAAGAAGCGGCGG
 GCCCAGCAGGCGCCACCCAGGATTCGAGCAACAAGAAGGAGAAGAAGGTCTGAACCATGGTTATGATG
 ACGACAACCATGACTACATCGTGCGCAGTGGCAGCGCTGGTGGAGCGCTACGAAATTGACTCGCTCAT
 TGGCAAAGGCTCCTTTGGCCAGGTGGTAAAGCCTATGATCATCAGACCCAGGAGCTTGTGGCCATCAAG
 ATCATCAAGAACAAAAGGCTTTCTGAACCAGGCCAGATTGAGCTGCGGCTGCTGGAGCTGATGAACC
 AGCATGACACGGAGATGAAGTACTATATAGTACACCTGAAGCGGCACTTCATGTTCCGGAACCACCTGTG
 CCTGGTATTTGAGCTGCTGCTACAACCTGTACGACCTCTGCGCAACCCCACTTCCGCGGCGTCTCG
 CTGAACCTGACCCGGAAGCTGGCGCAGCAGCTCTGCACGGCACTGCTCTTCTGGCCACGCTGAGCTCA
 GCATCATTCACTGCGACCTCAAGCCCGAAAACATCTTGCTGTGCAACCCCAAGCGCAGCGCCATCAAGAT
 TGTGGACTTTCGGCAGCTCCTGCCAGCTTGGCCAGAGGATCTACCAGTATATCCAGAGCCGCTTCTACCGC
 TCACCTGAGGTGCTCCTGGGCACACCCTACGACCTGGCCATTGACATGTGGTCCCTGGGCTGCATCCTTG
 TGGAGATGCACACCGGAGAGCCCCTCTTTCAGTGGCTCCAATGAGGTGACCCAGATGAACCGCATTGTGGA
 GGTGCTGGGATCCCACCGGCCCATGCTGGACCAGGCGCCCAAGGCTCGAAGTACTTTGAACGGCTG
 CCTGGGGTGGCTGGACCCTACGAAGGACGAAAGAAGTCTGAGGAGGACCTGGTGGTGGCAGTGGAGT
 ATGAGCCCGCCCGCCGATCAGCCCCCTGGGGCTCTGCAGCACGGCTTCTTCCGCGCCAGGCGCCGACGA
 GGCCACCAACACGGGCCCGCAGGACAGTGCCTCCACCTCGCCCGCCCTCGACACCTGCCCTCT
 TCCAGCACCGCCAGCTCCATCTCCAGTTCTGGAGGCTCCAGTGGCTCCTCCAGTGACAACCGGACCTACC
 GCTACAGCAACCGATATTGTGGGGCCCTGGGCCCTATCACAGACTGTGAGATGAACAGCCCCCAGGT
 CCCACCTCCCAGCCGCTGCGGCCCTGGCAGGGGGTGTGTGCCCCACAAGACACATCAAGCCCTGCC
 TCTGCCTCGTCACTGCCTGGACCGGGCCAGTTACCCCCAGCCCCGATACCTTGGTGTCCCCAT
 CACCAACCTCACCACCACCCCGAGCTGATGGATGTGAGCTGGTGGGCGGCCCTGCTGACTGCTCCCC
 ACCTCACCAGCGCTGCCCCCAGCACCAGGCTGCCTCAGCCCTCCGGACTCGGATGACTGGAGGTCGT
 CCACCCCTCCCGCTCCTGATGACCCTGCCACTCTGGGGCTCACCTGGGCTCCGTGGTGTACCCAGA
 GCACAGCAGCCAGCTCG

ACGCGTACGCGGCCGCTCGAGCAGAAACTCATCTCAGAAGAGGATCTGGCAGCAAATGATATCCTGGATT
 ACAAGGATGACGACGATAAGGTTTAA

Protein Sequence:

>RC222376 representing NM_006483
 Red=Cloning site Green=Tags(s)

MAVPPGHGPFSGFPGPQEHTQVLPDVRLLPRRLPLAFRDATSAPLRKLSVDLIKTYKHINEVYYAKKRR
 AQQAPPQDSSNKKEKKVLNHGYDDNDHYIVRSGERWLERYEIDSLIGKGSFGVVKAYDHQTQELVAIK
 I IKNKKAFLNQAQIELRLELMNQHDTEMKYYIVHLKRHFMRNHLCLVFELLSYNLYDLLRNTHFRGVS
 LNLTRKLAQQLCTALLFLATPELSIIHCDLKPENILLCNPKRSAIKIVDFGSSCQLQRIYQYIQSRFYR
 SPEVLLGTPYDLAIDMWSLGCILVEMHTGEPLFSGSNEVDQMNRIEVLGIPPAAMLQAPKARKYFERL
 PGGGWTLRRTKELRKDLVLRMLEYEPAAARISPLGALQHGFRRRTADEATNTGPAGSSASTSPAPLDTCP
 SSTASSISSSGSSGSSSDNRTYRYSNRYCGGPPITDCEMNSPQVPPSQPLRPWAGGDVPHKTHQAPA
 SASSLPGTGAQLPPQRYLGRPPSPTSPPPPELMDVSLVGGPADCSPPHPAPAPQHPAASALRTRMTGGR
 PPLPPDDPATLGPLHLGRVGPQSTAASS

TRTRPLEQKLISEEDLAANDILDYKDDDDKV

Chromatograms:

https://cdn.origene.com/chromatograms/mk8068_f08.zip

Restriction Sites: SgfI-MluI

Cloning Scheme:



ACCN: NM_006483

ORF Size: 1767 bp

OTI Disclaimer: The molecular sequence of this clone aligns with the gene accession number as a point of reference only. However, individual transcript sequences of the same gene can differ through naturally occurring variations (e.g. polymorphisms), each with its own valid existence. This clone is substantially in agreement with the reference, but a complete review of all prevailing variants is recommended prior to use. [More info](#)

OTI Annotation: This clone was engineered to express the complete ORF with an expression tag. Expression varies depending on the nature of the gene.

Components: The ORF clone is ion-exchange column purified and shipped in a 2D barcoded Matrix tube containing 10ug of transfection-ready, dried plasmid DNA (reconstitute with 100 ul of water).

- Reconstitution Method:
1. Centrifuge at 5,000xg for 5min.
 2. Carefully open the tube and add 100ul of sterile water to dissolve the DNA.
 3. Close the tube and incubate for 10 minutes at room temperature.
 4. Briefly vortex the tube and then do a quick spin (less than 5000xg) to concentrate the liquid at the bottom.
 5. Store the suspended plasmid at -20°C. The DNA is stable for at least one year from date of shipping when stored at -20°C.

RefSeq: [NM_006483.3](#)

RefSeq Size: 2420 bp

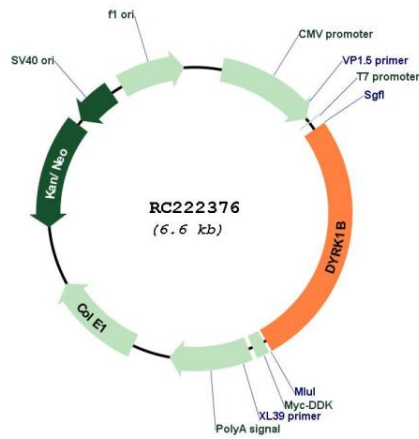
RefSeq ORF: 1770 bp

Locus ID: 9149

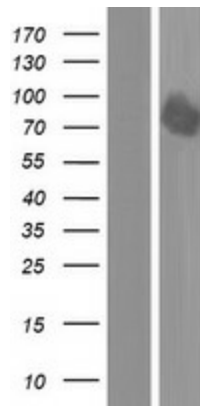
UniProt ID: [Q9Y463](#)
Cytogenetics: 19q13.2
Protein Families: Druggable Genome, Protein Kinase, Transcription Factors
MW: 64.8 kDa

Gene Summary: This gene encodes a member of a family of nuclear-localized protein kinases. The encoded protein participates in the regulation of the cell cycle. Expression of this gene may be altered in tumor cells, and mutations in this gene were found to cause abdominal obesity-metabolic syndrome 3. Alternative splicing results in multiple transcript variants. [provided by RefSeq, Jun 2014]

Product images:



Circular map for RC222376



Western blot validation of overexpression lysate (Cat# [LY416603]) using anti-DDK antibody (Cat# [TA50011-100]). Left: Cell lysates from untransfected HEK293T cells; Right: Cell lysates from HEK293T cells transfected with RC222376 using transfection reagent MegaTran 2.0 (Cat# [TT210002]).