

Product datasheet for RC222375

FYTTD1 (NM_032288) Human Tagged ORF Clone

Product data:

Product Type: Expression Plasmids
 Product Name: FYTTD1 (NM_032288) Human Tagged ORF Clone
 Tag: Myc-DDK
 Symbol: FYTTD1
 Synonyms: UIF
 Mammalian Cell Selection: Neomycin
 Vector: pCMV6-Entry (PS100001)
 E. coli Selection: Kanamycin (25 ug/mL)
 ORF Nucleotide Sequence: >RC222375 ORF sequence
 Red=Cloning site Blue=ORF Green=Tags(s)

TTTTGTAATACGACTCACTATAGGGCGGCCGGAATTCGTCGACTGGATCCGGTACCGAGGAGATCTGCC
 GCC**CGATCGCC**

ATGAACCGGTTTGGTACCCGGTTGGTGGGAGCCACGGCGACTTCTTCGCCGCCGCGAAGGCCCGCAGCA
 ATGAAAACCTCGACAAAATAGATATGTCTTTGGATGATATCATCAAGTTGAATCGAAAGGAAGGAAAGAA
 GCAGAATTTTCCAAGACTAAATAGAAGACTCCTCCAGCAAAGTGGTGCCAGCAATTCAGGATGAGAGTG
 CGATGGGGAATCCAACAGAATTCTGGTTTTGGTAAGACTAGTCTGAATCATAGAGGAAGAGTAATGCCTG
 GAAAGAGACGTCCTAATGGAGTTATCACTGGCCTTGCAGCTAGGAAAACGACTGGAATTCGAAAAGGAAT
 TAGTCCTATGAATCGTCCACCTCTAAGTGACAAGAATATAGAACAATATTTTCCAGTGTTAAAAAGGAAG
 GCAAACCTTCTGAGACAAAATGAAGGGCAGAGGAAACAGTAGCAGTTCTCAAGAGACCTAGCCAGCTAA
 GCAGAAAAAATAACATTCCAGCTAATTTTACCAGGAGTGGAAAATAAATTAATCATCAGAAAAGATACTCG
 TCAGGCAACTTTTCTTTTTCAGAAGAGCCCTGAAGGTGCAGGCCAGTTGAATACAGAACTGCTAGAC
 GATGTAGTAGCAAAGAGAAGTCAATGGCGGACTTCCACCACAAAATGGAGGGATTTTACTGTATCTA
 TTGACAATCCTGGAGCAGTGCAATGCCAGTAACTCAGAAACACGATTAACCTGTAAGTGTACCTTC
 ATTTTTAACAAAGCGGGAGCAAAGTGACGTCAAGAAAGTTCTAAAGGTGTTCCCTGCAGTTTACATA
 AACAGTGTGGAAAACAGACAGGGATGACGTTGAATGAGCGGTTGGGATCCTGAAGGAACAAAGAGCCA
 CTCTCACATACAACAAAGGGGAAGCCGCTTTGTACCCGTGGGA

ACGCGTACGCGGCCGCTCGAGCAGAAACTCATCTCAGAAGAGGATCTGGCAGCAATGATATCCTGGATT
 ACAAGGATGACGACGATAAGGTTTAA



[View online »](#)

Protein Sequence: >RC222375 protein sequence
Red=Cloning site Green=Tags(s)

MNRFGTRLVGATATSSPPPKARSNENLDKIDMSLDDIIKLNKKEGKKQNFRLNRLLQQSGAQQFRMRV
 RWGIQQNSGFGKTSLNHRGRVMPGKRRPNGVITGLAARKTTGIRKGISPMNRPPLSDKNIEQYFPVLKRR
 ANLLRQNEGQRKPVAVLKRPSQLSRKNNIPANFTRSGNKLNHQKDRQATFLFRRGLKVQAQLNTEQLLD
 DVVAKRTRQWRSTTTNGGILTVSIDNPGAVQCPVTQKPRLTRTAVPSFLTREKQSDVKKVPGVPLQFDI
 NSVGKQTGMTLNERFGILKEQRATLTYNKGGSRFVTVG

TRTRPLEQKLISEEDLAANDILDYKDDDDKV

Chromatograms: https://cdn.origene.com/chromatograms/mk6534_g09.zip

Restriction Sites: SgfI-MluI

Cloning Scheme:



ACCN: NM_032288

ORF Size: 954 bp

OTI Disclaimer: The molecular sequence of this clone aligns with the gene accession number as a point of reference only. However, individual transcript sequences of the same gene can differ through naturally occurring variations (e.g. polymorphisms), each with its own valid existence. This clone is substantially in agreement with the reference, but a complete review of all prevailing variants is recommended prior to use. [More info](#)

OTI Annotation: This clone was engineered to express the complete ORF with an expression tag. Expression varies depending on the nature of the gene.

Components: The ORF clone is ion-exchange column purified and shipped in a 2D barcoded Matrix tube containing 10ug of transfection-ready, dried plasmid DNA (reconstitute with 100 ul of water).

Reconstitution Method:

1. Centrifuge at 5,000xg for 5min.
2. Carefully open the tube and add 100ul of sterile water to dissolve the DNA.
3. Close the tube and incubate for 10 minutes at room temperature.
4. Briefly vortex the tube and then do a quick spin (less than 5000xg) to concentrate the liquid at the bottom.
5. Store the suspended plasmid at -20°C. The DNA is stable for at least one year from date of shipping when stored at -20°C.

RefSeq: [NM_032288.3](#)

RefSeq Size: 3713 bp

RefSeq ORF: 957 bp

Locus ID: 84248

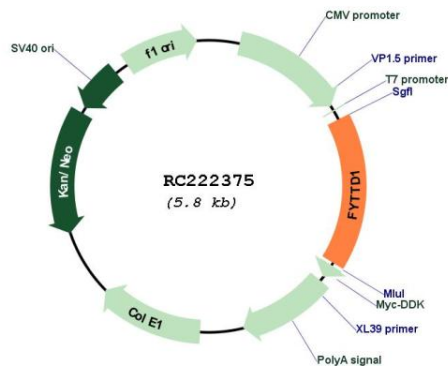
UniProt ID: [Q96QD9](#)

Cytogenetics: 3q29

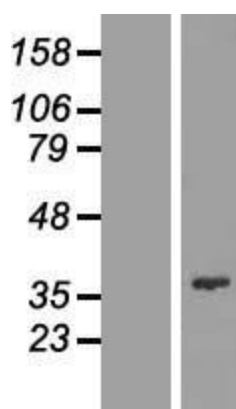
MW: 35.8 kDa

Gene Summary: Required for mRNA export from the nucleus to the cytoplasm. Acts as an adapter that uses the DDX39B/UAP56-NFX1 pathway to ensure efficient mRNA export and delivering to the nuclear pore. Associates with spliced and unspliced mRNAs simultaneously with ALYREF/THOC4.[UniProtKB/Swiss-Prot Function]

Product images:



Circular map for RC222375



Western blot validation of overexpression lysate (Cat# [LY410231]) using anti-DDK antibody (Cat# [TA50011-100]). Left: Cell lysates from untransfected HEK293T cells; Right: Cell lysates from HEK293T cells transfected with RC222375 using transfection reagent MegaTran 2.0 (Cat# [TT210002]).