

## Product datasheet for **RC222373**

### MTMR7 (NM\_004686) Human Tagged ORF Clone

#### Product data:

Product Type:	Expression Plasmids
Product Name:	MTMR7 (NM_004686) Human Tagged ORF Clone
Tag:	Myc-DDK
Symbol:	MTMR7
Mammalian Cell Selection:	Neomycin
Vector:	pCMV6-Entry (PS100001)
E. coli Selection:	Kanamycin (25 ug/mL)



[View online »](#)

ORF Nucleotide  
Sequence:

>RC222373 ORF sequence  
Red=Cloning site Blue=ORF Green=Tags(s)

TTTTGTAATACGACTCACTATAGGGCGGCCGGGAATTCGTCGACTGGATCCGGTACCGAGGAGATCTGCC  
GCCGCGATCGCC

ATGGAGCACATCCGCACGCCAAGTTGAAAATGTCCGCTTGGTAGATCGAGTGTCTCTAAAAAGCAG  
CTCTAGGTAAGTTGATTTGACGGCTACCCATGTCATATTCGTGGAAAATTCACCTGACGCAAGAAAAGA  
AACATGGATTCTTCACAGTCAGATTTCCACCATTGAGAAAACAGGCAACAACCGCTACCGGATGCCCTCTG  
CTGATTCGCTGCAAGAATTTTCAGATAATACAGCTCATCATACCTCAGGAAAAGAGATTGCCACGACGTGT  
ACATCTCCCTGATACGCCTTGAAGGCCAGTGAATATGAGGAGTTATACTGCTTTTCATCAACCCCAT  
GCTGGATAAAGAAGAAAGAGAGCAAGGCTGGGTGCTGATCGATCTTAGTGAAGAATACACGCGGATGGGC  
CTCCCTAATCATTACTGGCAGCTCAGCGATGTGAATAGAGACTATAGAGTCTGTGACTCTTATCCTACTG  
AACTGTACGTTCCAAAATCGGCCACGGCACACATCATAGTGGGGAGTTCCAAATTCGGAGTAGACGGCG  
ATTTCTGTCTTTCTTACTATTATAAAGATAACCACGCTCCATCTGCCGGAGCAGCCAGCCCCGTGCC  
GGCTTCAGTGCCCGGTGCTTAGAGGACGAGCAGATGCTCCAGGCCATTAGGAAAGCAATCCAGGAAGTG  
ACTTCGTTTATGTCGTTGACACCCGGCCTAAACTTAATGCAATGGCAAATCGTGCTGCAGGGAAAGGCTA  
TGAGAATGAAGACAATTATTCCAATATCAAGTTTTCAGTTTATCGGGATAGAGAACATCCATGTCATGAGG  
AACAGTCTGCAGAAAATGCTGGAAGTGTGTGAACCTAAATCTCCCTCCATGAGTGATTTCTGTGGGGTC  
TGGAGAACTCTGGCTGGTTAAGGCACATTAAGCCATAATGGATGCAGGAATCTTCATTGCAAAGGCAGT  
GTCAGAGGAAGGGCAAGTGTGCTTGTCTACTGTTCTGATGGCTGGGACAGGACCGCTCAGGTGTGCTCG  
GTGGCAAGCCTGCTGCTGGACCCCTCACTACCGACTCTGAAGGGCTTCATGGTATTAATTGAAAAGGACT  
GGATTTCTTTGGTCATAAGTTTAATCACCGATATGGCAATCTAGATGGTGACCCAAAAGAAATCTCTCC  
AGTTATTGACCAGTTCATTGAGTGTGTTTGGCAGTTAATGGAACAATTTCCCTGTGCCTTTGAGTTCAAT  
GAGAGTTTTTTGATTCACATTCAACATCACATTTATTCCTGCCAGTTTGGAACTTCTATGTAACAGCC  
AAAAGGAGAGACGAGAATCAAGATTCAAGAAAGAACATACTCATTATGGGCTCACCTGTGGAAGAATCG  
GGCCGACTACCTGAATCCTCTGTTTAGAGCTGATCACAGCCAGACTCAGGGAACCCTTCTCTCCCTACA  
ACACCATGTAACCTCATGTACAAGTTTTGGAGTGGAAATGTATAACCGCTTTGAAAAGGGGATGCAGCCCC  
GACAGTCAGTTACAGATTACCTAATGGCAGTGAAGGAAGAACTCAGCAGCTAGAGGAAGAACTAGAGGC  
CCTGGAAGAAAGGCTGGAATAAATCAAAAGGTCCAGTTAAATTGCACTAAGGTGAAGAGTAAGCAAAGT  
GAGCCCAGCAAGCACTCAGGGTTTTCTACCTCAGACAACAGCATAGCCAACACTCCCAGGATTACAGTG  
GGAATATGAAATCATTTCCATCCCGAGCCCTTACAAGGCGATGAAGATTCTGCTCTGATTCTAATCCCA  
AGACAATCTGAAAAGTTCAGATCCAGATCTGTCAGCCAACAGTGACCAAGAGTCCGGGGTGGAGGATTTG  
AGCTGTGGTCTCCAAGTGGTGGTGAAGATGACCCGAGTGAAGATAGTGGCAAGGACCGGGATTCTGATG  
AAGCCGTGTTTCTCACTGCC

ACGCGTACGCGGCCGCTCGAGCAGAACTCATCTCAGAAGAGGATCTGGCAGCAAATGATATCCTGGATT  
ACAAGGATGACGACGATAAGGTTTAA

**Protein Sequence:** >RC222373 protein sequence  
Red=Cloning site Green=Tags(s)

```
MEHIRTPKVENVRLVDRVSPKKAALGTL YLTATHVIFVENS PDARKETWILHSQISTIEKQATTATGCPL
LIRCKNFQIIQLIIPQERDCHDVYISLIRLARPVKYEEL YCF SFNPMLDKEEREQGWVLIDLSEEYTRMG
LPNHYWQLSDVNRDYRVCD SYPTELYVPKSATAHIIVGSSKFRSRRRFPVLSYYYKDNHASICRSSQPLS
GFSARCLEDEQMLQAIRKANPGSDFVYVVDTRPKLNAMANRAAGKGYENEDNYSNIK FQFIGIENIHVMR
NSLQKMLEVCELKSPMSDFLWGLENSGWL RHIKAIMDAGIFIAKAVSEEGASVLVHCSDGWDRTAQVCS
VASLLLDPHYRTLKGF MVLEIKDWISFGHKFNHRYGNLDGDPKEISPVIDQFIECVWQLMEQFPCAFEFN
ERFLIHIQHIIYSCQFGNFLCNSQKERRELKIQERTYSLWAHLWKNRADYLNPLFRADHSQTQGT LHLPT
TPCNFMYKFWSGMYNRF EKGMQPRQSVTDYLMAYKEETQQL EEELEALEERLEKI QKVQLNCTKVKSKQS
EPSKHSGFSTSDNSIANTPQDYSNMKSFSPSRSPSQGDEDSALIL TQDNLKSSDPDL SANSQESGVEDL
SCRSPSGEGHAPSEDSGKDRDSDEAVFLTA
```

TRTRPLEQKLI SEEDLAANDILDYKDDDDKV

**Chromatograms:** [https://cdn.origene.com/chromatograms/mk6606\\_a10.zip](https://cdn.origene.com/chromatograms/mk6606_a10.zip)

**Restriction Sites:** SgfI-MluI

**Cloning Scheme:**



**ACCN:** NM\_004686

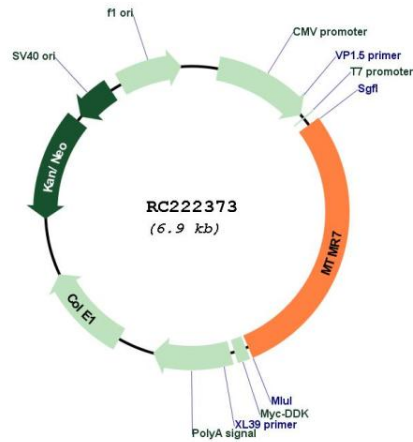
**ORF Size:** 1980 bp

**OTI Disclaimer:** The molecular sequence of this clone aligns with the gene accession number as a point of reference only. However, individual transcript sequences of the same gene can differ through naturally occurring variations (e.g. polymorphisms), each with its own valid existence. This clone is substantially in agreement with the reference, but a complete review of all prevailing variants is recommended prior to use. [More info](#)

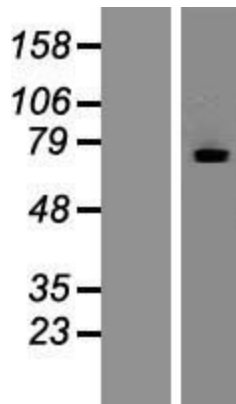
**OTI Annotation:** This clone was engineered to express the complete ORF with an expression tag. Expression varies depending on the nature of the gene.

<b>Components:</b>	The ORF clone is ion-exchange column purified and shipped in a 2D barcoded Matrix tube containing 10ug of transfection-ready, dried plasmid DNA (reconstitute with 100 ul of water).
<b>Reconstitution Method:</b>	<ol style="list-style-type: none"><li>1. Centrifuge at 5,000xg for 5min.</li><li>2. Carefully open the tube and add 100ul of sterile water to dissolve the DNA.</li><li>3. Close the tube and incubate for 10 minutes at room temperature.</li><li>4. Briefly vortex the tube and then do a quick spin (less than 5000xg) to concentrate the liquid at the bottom.</li><li>5. Store the suspended plasmid at -20°C. The DNA is stable for at least one year from date of shipping when stored at -20°C.</li></ol>
<b>RefSeq:</b>	<a href="#">NM_004686.5</a>
<b>RefSeq Size:</b>	5302 bp
<b>RefSeq ORF:</b>	1983 bp
<b>Locus ID:</b>	9108
<b>UniProt ID:</b>	<a href="#">Q9Y216</a>
<b>Cytogenetics:</b>	8p22
<b>Protein Families:</b>	Phosphatase
<b>Protein Pathways:</b>	Fructose and mannose metabolism, Metabolic pathways, Riboflavin metabolism, Thiamine metabolism
<b>MW:</b>	75.8 kDa
<b>Gene Summary:</b>	This gene encodes a member of the myotubularin family of tyrosine/dual-specificity phosphatases. The encoded protein is characterized by four distinct domains that are conserved among all members of the myotubularin family: the glucosyltransferase, Rab-like GTPase activator and myotubularins domain, the Rac-induced recruitment domain, the protein tyrosine phosphatases and dual-specificity phosphatases domain and the suppressor of variegation 3-9, enhancer-of-zeste, and trithorax interaction domain. This protein dephosphorylates the target substrates phosphatidylinositol 3-phosphate and inositol 1,3-bisphosphate. A pseudogene of this gene is found on chromosome 5. [provided by RefSeq, Mar 2009]

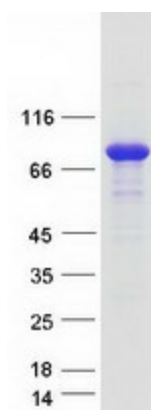
Product images:



Circular map for RC222373



Western blot validation of overexpression lysate (Cat# [LY417811]) using anti-DDK antibody (Cat# [TA50011-100]). Left: Cell lysates from untransfected HEK293T cells; Right: Cell lysates from HEK293T cells transfected with RC222373 using transfection reagent MegaTran 2.0 (Cat# [TT210002]).



Coomassie blue staining of purified MTMR7 protein (Cat# [TP322373]). The protein was produced from HEK293T cells transfected with MTMR7 cDNA clone (Cat# RC222373) using MegaTran 2.0 (Cat# [TT210002]).