

Product datasheet for **RC222366**

ZNF596 (NM_001042415) Human Tagged ORF Clone

Product data:

Product Type:	Expression Plasmids
Product Name:	ZNF596 (NM_001042415) Human Tagged ORF Clone
Tag:	Myc-DDK
Symbol:	ZNF596
Mammalian Cell Selection:	Neomycin
Vector:	pCMV6-Entry (PS100001)
E. coli Selection:	Kanamycin (25 ug/mL)



[View online »](#)

ORF Nucleotide Sequence:

>RC222366 ORF sequence
 Red=Cloning site Blue=ORF Green=Tags(s)

TTTTGTAATACGACTCACTATAGGGCGGCCGGAATTCGTCGACTGGATCCGGTACCGAGGAGATCTGCC
 GCC**CGCATCGCC**

ATGCCATCACCGATTCCATGACCTTCGAGGATATCATTGTAGACTTCACTCAAGAAGAGTGGCCCTGC
 TGGACACATCCCAGAGAAAGCTGTTTCAAGATGTGATGTTGGAGAACATCAGTCATCTGGTCTCTATTGG
 CAAACAGCTCTGCAAATCAGTTGTGCTTTCCCAATTGGAGCAAGTAGAGAACTTCAACACAAAGAATA
 AGCTTACTGCAAGGTAGAGAAGTTGGCATTAAACATCAAGAGATACCATTATTATCATATCTATCAGA
 AGGGCAGCTCCACCATCAGCACAATGAGATCTCACTCAAGAGGATCCTTTTCTATGCAATGACTTAGG
 AGAAGATTTCACTCAACATATAGCATTGACTCAAAATGTGATTACCTACATGAGAACGAAACACTTTGTA
 AGCAAAAAGTTTGGGAAATCTCAGTGACTGGTTATCCTTTAATCAACACAAGGAAATTCACACCAAT
 GTAATCATATGGAAGTCATCTATTTGATTATGCCTTTATCCAAAACCTGCCCCTAGACCACACAGTGT
 GACTCACACTAGAGAGATAACATTGGAATGTCGTGTGTGGGAAAACCTTAGCAAAAATCTAATCTT
 AGGCGACATGAGATGATTCACACTGGAGAGAAACCACACGGATGTCATCTATGTGGGAAAGCCTTACTC
 ATTGCTCTGATCTTCGAAAACATGAGAGAACTCACTGGAGAGAAGCCATATGGATGTCATCTATGTGG
 GAAAGCCTTCAGTAAAAGTTCTAACCTTAGACGACATGAGATGATTCACACTAGAGAAAAAGCACAGATA
 TGCCATCTATGTGGGAAAGCCTTCACTCATTGCTCTGACCTTAGAAAACATGAGAGAACTCACTTAGGAG
 AATAACCATATGGATGTCCTATGTGGGAAGGCTTTCAGTAAATGTTCTTACCTTAGACAAACATGAAAG
 AACTCACAAATGGAGAGAAACCATATGAATGTCTATGTGGAAAAGCCTTCTCTATTGTTCTCACCTT
 AGACAACATGAGCGAAGTCACAATGGAGAGAAACCACATGGATGTCATCTATGTGGGAAAGCATTCACTG
 AATCTTCTGTGCTTAAACGACATGAGAAATTCACACTGGAGAGAAACCATATGAGTGCCATGATGTGG
 GAAAGCCTTCACTGAATCTTCTGACCTCAGACGACATGAGAGAACTCACACTGGAGAAAAACCATATGAA
 TGCCATCTATGCGGAAAAGCCTTCAATCACTCTTCTGTCCTTAGACGACATGAGAGAACTCACACTGGAG
 AGAAACCATATGAATGCAATATATGTGGTAAAGCCTTCAATAGAAGTTACAACCTTAGACTTCATAGAAG
 AGTTCACACTGGAGAGAAACCATATGTATGTCCTCTATGTGGGAAAGCCTTAGTAAATTTTTAACCTT
 AGACAACATGAGAGAACTCACACTAAAAAGCAATGAATATG

ACGCGTACGCGGCCGCTCGAGCAGAAACTCATCTCAGAAGAGGATCTGGCAGCAAATGATATCTGGATT
 ACAAGGATGACGACGATAAGGTTTAA

Protein Sequence:

>RC222366 protein sequence
 Red=Cloning site Green=Tags(s)

MPSPDSMTFEDIIVDFTQEEWALLDTSQRKLFQDVMLENISHLVSIGKQLCKSVVLSQLEQVEKLSQRI
 SLLQGREVGIKHQEIPFIHHIYQKGTSTISTMRSHTQEDPFLCNDLGEDFTQHIALTQNVITYMRTKHFV
 SKKFGKIFSDWLSFNQHKIEHTKCKSYGSHLFDYAFIQNSALRPHSVHTREITLECRVCGKTFSKNSNL
 RRHEMIHTGEKPHGCHLCGKAFTHCSDLRKHERHTHTGEKPYGCHLCGKAFSKSSNLRRHEMIHTREKAQI
 CHLCGKAFTHCSDLRKHERHTLGDOPYGCLLCGKAFSKCSYLRQHERTHNGEKPYEHLCHGKAFSHCSHL
 RQHERSHNGEKPHGCHLCGKAFTESSVLKRHERIHTGEKPYECHVCGKAFTESSDLRRHERHTHTGEKPYE
 CHLCGKAFNHSSVLRHERHTHTGEKPYECNICGKAFNRSYNFRLHRRVHTGEKPYVCPKAFKSKFFNL
 RQHERHTKKAMNM

TRTRPLEQKLISEEDLAANDILDYKDDDDKV

Chromatograms:

https://cdn.origene.com/chromatograms/mk6196_d01.zip

Restriction Sites:

Sgfl-MluI

Cloning Scheme:


ACCN: NM_001042415

ORF Size: 1512 bp

OTI Disclaimer: The molecular sequence of this clone aligns with the gene accession number as a point of reference only. However, individual transcript sequences of the same gene can differ through naturally occurring variations (e.g. polymorphisms), each with its own valid existence. This clone is substantially in agreement with the reference, but a complete review of all prevailing variants is recommended prior to use. [More info](#)

OTI Annotation: This clone was engineered to express the complete ORF with an expression tag. Expression varies depending on the nature of the gene.

Components: The ORF clone is ion-exchange column purified and shipped in a 2D barcoded Matrix tube containing 10ug of transfection-ready, dried plasmid DNA (reconstitute with 100 ul of water).

Reconstitution Method:

1. Centrifuge at 5,000xg for 5min.
2. Carefully open the tube and add 100ul of sterile water to dissolve the DNA.
3. Close the tube and incubate for 10 minutes at room temperature.
4. Briefly vortex the tube and then do a quick spin (less than 5000xg) to concentrate the liquid at the bottom.
5. Store the suspended plasmid at -20°C. The DNA is stable for at least one year from date of shipping when stored at -20°C.

RefSeq: [NM_001042415.3](#)

RefSeq Size: 2730 bp

RefSeq ORF: 1515 bp

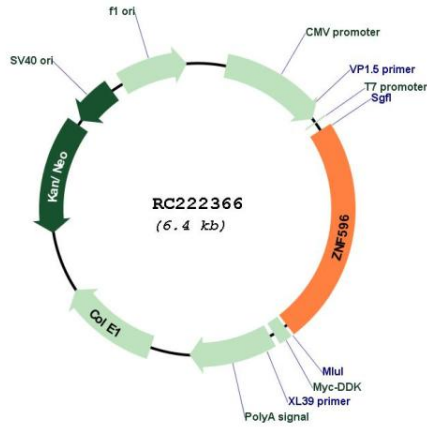
Locus ID: 169270

UniProt ID: [Q8TC21](#)

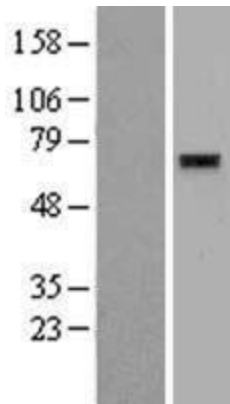
Cytogenetics: 8p23.3

Protein Families: Druggable Genome, Transcription Factors
MW: 58.5 kDa
Gene Summary: May be involved in transcriptional regulation.[UniProtKB/Swiss-Prot Function]

Product images:



Circular map for RC222366



Western blot validation of overexpression lysate (Cat# [LY420889]) using anti-DDK antibody (Cat# [TA50011-100]). Left: Cell lysates from untransfected HEK293T cells; Right: Cell lysates from HEK293T cells transfected with RC222366 using transfection reagent MegaTran 2.0 (Cat# [TT210002]).