

## Product datasheet for **RC222356**

### GPR152 (NM\_206997) Human Tagged ORF Clone

#### Product data:

Product Type:	Expression Plasmids
Product Name:	GPR152 (NM_206997) Human Tagged ORF Clone
Tag:	Myc-DDK
Symbol:	GPR152
Synonyms:	PGR5
Mammalian Cell Selection:	Neomycin
Vector:	pCMV6-Entry (PS100001)
E. coli Selection:	Kanamycin (25 ug/mL)



[View online »](#)

**ORF Nucleotide Sequence:**

>RC222356 ORF sequence  
 Red=Cloning site Blue=ORF Green=Tags(s)

TTTTGTAATACGACTCACTATAGGGCGGCCGGGAATTCGTCGACTGGATCCGGTACCGAGGAGATCTGCC  
 GCC**CGGATCGCC**

ATGGACACTACCATGGAAGCTGACCTGGGTGCCACTGGCCACAGGCCCGCACAGAGCTTGATGATGAGG  
 ACTCTACCCCAAGGTGGCTGGGACACGGTCTTCTGGTGGCCCTGCTGCTCCTGGGCTGCCAGCCAA  
 TGGGTTGATGGCGTGGCTGGCCGGCTCCAGGCCCGGCATGGAGCTGGCACGCGTCTGGCGCTGCTCCTG  
 CTCAGCCTGGCCCTCTGACTTCTTGTCTGGCAGCAGCGCCCTCCAGATCCTAGAGATCCGGCATG  
 GGGGACACTGGCCGCTGGGGACAGCTGCCTGCCGTTCTACTACTTCTATGGGGCGTGTCTACTCCTC  
 CGGCCTTCTGCTGGCCGCCCTCAGCCTCGACCCTGCCTGCTGGCGCTGTGCCACACTGGTACCT  
 GGGCACCGCCAGTCCGCTGCCCTCTGGGTCTGCGCCGGTGTCTGGGTGCTGGCCACACTTTCAGCG  
 TGCCCTGGCTGGTCTTCCCGAGGCTGCCGTCTGGTGTACGACCTGGTATCTGCCTGGACTTCTGGGA  
 CAGCGAGGAGCTGTCGCTGAGGATGCTGGAGGTCTGGGGGGCTTCTGCCTTCTCCTGCTGCTGCTC  
 TGCCACGTGCTACCCAGGCCACAGCCTGTGCGACCTGCCACCGCAACAGCAGCCCGCAGCCTGCCGGG  
 GCTTCCGCCGTGTGGCCAGGACCATTCTGTGAGCCTATGTGGTCTGAGGCTGCCCTACCAGCTGGCCCA  
 GCTGCTCTACCTGGCCTTCTGTGGGACGTCTACTCTGGCTACCTGCTCTGGGAGGCCCTGGTCTACTCC  
 GACTACCTGATCCTACTCAACAGCTGCCTCAGCCCTTCTCTGCCTCATGGCCAGTGCCGACCTCCGGA  
 CCCTGTGCGCTCCGTGCTCTCGTCTTTCGCGGACGTCTCTGCGAGGAGCGGCCGGCAGCTTACAGCC  
 CACTGAGCCACAGACCAGCTAGATTCTGAGGGTCCAACCTCTGCCAGAGCCGATGGCAGAGGCCAGTCA  
 CAGATGGATCCTGTGGCCAGCCTCAGGTGAACCCACACTCCAGCCACGATCGGATCCACAGCTCAGC  
 CACAGCTGAACCCTACGGCCACGCCACAGTCGGATCCCACAGCCAGCCACAGCTGAACCTCATGGCCCA  
 GCCACAGTCAGATTCTGTGGCCACGCCACAGGCAGACACTAACGTCCAGACCCCTGCACCTGCTGCCAGT  
 TCTGTGCCAGTCCCTGTGATGAAGCTTCCCAACCCATCCTCGCATCTACCCAGGGGCCCTTGAGG  
 ACCCAGCCACACCTCCTGCCTCTGAAGGAGAAAGCCCGCAGCAGCAGCCCGCCAGAGGCGGCCCGGGCGC  
 AGGCCCCAGC

AG**CGGACCG**ACGCGTACGCGGCCGCTCGAGCAGAAACTCATCTCAGAAGAGGATCTGGCAGCAAATGATATCC  
 TGGATTACAAGGATGACGACGATAAGGTTAA

**Protein Sequence:**

>RC222356 protein sequence  
 Red=Cloning site Green=Tags(s)

MDTTMEADLGATGHRPRTELDDEDSYPQGGWDTVFLVALLLLGLPANGLMAWLAGSQARHGAGTRLALLL  
 LSLALSDFLFLAAAAFQILEIRHGGHWPLGTAACRFYYFLWGVSYSSGLFLLAALSLDRCLLALCPHWYP  
 GHRPVRLPLWVCAGVWVLAFLSVPWLVFPEAAVWYDLVICLDFWSEELSLRMLLEVGGFLPFLLLL  
 CHVLTQATACRTCHRQQQPAACRGFARVARTILSAYVVLRLPYQLAQLLYLAFLWDVYSGYLLWEALVYS  
 DYLLILLNSCLSPFLCLMASADLRTLRSVLSFFAAALCEERPFSFTPEPQTQLDSEGPTLPEPMAEAQS  
 QMDPVAQPQVNPTLQPRSDPTAQPLNPTAQPSDPTAQPLNLMAQPQSDSVAQPQADTNVQTPAPAAS  
 SVPSPCDEASPTPSSHPTGALEDPATPPASEGESPSSTPPEAAPGAGPT

**SGP**TRTRPLEQKLISEEDLAANDILDYKDDDDKV

**Chromatograms:**

[https://cdn.origene.com/chromatograms/mk6621\\_f06.zip](https://cdn.origene.com/chromatograms/mk6621_f06.zip)

**Restriction Sites:**

Sgfl-RsrII

**Cloning Scheme:**


**ACCN:** NM\_206997

**ORF Size:** 1410 bp

**OTI Disclaimer:** The molecular sequence of this clone aligns with the gene accession number as a point of reference only. However, individual transcript sequences of the same gene can differ through naturally occurring variations (e.g. polymorphisms), each with its own valid existence. This clone is substantially in agreement with the reference, but a complete review of all prevailing variants is recommended prior to use. [More info](#)

**OTI Annotation:** This clone was engineered to express the complete ORF with an expression tag. Expression varies depending on the nature of the gene.

**Components:** The ORF clone is ion-exchange column purified and shipped in a 2D barcoded Matrix tube containing 10ug of transfection-ready, dried plasmid DNA (reconstitute with 100 ul of water).

**Reconstitution Method:**

1. Centrifuge at 5,000xg for 5min.
2. Carefully open the tube and add 100ul of sterile water to dissolve the DNA.
3. Close the tube and incubate for 10 minutes at room temperature.
4. Briefly vortex the tube and then do a quick spin (less than 5000xg) to concentrate the liquid at the bottom.
5. Store the suspended plasmid at -20°C. The DNA is stable for at least one year from date of shipping when stored at -20°C.

**RefSeq:** [NM\\_206997.1](#), [NP\\_996880.1](#)

**RefSeq Size:** 1429 bp

**RefSeq ORF:** 1413 bp

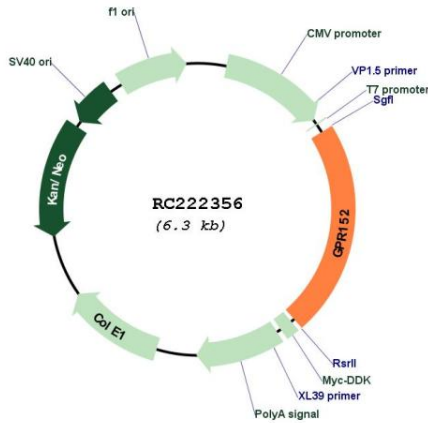
**Locus ID:** 390212

**UniProt ID:** [Q8TDT2](#)

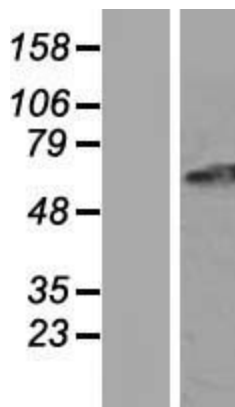
**Cytogenetics:** 11q13.2

**Protein Families:** Druggable Genome, Transmembrane  
**MW:** 51 kDa  
**Gene Summary:** Orphan receptor.[UniProtKB/Swiss-Prot Function]

**Product images:**



Circular map for RC222356



Western blot validation of overexpression lysate (Cat# [LY404125]) using anti-DDK antibody (Cat# [TA50011-100]). Left: Cell lysates from untransfected HEK293T cells; Right: Cell lysates from HEK293T cells transfected with RC222356 using transfection reagent MegaTran 2.0 (Cat# [TT210002]).