

Product datasheet for **RC222353**

POTED (NM_174981) Human Tagged ORF Clone

Product data:

Product Type:	Expression Plasmids
Product Name:	POTED (NM_174981) Human Tagged ORF Clone
Tag:	Myc-DDK
Symbol:	POTED
Synonyms:	A26B3; ANKRD21; CT104.1; POTE; POTE-21; POTE21
Mammalian Cell Selection:	Neomycin
Vector:	pCMV6-Entry (PS100001)
E. coli Selection:	Kanamycin (25 ug/mL)



[View online »](#)

ORF Nucleotide Sequence:

>RC222353 representing NM_174981
 Red=Cloning site Blue=ORF Green=Tags(s)

TTTTGTAATACGACTCACTATAGGGCGGCCGGGAATTCGTCGACTGGATCCGGTACCGAGGAGATCTGCC
 GCC**CGGATCGCC**

ATGGTGGCTGAGTTTGTCAATGCCACTGCCTCTACTGTGAAGAAGCCATTTGATCTCAGGAGCAAGA
 TGGGCAAGTGGTCCACCACCGCTTCCCCTGCTGCAGGGGAGCGCAAGAGCAACATGGGCACTTCTGG
 AGACCACGACGACTCCTTTATGAAGATGCTCAGGAGCAAGATGGGCAAGTGTGCCGCACTGCTCCCC
 TGCTGCAGGGGAGCGGCACGAGCAACGTGGGCACTTCTGGAGACCATGAAAACCTTTTATGAAGATGC
 TCAGGAGCAAGATGGGCAAGTGGTGTCTACTGCTTCCCCTGCTGCAGGGGAGCAGCAAGAGCAACGT
 GGGCGCTTGGGGAGACTACGACCACAGCGCTTCATGGAGCCGAGGTACCACGTCCGTCGAGAAGATCTG
 GACAAGCTCCACAGAGCTGCCTGGTGGGTAAAGTCCCCAGAAAGGATCTCATCGTCATGCTCAGGGACA
 CTGACATGAACAAGAGGGACAAGGAAAAGAGGACTGCTCTACATTTGGCCTCTGCCAATGGAATTCAGA
 AGTAGTACAACCTCTGCTGGACAGACGATGCACTTAATGTCTTGACAACAAAAAAGGACAGCTCTG
 ATAAAGGCCATACAATGCCAGGAAGATGAATGTGTGTTAATGTTGCTGGAACATGGCGCTGATCGAATA
 TTCCAGATGAGTATGGAATACCGCTCTACACTATGCTATCTACAATGAAGATAAATTAATGGCCAAAGC
 ACTGCTCTTATATGGTGTGATATTGAATCAAAAAACAAGTGTGGCCTCACACCCTTTTCTTGGCGTA
 CATGAACAAAAACAGCAAGTGGTGAATTTTTAATCAAGAAAAAGCTAATTTAATGTACTTGTATAGAT
 ATGGAAGAAGTCCCTCATACTTGTGTATGTTGTGGATCAGCAAGTATAGTCAATCTTCTACTTGAGCA
 AAATGTTGATGTATCTTCAAGATCTATCTGGACAGACGGCCAGAGAGTATGCTGTTTCTAGTCATCAT
 CATGTAATTTGTGAATTACTTTCTGACTATAAAGAAAAACAGATGCTAAAAATCTCTTCTGAAAACAGCA
 ATCCAGAACAAGACTTAAAGCTGACATCAGAGGAAGAGTCAAAAGGCTTAAAGTCAGTAAAAATAGCCA
 GCCAGAGAAAATGTCTCAAGAACCAGAAAATAAAT AAGGACTGTGATAGAGAGGTTGAAGAAGAAAATAAAG
 AAGCATGGAAGTAACTCTGTGGATTACCAAAAACTGACTAATGGTGCCAGTGTGGCAATGGTGTATG
 ATGGATTAATCCACAAAGGAGGAGCAGAAAACCTGAAAATCAGCAATTTCTGACTGAGAATGAAGA
 GTATCACAGTGACGAACAAAATGATACCCGAAACAACCTTCTGAAGAACAGAACTGGAATATCACAA
 GATGAGATTCTGACTAATAAACAAAAGCAGATAGAAGTGGCTGAACAGAAAATGAATTTCTGAGCTTCTC
 TTAGTCATAAGAAAGAAGAAGATCTCTTGGCTGAAAACAGCGTGTTCAGGAAGAATTTGCCGTGCTAAG
 ACTGGAAGTATGAAACAAAACATCAGAACAGCTAAGGAAAAATAAATTTTGGAGGAAATTGAAAGT
 GTGAAAGAAAAGACTGATAAACTTCTAAGGGCTATGCAATTGAATGAAGAAGCATTAAACGAAAACCAATA
 TT

ACGCGTACGCGGCCGCTCGAGCAGAAACTCATCTCAGAAGAGGATCTGGCAGCAAATGATATCCTGGATT
 ACAAGGATGACGACGATAAGGTTTAA

Protein Sequence:

>RC222353 representing NM_174981
 Red=Cloning site Green=Tags(s)

MVAEVCSPMTASTVKKPFDLRSKMGKWCHHRFPCCRGSGKSNMGTSGDHDDSFMKMLRSKMGKCCRHCFF
 CCRGSGTSNVGTSGDHENSFMKMLRSKMGKWCCHCFPCCRGSSKSNVGAWGDYDHSAFMEPRYHVRREDL
 DKLHRAAWWGKVPKDLIVMLRDTDMNKRDKERTALHLASANGNSEVVQLLLDRRCQLNVLDNKKRTAL
 IKAIQCQEDECVLMLEHGADRNPDEYGNALHYAIYNEDKLMAKALLLYGADIESKNKCGLTPLLLGV
 HEQKQVVKFLIKKKANLNVLDRYGRTALILAVCCGSASIVNLLLEQNVDVSSQDL SGQTAREYAVSSH
 HVICELLSDYKEKQMLKISSSENSPEQDLKLTSEEE SQRLKVSSENSQPEKMSQEPEINKDCDREVEEIEK
 KHGSPVGLPENLTNGASAGNGDDGLIPQRRSRKPENQFPDTEENEEYHSDEQNDTRKQLSEEQNTGISQ
 DEILTNKQKQIEVAEQMNSLSL SHKKEEDLLRENSVLQEEIAVLRLELDETKHQNLRENKILEEIES
 VKEKTDKLLRAMQLNEEALTKTNI

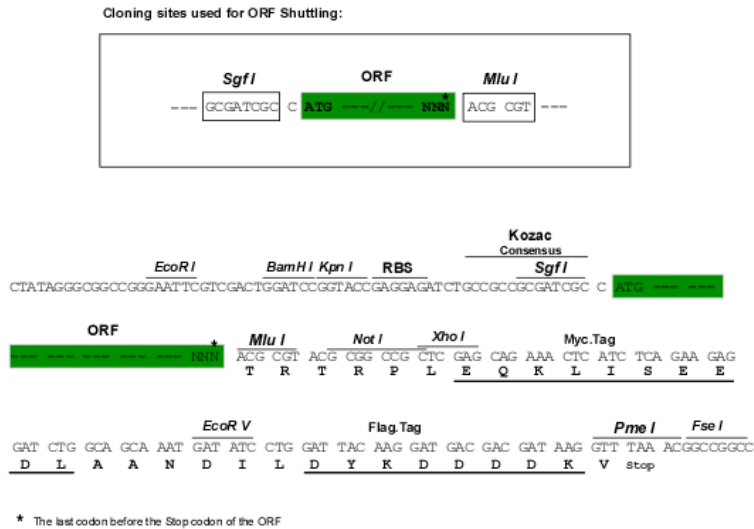
TRTRPLEQKLISEEDLAANDILDYKDDDDKV

Chromatograms:

https://cdn.origene.com/chromatograms/mk8041_c06.zip

Restriction Sites: SgfI-MluI

Cloning Scheme:



ACCN: NM_174981

ORF Size: 1752 bp

OTI Disclaimer: The molecular sequence of this clone aligns with the gene accession number as a point of reference only. However, individual transcript sequences of the same gene can differ through naturally occurring variations (e.g. polymorphisms), each with its own valid existence. This clone is substantially in agreement with the reference, but a complete review of all prevailing variants is recommended prior to use. [More info](#)

OTI Annotation: This clone was engineered to express the complete ORF with an expression tag. Expression varies depending on the nature of the gene.

Components: The ORF clone is ion-exchange column purified and shipped in a 2D barcoded Matrix tube containing 10ug of transfection-ready, dried plasmid DNA (reconstitute with 100 ul of water).

- Reconstitution Method:
1. Centrifuge at 5,000xg for 5min.
 2. Carefully open the tube and add 100ul of sterile water to dissolve the DNA.
 3. Close the tube and incubate for 10 minutes at room temperature.
 4. Briefly vortex the tube and then do a quick spin (less than 5000xg) to concentrate the liquid at the bottom.
 5. Store the suspended plasmid at -20°C. The DNA is stable for at least one year from date of shipping when stored at -20°C.

RefSeq: [NM_174981.2](#), [NP_778146.1](#)

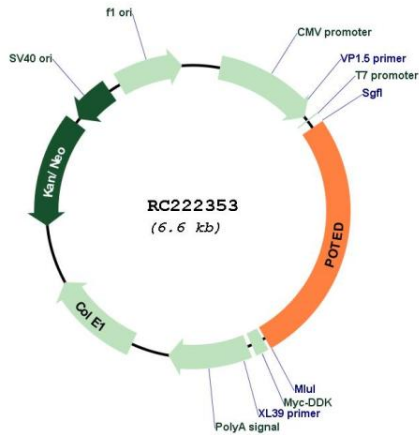
RefSeq Size: 1826 bp

RefSeq ORF: 1755 bp

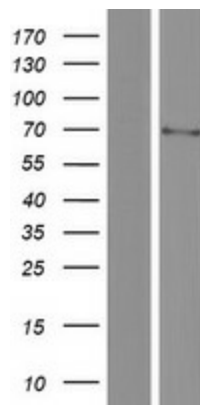
Locus ID: 317754

UniProt ID: [Q86YR6](#)
 Cytogenetics: 21q11.2
 MW: 66.2 kDa

Product images:



Circular map for RC222353



Western blot validation of overexpression lysate (Cat# [LY406370]) using anti-DDK antibody (Cat# [TA50011-100]). Left: Cell lysates from untransfected HEK293T cells; Right: Cell lysates from HEK293T cells transfected with RC222353 using transfection reagent MegaTran 2.0 (Cat# [TT210002]).