

Product datasheet for **RC222349**

TNS4 (NM_032865) Human Tagged ORF Clone

Product data:

Product Type:	Expression Plasmids
Product Name:	TNS4 (NM_032865) Human Tagged ORF Clone
Tag:	Myc-DDK
Symbol:	TNS4
Synonyms:	CTEN; PP14434
Mammalian Cell Selection:	Neomycin
Vector:	pCMV6-Entry (PS100001)
E. coli Selection:	Kanamycin (25 ug/mL)



[View online »](#)

ORF Nucleotide Sequence:

>RC222349 representing NM_032865
 Red=Cloning site Blue=ORF Green=Tags(s)

TTTTGTAATACGACTCACTATAGGGCGGCCGGAATTCGTCGACTGGATCCGGTACCGAGGAGATCTGCC
 GCC**CGGATCGCC**

ATGTCCCAGGTGATGTCCAGCCACTGCTGGCAGGAGCCATGCTGTGAGCTTGGCGCCTTGTGATGAGC
 CCAGGAGACCCTGCACCCAGCACCCAGCCCCAGCCTGCCACCCAGTGTCTTACTACACCACGGAAGG
 CTGGGGAGCCAGGCCCTGATGGCCCCCTGCCCTGCATGGGGCCCCCTGGCCGACTCCAGCAAGCCCCA
 CAGGTGGAGGCCAAAGCCACCTGCTTCCCTGCCCTCCCCTGGTGAGAAGGCCTTGGGGACCCAGAGGACC
 TTGACTCTACATTGACTTCTCACTGGAGAGCCTCAATCAGATGATCCTGGAAGTGGACCCACCTTCCA
 GCTGCTTCCCCAGGGACTGGGGCTCCCAGGCTGAGCTGGCCAGAGCACCATGTCAATGAGAAAGAAG
 GAGGAATCTGAAGCCTTGGACATAAAGTACATCGAGGTGACCTCCGCCAGATCAAGGTGCCACGATGGCC
 CCCAGCACTGCTCCAGCCCTCTGTCAACCCGCCCTTCGGCTCCCTTCGAGTGGTGGCCTCTCTCTTTC
 CAGAGACGTCCTCCGAGAGACACGAAGCAGCAGTGAGAGCCTCATCTTCTCTGGGAACCAGGGCAGGGGG
 CACCAGCGCCCTCTGCCCCCTCAGAGGGTCTCTCCCCTCGACCCCAAAATCCCCCAGCATCTCAATCC
 CTTGCATGGGGAGCAAGGCCTCGAGCCCCATGGTTTGGGCTCCCCGCTGGTGGCTTCTCCAAGACTGGA
 GAAGCGGCTGGGAGGCCTGGCCCCACAGCGGGCAGCAGGATCTCTGTGCTGTCAGCCAGCCAGTGTCT
 GATGTCAGCTATATGTTTGAAGCAGCCAGTCCCTCCTGCACTCCAGCAACTCCAGCCATCAGTCATCTT
 CCAGATCCTTGGAAAAGTCCAGCCAACCTTCTCCTCAGCCTCCACAGCCTTGGCTCAGTGTCCCTGTGATC
 AAGACCCAGTGACTTCCAGGCTCCCAGAAAACCCACCTAACCATGGGCCAACCCAGAACACCCCACTCT
 CCACCAGTGGCCAAAGAACATGCCAGCAGCTGCCCCCATCCATCACTCACTCCATGGTGGACATAACCA
 TTGTGCTGATCAACGGCTGCCAGAACCCAGGGTCTTCTCCACCCAGCGGACCCAGGACCCAGAACTC
 CGTTCAACCTGGAGCTGCTTCTCCAGCAACCCCTGTCCAGCCACCAGGAGCAACAGCCAGACCCTGTCA
 GATGCCCCCTTTACCACATGCCAGAGGGTCCCAGGAGCAGTGCAGCCACCATGAAGTTCGTGATGG
 ACACATCTAAATACTGGTTAAGCCAAACATCACCCGAGAGCAAGCAATCGAGCTGCTGAGGAAGGAGGA
 GCCAGGGGCTTTTGTACATAAGGGACAGCTTTCATACCGAGGCTCCTTCGGCCTGGCCCTGAAGGTGCAG
 GAGGTTCCCGCTGCTCAGAGTCGACCAGGTGAGGACAGCAATGACCTCATCCGACACTTCTCATCG
 AGTCGTCTGCCAAAGGAGTGCATCTCAAAGGAGCAGATGAGGAGCCCTACTTTGGGAGCCTCTCTGCCTT
 CGTGTGCCAGCATTCCATCATGGCCCTGGCCCTGCCCTGCAAACCTCACCATCCCACAGAGAACTGGGA
 GGTGCAGATGGGGCTCGGACTCTACAGACAGCCAGCCTCCTGCCAGAAGAAATCTGCGGGCTGCCACA
 CCCTGTACCTGAGCTCAGTGAGCGTGGAGACCCTGACTGGAGCCCTGGCCGTGCAGAAAGCCATCTCCAC
 CACCTTTGAGAGGGACATCCTCCCCACGCCACCGTGGTCCACTTCAAAGTACAGAGCAGGGCATCACT
 CTGACTGATGTCCAGAGGAAGGTGTTTTTCCGGCGCCATTACCCACTCACCACCTCCGCTTCTGTGGTA
 TGGACCTGAGCAACGGAAGTGGCAGAAGTACTGCAAACCTCCTGGATCTTTGGGTTTGTGGCCAAAGAG
 CCAGACAGAGCCTCAGGAGAAGTATGCCACCTTTTGGGAGTATGACATGGTCCAGCCAGCCTCGCAG
 GTCATCGGCTGGTACTGCTCTGCTGCAGGACGCAGAAAGGATG

ACGCGTACGCGGCCGCTCGAGCAGAACTCATCTCAGAAGAGGATCTGGCAGCAAATGATATCCTGGATT
 ACAAGGATGACGACGATAAGGTTTAA

Protein Sequence: >RC222349 representing NM_032865
Red=Cloning site Green=Tags(s)

```
MSQVMSSPLLAGGHAVSLAPCDEPRRTLHPAPSPSLPPQCSYYTTEGWGAQALMAPVPCMGGPPGRLQQAP
QVEAKATCFLPSPGKALGTPEDLDSYIDFSLESLNQMILELDPFQLLPPTGGGSAELAQSTMSMRKK
EESALDIKYIEVTSARSRCHDGPQHCCSSPSVTPPFGSLRSGGLLLSRDVPRETRSSSESLIFSGNQGRG
HQRPLPPSEGLSPRPPNSPISIPCMGSKASSPHGLGSPLVASPRLEKRLGGLAPQRGSRISVLSASPVS
DVSYMFSSQSLHSSNSHQSSSRSLSPANSSSLHSLGSVSLCTRP SDFQAPRNPTLTMGQPRTPHS
PPLAKEHASSCPPSITNSMVDIPIVLINGCPEPGSSPPQRTPGHQNSVQGAASPNPCPATRSNSQTLS
DAPFTTCPEGPARDMQPTMKFVMDTSKYWFKPNITREQAIELLRKEEPGAFVIRDSSSYRGSFGLALKVQ
EVPASAQSRPGE DSNLIRHFLIESSAKGVHLKGADEEYPFGSLSAFVCQHSIMALALPCKLTIPQRELG
GADGASDSTDSPASCQKKSAGCHTLYLSSVSVETLTGALAVQKAISTTFERDILPTPTVVHFVKVTEQGIT
LTDVQRKVFRRHYPLTLRF CGMDPEQRKWQKYCKPSWIFGFVAKSQTEPQENVCHLFAEYDMVQPASQ
VIGLVTALLQDAERM
```

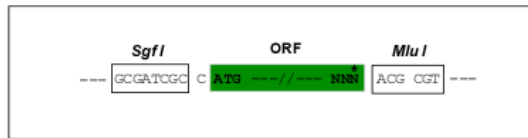
TRTRPLEQKLISEEDLAANDILDYKDDDDKV

Chromatograms: https://cdn.origene.com/chromatograms/mk8041_c07.zip

Restriction Sites: SgfI-MluI

Cloning Scheme:

Cloning sites used for ORF Shuttling:



* The last codon before the Stop codon of the ORF

ACCN: NM_032865

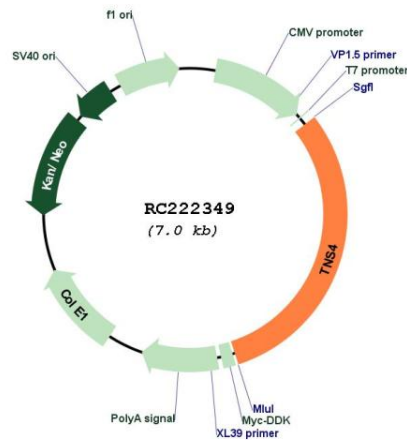
ORF Size: 2145 bp

OTI Disclaimer: The molecular sequence of this clone aligns with the gene accession number as a point of reference only. However, individual transcript sequences of the same gene can differ through naturally occurring variations (e.g. polymorphisms), each with its own valid existence. This clone is substantially in agreement with the reference, but a complete review of all prevailing variants is recommended prior to use. [More info](#)

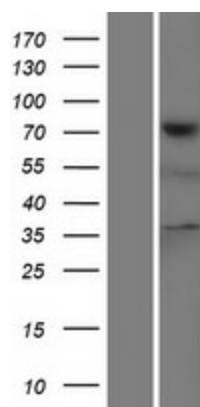
OTI Annotation: This clone was engineered to express the complete ORF with an expression tag. Expression varies depending on the nature of the gene.

Components:	The ORF clone is ion-exchange column purified and shipped in a 2D barcoded Matrix tube containing 10ug of transfection-ready, dried plasmid DNA (reconstitute with 100 ul of water).
Reconstitution Method:	<ol style="list-style-type: none"> 1. Centrifuge at 5,000xg for 5min. 2. Carefully open the tube and add 100ul of sterile water to dissolve the DNA. 3. Close the tube and incubate for 10 minutes at room temperature. 4. Briefly vortex the tube and then do a quick spin (less than 5000xg) to concentrate the liquid at the bottom. 5. Store the suspended plasmid at -20°C. The DNA is stable for at least one year from date of shipping when stored at -20°C.
RefSeq:	<u>NM_032865.6</u>
RefSeq Size:	4090 bp
RefSeq ORF:	2148 bp
Locus ID:	84951
UniProt ID:	<u>Q8IZW8</u>
Cytogenetics:	17q21.2
Domains:	SH2, PID
MW:	76.6 kDa
Gene Summary:	May be involved in cell migration, cartilage development and in linking signal transduction pathways to the cytoskeleton (By similarity). May promote apoptosis, via its cleavage by caspase-3.[UniProtKB/Swiss-Prot Function]

Product images:



Circular map for RC222349



Western blot validation of overexpression lysate (Cat# [LY409898]) using anti-DDK antibody (Cat# [TA50011-100]). Left: Cell lysates from untransfected HEK293T cells; Right: Cell lysates from HEK293T cells transfected with RC222349 using transfection reagent MegaTran 2.0 (Cat# [TT210002]).