

Product datasheet for **RC222348**

keratin 40 (KRT40) (NM_182497) Human Tagged ORF Clone

Product data:

Product Type:	Expression Plasmids
Product Name:	keratin 40 (KRT40) (NM_182497) Human Tagged ORF Clone
Tag:	Myc-DDK
Symbol:	keratin 40
Synonyms:	CK-40; K40; KA36
Mammalian Cell Selection:	Neomycin
Vector:	pCMV6-Entry (PS100001)
E. coli Selection:	Kanamycin (25 ug/mL)



[View online »](#)

ORF Nucleotide Sequence:

>RC222348 ORF sequence
 Red=Cloning site Blue=ORF Green=Tags(s)

TTTTGTAATACGACTCACTATAGGGCGGCCGGAATTCGTCGACTGGATCCGGTACCGAGGAGATCTGCC
 GCC**CGGATCGCC**

ATGACTTCTGACTGCTCCTCCACACTGCTCCTGAGTCTGTGGCACGGCTTCGGTGTGACACTG
 CCTCAAGCTGCTCCGTGGAAACAGCTTGTCTCCCGGTACCTGTGCTACATCCCGATGTCAGACTCCAAG
 CTTCTATCCAGGTCTCGCGGGCTGACTGGTTGCCTCCTGCCATGCTACTTTACTGGGAGTTGTAATAGT
 CCCTGCTTGGTGGGAACTGTGCCTGGTGTGAGGATGGGGTGTCACTAGCAATGAGAAGGAGACGATGC
 AGTTCCTGAATGACAGACTCGCCAGCTATCTGGAGAAGGTGCGCAGCCTGGAGGAGACCAACGCAGAGCT
 GGAATCCAGGATCCAAGAACAATGTGAACAGGATATCCAATGGTGTGCCGGATTATCAGCGTTACTTC
 AACACCATTGAAGATCTCAACAAAAGATCTTATGCACGAAAGCAGAGAATTCTAGACTTGTGTACAGC
 TTGACAACCTGCAAACCTGGCCACTGATGACTTTAAGTCAAAGTACGAGAGTGAAGTGTCCCTTCGCCAGCT
 GTTAGAGGCTGACATCAGCAGCCTGCATGGGATCCTGGAGAACTGACCCTGTGCAAATCTGATCTGGAG
 GCCCATGTGGAGTCTCTGAAGGAAGATCTCCTTTGCCTTAAGAAAAACCATGAAGAGGAAGTCAACTTGC
 TTCGTGAACAGCTTGGCGACCGCCTCAGTGTGGAGCTGGACACTGCCCCACCCTTGACCTCAACAGGGT
 CCTGGATGAGATGCGCTGTCAAGTGTGAAACGGTCTTGCCAACAATCGCAGAGAAGCTGAAGAATGGTTG
 GCTGTTGAGACAGAAGAGCTGAATCAGCAGCAACTGTCCAGCGCGGAGCAGCTGCAGGGCTGCCAGATGG
 AGATCTTGAAGTGAACGCACAGCCAGTGTCTTGAAATTGAGCTCCAAGCACAGCAAAGCCTGACAGA
 ATCTCTGGAATGCACCGTGGCAGAAACCGAGGCCAGTACAGCTCCAGCTGGCCCAAATTCAGTGTCTG
 ATCGATAACCTGGAGAACCAGCTGGCCGAGATCCGCTGCGACCTGGAGCGACAGAACCAGGAGTACCAGG
 TGCTCCTGGAGTGAAGGCCCGCTGGAGGGTGAAGTCAACACGTACTGGGGCCTGCTGGACAGCGAGGA
 CAGCAGGCTTTCCTGTAGCCCATGTTCCGACCACATGCACCTCGAGCAACACTTGTGAGCCATGCTCAGCC
 TATGTCATCTGACTGTTGAAAACCTGCTGCTTG

ACGCGTACGCGGCCGCTCGAGCAGAAACTCATCTCAGAAGAGGATCTGGCAGCAAATGATATCCTGGATT
 ACAAGGATGACGACGATAAGGTTTAA

Protein Sequence:

>RC222348 protein sequence
 Red=Cloning site Green=Tags(s)

MTSDCSSTHCSPESCGTASGCAPASSCSVETACLPGTCATSRQTPSFLSRSRGLTGCLLPCYFTGSCNS
 PCLVGNCAWCEGDGVFTSNEKETMQFLNDRLASYLEKVRSLLEETNAELESRIQEQCEQDIPMVCPDYQRYF
 NTIEDLQKILCTKAENSRLAVQLDNCKLATDDFKSKYESELSRQLLEADISSLHGILEELTLCKSDLE
 AHVESLKEDLLCLKKNHEEEVNLLREQLGDRLSVELDTAPTLDLNRVLDEMRCQCETVLANNRREAEEWL
 AVQTEELNQQQLSSAEQLQGCQMEILELKRTASALEIELQAQQLTESLECTVAETEAQYSSQLAQIQCL
 IDNLENQLAEIRCDLERQNEQYQVLLDVKARLEGEINTYWGLLDESDSRLSCSPCSTTCTSSNTCEPCSA
 YVICTVENCL

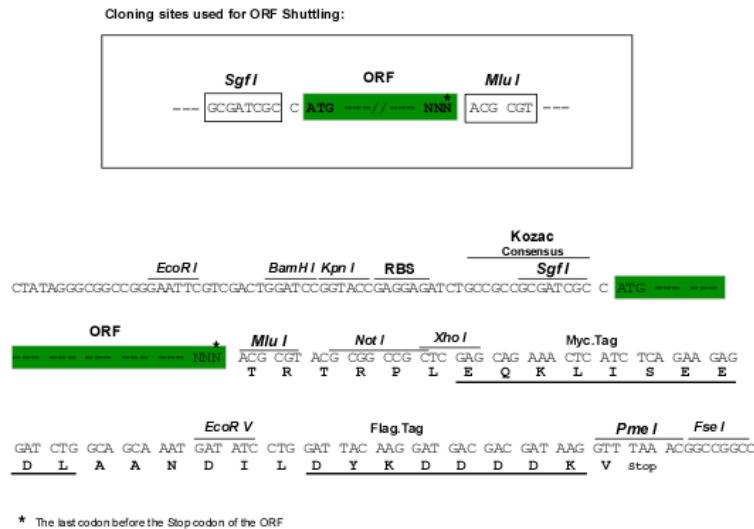
TRTRPLEQKLISEEDLAANDILDYKDDDDKV

Chromatograms:

https://cdn.origene.com/chromatograms/mk6467_d06.zip

Restriction Sites:

SgfI-MluI

Cloning Scheme:


ACCN: NM_182497

ORF Size: 1293 bp

OTI Disclaimer: The molecular sequence of this clone aligns with the gene accession number as a point of reference only. However, individual transcript sequences of the same gene can differ through naturally occurring variations (e.g. polymorphisms), each with its own valid existence. This clone is substantially in agreement with the reference, but a complete review of all prevailing variants is recommended prior to use. [More info](#)

OTI Annotation: This clone was engineered to express the complete ORF with an expression tag. Expression varies depending on the nature of the gene.

Components: The ORF clone is ion-exchange column purified and shipped in a 2D barcoded Matrix tube containing 10ug of transfection-ready, dried plasmid DNA (reconstitute with 100 ul of water).

Reconstitution Method:

1. Centrifuge at 5,000xg for 5min.
2. Carefully open the tube and add 100ul of sterile water to dissolve the DNA.
3. Close the tube and incubate for 10 minutes at room temperature.
4. Briefly vortex the tube and then do a quick spin (less than 5000xg) to concentrate the liquid at the bottom.
5. Store the suspended plasmid at -20°C. The DNA is stable for at least one year from date of shipping when stored at -20°C.

RefSeq: [NM_182497.4](#)

RefSeq Size: 1938 bp

RefSeq ORF: 1296 bp

Locus ID: 125115

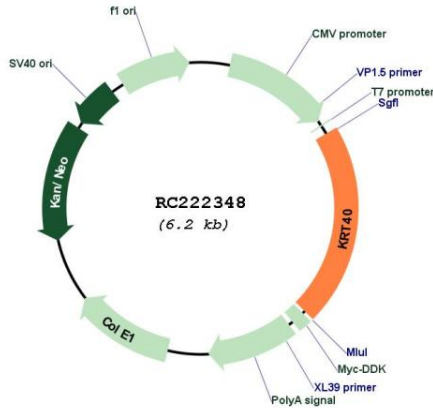
UniProt ID: [Q6A162](#)

Cytogenetics: 17q21.2

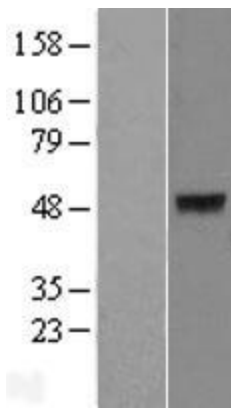
MW: 48.1 kDa

Gene Summary: This gene encodes a member of the type I (acidic) keratin family, which belongs to the superfamily of intermediate filament (IF) proteins. Keratins are heteropolymeric structural proteins which form the intermediate filament. These filaments, along with actin microfilaments and microtubules, compose the cytoskeleton of epithelial cells. The type I keratin genes are clustered in a region of chromosome 17q12-q21. [provided by RefSeq, Jul 2009]

Product images:



Circular map for RC222348



Western blot validation of overexpression lysate (Cat# [LY405517]) using anti-DDK antibody (Cat# [TA50011-100]). Left: Cell lysates from untransfected HEK293T cells; Right: Cell lysates from HEK293T cells transfected with RC222348 using transfection reagent MegaTran 2.0 (Cat# [TT210002]).