

## Product datasheet for **RC222346**

### HLTF (NM\_139048) Human Tagged ORF Clone

#### Product data:

Product Type:	Expression Plasmids
Product Name:	HLTF (NM_139048) Human Tagged ORF Clone
Tag:	Myc-DDK
Symbol:	HLTF
Synonyms:	HIP116; HIP116A; HLTF1; RNF80; SMARCA3; SNF2L3; ZBU1
Mammalian Cell Selection:	Neomycin
Vector:	pCMV6-Entry (PS100001)
E. coli Selection:	Kanamycin (25 ug/mL)
ORF Nucleotide Sequence:	>RC222346 ORF sequence Red=Cloning site Blue=ORF Green=Tags(s)

TTTTGTAATACGACTCACTATAGGGCGGCCGGAATTCGTCGACTGGATCCGGTACCGAGGAGATCTGCC  
GCC**CGATCGCC**

ATGTCCTGGATGTTCAAGAGGGATCCAGTTTGAAGTACTTGCAGACTGTCCAGTATGGAGTTCATGGAA  
ATTTTCCACGCCTCTCATATCCAACCTTTCTTCCACGTTTTGAATCCAAGATGTTATCCCTCCAGATGA  
CTTTCTAACTAGTGATGAAGAAGTAGATTCCGTTTTATTGGAAGTTGAGAGGTCATGTGGTTGGACTA  
CGCTATTACACGGGAGTAGTTAATAATAATGAAATGGTTGCATTACAACGAGATCCTAATAACCCCTATG  
ATAAGAATGCAATTAAGTAAACAATGTGAATGGAAATCAAGTTGGCCATTTAAAGAAAGAGCTTGCAAG  
TGCTTTGGCCTATATCATGGACAACAAATTGGCACAATTTGAAGGGTAGTTCCTTTTGGTGCAAAACAAT  
GCTTTTACCATGCCTCTGCATATGACTTTTTGGGAAAAGAAGAAAATAGAAAAGCGTTTCAGATCAGT  
TGAAGAAACATGGATTTAAATGGGTCCTGCACAAAAAATTTAGGATTCATTTGGAAAGTGGTTGGGG  
CTCTGGAAGAGCTGGACCAAGCTATAGTATGCCAGTGCATGCTGCAGTACAGATGACAACTGAACAGCTT  
AAAACAGAATTTGACAAATGTTTGAAGATTTAAAAGAAGATGATAAAACCCATGAAATGGAACAGCTG  
AGGCTATTGAAACACCACTGCTCCACATCAAAAACAAGCTCTAGCTTGGATGGTGTACCGGAAAAATAG  
CAAAGAACCTCCACCATTCTGGGAACAGCGAAATGACTTATACTATAACAATAACAAATTTTTCTGAG  
AAGGACCGACAGAAAAATGTCATGGAGGAATTTAGCTGATGATGGGTTTGGGTTAAACTCTTACAG  
CCATTGCAGTAATCCTTACCAACTCCATGATGGCAGACCTCTTCTATTGAAAGAGTTAAAAAGAATCT  
ACTGAAGAAGGAATATAATGTTAACGATGACTCTATGAACTTGGAGGAAACAATACCAGTGAAAAGGCA  
GATGGACTAAGCAAAGACGCATCTAGTGTAGTGAACAACCCAGTATTTAGATATCAAGGAGAAGAGTA  
AGTTTCGCATGTCAGAATTGTCTAGCTCCCGCCCCAAAAGAAGAAAAACTGCTGTCCAGTACATAGAAA  
CAGTGATTCAGAGGAAATGAAACAAGTGAATGCCGAGAAAAATGAAAGGCAAACCTGAAAAATGTACAG  
TCTGAACTAAAGGCAGGGCGAAAGGATCTTAAGGTTATAGAAGATGTGCATTTGCATGTGCATTAA  
CTTCATCTGTTCTACAACAAAAAGAAAAATGTTGAAAAAGGGAGCTTGTGCAGTGGAGGGTCAAAGAA  
AACTGATGTTGAGGAGAGACCAAGAACAACACTGATCATCTGTCCGCTTCTGTGTTAAGCAACTGGATT



GACCAGTTGGACAACATATAAAATCAGATGTACACTTGAATTTTTATGTTTATTATGGTCTGATCGTA  
 TTAGAGAACCGGCCTTACTTTCAAAACAGGATATTGTTTTGACTACGTATAATATTTAACTCATGACTA  
 TGGAACTAAAGGAGATAGTCCATTACATAGCATAAGGTGGCTAAGAGTGATCCTGGATGAAGGACATGCC  
 ATACGAAATCAAATGCTCAGCAGACAAAAGCTGTACTTGACTTAGAATCAGAAAGAAGATGGGTTTTGA  
 CAGGTA CTCCAATCCAGAATCTTTAAAGGACTTGTGGTCTCTTCTTTTCTTTTAAAACCTAAACCATT  
 TATTGATAGAGAATGGTGGCATAGAACAATACAGCGTCTGTACAATGGGAGATGAAGGAGGACTTAGG  
 CGTTTACAGTCCCTAATTAATAAATATTACACTTGAAGAACAAGACAAGCAAAATTAAGGAAAACCTG  
 TTTTGGAGTTACCAGAAGCTAAAGTATTTATTCAGCACATTACACTTTCAGATGAAGAGAGAAAGATTTA  
 TCAGTCTGTGAAAAATGAAGGCAGAGCCACTATTGGAAGGTATTTAATGAAGGGACTGTCTGGCACAT  
 TATGCAGATGTCTGGGTCTTTTCTTAGACTGCGGCAAAATTTGTTGCCATACTTACCTTCTTACAAATG  
 CAGTGTCTTCCAATGGCCCTCAGGAAATGATACACCTGAAGAACTGAGAAAGAAGTTAATAAGGAAGAT  
 GAAGTTAATTCTGAGCTCAGGTTAGATGAGGAATGTGCAATTTGCTGGATTCTTTAACAGTCTCTGTG  
 ATAACACATTGTGCACATGTATTTGTAACCCTGTATTTGCCAAGTCATTCAGAATGAGCAGCCACATG  
 CTAATGCCCTTTATGCAGAAATGATATACATGAAGATAATTTATTAGAATGCTCCAGAAGAATTAGC  
 ACGTGACAGTGAGAAAAGTCTGATATGGAATGGACATCCAGTCAAAGATTAATGCGCTAATGCACGCA  
 TTGACTGACTTAAGAAAAGAAATCCCAACATAAAAAGTTTGGTTGTTTCTCAGTTTACAACATTCTGT  
 CTTAATAGAAAATACCCTTAAAGCCTCTGGATTTGTGTTTACTCGTTGGATGGTTCCATGGCCAAAA  
 GAAAAGAGTTGAATCAATTCAGTGTCTTCAAACACTGAAGCAGGATCTCCAATAATGCTTCTGTCC  
 TTAAGCAGGTGGAGTTGGTTTGAATCTGTCTGCAGCTTCTCGAGTGTTTTAAATGGATCCAGCCTGGA  
 ATCCTGTCTGAAGATCAGTGTCTTGCAGATGCCATAGACTTGGTCAGAAGCAAGAAGTTATCATCAC  
 AAAATTCATTGTAAGGACTCTGTTGAAGAAAATATGCTGAAAATACAAAACAAAAGAGAGAAGTTGCA  
 GCAGGAGCCTTTGGAACATAAAAACCAATGCTGACGAAATGAAACAAGCCAAAATTAATGAAATCAGAA  
 CATTAATTGACTTA

ACGCGTACGCGGCCGCTCGAGCAGAACTCATCTCAGAAGAGGATCTGGCAGCAATGATATCCTGGATT  
 ACAAGGATGACGACGATAAGGTTTAA

**Protein Sequence:**

>RC222346 protein sequence  
 Red=Cloning site Green=Tags(s)

MSWMFKRPVWKYLQTVQYGVHGNFPRLSYPTFFPRFEFQDVIPPDDLTSDEEVDVSVLFGSLRGHVVGL  
 RYYTGVVNNNEMVALQRDPNNPYDKNAIKVNNVNGNQVGHLLKELAGALAYIMDNKLAQIEGVVFPFGANN  
 AFTMPLHMTFWGKEENRKAIVSDQLKKHGFKLGPAPKTLGFNLESGWGSGRAGPSYSMPVHAQVMTTEQL  
 KTEFDKLFEDLKEDDKTHEMEPAEAIETPLLPHQKQALAWMVSRENSKELPPFWEQRNDLYYNTITNFSE  
 KDRPENHGGILADDMLGKTLTAIAVILTNFHDGRPLPIERVKKNLLKKEYNVNDDSMKLGNNNTSEKA  
 DGLSKDASRCSEQPSISDIKEKSKFRMSELSSSRPKRRKTAVQYIESSDSEEIETSELPQKMKGKLNKQV  
 SETKGRAKSSKVIEDVAFACALTSSVPTTKKMLKKGACAVEGSKKTDVEERPTTLIICPLSVLSNWI  
 DQFGQHIKSDVHLNFYVYYPDRIREPALLSKQDIVLTTYNILTHDYGTGDSPLHSIRWLRVILDEGHA  
 IRNPNAQQTKAVLDLESERRWVLTGTPIQNSLKDLSLLSFLKLPKPFIDREWWHRTIQRPVMTMGDEGGLR  
 RLQSLIKNITLRRTKTSKIKGKPVLELPERKVF IQHITLSDEERKIYQSVKNEGRATIGRYFNEGTVLAH  
 YADVLGLLLRLRQICCHTYLLTNAVSSNGPSGNDTPEELRKKLIRKMKLILSSGSDEECAICLDSLTPVP  
 ITHCAHFVCKPCICQVIQNEQPHAKCPLCRNDIHEDNLLCEPPEELARDSEKSDMEWTSSSKINALMHA  
 LTDLRKKNPNIKSLVVSQFTTFLSLIEIPLKASGFVFTRLDGSMAQKRVESIQCFFONTEAGSPTIMLLS  
 LKAGGVGLNLSAASRVFLMDPAWNPAEDQCFDRCHRLGQKQVEIITKFIKDSVEENMLKIQNKKRELA  
 AGAFGTTKPNADKQAKINEIRTLIDL

TRTRPLEQKLISEEDLAANDILDYKDDDDKV

**Chromatograms:**

[https://cdn.origene.com/chromatograms/mk6678\\_e12.zip](https://cdn.origene.com/chromatograms/mk6678_e12.zip)

**Restriction Sites:**

Sgfl-Mlul

**Cloning Scheme:**


**ACCN:** NM\_139048

**ORF Size:** 443 bp

**OTI Disclaimer:** The molecular sequence of this clone aligns with the gene accession number as a point of reference only. However, individual transcript sequences of the same gene can differ through naturally occurring variations (e.g. polymorphisms), each with its own valid existence. This clone is substantially in agreement with the reference, but a complete review of all prevailing variants is recommended prior to use. [More info](#)

**OTI Annotation:** This clone was engineered to express the complete ORF with an expression tag. Expression varies depending on the nature of the gene.

**Components:** The ORF clone is ion-exchange column purified and shipped in a 2D barcoded Matrix tube containing 10ug of transfection-ready, dried plasmid DNA (reconstitute with 100 ul of water).

- Reconstitution Method:**
1. Centrifuge at 5,000xg for 5min.
  2. Carefully open the tube and add 100ul of sterile water to dissolve the DNA.
  3. Close the tube and incubate for 10 minutes at room temperature.
  4. Briefly vortex the tube and then do a quick spin (less than 5000xg) to concentrate the liquid at the bottom.
  5. Store the suspended plasmid at -20°C. The DNA is stable for at least one year from date of shipping when stored at -20°C.

**RefSeq:** [NM\\_139048.3](#)

**RefSeq Size:** 4514 bp

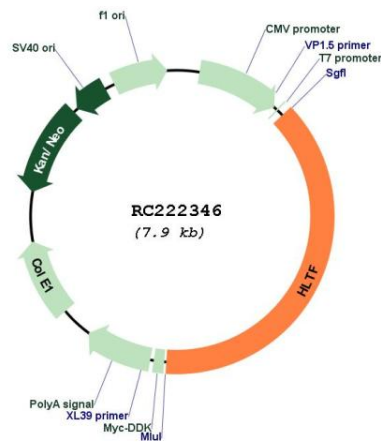
**RefSeq ORF:** 3030 bp

**Locus ID:** 6596

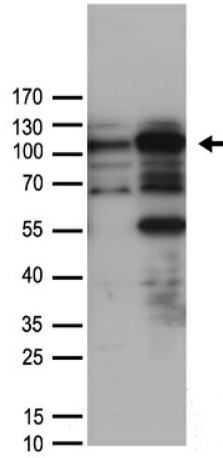
**UniProt ID:** [Q14527](#)  
**Cytogenetics:** 3q24  
**Protein Families:** Druggable Genome, Transcription Factors  
**MW:** 113.9 kDa

**Gene Summary:** This gene encodes a member of the SWI/SNF family. Members of this family have helicase and ATPase activities and are thought to regulate transcription of certain genes by altering the chromatin structure around those genes. The encoded protein contains a RING finger DNA binding motif. Two transcript variants encoding the same protein have been found for this gene. However, use of an alternative translation start site produces an isoform that is truncated at the N-terminus compared to the full-length protein. [provided by RefSeq, Jul 2008]

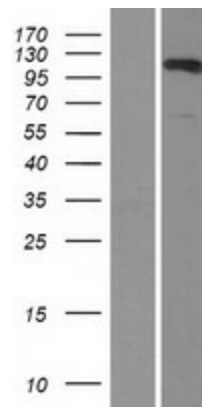
### Product images:



Circular map for RC222346



HEK293T cells were transfected with the pCMV6-ENTRY control (Cat# [PS100001], Left lane) or pCMV6-ENTRY HLTF (Cat# RC222346, Right lane) cDNA for 48 hrs and lysed. Equivalent amounts of cell lysates (5 ug per lane) were separated by SDS-PAGE and immunoblotted with anti-HLTF antibody (Cat# [TA890055]). Positive lysates [LY401071] (100ug) and [LC401071] (20ug) can be purchased separately from OriGene.



Western blot validation of overexpression lysate (Cat# [LY408402]) using anti-DDK antibody (Cat# [TA50011-100]). Left: Cell lysates from untransfected HEK293T cells; Right: Cell lysates from HEK293T cells transfected with RC222346 using transfection reagent MegaTran 2.0 (Cat# [TT210002]).