

## Product datasheet for **RC222337**

### APRT (NM\_001030018) Human Tagged ORF Clone

#### Product data:

**Product Type:** Expression Plasmids  
**Product Name:** APRT (NM\_001030018) Human Tagged ORF Clone  
**Tag:** Myc-DDK  
**Symbol:** APRT  
**Synonyms:** AMP; APRTD  
**Mammalian Cell Selection:** Neomycin  
**Vector:** pCMV6-Entry (PS100001)  
**E. coli Selection:** Kanamycin (25 ug/mL)  
**ORF Nucleotide Sequence:** >RC222337 representing NM\_001030018  
**Red**=Cloning site **Blue**=ORF **Green**=Tags(s)

TTTTGTAATACGACTCACTATAGGGCGCCGGGAATTCGTCGACTGGATCCGGTACCGAGGAGATCTGCC  
GCC**CGATCGCC**

**ATGGCCGACTCCGAGCTGCAGCTGGTTGAGCAGCGGATCCGAGCTTCCCCGACTTCCCCACCCAGGCG  
TGGTATTCAGGGACATCTCGCCGTCCTGAAGGACCCCGCTCCTCCGCGCCGCATCGGCCTCCTGCG  
GCGACACCTGAAGGCGACCCACGGGGCCGCATCGACTACATCGCAGGCCTAGACTCCCAGGCTTCTC  
TTTGGCCCTCCCTGGCCAGGAGCTTGGACTGGGCTGCGTGCTCATCCGAAAGCGGGGAAGCTGCCAG  
GCCCCACTCTGTGGCCTCCTATCCCTGGAGTACGGGAAGGCTGAGCTGGAGATTCAGAAAGACGCCCT  
GGAGCCAGGACAGAGGGTGGTCGTCGTGGATGATCTGCTGGCCACTGGTGT**

**ACGCGTACGCGGCCGCTCGAGCAGAACTCATCTCAGAAGAGGATCTGGCAGCAAATGATATCCTGGATT  
ACAAGGATGACGACGATAAGGTTTAA**

**Protein Sequence:** >RC222337 representing NM\_001030018  
**Red**=Cloning site **Green**=Tags(s)

MADSELQLVEQIRSFDFPTPGVVFRDISPVLKDPASFRAAIGLLARHLKATHGGRIDYIAGLDSRGFL  
FGPSLAQELGLGCVLIRKRKLPGLWASYSLEYGKAELEIQKDALEPGQRVVVDDLLATGV

**TRTRPLEQKLISEEDLAANDILDYKDDDDKV**

**Chromatograms:** [https://cdn.origene.com/chromatograms/ja1434\\_b01.zip](https://cdn.origene.com/chromatograms/ja1434_b01.zip)

**Restriction Sites:** SgfI-MluI



[View online »](#)

**Cloning Scheme:**


**ACCN:** NM\_001030018

**ORF Size:** 402 bp

**OTI Disclaimer:** The molecular sequence of this clone aligns with the gene accession number as a point of reference only. However, individual transcript sequences of the same gene can differ through naturally occurring variations (e.g. polymorphisms), each with its own valid existence. This clone is substantially in agreement with the reference, but a complete review of all prevailing variants is recommended prior to use. [More info](#)

**OTI Annotation:** This clone was engineered to express the complete ORF with an expression tag. Expression varies depending on the nature of the gene.

**Components:** The ORF clone is ion-exchange column purified and shipped in a 2D barcoded Matrix tube containing 10ug of transfection-ready, dried plasmid DNA (reconstitute with 100 ul of water).

- Reconstitution Method:**
1. Centrifuge at 5,000xg for 5min.
  2. Carefully open the tube and add 100ul of sterile water to dissolve the DNA.
  3. Close the tube and incubate for 10 minutes at room temperature.
  4. Briefly vortex the tube and then do a quick spin (less than 5000xg) to concentrate the liquid at the bottom.
  5. Store the suspended plasmid at -20°C. The DNA is stable for at least one year from date of shipping when stored at -20°C.

**RefSeq:** [NM\\_001030018.2](#)

**RefSeq Size:** 673 bp

**RefSeq ORF:** 405 bp

**Locus ID:** 353

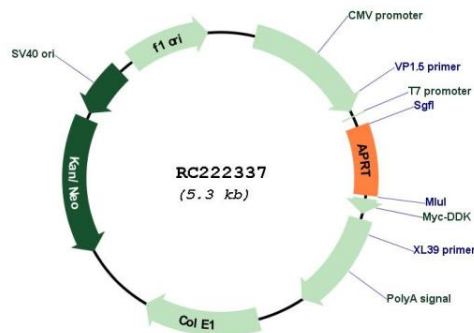
**UniProt ID:** [P07741](#)

**Cytogenetics:** 16q24.3  
**Protein Families:** Druggable Genome  
**Protein Pathways:** Metabolic pathways, Purine metabolism

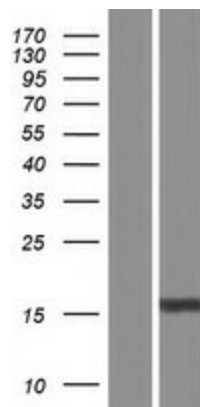
**MW:** 14.4 kDa

**Gene Summary:** Adenine phosphoribosyltransferase belongs to the purine/pyrimidine phosphoribosyltransferase family. A conserved feature of this gene is the distribution of CpG dinucleotides. This enzyme catalyzes the formation of AMP and inorganic pyrophosphate from adenine and 5-phosphoribosyl-1-pyrophosphate (PRPP). It also produces adenine as a by-product of the polyamine biosynthesis pathway. A homozygous deficiency in this enzyme causes 2,8-dihydroxyadenine urolithiasis. Two transcript variants encoding different isoforms have been found for this gene. [provided by RefSeq, Jul 2008]

### Product images:



Circular map for RC222337



Western blot validation of overexpression lysate (Cat# [LY422236]) using anti-DDK antibody (Cat# [TA50011-100]). Left: Cell lysates from untransfected HEK293T cells; Right: Cell lysates from HEK293T cells transfected with RC222337 using transfection reagent MegaTran 2.0 (Cat# [TT210002]).