

Product datasheet for **RC222333**

SH2B1 (NM_015503) Human Tagged ORF Clone

Product data:

Product Type:	Expression Plasmids
Product Name:	SH2B1 (NM_015503) Human Tagged ORF Clone
Tag:	Myc-DDK
Symbol:	SH2B1
Synonyms:	PSM; SH2B
Mammalian Cell Selection:	Neomycin
Vector:	pCMV6-Entry (PS100001)
E. coli Selection:	Kanamycin (25 ug/mL)



[View online »](#)

ORF Nucleotide Sequence:

>RC222333 representing NM_015503
 Red=Cloning site Blue=ORF Green=Tags(s)

TTTTGTAATACGACTCACTATAGGGCGGCCGGGAATTCGTCGACTGGATCCGGTACCGAGGAGATCTGCC
 GCC**CGGATCGCC**

ATGAATGGTGCCCTTCCCAGAGGACGGGGCCTCCCCCTCGTCTCCCCCGCTGCCCCACCCCGCCCC
 CTAGTTGGCGGGAGTTCTGTGAGTCCCACGCCGGGCTGCGGCTCTGGACTTTGCCCGCCGTTTTCGCCT
 CTACCTGGCCTCCCACCCCAATATGCGGGGCCGGGGCCGAGGCTGCCTTCTCCCGCCGTTTTGTGAG
 CTCTTCTGCAGCACTTTGAAGCCGAGGTGGCCCGGGCCTCTGGCTCCCTGTCGCCACCCATCTGGCTC
 CCCTGAGCCCTGGTGGGAGATTTGCCACATGACCTGTCCCTTGAGAGCTGCAGGTGGTGGGCCCT
 GGCTGTGTGGGCCCTTCTCGATCATCTGAGGACCTGGCCGGCCCTCCCTTCTCAGTCTTCTCTCC
 TCTACAACCTCTCAAGCCGAAGCTCAAGAAGCGTTTTCCCTGCGTTCAGTGGTTCGCTGTCCGAG
 GCTCAGTCCGTGGCATCTGCAGTGGCGGGGACCGTTGACCCTCCCTCCGCTGGGCCCTGGAGAC
 CTGCTCAGGCCCCAGTCTTAGGTGAAACAGCAACTCCAACCTCTGGCGGGCTGGGACCGTTGGT
 AGGGGACTGGTCACTGATGGAACGTCCCTGGGAAAGATGGACTCACCGTTTTGAGAGGCTGAGACTCA
 GTCGGGGAGGGGGCGCCTTGAAGGATGGAGCAGGGATGGTGCAGAGGGAAGAGCTGCTGAGTTTCATGGG
 GGCTGAGGAGGCAGCCCTGACCCAGCCGGAGTGGGCCGGGGAGGAGGGGTGGCTGGGCCTCCTTACGGG
 GGAGGAGGGCAGCCCTCAGTGGCAGAAGTGTGCGCTGCTGCTTGAAGTGAAGGAGAAGGAGGAGGAGAA
 GTGCGCTGGAGTTCTTTGTACCACCAAGGCCTCTCGGCCCGACTCAGCATCCCTGCTTCTATCAC
 AGAGTCCGACAACACAGCCCTGGAGATGCCTGACCGGGAGAACACGTTTGTGGTTAAGGTGGAAGGT
 CCATCCGAGTATATCATGGAGACAGTGGATGCCAGCATGTGAAGGCCTGGTGTCTGACATCCAAGAAT
 GCCTGAGCCCAGGACCCCTGCCCTGCTACCAGTCCCCGCCCATGACCCCTCCCTTGGCCCTGGGACCTC
 ATTCTTTACAAGGAGAACACAGACAGCCTGGAGCTGCCTGCCTGAATCACTCGGAGAGTCTACCCAGC
 CAGGACCTGCTGCTTGGACCCAGCGAGCAATGACCGCCTGTCGAGGGGGCATATGGGGCCTCTCAG
 ACCGCCCTCGGCATCCATCTCCCCAGCTCTGCCTCCATTGCCGCTCCCATTTTGACTCGATGGAAC
 GCTTCCCCCAGAGTTGCCCCCCGCATCCCCATTGAAGAGGGACCCCAACAGGGACAGTTCATCCCTC
 TCAGCCCCCTACCCTCCCTTGGACTCCGAAACAGCCACAGGGTCTTCTGTCCAGGGGGAGCCAG
 AGGGCGGTGAGGGGGACAGCCCTCTCAGGGTATCCTTGGTTCCACGGGATGCTCTCTCGGCTCAAGGC
 TGCACAGTTGGTGTGACTGGCGGCACTGGCTCCACGGTGTCTTCTGGTGCGCCAGAGTGAACAAGG
 CGGGGTGAATACGTCTCACCTTCAACTCCAGGGCAAGGCCAAGCACCTGCGTTTGTGCTGAACGAGG
 AGGGTCAGTGCCGGTCCAGCACCTGTGGTTCCAGTCCATTTTCGATATGCTCGAGCACTCCGGGTGCA
 CCCCATCCCTTTGGAGTCGGGAGGCTCCAGTGTGTTGTCTTGTGCTGAGTATGTCATCCCTCCAGCGA
 CAGCAGGGCCGGGAGCAGGCTGGGAGCCATGCGGGGGTGTGCGAGGGAGATGGATGCCACCCCGATGCC
 CCTGCACCCTCATGCCCTTCGGAGCGAGTACTGTGTAACCGACCACCTCCCA

ACGCGTACGCGGGCCGCTCGAGCAGAACTCATCTCAGAAGAGGATCTGGCAGCAATGATATCCTGGATT
 ACAAGGATGACGACGATAAGGTTTAA

Reconstitution Method:

1. Centrifuge at 5,000xg for 5min.
2. Carefully open the tube and add 100ul of sterile water to dissolve the DNA.
3. Close the tube and incubate for 10 minutes at room temperature.
4. Briefly vortex the tube and then do a quick spin (less than 5000xg) to concentrate the liquid at the bottom.
5. Store the suspended plasmid at -20°C. The DNA is stable for at least one year from date of shipping when stored at -20°C.

RefSeq: [NM_015503.2](#)

RefSeq Size: 4876 bp

RefSeq ORF: 2016 bp

Locus ID: 25970

UniProt ID: [Q9NRF2](#)

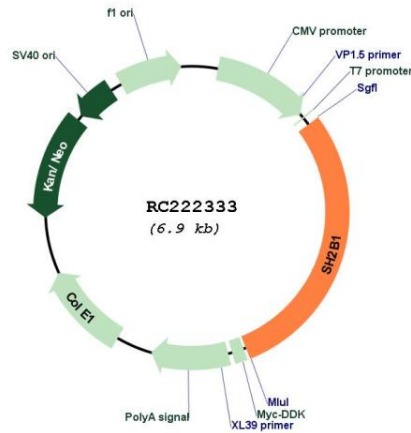
Cytogenetics: 16p11.2

Protein Pathways: Neurotrophin signaling pathway

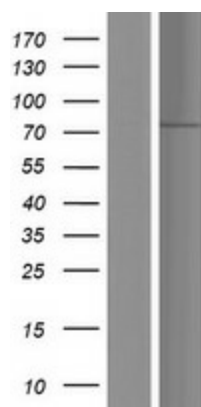
MW: 70.6 kDa

Gene Summary: This gene encodes a member of the SH2-domain containing mediators family. The encoded protein mediates activation of various kinases and may function in cytokine and growth factor receptor signaling and cellular transformation. Alternatively spliced transcript variants have been described. [provided by RefSeq, Mar 2009]

Product images:



Circular map for RC222333



Western blot validation of overexpression lysate (Cat# [LY414515]) using anti-DDK antibody (Cat# [TA50011-100]). Left: Cell lysates from untransfected HEK293T cells; Right: Cell lysates from HEK293T cells transfected with RC222333 using transfection reagent MegaTran 2.0 (Cat# [TT210002]).