

Product datasheet for **RC222332**

XPR1 (NM_004736) Human Tagged ORF Clone

Product data:

Product Type:	Expression Plasmids
Product Name:	XPR1 (NM_004736) Human Tagged ORF Clone
Tag:	Myc-DDK
Symbol:	XPR1
Synonyms:	IBGC6; SLC53A1; SYG1; X3
Mammalian Cell Selection:	Neomycin
Vector:	pCMV6-Entry (PS100001)
E. coli Selection:	Kanamycin (25 ug/mL)



[View online »](#)

ORF Nucleotide
Sequence:

>RC222332 representing NM_004736
 Red=Cloning site Blue=ORF Green=Tags(s)

TTTTGTAATACGACTCACTATAGGGCGGCCGGAATTCGTCGACTGGATCCGGTACCGAGGAGATCTGCC
 GCC**CGGATCGCC**

ATGAAGTTCGCCGAGCACCTCTCCGCGCACATCACTCCCGAGTGGAGGAAGCAATACATCCAGTATGAGG
 CTTTCAAGGATATGCTGTATTCAGCTCAGGACCAGGCACCTTCTGTGGAAGTTACAGATGAGGACACAGT
 AAAGAGGTATTTTGCAGTTTGAAGAGAAGTTTTTCCAAACCTGTGAAAAAGAAGTTGCCAAAATCAAC
 ACATTTTATTCAGAGAAGCTCGCAGAGGCTCAGCGCAGGTTTGCTACACTTCAGAATGAGCTTCAGTCAT
 CACTGGATGCACAGAAAGAAAGCACTGGTGTACTACGCTGCGACAACGCAGAAAGCCAGTCTTCCACTT
 GTCCCATGAGGAACGTGTCCAACATAGAAATATTAAGACCTTAACTGGCCTTCAGTGAGTTCTACCTC
 AGTCTAATCCTGCTGCAGAACTATCAGAATCTGAATTTTACAGGGTTTCGAAAAATCCTGAAAAAGCATG
 ACAAGATCCTGGAACATCTCGTGGAGCAGATTGGCGAGTGGCTCACGTAGAGGTGGCCCCATTTTATAC
 ATGCAAGAAAATCAACCAGCTTATCTCTGAAACTGAGGCTGTAGTGACCAATGAAGTTGAAGATGGTGAC
 AGACAAAAGGCTATGAAGCGTTTACGTGTCCCCCTTTGGGAGCTGCTCAGCCTGCACCAGCATGGACTA
 CTTTTAGAGTTGGCCTATTTTGTGGAATATTCATTGTAAGTATTACCTTGTGCTTGGCCGTGTATT
 TAAACTTGAAACAGATAGAAGTATATGGCCCTTGATAAGAATCTATCGGGGTGGCTTTCTTCTGATTGAA
 TTCCTTTTTTCTACTGGGCATCAACACGTATGGTTGGAGACAGGCTGGAGTAAACCATGACTCATCTTTG
 AACTTAATCCGAGAAGCAATTTGTCTCATCAACATCTCTTTGAGATTGCTGGATTCTCGGGATATTGTG
 GTGCCTGAGCCTTCTGGCATGCTCTTTGCTCCAATTAGTGTATCCCCACATATGTGTATCCACTTGCC
 CTTTATGGATTTATGGTTTTCTCTTATCAACCCACAAAACCTTTCTACTATAAATCCCGTTTTGGC
 TGCTTAAACTGCTGTTTTGAGTATTTACAGCCCCCTTCCATAAGGTAGGCTTTGCTGATTTCTGGCTGGC
 GGATCAGCTGAACAGCCTGTGATGATACTGATGGACCTGGAATATATGATCTGCTTCTACAGTTTGGAG
 CTCAAATGGGATGAAAGTAAAGGCCTGTTGCCAAATAATTCAGAAGAATCAGGAATTTGCCACAAATATA
 CATATGGTGTGCGGGCCATTGTTCAAGTGCATTCCTGCTTGGCTTCGCTTCATCCAGTGCCTGCGCCGATA
 TCGAGACACAAAAGGCCTTTCTCATTTAGTTAATGCTGGCAAATACTCCACAACCTTTCTTCATGGTG
 ACGTTTGCAGCCCTTTACAGCACTCACAAAGAACGAGGTCCTCGGACACTATGGTGTCTTTTACCTGT
 GGATTGTCTTTTATATCATCAGTTCCTGCTATACCCTCATCTGGGATCTCAAGATGGACTGGGTCTCTT
 CGATAAGAATGCTGGAGAGAACACTTTCTCCGGGAAGAGATTGTATACCCCAAAAAGCCTACTACTAC
 TGTGCCATAATAGAGGATGTGATTCTGCGCTTTGCTTGGACTATCCAAATCTCGATTACCTTACAACCT
 TGTTCCTCATTCTGGGACATCATTGCTACTGTCTTTGCCCACTTGGGTTTTCCGGGATTTGTGTG
 GAACCTTCTCCGCTGGAGAATGAACATCTGAATAACTGTGGTGAATTCGCTGCTGTGCGGGACATCTCT
 GTGGCCCCCTGAACGCAGATGATCAGACTCTCCTAGAACAGATGATGGACCAGGATGATGGGGTACGAA
 ACCGCCAGAAGAATCGGTCATGGAAGTACAACCAGAGCATATCCCTGCGCCGGCCTCGCCTCGCTTCTCA
 ATCCAAGGCTCGTGACACTAAGGTATTGATAGAAGACACAGATGATGAAGCTAACACT

ACGCGTACGCGGCCGCTCGAGCAGAACTCATCTCAGAAGAGGATCTGGCAGCAATGATATCCTGGATT
 ACAAGGATGACGACGATAAGGTTTAA

Protein Sequence: >RC222332 representing NM_004736
 Red=Cloning site Green=Tags(s)

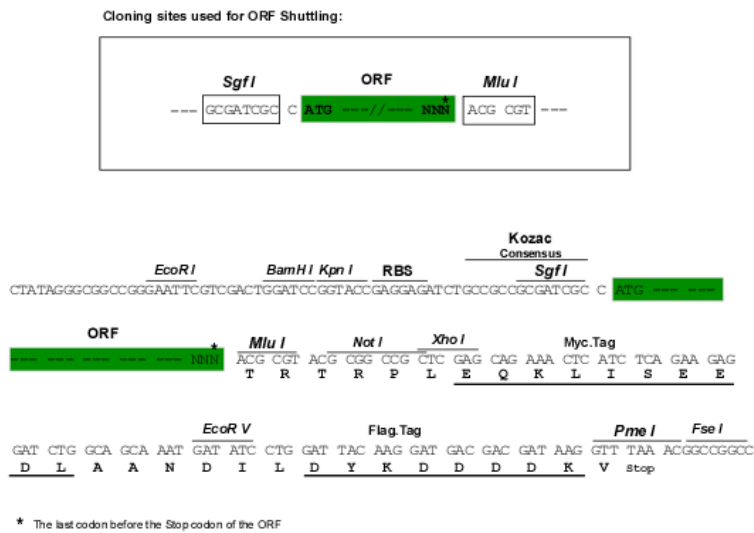
MKFAEHL SAHITPEWRKQYIQYEAFKDMLYSAQDQAPSVEVTDEDTVKRYFAKFEKFFQTCEKELAKIN
 TFYSEKLAEAQRRFATLQNELQSSLDAQKESTGVTTLRQRKPVFHL SHEERVQHRNIKDLKAFSEFYL
 SLILLQNYQNLNFTGFRKILKHKHDKILETSRGADWRVAHVEVAPFYTCCKINQLISETEAVVTNELEDGD
 RQKAMKRLRVPPLGAAQPAPAWTTFRVGLFCGIFIVLNITLVLAAVFKLETDRSIWPLIRIYRGGFLLIE
 FLFLLGINTYGWRQAGVNHVLI FELNPRSNLSHQHLFEIAGFLGILWCL SLLACFFAPISVIPTYVYPLA
 LYGMVFFLINPTKTFYKSRFWLLKLLFRVFTAPFHKVGFADFWLADQLNSLSVILMDLEYMICFYSL
 LKWDKGLLPNNSEESGICHKYTYGVRAIVQCIPAWLRFIQCLRRYRDTKRAFPHLVNAGKYSTTFMV
 TFAALYSTHKERGHSDTMVFFYLWIVFYIISSCYTLIIDLKMDWGLFDKNAGENTFLREEIVYPQKAYYY
 CAIIEDVILRFAWTIQISITSTLLPHSGDIIATVFAPLEVFRFVWNFFRLENEHLNCCGEFRAVRDIS
 VAPLNADDQTLLEQMMDQDDGVRNRQKNRSWKYNQISILRRPRLASQSKARDTKVLIEDTDEANT

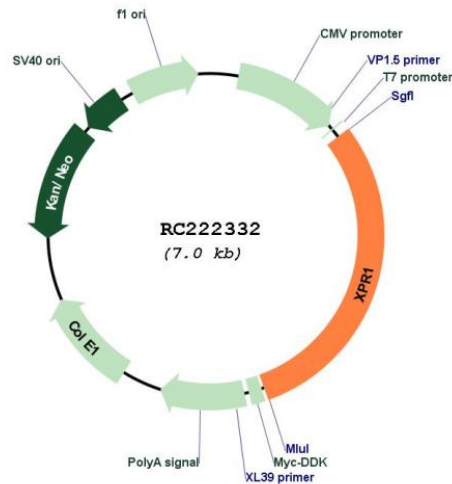
TRTRPLEQKLISEEDLAANDILDYKDDDDKV

Chromatograms: https://cdn.origene.com/chromatograms/mk6714_c10.zip

Restriction Sites: Sgfl-MluI

Cloning Scheme:



Plasmid Map:


ACCN: NM_004736

ORF Size: 2088 bp

OTI Disclaimer: The molecular sequence of this clone aligns with the gene accession number as a point of reference only. However, individual transcript sequences of the same gene can differ through naturally occurring variations (e.g. polymorphisms), each with its own valid existence. This clone is substantially in agreement with the reference, but a complete review of all prevailing variants is recommended prior to use. [More info](#)

OTI Annotation: This clone was engineered to express the complete ORF with an expression tag. Expression varies depending on the nature of the gene.

Components: The ORF clone is ion-exchange column purified and shipped in a 2D barcoded Matrix tube containing 10ug of transfection-ready, dried plasmid DNA (reconstitute with 100 ul of water).

Reconstitution Method:

1. Centrifuge at 5,000xg for 5min.
2. Carefully open the tube and add 100ul of sterile water to dissolve the DNA.
3. Close the tube and incubate for 10 minutes at room temperature.
4. Briefly vortex the tube and then do a quick spin (less than 5000xg) to concentrate the liquid at the bottom.
5. Store the suspended plasmid at -20°C. The DNA is stable for at least one year from date of shipping when stored at -20°C.

RefSeq: [NM_004736.4](#)

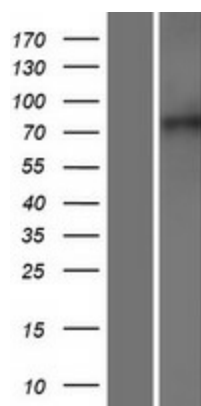
RefSeq Size: 4546 bp

RefSeq ORF: 2091 bp

Locus ID: 9213

UniProt ID:	Q9UBH6
Cytogenetics:	1q25.3
Domains:	SPX, EXS
Protein Families:	Druggable Genome, Transmembrane
MW:	81.4 kDa
Gene Summary:	The protein encoded by this gene is a receptor for the xenotropic and polytropic classes of murine leukemia viruses. The encoded protein is involved in phosphate homeostasis by mediating phosphate export from the cell. Defects in this gene have been associated with idiopathic basal ganglia calcification-6. [provided by RefSeq, Jun 2016]

Product images:



Western blot validation of overexpression lysate (Cat# [LY417787]) using anti-DDK antibody (Cat# [TA50011-100]). Left: Cell lysates from untransfected HEK293T cells; Right: Cell lysates from HEK293T cells transfected with RC222332 using transfection reagent MegaTran 2.0 (Cat# [TT210002]).