

Product datasheet for **RC222327**

THYN1 (NM_199298) Human Tagged ORF Clone

Product data:

Product Type:	Expression Plasmids
Product Name:	THYN1 (NM_199298) Human Tagged ORF Clone
Tag:	Myc-DDK
Symbol:	THYN1
Synonyms:	HSPC144; MDS012; MY105; THY28; THY28KD
Mammalian Cell Selection:	Neomycin
Vector:	pCMV6-Entry (PS100001)
E. coli Selection:	Kanamycin (25 ug/mL)
ORF Nucleotide Sequence:	>RC222327 representing NM_199298 Red=Cloning site Blue=ORF Green=Tags(s)

TTTTGTAATACGACTCACTATAGGGCGGCCGGAATTCGTCGACTGGATCCGGTACCGAGGAGATCTGCCGCC**CGATCGCC**

ATGTCGAGACCCCGAAGAGGCTGGCTGGGACTTCTGGTTCAGACAAGGGACTATCAGGAAAACGCACCAAACTGAGAACTCAGGTGAGGCATTAGCTAAAGTGGAGGACTCCAACCCTCAGAAGACTTCAGCCACTAAAACTGTTTGAAGAATCTAAGCAGCCACTGGCTGATGAAGTCAGAGCCAGAGAGCCGCCTAGAGAAAGGTGTAGATGTGAAGTTCAGCATTGAGGATCTCAAAGCACAGCCAAACAGACAACATGCTGGGATGGTGTCTGTAAGTACCAGGCTCGGAACTTCCTTAGAGCCATGAAGCTGGGAGAAGAAGCCTTCTTCTACCATAGCAACTGCAAAGAGCCAGGCATCGCAGGACTCATGAAGATCGTGAAAGAGGCTTACCCAGACCACACAGTTTGAGAAAAACAATCCCCATTATGACCCATCTAGCAAAGAGGACAACCCCTAAGTGGTCCATGGTGGATGTACAGTTTGTTCGGATGATGAAACGTTTCATCCCCCTGGCTGAGCTCAAATCCTATCATCAAGCTCACAAAGCTACTGGTGGCCCTTAAAAAATATGGTTCTTCTACTCGCCAGAGATTATCAATCCAGCCCTGACCCAGGAAGAGTTTGATTTTGTGTTTGGCCTGGAGGAAAAGGAACCAAGT

ACGCGTACGCGGCCGCTCGAGCAGAACTCATCTCAGAAGAGGATCTGGCAGCAAATGATATCCTGGATTACAAGGATGACGACGATAAGGTTTAA



[View online »](#)

Protein Sequence: >RC222327 representing NM_199298
Red=Cloning site Green=Tags(s)

MSRPRKRLAGTSGSDKGLSGKRTKTENSGEALAKVEDSNPQKTSATKNCLKNLSSHWMKSEPEsrLEKG
 VDVKFSIEDLKAQPKQTTCDWGVrNYQARNFLRAMKLGEEAFFYHSNCKEPIAGLMKIVKEAYPDHTQF
 EKNNPHYDPSSKEDNPKWSMVDVQFVRMMKRFIPLAELKSYHQAHKATGGPLKNMVLFTQRQLSIQPLTQ
 EEFDVLSLEEKEPS

TRTRPLEQKLISEEDLAANDILDYKDDDDKV

Chromatograms: https://cdn.origene.com/chromatograms/mk6599_b03.zip

Restriction Sites: SgfI-MluI

Cloning Scheme:

Cloning sites used for ORF Shuttling:



* The last codon before the Stop codon of the ORF

ACCN: NM_199298

ORF Size: 675 bp

OTI Disclaimer: The molecular sequence of this clone aligns with the gene accession number as a point of reference only. However, individual transcript sequences of the same gene can differ through naturally occurring variations (e.g. polymorphisms), each with its own valid existence. This clone is substantially in agreement with the reference, but a complete review of all prevailing variants is recommended prior to use. [More info](#)

OTI Annotation: This clone was engineered to express the complete ORF with an expression tag. Expression varies depending on the nature of the gene.

Components: The ORF clone is ion-exchange column purified and shipped in a 2D barcoded Matrix tube containing 10ug of transfection-ready, dried plasmid DNA (reconstitute with 100 ul of water).

Reconstitution Method:

1. Centrifuge at 5,000xg for 5min.
2. Carefully open the tube and add 100ul of sterile water to dissolve the DNA.
3. Close the tube and incubate for 10 minutes at room temperature.
4. Briefly vortex the tube and then do a quick spin (less than 5000xg) to concentrate the liquid at the bottom.
5. Store the suspended plasmid at -20°C. The DNA is stable for at least one year from date of shipping when stored at -20°C.

RefSeq: [NM_199298.2](#)

RefSeq Size: 1013 bp

RefSeq ORF: 678 bp

Locus ID: 29087

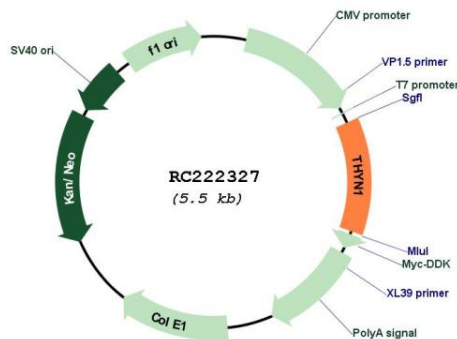
UniProt ID: [Q9P016](#)

Cytogenetics: 11q25

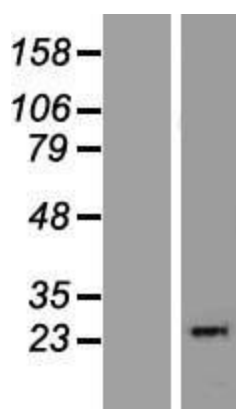
MW: 25.5 kDa

Gene Summary: This gene encodes a protein that is highly conserved among vertebrates and plant species and may be involved in the induction of apoptosis. Alternatively spliced transcript variants encoding different isoforms have been described. [provided by RefSeq, Jul 2008]

Product images:



Circular map for RC222327



Western blot validation of overexpression lysate (Cat# [LY404617]) using anti-DDK antibody (Cat# [TA50011-100]). Left: Cell lysates from untransfected HEK293T cells; Right: Cell lysates from HEK293T cells transfected with RC222327 using transfection reagent MegaTran 2.0 (Cat# [TT210002]).