

Product datasheet for RC222325

CBY2 (NM_152719) Human Tagged ORF Clone

Product data:

Product Type: Expression Plasmids
Product Name: CBY2 (NM_152719) Human Tagged ORF Clone
Tag: Myc-DDK
Symbol: CBY2
Synonyms: NURIT; SPERT
Mammalian Cell Selection: Neomycin
Vector: pCMV6-Entry (PS100001)
E. coli Selection: Kanamycin (25 ug/mL)
ORF Nucleotide Sequence: >RC222325 representing NM_152719
 Red=Cloning site Blue=ORF Green=Tags(s)

TTTTGTAATACGACTCACTATAGGGCGGCCGGAATTCGTCGACTGGATCCGGTACCGAGGAGATCTGCC
 GCC**CGATCGCC**

ATGCAACCAGAGGGGTTGAAATGTAGGATGGAGGAATCCAATGCAGAGAGGGGCACAGCCGAACCCCTTCC
 CGAGGCTCCACAACCTGTACAGCACCCCTCGCTGCGCGCAGCAGGCCGCCCTGCCCGGCTGAGCCGCAG
 GATGGCGAGCCAGCACTCTATCCACTGAACCGCTTCTCCTCCGTGCCTTTAGACCCCATGGAGCGCCCC
 ATGTCCCAGGCCGACCTGGAGCTGGACTACAACCCGCGCGGGTGCAGCTCAGCGACGAGATGTTCTGTGT
 TCCAGGACGGGCGCTGGGTAATGAGAAGTCCCGCTGCAGTCTCCCTACTTCTCCCATCCGCCTCCTT
 CCACCACAAGCTGCACCACAAGAGGCTGGCCAAGGAGTGCATGCTGCAGGAGGAGAACAAGTCTCTGCGG
 GAGGAGAACAAGGCCCTGCGCGAGGAGAACCGGATGCTCAGCAAGGAGAACAAGATCCTACAGGTCTTCT
 GGGAGGAGCACAAGGCCCTCGCTGGGCCGAGAGGAGAGCCGGGCCCCCTCGCCACTGCTGCACAAAGACAG
 CGCGTCCCTGGAGGTGGTGAAGAAGGACCACGTCGCCCTGCAGGTGCCCGTGGCAAGGAGGACAGCACC
 CTGCAGCTCCTCCGGGAGGAGAAATCGCGCGCTGCAGCAGCTGCTGGAGCAGAAACAGGCCACTGGGCGC
 AGGCAGAGGACACGGCCGCCCTGCCGAGGAAAGCAAGCCCGCCCCCTCACCCACGAGGAGCCCTGCAG
 CCCC GGCTGCTGCAGGACCAGGGCTCCGGCCTCTCCTCCGCTTCGAGGAGCCCAAAGGGCCTCCGGCC
 CGGCAGGAGGACTCCAAGGAGCTGCGCGCCCTGCGGAAGATGGTCAGCAACATGTCCGGGCCCTCCGGCC
 AGGAGGAGGCCAAGGTGGGCCCGGCCTGCCCGACGGCTGCCAGCCCTGCAGCTGCTGAGAGAGATGAG
 GCAGGCGTGCAGGCCCTGCTCAAGGAGAACCAGCTCCTGCAGGAGGAGAACAGGACCCTGCAGGTGCTA
 CGGGCAGAGCACAGGGGCTTCCAGGAGGAGAACAAGGCCCTGTGGGAGAACAACAAGCTGAAGCTGCAGC
 AGAAGCTGGTCATTGACACCGTGACCGAGGTCACCGCGCATGGAAATGCTCATCGAGGAGCTCTACGC
 TTTCATGCCGGCCAGGAGCCAGGACCCCAAGAAGCCTAGCAGGGTCT

ACGCGTACGCGGCCGCTCGAGCAGAACTCATCTCAGAAGAGGATCTGGCAGCAATGATATCCTGGATT
 ACAAGGATGACGACGATAAGGTTTAA



Protein Sequence: >RC222325 representing NM_152719
Red=Cloning site Green=Tags(s)

MQPEGLKCRMEESNAERGTAEPFPRLHNLYSTPRCAQQAALPRLSRRMASQHSYPLNRFSSVPLDPMERP
 MSQADLELDYNPPRVQLSDEMVFVQDGRWVNENCR LQSPYFSPSASFHHKLHKKRLAKECMLQEENKSLR
 EENKALREENRMLSKENKILQVFWEEHKASLGREESRAPSPLLHKDSASLEVVKKDHVALQVPRGKEDST
 LQLLREENRALQQLLEQKQAYWAQAEDTAAPAEESKPAPSPHEEPCSPGLLQDQGSGLSSRFEEPKGPPA
 RQEDSKELRALRKMVSNMSGPSGEEAKVGPGLPDGCQPLQLLREMRQALQALLKENRLLQEENRTLQVL
 RAEHRGFQEENKALWENNKLKLQQLVIDTVTEVTARMEMLIEELYAFMPARSQDPKPSRV

TRTRPLEQKLISEEDLAANDILDYKDDDDKV

Restriction Sites:

SgfI-MluI

Cloning Scheme:

Cloning sites used for ORF Shuttling:



* The last codon before the Stop codon of the ORF

ACCN: NM_152719

ORF Size: 1236 bp

OTI Disclaimer: The molecular sequence of this clone aligns with the gene accession number as a point of reference only. However, individual transcript sequences of the same gene can differ through naturally occurring variations (e.g. polymorphisms), each with its own valid existence. This clone is substantially in agreement with the reference, but a complete review of all prevailing variants is recommended prior to use. [More info](#)

OTI Annotation: This clone was engineered to express the complete ORF with an expression tag. Expression varies depending on the nature of the gene.

Components: The ORF clone is ion-exchange column purified and shipped in a 2D barcoded Matrix tube containing 10ug of transfection-ready, dried plasmid DNA (reconstitute with 100 ul of water).

- Reconstitution Method:**
1. Centrifuge at 5,000xg for 5min.
 2. Carefully open the tube and add 100ul of sterile water to dissolve the DNA.
 3. Close the tube and incubate for 10 minutes at room temperature.
 4. Briefly vortex the tube and then do a quick spin (less than 5000xg) to concentrate the liquid at the bottom.
 5. Store the suspended plasmid at -20°C. The DNA is stable for at least one year from date of shipping when stored at -20°C.

RefSeq Size: 1613 bp

RefSeq ORF: 1347 bp

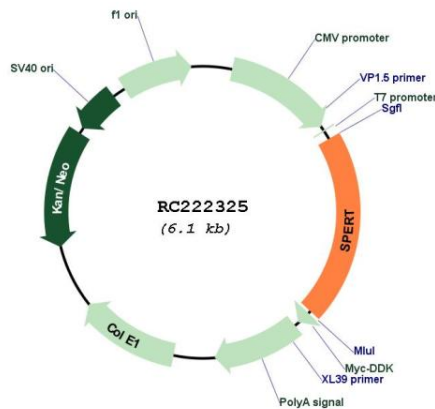
Locus ID: 220082

UniProt ID: [Q8NA61](#)

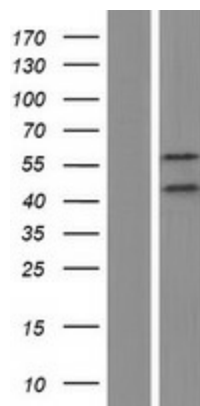
Cytogenetics: 13q14.13

MW: 51.4 kDa

Product images:



Circular map for RC222325



Western blot validation of overexpression lysate (Cat# [LY407339]) using anti-DDK antibody (Cat# [TA50011-100]). Left: Cell lysates from untransfected HEK293T cells; Right: Cell lysates from HEK293T cells transfected with RC222325 using transfection reagent MegaTran 2.0 (Cat# [TT210002]).