

Product datasheet for **RC222318**

RPS4Y2 (NM_001039567) Human Tagged ORF Clone

Product data:

Product Type:	Expression Plasmids
Product Name:	RPS4Y2 (NM_001039567) Human Tagged ORF Clone
Tag:	Myc-DDK
Symbol:	RPS4Y2
Synonyms:	RPS4Y2P
Mammalian Cell Selection:	Neomycin
Vector:	pCMV6-Entry (PS100001)
E. coli Selection:	Kanamycin (25 ug/mL)
ORF Nucleotide Sequence:	>RC222318 representing NM_001039567 Red=Cloning site Blue=ORF Green=Tags(s)

TTTTGTAATACGACTCACTATAGGGCGCCGGGAATTCGTCGACTGGATCCGGTACCGAGGAGATCTGCC
GCC**CGATCGCC**

ATGGCCCGGGCCCAAGAAGCACTTGAAGCGTGTTCAGCGCCGAAGCATTGGATGCTGGATAAACTAA
CTGGTGTATTTGCACCTCGTCCATCGACAGGTCTCACAAGCTGAGGGAATGTCTCCCTGATAGTCTT
CCTCAGGAATAGACTCAAGTATGCATTGACTGGAGATGAGGTAAGAAGATATGTATGCAACACTTCCTC
AAAATTGATGGCAAGGTTTCGAGTGGACATCACATACCTGCTGGATTCATAGATGTCATCAGCATTGAGA
AAACAGGTGAGCATTTCGCCTGGTCTATAATACCAAGGCTGTTTTGCTGTTTCATCGTATCACAGTGGA
AGAGGCAAAGTACAAGTTGTGCAAAGTGAGGAAGATTACTGTGGGGACAAGGGAATCCACACCTGGTG
ACTCATGATGCTCGAACCATTCGCTACCCAGATCCTCTCATCAAGGTGAACGATACTGTGCAGATTGATT
TAGGGACTGGGAAGATAACCAGCTTTATCAAATTTGACACAGGCAATGTATGTATGGTATTGCTGGAGC
TAACCTCGGTCGTGTTGGTGTGATCACAAACAGGGAAAGACATCCTGGTCTTTCGATGTGGTACATGTG
AAGGATGCCAACGGCAACAGCTTTGCCACAAGGATTTCCAACATTTTGTTCATTGGCAATGGTAATAAC
CTTGGATTTCCCTGCCAGGGGAAAGGGCATCCGACTTACTATTGCTGAAGAGAGAGACAAGAGGCTGGC
TGCCAAACAGAGCAGTGCC

ACGCGTACGCGGCCGCTCGAGCAGAACTCATCTCAGAAGAGGATCTGGCAGCAAATGATATCCTGGATT
ACAAGGATGACGACGATAAGGTTTAA



[View online »](#)

Protein Sequence: >RC222318 representing NM_001039567
Red=Cloning site Green=Tags(s)

MARGPKKHLKRVAAPKHWMLDKL TGVFAPRPSTGPHKLRECLPLIVFLRNRLKYALTGDEVKKICMQHFL
 KIDGKVRVDITYPAGFIDVISIEKTGEHFRLVYNTKGCFAVHRITVEEAKYKLCVKRKITVGTGKIPHLV
 THDARTIRYPDPLIKVNDTVQIDLGTGKITSFIKFDGTGNVCMVIAGANLGRVGVITNRRERHPGSCDVVHV
 KDANGNSFATRISNIFVIGNGNKPWISLPRGKGI RL TIAEERDKRLAAKQSSG

TRTRPLEQKLISEEDLAANDILDYKDDDDKV

Chromatograms: https://cdn.origene.com/chromatograms/mk8041_c10.zip

Restriction Sites: SgfI-MluI

Cloning Scheme:

Cloning sites used for ORF Shuttling:



* The last codon before the Stop codon of the ORF

ACCN: NM_001039567

ORF Size: 789 bp

OTI Disclaimer: The molecular sequence of this clone aligns with the gene accession number as a point of reference only. However, individual transcript sequences of the same gene can differ through naturally occurring variations (e.g. polymorphisms), each with its own valid existence. This clone is substantially in agreement with the reference, but a complete review of all prevailing variants is recommended prior to use. [More info](#)

OTI Annotation: This clone was engineered to express the complete ORF with an expression tag. Expression varies depending on the nature of the gene.

Components: The ORF clone is ion-exchange column purified and shipped in a 2D barcoded Matrix tube containing 10ug of transfection-ready, dried plasmid DNA (reconstitute with 100 ul of water).

Reconstitution Method:

1. Centrifuge at 5,000xg for 5min.
2. Carefully open the tube and add 100ul of sterile water to dissolve the DNA.
3. Close the tube and incubate for 10 minutes at room temperature.
4. Briefly vortex the tube and then do a quick spin (less than 5000xg) to concentrate the liquid at the bottom.
5. Store the suspended plasmid at -20°C. The DNA is stable for at least one year from date of shipping when stored at -20°C.

RefSeq: [NM_001039567.3](#)

RefSeq Size: 792 bp

RefSeq ORF: 792 bp

Locus ID: 140032

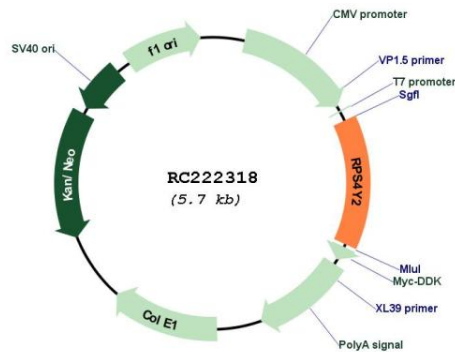
UniProt ID: [Q8TD47](#)

Cytogenetics: Yq11.223

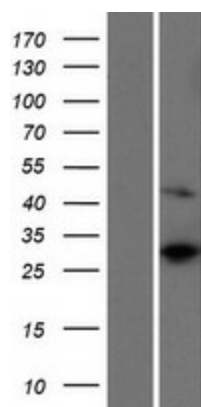
MW: 29.1 kDa

Gene Summary: The protein encoded by this gene is a ribosomal protein that is highly similar to RPS4Y1. This gene is located in the male-specific region of the Y chromosome. [provided by RefSeq, Aug 2012]

Product images:



Circular map for RC222318



Western blot validation of overexpression lysate (Cat# [LY422071]) using anti-DDK antibody (Cat# [TA50011-100]). Left: Cell lysates from untransfected HEK293T cells; Right: Cell lysates from HEK293T cells transfected with RC222318 using transfection reagent MegaTran 2.0 (Cat# [TT210002]).