

## Product datasheet for **RC222317**

### **SLCO1B3 (NM\_019844) Human Tagged ORF Clone**

#### **Product data:**

Product Type:	Expression Plasmids
Product Name:	SLCO1B3 (NM_019844) Human Tagged ORF Clone
Tag:	Myc-DDK
Symbol:	SLCO1B3
Synonyms:	HBLRR; LST-2; LST-3TM13; LST3; OATP-8; OATP1B3; OATP8; SLC21A8
Mammalian Cell Selection:	Neomycin
Vector:	pCMV6-Entry (PS100001)
E. coli Selection:	Kanamycin (25 ug/mL)



[View online »](#)

ORF Nucleotide  
Sequence:

>RC222317 representing NM\_019844  
Red=Cloning site Blue=ORF Green=Tags(s)

TTTTGTAATACGACTCACTATAGGGCGGCCGGAATTCGTCGACTGGATCCGGTACCGAGGAGATCTGCC  
GCCGCGATCGCC

ATGGACCAACATCAACATTTGAATAAAACAGCAGAGTCAGCATCTTCAGAGAAAAAGAAAACAAGACGCT  
GCAATGGATTCAAGATGTTCTTGGCAGCCCTGTCAATTCAGCTATATTGCTAAAGCACTAGGTGGAATCAT  
TATGAAAATTTCCATCACTCAAATAGAAAAGGAGATTTGACATATCCTCTTCTCTTCTGCTGGTTAATTGAT  
GGAAGCTTTGAAATTGGAATTTGCTTGTGATTGATTTGTAAGTTACTTTGGATCTAAACTACACAGAC  
CGAAGTTAATTGGAATTGGTTGTCTCCTTATGGGAACTGGAAGTATTTTGACAGCTTTACCACATTTCTT  
CATGGGATATTAGGTATTCTAAAGAAACCCATATTAATCCATCAGAAAATTCAACATCAAGTTTATCA  
ACCTGTTAATTAATCAAACCTTATCATTCAATGGAACATCACCTGAGATAGTAGAAAAAGATTGTGTA  
AGGAATCTGGGTCACACATGTGGATCTATGTCTTCATGGGGAATATGCTTCGTGGCATAGGGGAAACCC  
CATAGTACCATTGGGGATTTACATACATTGATGATTTTGCAAAAGAAGGACATTCTCCTTGTATTTAGGT  
AGTTTGAATGCAATAGGAATGATTGGTCCAGTCATTGGCTTTGCACTGGGATCTCTGTTTCTAAAATAT  
ACGTGGATATTGGATATGTAGATCTGAGCACTATCAGAATAACTCCTAAGGACTCTCGTTGGGTTGGAGC  
TTGGTGGCTTGGTTTCTTGTGTCTGGACTATTTCCATTATTTCTTCCATACCATTTTTTTTCTTGCCG  
AAAAATCCAAATAAACCAAAAAAGAAAGAAAAATTTCACTATCATTGCATGTGCTGAAAACAAATGATG  
ATAGAAATCAAACAGCTAATTTGACCAACCAAGGAAAAATGTTACCAAAAAATGTGACTGGTTTTTTTCCA  
GTCTTTGAAAAGCATCCTTACCAATCCCCTGTATGTTATATTTCTGCTTTTGACATTGTTACAAGTAAGC  
AGCTTTATTGGTTCTTTTACTTACGTCTTTAAATATATGGAGCAACAGTACGGTCAGTCTGCATCTCATG  
CTAACTTTTTGTTGGGAATCATAACCATCCTACGGTTGCAACTGGAATGTTTTTAGGAGGATTTATCAT  
TAAAAAATTCAAATTGTCTTTAGTTGGAATTGCCAAATTTTCATTCTTACTTCGATGATATCCTTCTTG  
TTTCAACTTCTATATTTCCCTCTAATCTGCGAAAGCAAATCAGTTGCCGGCCTAACCTTGACCTATGATG  
GAAATAATTCAGTGGCATCTCATGTAGATGTACCCTTTCTTATTGCAACTCAGAGTGCAATTGTGATGA  
AAGTCAGTGGGAACCACTGTGGGAACAATGGAATAACTTACCTGTACCTTGTCTAGCAGGATGCAAAA  
TCCTCAAGTGGTATTA AAAAGCATACAGTGT TTTATAACTGTAGTTGTGTGGAAGTAACTGGTCTCCAGA  
ACAGAAATTA CTAGCGCACTTGGGTGAATGCCCAAGAGATAATACTTGTACAAGGAAATTTTTCATCTA  
TGTTGCAATTC AAGTCATAAACTCTTTGTTCTCTGCAACAGGAGGTACCACATTTATCTTGTGACTGTG  
AAGATTGTTCAACCTGAATTGAAAGCACTTGAATGGGTTTCCAGTCAATGGTTATAAAGAACTAGGAG  
GAATTCTAGCTCCAATATATTTGGGGCTCTGATTGATAAAACATGTATGAAGTGGTCCACCAACAGCTG  
TGGAGCACAAGGAGCTTGTAGGATATATAATCCGTATTTTTTGGAGGGTCTACTTGGGCTTATCTATA  
GCTTTAAGATTCCAGCACTTGT TTTATATATTGTTTTTCATTTTGTATGAAGAAAAATTTCAAGGAA  
AAGATACCAAGGCATCGGACAA TGAAAGAAAAGTAATGGATGAAGCAAACCTTAGAATTTCTAAATAATGG  
TGAACATTTTGTACCTTCTGCTGGAACAGATAGTAAAACATGTAATTTGGACATGCAAGACAATGCTGCT  
GCCAAC

ACGCGTACGCGGCCGCTCGAGCAGAACTCATCTCAGAAGAGGATCTGGCAGCAAATGATATCCTGGATT  
ACAAGGATGACGACGATAAGGTTTAA

Protein Sequence: >RC222317 representing NM\_019844  
 Red=Cloning site Green=Tags(s)

MDQHQLNKAESASSEKKKTRRCNGFKMFLAALSFSYIAKALGGIIMKISITQIERRFDISSLAGLID  
 GSFEIGNLLVIVFVSYFGSKLHRPKLIGIGCLLMGTGSILTALPHFFMGYYRYSKETHINPSENSTSSLS  
 TCLINQTL SFNGT SPEIVEKDCVKESGSHMWIYVFMGNMLRGIGETPIVPLGISYIDDFAKEGHSSLYLG  
 SLNAIGMIGPVIGFALGSLFAKIYVDIGYVDLSTIRITPKDSRWVGAWWLGFLVSGLFSIISIPFFFLP  
 KNPKNKPKERKISLSLHVLKTNDDRNQTANLTNQGNVTKNVTGFFQSLKSILTNPYVIFLLLTLQVS  
 SFIGSFYVFKYMEQQYQASASHANFLLGIIPTVATGMFLGGFIIKKFKLSLVGIAKFSFLTSMISFL  
 FQLLYFPLICESKSVAGLTLTYDGNNSVASHVDVPLSYCNSECNCDESQWEPVCGNNGITYLSPCLAGCK  
 SSSGIKKHTVFYNCSCVEVTGLQNRNYS AHLGECPRDNTCTRKFFIYVAIQVINSLSFATGGTTFILLTV  
 KIVQPELKALAMGFQSMVIRTLGGILAPIYFGALIDKTCMKWSTNSCGAQGACRIYNSVFFGRVYLGLSI  
 ALRFPALVLYIVFIFAMKKKFKGKDTKASDNERKVMDEANLEFLNNGEHFVPSAGTDSKTCNLDMQDNAA  
 AN

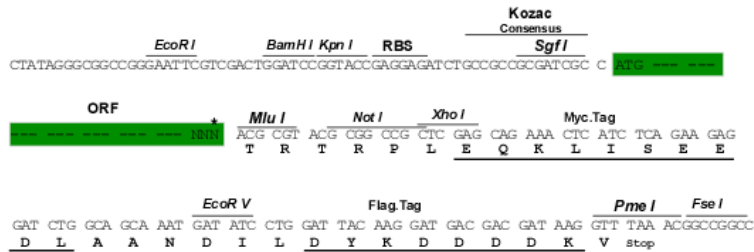
TRTRPLEQKLISEEDLAANDILDYKDDDDKV

Chromatograms: [https://cdn.origene.com/chromatograms/mg2697\\_h01.zip](https://cdn.origene.com/chromatograms/mg2697_h01.zip)

Restriction Sites: Sgfl-MluI

Cloning Scheme:

Cloning sites used for ORF Shuttling:



\* The last codon before the Stop codon of the ORF

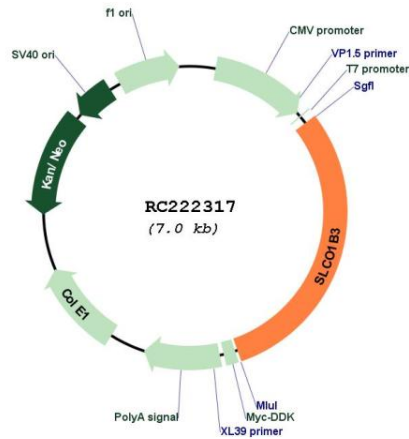
ACCN: NM\_019844

ORF Size: 2106 bp

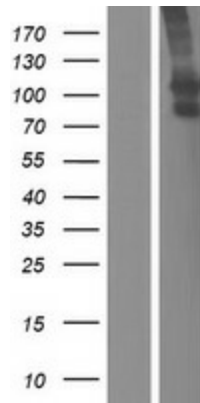
<b>OTI Disclaimer:</b>	<p>Due to the inherent nature of this plasmid, standard methods to replicate additional amounts of DNA in E. coli are highly likely to result in mutations and/or rearrangements. Therefore, OriGene does not guarantee the capability to replicate this plasmid DNA. Additional amounts of DNA can be purchased from OriGene with batch-specific, full-sequence verification at a reduced cost. Please contact our customer care team at <a href="mailto:custsupport@origene.com">custsupport@origene.com</a> or by calling 301.340.3188 option 3 for pricing and delivery.</p> <p>The molecular sequence of this clone aligns with the gene accession number as a point of reference only. However, individual transcript sequences of the same gene can differ through naturally occurring variations (e.g. polymorphisms), each with its own valid existence. This clone is substantially in agreement with the reference, but a complete review of all prevailing variants is recommended prior to use. <a href="#">More info</a></p>
<b>OTI Annotation:</b>	This clone was engineered to express the complete ORF with an expression tag. Expression varies depending on the nature of the gene.
<b>Components:</b>	The ORF clone is ion-exchange column purified and shipped in a 2D barcoded Matrix tube containing 10ug of transfection-ready, dried plasmid DNA (reconstitute with 100 ul of water).
<b>Reconstitution Method:</b>	<ol style="list-style-type: none"> <li>1. Centrifuge at 5,000xg for 5min.</li> <li>2. Carefully open the tube and add 100ul of sterile water to dissolve the DNA.</li> <li>3. Close the tube and incubate for 10 minutes at room temperature.</li> <li>4. Briefly vortex the tube and then do a quick spin (less than 5000xg) to concentrate the liquid at the bottom.</li> <li>5. Store the suspended plasmid at -20°C. The DNA is stable for at least one year from date of shipping when stored at -20°C.</li> </ol>
<b>Note:</b>	Plasmids are not sterile. For experiments where strict sterility is required, filtration with 0.22um filter is required.
<b>RefSeq:</b>	<a href="#">NM_019844.4</a>
<b>RefSeq Size:</b>	2646 bp
<b>RefSeq ORF:</b>	2109 bp
<b>Locus ID:</b>	28234
<b>UniProt ID:</b>	<a href="#">Q9NPD5</a>
<b>Cytogenetics:</b>	12p12.2
<b>Domains:</b>	OATP_N, OATP_C
<b>Protein Families:</b>	Druggable Genome, Transmembrane
<b>MW:</b>	77.2 kDa

**Gene Summary:**

This gene encodes a liver-specific member of the organic anion transporter family. The encoded protein is a transmembrane receptor that mediates the sodium-independent uptake of endogenous and xenobiotic compounds and plays a critical role in bile acid and bilirubin transport. Mutations in this gene are a cause of Rotor type hyperbilirubinemia. Alternative splicing of this gene and the use of alternative promoters results in transcript variants encoding different isoforms that differ in their tissue specificity. [provided by RefSeq, Mar 2017]

**Product images:**


Circular map for RC222317



Western blot validation of overexpression lysate (Cat# [LY412714]) using anti-DDK antibody (Cat# [TA50011-100]). Left: Cell lysates from untransfected HEK293T cells; Right: Cell lysates from HEK293T cells transfected with RC222317 using transfection reagent MegaTran 2.0 (Cat# [TT210002]).