

Product datasheet for **RC222309**

BTBD16 (NM_144587) Human Tagged ORF Clone

Product data:

Product Type:	Expression Plasmids
Product Name:	BTBD16 (NM_144587) Human Tagged ORF Clone
Tag:	Myc-DDK
Symbol:	BTBD16
Synonyms:	C10orf87
Mammalian Cell Selection:	Neomycin
Vector:	pCMV6-Entry (PS100001)
E. coli Selection:	Kanamycin (25 ug/mL)



[View online »](#)

ORF Nucleotide Sequence:

>RC222309 ORF sequence
 Red=Cloning site Blue=ORF Green=Tags(s)

TTTTGTAATACGACTCACTATAGGGCGGCCGGGAATTCGTCGACTGGATCCGGTACCGAGGAGATCTGCC
 GCC**CGCATCGCC**

ATGATAATGTGGAACACGCAGCACAAAGCTCGGCTGGAACGCCGGTCACTGGCTCAACCAACCGGTGGC
 GTTTGCCCAAACAGCCTTTCTCTGGGGACTGCTCTCACTTTCCAGATGTGCAAGGCTCTGAGCATAGA
 CTTTGAGGAAGCTTTGAGGAACCCAGACAGTTATGCATTTACAAATCCAGAAGTTTTCTTTGAGAAT
 TTCAAGAACAAGGACATCCAAAGTGGGGAAGCAGATGTGATTCTCGAGTGCCTGGCTTCAAATGGGAGC
 TCCATCAGCCCCAGCTTTTTAGTCTGAGACCTTGCCAAAGCTCTACCTGAAAGCCCTGGCGCAGGGCAC
 CACACACCCCTGAGGGAGCTGGAGGAGCTTCTGCGAGCTCAATCACCTAAGAAGACCAAGAAAAATCC
 CCTGCAAAGAGGATCATCTTCTTGAAGATCAATGACCCACTGGTCACTAAAGTCGCCTTCGCCACGG
 CCCTGAAGAACCTCTACATGAGTGAGGTGGAGATTAACCTGGAAGACCTACTGGGAGTGTGGCTCCGC
 CCACATCTCCAGTTCAGTGGCCTGTTTCAAAGGTGCGTGGATGTGATGATAGCCAGACTCAAGCCAAGC
 ACCATCAAGAAATTCACGAGGCCGGCTGCAAGTACAAGGAAGAGCAGCTCACCACCGGCTGCGAGAAGT
 GGCTGGAATGAACTTGTTCTCTAGGGGGACGCAGATCCACCTCCACAAAATCCACAGGACCTGCT
 CCACAAAGTGTGAAGTCCCCAGGTTATTTACCTTTAGTGAATTCATCTTCTGAAAACAATGCTTTTG
 TGGGTCTTCTGCAACTGAACTACAAGATTCAGGCAATCCGACTTATGAAACCGTGATGACATTTTTTA
 AGAGCTTCTGAGAAGTGTGCTTTCTGGACCGGACATAGGACGGAGCTTGGGCCGCTTCTCTCTG
 CTTGCGTCTGCACGGCATACCAAAGGCAAGGATCTGGAGGTGCTGCGGCACCTTAACCTTCCAGAG
 TCATGGCTCGACCAGGTTACAGTCAACCATTACCACGCACTGGAGAATGGGGCGACATGGTCCACCTGA
 AAGACTTAACACCCAGGCTGTGAGATTTGGGCTGCTTTTAAACCAGGAGAATACAACCTTATTCGAAAAC
 GATTGCTCTATATGGATTCTTCTTAAAGATAAAGGGACTCAAACATGATACTACCTTATAGTTTTTAC
 ATGCGAGAATAAAGCACACAGACCTGGAATCTCCCTCTGCGGTCTACGAGCACAACCACGTGAGCTGC
 GAGCGGCACGCTGGTGAAGTATGAGATCAGAGCAGAGCCCTGGTTGACGGCAAGTGGCAGGAGTTCAG
 GACAAACCAGATCAAGCAGAAGTTGGGTTGACCACGTATCCTGCAAAAAGCCATACCTTAAAAATCCAA
 ACTGTGGGCATCCCAATCTATGTAAGTTTTGCATTATCTTCCAGCATCT

ACGCGTACGCGGCCGCTCGAGCAGAAACTCATCTCAGAAGAGGATCTGGCAGCAAATGATATCTGGATT
 ACAAGGATGACGACGATAAGGTTTAA

Protein Sequence:

>RC222309 protein sequence
 Red=Cloning site Green=Tags(s)

MIMSNTQHKARLERRVTGSTNRWRLPKQPFSGDLLSLSQMCKALSIDFEEALRNPDRLCISQIQKFFEN
 FKNKDIQSGEADVILECLGFKWELHQPQLFQSETLAKLYLKALAQTTHPLRELEELLRAQSPKKTKEKS
 PAKRIIISLKINDPLVTKVAFATALKNLYMSEVEINLEDLLGVLSAHILQFSGLFQRCVDVMIARLKPS
 TIKKFYEAGCKYKEEQLTTGCEKWLEMNLVPLGGTQIHLHKIPQDLLHKVLKSPRLFTESEFHLLKTMLL
 WVFLQLNYKIQAIPTYETVMTFFKSPENCCFLDRDIGRSLRPLFLCLRLHGITKGDLEVLRLHNFPE
 SWLDQVTVNHYHALENGGDMVHLKDLNTOAVRFGLLFNQENTTYSKTIALYGFFFKIKGLKHDTSYSFY
 MQRKHTDLESASVYEHNHVSLRAARLVKYEIRAEALVDGKWQEFRTNQIKQKFLTSSCKSHTLKIQ
 TVGIPIYVSFAFIFPAS

TRTRPLEQKLISEEDLAANDILDYKDDDDKV

Chromatograms:

https://cdn.origene.com/chromatograms/mk6560_c10.zip

Restriction Sites:

Sgfl-Mlul

Cloning Scheme:


ACCN: NM_144587

ORF Size: 1521 bp

OTI Disclaimer: The molecular sequence of this clone aligns with the gene accession number as a point of reference only. However, individual transcript sequences of the same gene can differ through naturally occurring variations (e.g. polymorphisms), each with its own valid existence. This clone is substantially in agreement with the reference, but a complete review of all prevailing variants is recommended prior to use. [More info](#)

OTI Annotation: This clone was engineered to express the complete ORF with an expression tag. Expression varies depending on the nature of the gene.

Components: The ORF clone is ion-exchange column purified and shipped in a 2D barcoded Matrix tube containing 10ug of transfection-ready, dried plasmid DNA (reconstitute with 100 ul of water).

Reconstitution Method:

1. Centrifuge at 5,000xg for 5min.
2. Carefully open the tube and add 100ul of sterile water to dissolve the DNA.
3. Close the tube and incubate for 10 minutes at room temperature.
4. Briefly vortex the tube and then do a quick spin (less than 5000xg) to concentrate the liquid at the bottom.
5. Store the suspended plasmid at -20°C. The DNA is stable for at least one year from date of shipping when stored at -20°C.

RefSeq: [NM_144587.5](#)

RefSeq Size: 1848 bp

RefSeq ORF: 1521 bp

Locus ID: 118663

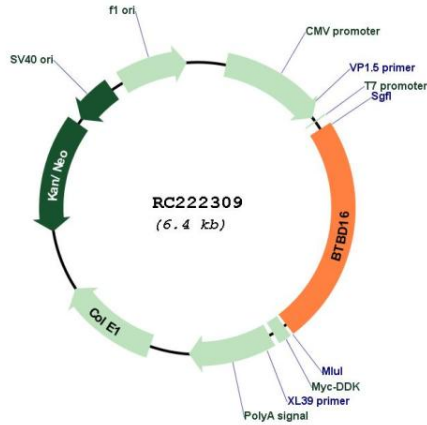
UniProt ID: [Q32M84](#)

Cytogenetics: 10q26.13

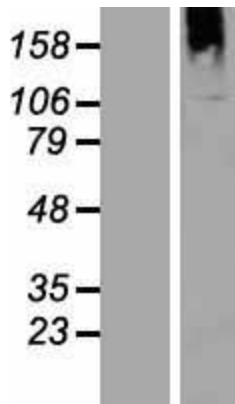
MW: 58.6 kDa

Gene Summary: This gene encodes a protein that contains a BTB/POZ domain. This domain mediates protein-protein interactions. A mutation in this gene may be associated with bipolar disorder. [provided by RefSeq, Sep 2016]

Product images:



Circular map for RC222309



Western blot validation of overexpression lysate (Cat# [LY408234]) using anti-DDK antibody (Cat# [TA50011-100]). Left: Cell lysates from untransfected HEK293T cells; Right: Cell lysates from HEK293T cells transfected with RC222309 using transfection reagent MegaTran 2.0 (Cat# [TT210002]).