

## Product datasheet for **RC222304**

### DEFB127 (NM\_139074) Human Tagged ORF Clone

#### Product data:

**Product Type:** Expression Plasmids  
**Product Name:** DEFB127 (NM\_139074) Human Tagged ORF Clone  
**Tag:** Myc-DDK  
**Symbol:** DEFB127  
**Synonyms:** bA530N10.2; C20orf73; DEF-27; DEFB-27; DEFB27; hBD-27  
**Mammalian Cell Selection:** Neomycin  
**Vector:** pCMV6-Entry (PS100001)  
**E. coli Selection:** Kanamycin (25 ug/mL)  
**ORF Nucleotide Sequence:** >RC222304 ORF sequence  
Red=Cloning site Blue=ORF Green=Tags(s)

TTTTGTAATACGACTCACTATAGGGCGGCCGGAATTCGTCGACTGGATCCGGTACCGAGGAGATCTGCC  
GCC**CGATCGCC**

ATGGGGCTCTTCATGATCATTGCAATTCTGCTGTTCCAGAAACCCACAGTAACCGAACAACTTAAGAAGT  
GCTGGAATAACTATGTACAAGGACATTGCAGGAAAATCTGCAGAGTAAATGAAGTGCCTGAGGCACTATG  
TGAAAATGGGAGATACTGTTGCCTCAATATCAAGGAAGTGAAGCATGTAAAAAATTACAAAGCCACCT  
CGTCCAAAGCCAGCAACTTGCCTGACTCTTCAAGACTATGTTACAATAATAGAAAATTTCCCAAGCC  
TGAAGACACAGTCTACA

**ACGCGT**ACGCGGCCGCTCGAGCAGAAACTCATCTCAGAAGAGGATCTGGCAGCAAATGATATCCTGGATT  
ACAAGGATGACGACGATAAGGTTTAA

**Protein Sequence:** >RC222304 protein sequence  
Red=Cloning site Green=Tags(s)  
MGLFMIIAILLFQKPTVTEQLKKCWNNYVQGHCRKICRVNEVPEALCENGRYCLNIKELEACKKITKPP  
RPKPATLALTLQDYVTIIEFNPSTKQST

**TR**TRPLEQKLISEEDLAANDILDYKDDDDKV

**Chromatograms:** [https://cdn.origene.com/chromatograms/mk6473\\_f06.zip](https://cdn.origene.com/chromatograms/mk6473_f06.zip)

**Restriction Sites:** Sgfl-Mlul



[View online »](#)

**Cloning Scheme:**


**ACCN:** NM\_139074

**ORF Size:** 297 bp

**OTI Disclaimer:** The molecular sequence of this clone aligns with the gene accession number as a point of reference only. However, individual transcript sequences of the same gene can differ through naturally occurring variations (e.g. polymorphisms), each with its own valid existence. This clone is substantially in agreement with the reference, but a complete review of all prevailing variants is recommended prior to use. [More info](#)

**OTI Annotation:** This clone was engineered to express the complete ORF with an expression tag. Expression varies depending on the nature of the gene.

**Components:** The ORF clone is ion-exchange column purified and shipped in a 2D barcoded Matrix tube containing 10ug of transfection-ready, dried plasmid DNA (reconstitute with 100 ul of water).

- Reconstitution Method:**
1. Centrifuge at 5,000xg for 5min.
  2. Carefully open the tube and add 100ul of sterile water to dissolve the DNA.
  3. Close the tube and incubate for 10 minutes at room temperature.
  4. Briefly vortex the tube and then do a quick spin (less than 5000xg) to concentrate the liquid at the bottom.
  5. Store the suspended plasmid at -20°C. The DNA is stable for at least one year from date of shipping when stored at -20°C.

**RefSeq:** [NM\\_139074.4](#)

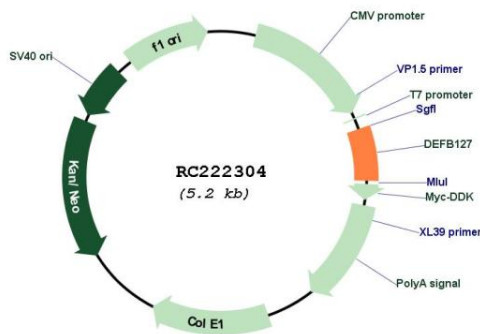
**RefSeq Size:** 536 bp

**RefSeq ORF:** 300 bp

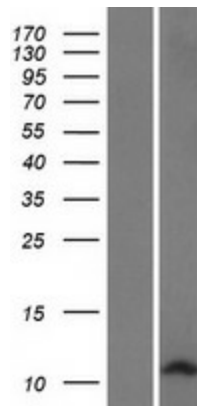
**Locus ID:** 140850

**UniProt ID:** [Q9H1M4](#)  
**Cytogenetics:** 20p13  
**Protein Families:** Secreted Protein  
**MW:** 11.3 kDa  
**Gene Summary:** Defensins are cysteine-rich cationic polypeptides that are important in the immunologic response to invading microorganisms. The antimicrobial protein encoded by this gene is secreted and is a member of the beta defensin protein family. Beta defensin genes are found in several clusters throughout the genome, with this gene mapping to a cluster at 20p13. [provided by RefSeq, Nov 2014]

### Product images:



Circular map for RC222304



Western blot validation of overexpression lysate (Cat# [LY408416]) using anti-DDK antibody (Cat# [TA50011-100]). Left: Cell lysates from untransfected HEK293T cells; Right: Cell lysates from HEK293T cells transfected with RC222304 using transfection reagent MegaTran 2.0 (Cat# [TT210002]).