

Product datasheet for RC222299

KIF21B (NM_017596) Human Tagged ORF Clone

Product data:

Product Type:	Expression Plasmids
Product Name:	KIF21B (NM_017596) Human Tagged ORF Clone
Tag:	Myc-DDK
Symbol:	KIF21B
Mammalian Cell Selection:	Neomycin
Vector:	pCMV6-Entry (PS100001)
E. coli Selection:	Kanamycin (25 ug/mL)
ORF Nucleotide Sequence:	>RC222299 representing NM_017596 Red=Cloning site Blue=ORF Green=Tags(s)

TTTTGTAATACGACTCACTATAGGGCGGCCGGGAATTCGTCGACTGGATCCGGTACCGAGGAGATCTGCCGCCCGATCGCC

ATGGCCGGCCAGGGGGACTGCTGCGTCAAGGTGGCCGTCAAGATCCGGCCCCAGCTGTGGAAGGAGAAGA
TTGAGGGTGTACATCTGTACCTCTGTTACCCCGGGAGAGCCCCAGGTCTGCTGGGGAAGGACAAGGC
CTTACCTATGACTTTGTCTTCGACCTGGACACCTGGCAAGAACAGATCTATTCCACCTGTGTGAGCAAG
CTCATCGAGGGCTGCTTCGAGGGCTATAATGCCACGGTGTGCGCTATGGGCAGACGGGGCCGGGAAGA
CGTACACCATGGGCACTGGCTTTGACATGGCAACGTCCGAGGAGGAGCAGGGCATCATCCCGAGGGCCAT
CGCACACCTCTTTGGGGCATTGCCGAGCGCAAGCGCCGGGCACAGGAGCAGGGCGTGGCTGGACCTGAG
TTCAAAGTCAGCGCCAGTTTCTGGAGCTCTACAACGAGGAGATCCTTGACCTGTTTGACAGCACCCGTG
ACCCTGACACCCGCCACCGCAGGTCCAACATCAAGATCCACGAGGACGCAACCGTGGCATCTACACCAC
TGGCGTCACTTCTCGCCTCATCCACTCCCAGGAGGAGCTGATCCAGTGCCTGAAGCAGGGGGCCCTGTCC
CGCACACAGCCAGCACCCAGATGAACGTGCAGAGCTCACGCTCCACGCCATCTTACCATCCACCTGT
GCCAGATGCGCATGTGCACCCAGCCGACCTGGTGAATGAGGCGGTGACTGGGCTTCTGATGGTACACC
TCCCTCGAGTGAATGAGACACTACTGCTAAGTTTCACTTTGTGGACCTGGCCGGCTCAGAGCGGCTG
AAGCGGACAGGGGCTACTGGCGAGCGGGCAAGGAGGGCATCTCCATCAACTGTGGCCTGCTGGCCTTGG
GCAATGTGATCAGCGCCTTAGGGGACCAGAGCAAGAAGGTGGTGCACGTTCCCTACAGGGACTCCAAGCT
CACTCGGCTCCTCCAGGATTCGCTGGGGGGCAACAGCCAGACCATCATGATCGCCTGTGTGAGCCCTCA
GACCGAGATTTTATGGAGACCTCAACACACTCAAATATGCCAATCGGGCCCGCAACATCAAGAACAAGG
TGGTAGTGAACAGGACAAGACCAGCCAGCAAATCAGTGCCTGCGGGCTGAGATTGCTCGGCTGCAGAT
GGAGCTGATGGAGTAAAGCGGGCAAGCGAGTATAGGAGAGGATGGCGCTGAGGGCTATAGTATCTG
TTCGAGAGAATGCCATGCTACAGAAGGAGAATGGGGCCCTGCGGCTGCGGGTGAAGCCATGCAGGAGG
CCATCGATGCCATCAACAACCGGTCAACAGCTCATGAGCCAGGAGGCAACCTGCTGTAGCCAAAGGC
CGGCGATGGCAATGAGGCCATTGGTGCCTGATCCAGAACTACATCCGGGAGATCGAGGACTACGGACT
AAGCTTCTAGAGAGTGAAGCCATGAACGAGTCCCTGCGCCGAGCCTCTACGGGCTCGGCTAGGAGCC
CCTACTCCCTGGGTGCTTCTCCAGCCGCCCGGCTTCCGGGGCAGCCCTGCCAGCTCCATGGAGGATGC



[View online »](#)

CTCGGAGGTGATCCGCAGGGCCAAGCAGGACCTGGAGCGGCTAAAGAAGAAGGAGGTCAGGCAGCGGAGG
AAGAGCCCCGAGAAGGAAGCCTTCAAAAAGAGGGCAAACTCCAACAGGAGAACAGCGAGGAGACGGATG
AGAACGAGGCGGAGGAGGAGGAGGAAGAGCGAGACGAGAGTGGCTGTGAGGAGGAGGAAGGGCGCGAGGA
TGAAGATGAGGACTCGGGCAGTGAAGAGAGCCTGGTGGACTCAGACTCAGACCCCGAGGAGAAGGAGGTG
AACTTCCAGGCGGACCTGGCCGACCTGACTTGTGAGATCGAAATCAAGCAGAAGCTGATCGACGAGCTGG
AGAACGCCAGCGGCGGTTGCAGACGCTCAAGCACCAGTATGAGGAAAAGCTGATTCTGCTGCAGAACAA
GATCCGAGACACACAGCTGGAGCGGACCGTGTGCTGCAGAACCTCAGCACCATGGAGTGCTATACTGAG
GAGAAGGCCAACAAAGATCAAGGCAGACTATGAGAAGAGGCTGCGGGAGATGAACCGGACCTGCAGAAGC
TGACGGCCGCCAGAAAAGACACGCCCGCTGCTTAAGAACCAGTCGCGCTACGAGAGGGAGCTGAAGAA
GCTACAGGCCGAGGTGGCTGAGATGAAGAAGGCCAAGGTGGCCCTGATGAAGCAGATGCGTGAGGAGCAA
CAGCGGCGGCGGCTAGTGGAGACCAAGAGGAACCGGGAGATCGCACAGCTCAAGAAGGAGCAGCGGCGAC
AGGAGTTTCAGATCCGAGCTCTGGAGTCCAGAAGCGGCAGCAGGAGATGGTCTGAGGAGGAAGACCCA
GGAGTTTCTGCACTGAGGCGCCTGGCCAAGCCATGTCTGAGCGGGTGGCAGGGCGTGCAGGACTAAAG
CCACCCATGCTGGACTCTGGGGTGAAGGTGTCGCCAGCACTACCTCATCTGAGGCTGAATCAGGGGCC
GCTCTGTCTCCAGCATCGTGCAGCAGTGAACCGCAAAATCAACCACTTCTTGGGGGACCATCTGCGCC
CACTGTCAATGGACCCCTGCTGCCGAAAAGAAGTCCAGAAGAAGGGGGCCAGCCAGAGCTTCAGTAAG
GCGGAAGGCTCAAGTGGCAGTCCCTGGAGCGACGGATCATTGACATCGTCATGCAGAGAATGACCATTTG
TCAACCTGGAGGCTGACATGGAGCGGCTCATCAAGAAAAGGGAGGAGCTGTTCTCTGCAAGGAGGCACT
GCGGAGGAAGCGGGAGCGGCTGCAGGCTGAGAGCCCCGAGGAAGAGAAGGGGCTGCAGGAGCTGGCTGAG
GAGATCGAGGTGCTGGCAGCCAACATTGACTACATCAATGACGGCATCACCGACTGCCAGGCCACCATCG
TGCAGCTGGAGGAGACCAAGGAGGAGCTGGACTCCACAGACACATCCGTGGTCAACAGCTCTGCTCCCT
GGCTGAAGCCCGCTCCTGCTAGACAACCTCCTCAAGGCATCCATTGACAAGGGGCTGCAAGTGGCACAA
AAGAGGCCAGATCCGGCTGTTGGAGGGCCGACTGAGGCACGGATATGGCAGGCTCTCCAGAAC
ATCTGCTCCTGGACGCCCTGCGTGAGAAGGCTGAAGCTCACCCGAGCTGCAGGCCCTCATCTACAATGT
GCAGCAGGAGAATGGCTACGCCAGCACAGATGAGGAGATCTCAGAGTTCTCTGAGGGCAGCTTCTCCAG
TCATTCACCATGAAAGGCTCCACCAGCCATGACGATTTCAAGTTCAAGAGCGAGCCCAAACCTGTCTGCC
AAATGAAAGCTGTGTCGGCTGAGTGCCTGGGCCCCCACTGGATATCTCCACCAAGAACATCACCAAGTC
CCTGGCTCCCTCGTTGAGATCAAAGAGGACGGAGTGGGCTTCTCTGTCCGAGACCCCTATTACCGGGAC
AGGGTCTCGGCACCGTCACTGCTGCTACCCGGGGCAGCACTTCCCTAGGCAATCTCGAGCCACAGAGA
CGTCCCCGCTGACGAGAAGGAAGTCTACGACCGAGGGCAGCCATTAGGTCCACAGATGTGGGATTCAC
ACCCCCATCATCCCTCCCACTCGGCCCGCAATGACCGCAATGTCTTCTCTGCTCACCAGTAATCAG
AGCCAGGGGTGACGCTGGACAAGGGCATCATCTCCCGGTTGGAGGAGCCAAGGTTGCAGGACGGCCC
CACTGCAGTGTGTCTCCATGGCCGAAGGCCACACCAAGCCATCCTCTGCCTGGATGCCACAGATGAGTT
GCTATTCACAGGGTCAAAGACCGAAGCTGCAAGATGTGGAACCTGGTTACGGGACAGGAGATCGCAGCT
CTAAAGGGCCACCCCAACAACGTGGTCTCCATCAAGTACTGCAGCCACTCGGGGCTTGTGTTCTCCGTGT
CCACCTCTACATCAAGGTGTGGACATCCGGGACTCAGCCAAGTGCATTGCGACTCTCAGTCTCCGGG
CCAGGTGATCTCAGGGGATGCCTGTGCCCCACATCCACCGTGCATCACCAGTGTGCTCAGGGCAGCAT
CAGATCAACCAGATCGCCCTCAGCCCTCGGGCACCATGCTGTACGCCGCTCGGGCAATGCCGTCCGCA
TCTGGGAGCTTAGCAGGTTCCAGCCTGTGCGCAAGCTGACTGGCCACATCGGCCCTGTGATGTCCCTGAC
GGTCAACCAGACGGCCAGCCAGCATGACCTCGTGGTACTGGCTCCAAGGACCACTACGTTAAGATGTTT
GAGCTGGGCGAGTGTGTGACGGGACCATCGGCCCACTCACAACCTCGAGCCCCGCACTACGATGGCA
TCGAGTGTCTCGCCATCCAGGGAGACATCCTGTTCAAGTGGCTCCCAGATAACCGCATCAAGAAGTGGGA
CCTAGACCAGCAGGAGCTCATCCAGCAAATCCCCAATGCGCACAAAGGACTGGGTGTGCGCCCTGGCTTC
ATCCCGGGCCGCCCATGCTGCTCAGCGCTGCCGTGCGGGTGTATCAAGGTCTGGAACGTGGACAAC
TCACACCCATCGGTGAGATCAAGGGCCACGACAGTCCCATCAATGCCATCTGCACCAATGCCAAGCATAT
CTTCACAGCTCCAGTACTGCCGGTAAAGTTGTGGAATTACGTCCTGGACTACCCCTGCCTTCTCT
CGCGAGTCTGGCCATAAAGGGCCGCGCCACCACCTGCC

ACGCGTACGCGGCGGCTCGAGCAGAACTCATCTCAGAAGAGGATCTGGCAGCAAATGATATCCTGGATT
ACAAGGATGACGACGATAAGGTTTAA

Protein Sequence: >RC222299 representing NM_017596
 Red=Cloning site Green=Tags(s)

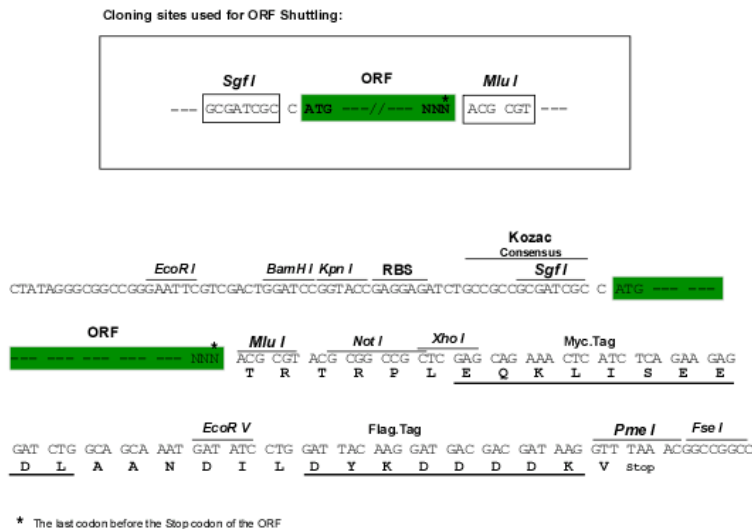
MAGQGDCCKVAVRIRPQLSKEKIEGCHICTSVTPGEPQVLLGKDKAFTYDFVFDLDTWQEQIYSTCVSK
 LIEGCFEGYNATVLAYGQTGAGKTYTMTGTFDMATSEEEQGIIPRAIAHLFGGIAERKRRAEQGVAGPE
 FKVSAQFLELYNEEILDLDSTRDPDTRHRRSNIKIHDANGGIYTTGVT SRLIHSQEELIQCLKQGALS
 RTTASTQMNQSSRSIAIFTIHLQMRMCTQPDLYNEAVTGLPDGTPPSSEYETLTAKFHFDLAGSERL
 KRGTGATERAKEGISINCGLLALGNVISALGDQSKKVVHVPYRDSKLRLLQDSLGGNSQTIMIACVSPS
 DRDFMETLNTLKYANRARNIKNKVVVNQDKTSQQISALRAE IARLQMELEMEYKAGKRVIGEDGAEGYSDL
 FRENAMLQKENGALRLRVKAMQEAIDA INNRVTQLMSQEANLLLAKAGDGNEAIGALIQNYIREIEELRT
 KLLLESEAMNESLRRSLSRASARSPYSLGASPAAPAFGGSPASSMEDASEVIRRAKQDLERLKKKEVRQR
 KSPEKEAFKKRAKLQENSEETDENEAE EEEEEERDESGCEEEEGREDEDEDSGSEESLVSDSDPREEKEV
 NFQADLADLTCEIEIKQKLIDELNSQRRLQTLKHQYEEKLILLQNKIRDQTLERDRLQNLSTMECYTE
 EKANKIKADYEKRLREMNRLQKLQAAQKEHARLLKNQSRYERELKKLQAEVAEMKKAKVALMKQMRREEQ
 QRRRLVETKRNREIAQLKKEQRRQEFQIRALESQKRQEMVLRRTQEVSA LRRLAKPMSERVAGRAGLK
 PMLDSGAEVSATTSSEAESGARSVSSIVRQWNRKINHFLGDHPAPT VNGTRPARKKFQKKGASQSF SK
 AARLKWQSLERRIIDIVMQRMTIVNLEADMERLIKREELFLLQEALRRKRERLQAESPEEEKGLQELAE
 EIEVLAANIDYINDGITDCQATIVQLEETKEELDSTDTSVVSSCSLAEARLLLDNFLKASIDKGLQVAQ
 KEAQIRLLEGRRLQDTMAGSSQNHL LLDALREKAEAPHELQALIYVNVQENG YASTDEEISEFSEGSFSQ
 SFTMKGSTSHDDFKFKSEPKLSAQMKAVSAECLGPPLDISTKNITKSLASLVEIKEDGVGFSVRDPYYRD
 RVSRTVSLPTRGSTFPRQSRATE SPLTRRKS YDRGQPIRSTDVGFTPPSPPTPRPNDRNVFSRLTSNQ
 SQGSALDKGIISPVGAKGARTAPLQCVSMAEGHTKPI LCLDATDELFTGSKDRSCKMWNLV TGQEI AA
 LKGHPNNVVSIIKYCSHGLVFSVSTSYIKVWDIRD SAKCIRTLTSSGQVISGDACAATSTRAITSAQGEH
 QINQIALSPSGTMLYAASGNAVRIWELSRFQPVGKLTGHIGPVMCLT VTQTASQHDLVVTGSKDHYVKMF
 ELGECVTGTIGPTHNFEPHYDIECLAIQGDILFSGSRDNGIKKWDLDQQELIQQIPNAHKDWVICALAF
 IPGRPMLLSACRAGVIKVVNVDNFTPIGEIKGHDSPINAICTNAKHIFTASSDCRVKLVWVYVPLTPCLP
 RRVLAIKGRATTL P

TRTRPLEQKLISEEDLAANDILDYKDDDDKV

Chromatograms: https://cdn.origene.com/chromatograms/mk8041_c12.zip

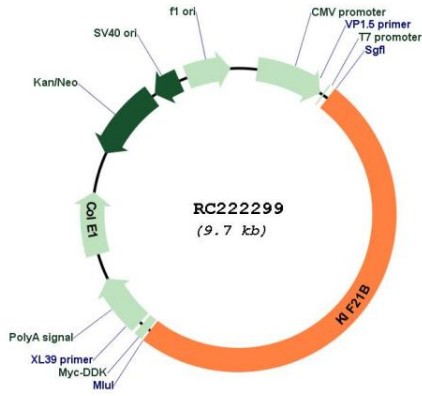
Restriction Sites: Sgfl-MluI

Cloning Scheme:

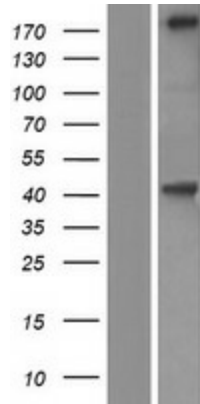


ACCN:	NM_017596
ORF Size:	4872 bp
OTI Disclaimer:	The molecular sequence of this clone aligns with the gene accession number as a point of reference only. However, individual transcript sequences of the same gene can differ through naturally occurring variations (e.g. polymorphisms), each with its own valid existence. This clone is substantially in agreement with the reference, but a complete review of all prevailing variants is recommended prior to use. More info
OTI Annotation:	This clone was engineered to express the complete ORF with an expression tag. Expression varies depending on the nature of the gene.
Components:	The ORF clone is ion-exchange column purified and shipped in a 2D barcoded Matrix tube containing 10ug of transfection-ready, dried plasmid DNA (reconstitute with 100 ul of water).
Reconstitution Method:	<ol style="list-style-type: none"> 1. Centrifuge at 5,000xg for 5min. 2. Carefully open the tube and add 100ul of sterile water to dissolve the DNA. 3. Close the tube and incubate for 10 minutes at room temperature. 4. Briefly vortex the tube and then do a quick spin (less than 5000xg) to concentrate the liquid at the bottom. 5. Store the suspended plasmid at -20°C. The DNA is stable for at least one year from date of shipping when stored at -20°C.
RefSeq:	NM_017596.4
RefSeq Size:	9895 bp
RefSeq ORF:	4875 bp
Locus ID:	23046
UniProt ID:	O75037
Cytogenetics:	1q32.1
Protein Families:	Druggable Genome
MW:	181.1 kDa
Gene Summary:	This gene encodes a member of the kinesin superfamily. Kinesins are ATP-dependent microtubule-based motor proteins that are involved in the intracellular transport of membranous organelles. Single nucleotide polymorphisms in this gene are associated with inflammatory bowel disease and multiple sclerosis. Alternatively spliced transcript variants encoding multiple isoforms have been observed for this gene. [provided by RefSeq, Nov 2011]

Product images:



Circular map for RC222299



Western blot validation of overexpression lysate (Cat# [LY413686]) using anti-DDK antibody (Cat# [TA50011-100]). Left: Cell lysates from untransfected HEK293T cells; Right: Cell lysates from HEK293T cells transfected with RC222299 using transfection reagent MegaTran 2.0 (Cat# [TT210002]).