

Product datasheet for RC222295

APXL (SHROOM2) (NM_001649) Human Tagged ORF Clone

Product data:

Product Type:	Expression Plasmids
Product Name:	APXL (SHROOM2) (NM_001649) Human Tagged ORF Clone
Tag:	Myc-DDK
Symbol:	APXL
Synonyms:	APXL; HSAPXL
Mammalian Cell Selection:	Neomycin
Vector:	pCMV6-Entry (PS100001)
E. coli Selection:	Kanamycin (25 ug/mL)
ORF Nucleotide Sequence:	>RC222295 representing NM_001649 Red=Cloning site Blue=ORF Green=Tags(s)

TTTTGTAATACGACTCACTATAGGGCGGCCGGAATTCGTCGACTGGATCCGGTACCGAGGAGATCTGCC
GCCCGCATCGCC

ATGGAGGGCGCCGAGCCCGCGCGGGCCGAGCGCCTGGCCGAGGCCGAGACGCGGGCGGGCGACGGCG
GGCGCCTGGTGGAGGTGCAGCTGAGCGGGCGGCCCGTGGGGCTTACCCCTGAAGGGCGGCCGCGAGCA
CGGCGAGCCGCTGGTCAACCAAGATTGAAGAGGGCAGTAAAGCCGCGGGTGCACAAGTTACTGGCT
GGAGATGAGATCGTCGGCATCAATGACATTGGTCTCTCAGGGTTAGACAGGAAGCGATTTGCCCTGGTGA
AGGGGTCCATAAGACCCTGAAGCTGGTCGTCAAAGGAGGAGCGAGCTGGGCTGGAGGCCTCACTCCTG
GCATGCCACCAAGTTCTCTGACAGCCACCCGAGCTAGCGGCCTCCCATTCACCTCCACCAGCGGCTGT
CCTTCCTGGTCCGGCCGACACCACGCGAGTTCTTCTCCACGACCTGTCCAGTTCTGGGAGCAGACGA
ACCTACAGCGCACCTTAGATCACTTCAGCTCCTTGGGAGCGTTGACAGCCTGGACCACCCCTCCAGTCG
CCTCTCGGTGGCCAAGTCCAACAGCAGCATCGACCACCTGGGCAGCCACAGCAAGCGGACTCGGCCTAC
GGCTCCTTCTCCACCAGCTTAGCACTCCTGACCACACCTTGCCAAAGCCGACAGTCTCCGACAGAGA
ACATCCTCTACTGTGGGCCTCTGGGAGGCTCCCAGGAGGGTGGCCGGCAGGCCAGGCCGAGGCCGCA
CCCTCAGGGCTCGGAGGAGAAGCTCAGTTGTTTCCCGCCAGGGTCCCGGTGACAGCGGCAAAGGCCCC
AGGCCAGAGTACAATGCCGAGCCCAAGCTGGCTGCCCTGGGAGTCCAATTTTGGGCCAGTCTGGTATG
TTCCCGATAAGAAGAAAGCACCATCATCCCACCTCCTCCCTCCCTCCCGAGTGCAGCTTTGC
TGCCACCAAGAGCCACGAGAAGGCCAGGGCCCTGTGTTCTCAGAGGCGGCTGCGGCACAGCACTTTACG
GCCCTGGCCAGGCTCAGCCTCGTGGTACCAGGAGACCAGAGCTACCGATCGGCCTTGGAGGTCAGCAC
ACCCGGGGAGCCTCGGAAGGGATCGGGAGGCCCGGGCTGCCACAGGAGGCCACGCAGACGGCAGCTG
GCCGCCCTCAAGGATGGAGTTCCAGTAGGCTGCAGGCCTCTGTCCAGCTCAGATGTGCGCTTCCCT
CAGTCTCCTCATAGCGCCGACACCCCTCCCTATACAGCGACCACAGCCCTCTGTGCTGACAGCCTTG
GGCAGGAGCCAGGGGCTGCCAGTTCCAGAACGACAGCCCTCCTCAGGTGAGGGGGCTCAGCAGCTGTA
CCAGAAGCTGGGAGCGGCTGGCAGGGTCCCGGCCCTGTGTGACAGGAGACCTGCAAGCAGCACAGCTC



TGGGCGGGATGCTGGCCTTCTGACACAGCCCTTGAGCCCTCGAGAGTCTTCCCCACCCACGGTGGGCC
 AGAGCCCACGCCATCACCTACCTCAGCCTGAGGGTCTCCGGATGCCCGGAGACAGGACGGTGTACCC
 GCTGGACAAAGGGGCGAGGGCTGCTCCGCGGGAGCCAGGAGCCTCCCAGGGCCAGCCGTGCAGAAAA
 GCCAGCCAGAGGCTGGCAGCCAGCATCAGTGGCAGATGGGGAGAGCAGCAGGATCTGCCCGCAGGAGA
 CGCCCCGTTGCACTCCCTGACCAGGAGGGGAAGCGCCGGCTGAGAGCAGTCCAGAGGACAGCGCCAC
 CAGACCCACCCTGTCGACGCCACGTGGGCAAGCCACCCGAAGAAGCGACCCGTTTGCACCACCCTG
 CGGAATGAGATCCAGATGCATAGAGCCAAGCTGCAGAAGAGCCGGAGCACAGTGGCTCTGACTGCAGCA
 GGGAGGCGGAGGATGGCACCGGCGCTGGAGGGCCGGTTGGGAGGTGGCACCCAGGAAGGACCCCTCGC
 TGGCACCTATAAAGACCCTGAAAGAGGCCAAGCCCGGTCTGAGGGCCACGTCCTTCAAGCGCCG
 GACTTGGACCCCAACCCAGGAGACCTATAACCCGGAGTCACTGGAACACCGGATGGGGATCCAGACTG
 TCCCCACTTCTGGGAGGCAGGCTGGCCAGCCACCCTCATCTACAAGTGGCGGCCCCACCCGCCCG
 CATCGGAGGCCGAGACGGTTCACAGCTGAGCAGAAATGAAGTCTACTCGGAACCTGAGAAGTGAAC
 GAGGTGGCCTCACGAGGGGCTACAGTCTCACCAGCACCAGGACATCTGAGGATACTGTGGCAGCT
 TTGCTGACAGGTGAAGTTTTTTGAGGAAACGAGCAAACCTGTTCCCAGAGGCTGCCAGAAGCAAGC
 TCTTACGGAATCCCAGAGACAAGCCAGAGAGCCGCGGACAGCGGGCCGCACATGTGAGGGCACGGAG
 CCCTGGTCGCGCACCCCTCCCTGGGGACAGCCTCAACGCTCACAGCGAGCGAGAAGGACGGGACTT
 CAGACCTGCCCGGAGGCTCGGCACCTTTCAGAGTATCAGGCCTCTTGAAGGAACAGAGGAAACCTCT
 GGAGGCCAGGAGCTCTGGGCGCTGCCACTCAGCGGATGACATCCTGGATGTGAGCCTGGACCCACAGGAG
 AGGCCGACGACGTTTATGGGAGTCCCGTCTTACCCTCCACAGACCACTACAAGCAGGAAGCTTCTG
 TCGAATGCGAAGGCAGGCGAGGGACCCCGGCGAGCCAGAGAAGAGTTCCTCCGAGTCCGGGCCGA
 GGAGGGACAGTCCACGCCAGACAAGCAGATGCCAGTGTGGGAAGGCAGCCAGGATCACAGCAGCAC
 CCACCGAGTCAGAAGGCACCCGAACCCACCACATTTCTGAACTATCTACTGCCGGGACCCCGAGAC
 TGCCCCGGGAGGGCCGGGCGGAGCGGGAACCTACCTCGAGATTATAGATACTCGGAGGAGAGCACCCC
 AGCAGACTTGGGACCCGAGCCAGAGCCCTGGCTCACCCTGCATGCTCGAGGACAAGACTCGTGCCCA
 GTGAGCTCAGCCCTGCTCTCAAGAGGCCAGCCACAGAGGCCACCGCCACCAAGCGGAGCCAGGA
 GATACAGGGCCACAGACGGCGCACCTGCTGACGCCCCGTTGGCGTCTCGGCAGGCCCTTCCCAACGCC
 ATCCCCTGCGTCCCTGGATGTGTATGTGGCCCGCTGTCCCTCTCCACAGCCCTCTGTGTTACAGCAGT
 GCCCAGCCCAGGACACCCGAAGGCCACTGTCTGTGAGCGTGAAGCCAGCATGTGAGCGGGGACGCAT
 CACGTCTCTGCCAGAAGCACTGCTCCCTCCAAGCAGCAGCACCTGCGCTGCAGACGGCCACCATGGA
 GACCTCGCGCTCCCCCTCGCCCCAGTTCGCCCCCAGAACTGACGGACAACCTCCCCTGCTCATCCAG
 GATGAGGATTAACCAGAATTGAGCGGGTGTGGAACAACAACACCAGGTGAAGTGGTGCCATCAAGA
 TCGTGCACCTCGGAGAGCCAGCCAGAGAAGGAGAGCCGCCAGAGCCTGGCATGCCCGCCGAGCCACCTGC
 CCTGCCCCACGGGCTGGAGAAAGACCAGATCAAGACGCTGAGCACATCTGAGCAGTTCTACTCGCGTTC
 TGTCTGTACACGCGGCAGGGTGTGAGCCCGAGGCCACATAGGGCCAGCCGGCTGAGCCCCAGCCCC
 TGGGCACCCAGGTGCCCCCGAGAAAGACCCTGCACCTCCCCTCCAGGGCTCAGCTACATGAAGGCCAA
 AGAGAAGACTGTGAAGACCTGAAGTCGGAGGAGCTGGCCAGGGAGATCGTGGGAAGGATAAGTCCCTG
 GCCGACATCCTGGATCCCAGTGTGAAGTCAAAACCACTATGGACTTGATGGAAGGCATCTTCCCAAAG
 ACGAGCACCTCCTGGAAGAAGCCAGCAACGGAGGAAGCTGCTCCCCAAAATCCCCTCTCTAGAACGAC
 AGAGGAGAGGAAAGAGGAGCCAGCGTGCCTGCGGCCGTGTCCTGGCCACCAATTTACCTACTACAGC
 ACGTCCGCCCCAAGGCGGAGCTGCTGATCAAGATGAAGGACCTGCAGGAGCAGCAGGAGCACGAAGAGG
 ATTCGGGAAGCGACTTGGACCACGACCTGTGCGTGAAGAAGCAGGAGCTCATCGAGAGCATCAGCCGAA
 GCTGCAGGTGCTCCGGAGGCCCGCAGAGCCTGCTGGAGGACGTGCAGGCCAACACCGTCTGGGGCC
 GAGGTGGAGGCCATCGTGAAGGCGTCTGCAAGCCAGCGAGTTTGACAAGTTCGGATGTTTATTGGAG
 ACCTGGACAAAGTGGTGAACCTCTGCTGCTGCTGTCAGGCCCTGGCCGGGTGGAGAATGCCCTCAA
 TAATTTGGACGACGGCGTCTCCCGGTGATCGGCAACTGCTTGGAGAAGCAGAGTCTGATCCAG
 CAGCACGAGGACCCAAGGAGCTCAAGGAGAACCTGGACCGCCGAGCGCATCGTCTTTGACATTTTGG
 CCAACTATCTGAGCGAGGAGAGCCTCGCGACTATGAGCACTTCTGTAAGATGAAGTCGGCCCTCATCAT
 CGAGCAGCGGGAGCTGGAAGATAAAATCCACCTTGGTGAAGAGCAGCTGAAGTGTATTGGACAGCCTT
 CAGCCCGAAAGGGGCAA

ACGCGTACGCGGCCGCTCGAGCAGAACTCATCTCAGAAGAGGATCTGGCAGCAAATGATATCCTGGATT
 ACAAGGATGACGACGATAAGGTTTAA

Protein Sequence: >RC222295 representing NM_001649
 Red=Cloning site Green=Tags(s)

MEGAEPRARPERLAEAETRAADGGRLVEVQLSGGAPWGF TLKGGREHGEPLVITKIEEGSKAAAVDKLLA
 GDEIVGINDIGL SGRFQEAICL VKGSHKTLKLVKRRSELGWRPHSWHATKFSDSHPELAASPFTSTSGC
 PSWSGRHHASSSSHDLS SWEQTNLQRTLDHFSSLSGVDSDHPSSRLSVAKSNSSIDHLGSHSKRDSAY
 GSFSTSSSTPDHTLSKADTSSAENILYTVGLWEAPRQGGRQAQAAGDPQGSEEKLSCFPPRPVPGDSGKGP
 RPEYNAEPKLAAPGRSNFGPVWYVPDKKKAPSSPPPPPLRSDSFAATKSHEKAQGPVFSEAAAAQHFT
 ALAQAQPRGDRRPEL TDRPWSAHPGSLGKSGGPGCPQEAHADGSWPPSKDGASRLQASLSSSDVRF
 QSPHSGRHPPLYSDHSPLCADSLGQEPGAASFQNDSPQVVRGLSSCDQKLGSGWQGP RPVCVQGLDQAAQL
 WAGCWPSDTALGALESLPPPTVGQSPRHLPQEGPPDARETGRCYPLDKGAEGCSAGAQP PRASRAEK
 ASQRLAASITWADGESSRICPQETPLLHSLTQEGKRRPESSPEDSATRPPPFDAHV GKPTRRSDRFATTL
 RNEIQMHRAKLQKSRSTVALTAAGEADGTGRWRAGLGGGTQEGPLAGTYKDHLKEA QARVLRATSFKRR
 DLDPNPGDLYPESLEHRMGDPDTPHFWEAGLAQPPSSTSGGPHPPRIGRRRFTAEQKLSYSEPEKMN
 EVGLTRGYSHPHQHPRTSEDTVGTFA DRWKF FEETSKPVPQRPAQKQALHGIPRDKPERPRTAGRTCEGTE
 PWSRTTSLGDSLNAHSAAEKAGTSDLPRLGTF AEYQASWKEQRKPLEARSSGRCHSADDILDVSLDPQE
 RPQHVHGRSRSSPSTDHYKQEASVELRRQAGDPGEPREELPSAVRAEEGQSTPRQADAQCREGSPGSQQH
 PPSQKAPNPPTFSEL SHCRGAPELPREGRGAGTLPRDYRYSEESTPADLGPRAQSPG SPLHARGQD SWP
 VSSALLSKRPAPQRPPPKREPRRYRATDGAPADAPVGV LGRPFPTPSPASLDVYVARLSL SHSPSVFSS
 AQPQDTPKATVCEGRSQHVSGDASRPLPEALLPKQQLHLRQTATMETSRSPPQFAPQKLTDKPPLLIQ
 DEDSTRIERVMDNNTTKMVPKIVHSESQPEKSRQSLACPAEPPALPHGLEKDIKTLTSTSEFYSRF
 CLYTRQGAEPHRAQPAEPQLGTQVPPEKDRCTSP PGLSYMKAKEKTVEDLKSEELAREIVGKDKSL
 ADILDPSVKIKTTMDLMEGIFPKDEHLL EEAQRRKLLPKIPSPRSTEERKEEPSVPAVSLATNSTYYS
 TSAPKAELLIKMKDLQEQQEHEEDSGSDL DHDLSVKKQELIESIRKQLVLRARESLLEDVQANTV LGA
 EVEAIVKGVCKPSEFDKFRMFIGDLKVVNLLLSL SGRLARVENALNNDGASPGDRQSLL EKQRVLIQ
 QHEDAKELKENLDRRERIVFDILANYLSEESLADYEHFVKMSALII EQRELEDKIHLGEEQLKCLLDLSD
 QPERGK

TRTRPLEQKLISEEDLAANDILDYKDDDDKV

Chromatograms: https://cdn.origene.com/chromatograms/mg8006_b09.zip

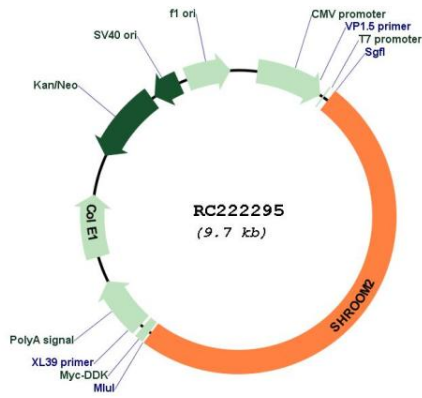
Restriction Sites: SgfI-MluI

Cloning Scheme:

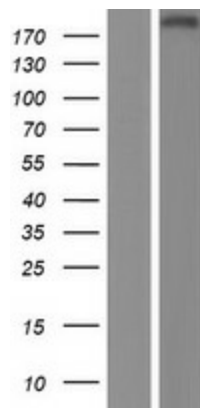


ACCN:	NM_001649
ORF Size:	4848 bp
OTI Disclaimer:	The molecular sequence of this clone aligns with the gene accession number as a point of reference only. However, individual transcript sequences of the same gene can differ through naturally occurring variations (e.g. polymorphisms), each with its own valid existence. This clone is substantially in agreement with the reference, but a complete review of all prevailing variants is recommended prior to use. More info
OTI Annotation:	This clone was engineered to express the complete ORF with an expression tag. Expression varies depending on the nature of the gene.
Components:	The ORF clone is ion-exchange column purified and shipped in a 2D barcoded Matrix tube containing 10ug of transfection-ready, dried plasmid DNA (reconstitute with 100 ul of water).
Reconstitution Method:	<ol style="list-style-type: none">1. Centrifuge at 5,000xg for 5min.2. Carefully open the tube and add 100ul of sterile water to dissolve the DNA.3. Close the tube and incubate for 10 minutes at room temperature.4. Briefly vortex the tube and then do a quick spin (less than 5000xg) to concentrate the liquid at the bottom.5. Store the suspended plasmid at -20°C. The DNA is stable for at least one year from date of shipping when stored at -20°C.
RefSeq:	NM_001649.4
RefSeq Size:	7445 bp
RefSeq ORF:	4851 bp
Locus ID:	357
UniProt ID:	Q13796
Cytogenetics:	Xp22.2
Protein Families:	Druggable Genome
MW:	176.2 kDa
Gene Summary:	This gene represents the human homolog of <i>Xenopus laevis</i> apical protein (APX) gene, which is implicated in amiloride-sensitive sodium channel activity. It is expressed in endothelial cells and facilitates the formation of a contractile network within endothelial cells. Depletion of this gene results in an increase in endothelial sprouting, migration, and angiogenesis. This gene is highly expressed in the retina, and is a strong candidate for ocular albinism type 1 syndrome. Alternatively spliced transcript variants have been found for this gene. [provided by RefSeq, Mar 2016]

Product images:



Circular map for RC222295



Western blot validation of overexpression lysate (Cat# [LY419824]) using anti-DDK antibody (Cat# [TA50011-100]). Left: Cell lysates from untransfected HEK293T cells; Right: Cell lysates from HEK293T cells transfected with RC222295 using transfection reagent MegaTran 2.0 (Cat# [TT210002]).