

Product datasheet for RC222287

MTMR3 (NM_021090) Human Tagged ORF Clone

Product data:

Product Type:	Expression Plasmids
Product Name:	MTMR3 (NM_021090) Human Tagged ORF Clone
Tag:	Myc-DDK
Symbol:	MTMR3
Synonyms:	FYVE-DSP1; ZFYVE10
Mammalian Cell Selection:	Neomycin
Vector:	pCMV6-Entry (PS100001)
E. coli Selection:	Kanamycin (25 ug/mL)
ORF Nucleotide Sequence:	>RC222287 representing NM_021090 Red=Cloning site Blue=ORF Green=Tags(s)

TTTTGTAATACGACTCACTATAGGGCGGCCGGAATTCGTCGACTGGATCCGGTACCGAGGAGATCTGCC
GCC**CGATCGCC**

ATGGATGAAGAGACTCGGCACAGCCTTGAGTGCATCCAGGCCAATCAGATCTTTCCAGGAAGCAGCTGA
TCCGGGAGGATGAGAATCTTCAGGTTCTTTCTTGAACCTTCATGGAGAGACACAGAGTTTGTGGGCCG
TGCCGAGGATGCCATCATTGCCCTTTCCAATTACAGACTTCACATCAAGTTCAAGGAGTCTCTTGTAAAT
GTTCCATTACAGCTTATAGAAAGTGTGAATGCCGAGATATATTTAGCTTCATTTGACTTGCAAAGACT
GCAAAGTTATCAGGTGTCAGTTTTCAACCTTTGAGCAGTGTCAAGAGTGGCTGAAGAGACTGAACAACGC
AATCCGACCACCTGCTAAAATAGAAGATCTCTTCTCATTTCATACCATGCTTGGTGCATGGAGGTCTAT
GCCAGTGAAAAAGAGCAACATGGAGACCTGTGCAGACCAGGGGAGCATGTAACCTCAAGGTTAAAAACG
AGGTGGAGAGGATGGGTTTTGATATGAACAACGCCTGGAGGATTTCCAACATCAATGAGAAGTACAATT
ATGTGGTAGTATCCTCAAGAGCTCATAGTGCCTGCCGTCATCTACAGGCACCAGAGCAATGGAGCTGTCATTGCC
GCTGTGGACAGCCAGAGGTTAGCTGGTGGGGCTGGCGAAATGCAGATGATGAGCATCTGGTACAGTCAGT
AGCCAAAGCTTGTGCCTCTGACTCCCGATCGAGTGGCAGCAAGCTGTCAACTAGGAACACTTCTCGAGAC
TTTCCCAATGGGGGAGACCTTTCTGACGTGGAGTTCGATTCTTCTGTCAAATGCTTCAGGAGCAGAGA
GTTTAGCCATCCAACCGCAGAAGCTTTTGATCTTGGATGCACGCTCCTATGCAGCTGCTGTGGCAAACCG
AGCCAAAGGAGGAGGCTGCGAATGCCAGAGTATTACCCAAACTGTGAAGTTGTGTTTATGGGGATGGCA
AACATTATTCTATTCGAGGAGTTTTAGTCTCTGCGGTTGCTGTGCACTCAGATGCCAGATCCGGGAA
ATTGGCTATCAGCTCTTGAAGCACAAAATGGCTCCATCACTTGCTGTGCTTCTGAAATCAGCGCTTCT
GGTAGTGCATGCTGTGGATCAGGATCAGCGCCGGTGCTAGTACACTGCTCAGATGGCTGGGACCGCACC
CCCCAGATTGTGGCATTGGCTAAGCTCTTGTGGACCCTTATTACCGAACCATAGAGGGTTTCCAGGTCC
TCGTGAAATGGAGTGGCTGGATTTTGGCCATAAATTTGCTGACCGGTGTGGTTCATGGGAGAAGCTCGGA
TGATCTGAATGAACGTTGCCAGTGTCTGCAGTGGCTTACTGTGTTTCATCAGCTTCAGAGGCAATTT



[View online »](#)

CCTTGCTCTTTGAGTTCAATGAAGCATTCCCTGTGAAACTGGTGCAGCATACCTATTCCTGCCTGTTTG
GAACATTCCCTGTGCAACAACGCCAAGGAGAGAGGGGAAAAGCATACTCAGGAACGGACATGTTCCGTGTG
GTCACTTCTTCGGGCAGGCAACAAGGCTTTCAAAAACCTACTGTATTCTCTCAGTCAGAAGCCGTGCTG
TACCCTGTGTGCCATGTGCGTAACCTGATGCTGTGGAGTGCAGTGTACCTGCCCTGCCATCCCCAACCA
CCCCTGTGGACGACAGCTGTGCACCATACCCAGCCCCAGGCCAGCCCTGATGATCCCCCCTGAGCCG
GCTACCAAAGACTAGATCATACGACAATCTGACCACAGCCTGTGACAACACAGTGCCTCTGGCCAGCCGG
CGCTGCAGCGACCCAGCCTGAACGAGAAGTGGCAGGAGCACCGCGCTCACTAGAGCTGAGCAGCCTGG
CTGGCCCTGGAGAGGATCCCCTTTCTGCCGACAGCCTAGGGAAGCCCACCAGAGTGCCGGGGGTGCCGA
GCTTTCTGTTGCAGCCGAGTAGCTGAGGGCAGATGGAGAACATCTTGCAGGAGGCCACCAAAGAGGAG
AGTGGAGTAGAGGAACCTGCCACAGGGCAGGCATTGAGATACAGGAGGGTAAAGAGGACCTCTCTTAG
AAAAGGAGAGCAGGAGGAAGACACCTGAGGCCTCAGCCATTGGACTTCACCAAGACCCAGAAGTGGTGA
TGCTGCTCTGAGGAGCCATCTGGATATGAGCTGGCCTCTGTTCTCACAGGGCATTCTGAACAGCAGAGT
GGGCTCAGTGTCTCCTCAGTTCTCTCCAGGTCCCCCAGGGGAGAGGATTCCCTGGAGGTCCCTGTGG
AGCAGTTTCGAATAGAAGAGATTGCAGAGGGTAGGGAGGAAGCAGTTCTCCAATCCCAGTAGATGCAAA
AGTTGGCTATGGTACCTCACAGTCATGTTCTCTGTACCTTCCAAGTCCCTTTGAGACCAGAGGACCA
AACGTGGACAGTTCTACAGACATGTTAGTGAAGATAAGGTGAAGTCAGTAAGTGGGCCCAAGGTCATC
ATAGATCTTGCCTTGTAATAGTGGCAAGGACAGGCTTCCCTCAGACCATGGAACCCAGCCCTTCAGAGAC
AAGCCTGGTCGAGAGGCCCAAGTGGGGTCTGTGGTGCATAGGACTTCCCTTGGCAGCACTCTCAGCCTG
ACACGTTCCCCTGTGCCTTGCCCTTAGCCGAATGTAAGAGGGGCTTGTGTGCAATGGTGCCCCAGAGA
CTGAAAACAGGGCCTCAGAGCAGCCCCAGGTCTTAGCACCTCCAGATGTACCCACACCCAATGGGCA
TTGCGCCAATGGGGAGGCTGGTAGGAGCAAGGACTCACTGAGCCGTCAGCTGTCTGCTATGAGCTGCAGC
TCTGCCACTTACACTCAAGGAACCTGCACCACAAGTGGCTGCATAGCCACTCAGGAAGGCCATCTGCAA
CCAGCAGCCCCGACCAGCCTTCCCGCAGCCACCTGGACGATGATGGCATGTCAGTGTACACAGACAGGAT
CCAACAGCGCCTGCGTCAGATTGAGTCAGGCCACCAGCAGGAAGTAGAACTTTGAAGAAACAAGTCCAG
GAGCTGAAGAGTCGCTGGAGAGCCAGTACCTGACCAGCTCCCTACACTTAATGGAGACTTTGGGGATG
AGGTGACTTCAATCCCCGACTCGAAAAGCAATCTGGATCAGAAGTGTGTTCTCGCTGCAGCACAGAGAT
TTTCTCTGAAGCCAGCTGGGAGCAGGTGGATAAACAGGACACAGAGATGACCCGTTGGCTTCCCTGACCAC
CTGGCCGCCCACTGCTATGCGTGCAGAGTGCCTTCTGGCTTGCCAGCAGGAAGCACCCTGCAGGAATT
GTGGGAACGATTCTGCTCCAGTTGTTGTAACCAGAAGGTTCCAGTTCACAGCCAGCAGCTCTTTGAACC
CAGTCAGATGCAAGTCTTGTATAGCAGCCTACATCCACAAGCTCCAGCATTGACCTTGAAGTGGAT
AAGCCCATTGCTGCCACTTCCAAC

ACGCGTACGCGGCCGCTCGAGCAGAACTCATCTCAGAAGAGGATCTGGCAGCAAATGATATCCTGGATT
ACAAGGATGACGACGATAAGGTTTAA

Protein Sequence: >RC222287 representing NM_021090
 Red=Cloning site Green=Tags(s)

MDEETRHSLECIQANQIFPRKQLIREDENLQVPFLELHGESTFVGRAEDAIIALSNRYLHIKFKESLVN
 VPLQLIESVECRDIFQLHLTKDCKVIRCQFSTFEQCQEWLKRLNNAIRPPAKIEDLFSFAYHAWCMEVY
 ASEKEQHGDLCRPGEHVTSRFKNEVERMGFDMNNAWRISNINEKYKLCGSPYQELIVPAWITDKELESVS
 SFRSWKRIPAVIYRHQSNGAVIARCGQPEVSWWGWNRADDEHLVQSVAKACASDSRSGSKLSTRNTRSD
 FPNGGDLSDVEFDSSLSNAGAESLAIQPKLLILDARSYAAAVANRAKGGGCEPEYYPNCEVFMGMA
 NIHSIRRSFQSLRLLCTQMPDPGNWLSALESTKWLHHLVLLKSALLVVHAVDQDQRPVLVHCSDGWDR
 PQIVALAKLLDPYYRTIEGFQVLVEMEWLDFGHKFAADRCGHGENSDDLNERCPVFLQWLDVHQLQRQF
 PCSFEFNEAFLVKLVQHTYSCLFGTFLCNAKERGEKHTQERTCSVWSSLRAGNAFKNLLYSSQSEAVL
 YPVCHVRNMLWSAVYLPSPPTPVDDSCAPYPAGTSPDDPPLSRLPKTRSYDNLTTACDNTVPLASR
 RCDPSLNEKWQEHRSLELSSLAGPGEDPLSADSLGKPTRVPGGAELSAAGVAEGQMENILQEATKEE
 SGVEEPAHRAGIEIQEGKEDPLLEKESRRKTPEASAIGLHQDPELGAALRSHLDMSWPLFSQGISEQQS
 GLSVLLSSLQVPPRGEDSLEVPVEQFRIEIEIAEGREEAVLPIVDAKVG YGTSQSCSLLPSQVPFETRGP
 NVDSSTDMLVEDKVKSVSGPQGHRSCLVNSGKDRLPQTMEPSPSETSLVERPQVGSVVHRTSLGSTLSL
 TRSPCALPLAECKEGLVCNGAPETENRASEQPPGLSTLQMYPTPNHGCHANGEAGRSKDSLRSQLSAMSCS
 SAHLHSRNLHHKWLHSHSGRPSATSSPDQPSRSHLDDGMSVYTDTIQQLRQIESGHQEQEVETLKKQVQ
 ELKSRLESQYL TSSLHFNGDFGDEVTSIPDSESNLDQNCLSRCSTEIFSEASWEQVDKQDTEMTRWLPDH
 LAAHCYACDSAFWLASRKHHCRCNGVFCSSCCNQKVPVPSQQLFEPSPVCKSCYSSLHPTSSSIDLELD
 KPIAATSN

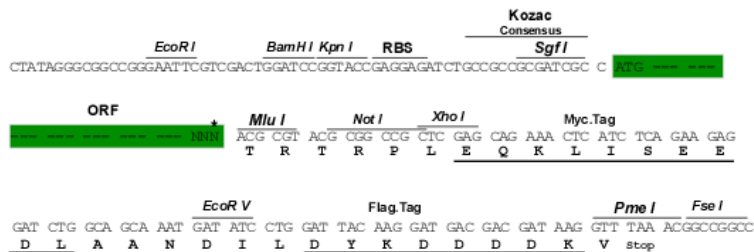
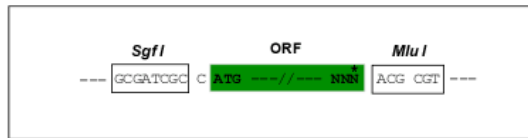
TRTRPLEQKLISEEDLAANDILDYKDDDDKV

Restriction Sites:

Sgfl-MluI

Cloning Scheme:

Cloning sites used for ORF Shuttling:



* The last codon before the Stop codon of the ORF

ACCN: NM_021090

ORF Size: 3594 bp

OTI Disclaimer: Due to the inherent nature of this plasmid, standard methods to replicate additional amounts of DNA in E. coli are highly likely to result in mutations and/or rearrangements. Therefore, OriGene does not guarantee the capability to replicate this plasmid DNA. Additional amounts of DNA can be purchased from OriGene with batch-specific, full-sequence verification at a reduced cost. Please contact our customer care team at custsupport@origene.com or by calling 301.340.3188 option 3 for pricing and delivery.

The molecular sequence of this clone aligns with the gene accession number as a point of reference only. However, individual transcript sequences of the same gene can differ through naturally occurring variations (e.g. polymorphisms), each with its own valid existence. This clone is substantially in agreement with the reference, but a complete review of all prevailing variants is recommended prior to use. [More info](#)

OTI Annotation: This clone was engineered to express the complete ORF with an expression tag. Expression varies depending on the nature of the gene.

Components: The ORF clone is ion-exchange column purified and shipped in a 2D barcoded Matrix tube containing 10ug of transfection-ready, dried plasmid DNA (reconstitute with 100 ul of water).

Reconstitution Method:

1. Centrifuge at 5,000xg for 5min.
2. Carefully open the tube and add 100ul of sterile water to dissolve the DNA.
3. Close the tube and incubate for 10 minutes at room temperature.
4. Briefly vortex the tube and then do a quick spin (less than 5000xg) to concentrate the liquid at the bottom.
5. Store the suspended plasmid at -20°C. The DNA is stable for at least one year from date of shipping when stored at -20°C.

RefSeq: [NM_021090.4](#)

RefSeq Size: 5963 bp

RefSeq ORF: 3597 bp

Locus ID: 8897

UniProt ID: [Q13615](#)

Cytogenetics: 22q12.2

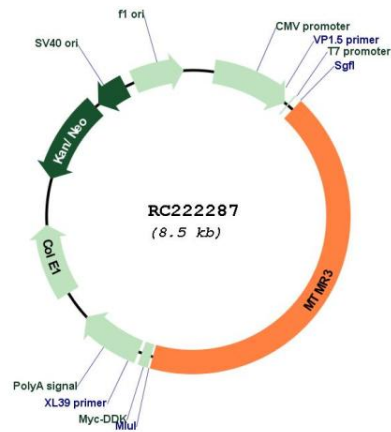
Domains: FYVE, PTPc_motif

Protein Families: Druggable Genome, Phosphatase

MW: 133.4 kDa

Gene Summary:

This gene encodes a member of the myotubularin dual specificity protein phosphatase gene family. The encoded protein is structurally similar to myotubularin but in addition contains a FYVE domain and an N-terminal PH-GRAM domain. The protein can self-associate and also form heteromers with another myotubularin related protein. The protein binds to phosphoinositide lipids through the PH-GRAM domain, and can hydrolyze phosphatidylinositol(3)-phosphate and phosphatidylinositol(3,5)-biphosphate in vitro. The encoded protein has been observed to have a perinuclear, possibly membrane-bound, distribution in cells, but it has also been found free in the cytoplasm. Multiple transcript variants encoding different isoforms have been found for this gene. [provided by RefSeq, Jul 2008]

Product images:

Circular map for RC222287