

Product datasheet for **RC222286**

NOL4 (NM_003787) Human Tagged ORF Clone

Product data:

Product Type:	Expression Plasmids
Product Name:	NOL4 (NM_003787) Human Tagged ORF Clone
Tag:	Myc-DDK
Symbol:	NOL4
Synonyms:	CT125; HRIHFB2255; NOLP
Mammalian Cell Selection:	Neomycin
Vector:	pCMV6-Entry (PS100001)
E. coli Selection:	Kanamycin (25 ug/mL)



[View online »](#)

ORF Nucleotide
Sequence:

>RC222286 representing NM_003787
Red=Cloning site Blue=ORF Green=Tags(s)

TTTTGTAATACGACTCACTATAGGGCGGCCGGAATTCGTCGACTGGATCCGGTACCGAGGAGATCTGCC
GCC**CGGATCGCC**

ATGGAGAGCGAGCGCAGCATGTACGCCAGTTCAGGACTGGTGCCTCAGGACTTACGGGACTCAGGCA
AGACCAAGACGGTGACCCGTAAAAAATACGAACGGATCGTCCAGCTCCTCAATGGCTCCGAGTCGAGCTC
CACGGACAACGCCAAATTTAAATTCTGGGTCAAATCGAAGGGCTTCCAGCTGGGCCAGCCGGACGAGGT
CGCGGGGGAGGCGCGCGCCAAGCAAGTCTCTACGTGCCTGTCAAGACCACGGATGGCGTAGGGGTAG
ATGAGAAGCTATCTTTACGACGGGTAGCTGTGGTTGAAGATTTCTTTGACATTATTTATTCGATGCATGT
GGAAACGGGGCCAAATGGAGAACAATTCGAAACACGCTGGACAAAAGAGAACTTACAAAGCAATTTCA
GAGAGCTATGCCTTCTACCAAGAGAAGCGGTGACACGATTTCTAATGAGCTGCTCAGAGTGCCAGAAAA
GAATGCATTTAAACCCAGATGGAACAGATCATAAAGATAATGGAAAACCTCCACTTTGGTGACCAGCAT
GATTGACTACAACATGCCAATTACCATGGCCTACATGAAACACATGAAGCTGCAGCTGCTAAACTCACAG
CAAGATGAGGATGAAAGTTCAATAGAAAGTGATGAATTTGACATGAGTGATTCAACACGGATGTCAGCTG
TGAACTCTGATCTTAGCTCCAATCTTGAAGAAAGAAATGCAAAGTCCCCAGAATCTTCATGGCCAGCAAGA
TGATGATTCTGCTGCAGAGAGCTTAAATGGCAATGAGACTCTGGGGCACAGTTCAATTGCTTCAGGGGA
ACACACAGCAGGGAGATGGGAGACTCCAACAGTGATGGCAAAACTGGGCTGGAGCAAGATGAACAGCCAC
TGAACCTGAGTGACAGTCCCCTCTGCGCAGCTAACTTCGGAATACAGAATAGATGATCACAACAGTAA
TGGGAAAAACAAGTATAAGAATCTTCTAATTTCTGACCTCAAGATGGAACGAGAGGCGAGAGAAAAATGGA
AGCAAGTCTCCTGCACATAGTTACTCCAGCTATGACTCTGGCAAAAATGAGAGTGTAGACCGAGGAGCTG
AGGACCTCTCACTAAACAGGGGAGATGAGGACGAAGATGACCACGAGGACCATGACGATTCGGAGAAAGT
TAATGAGACAGACGGCGTTGAAGCCGAGCGGCTGAAAGCTTTTAAATATGTTTGTGTCAGGCTGTTTGTAGAT
GAAAACCTTGACCGAATGGTCCCAATCTCTAAGCAGCCAAAGAAAAGATCCAGGCTATCATTGACTCAT
GCAGGCGACAATCCCTGAGTATCAAGAGCGTGCCAGAAAACGTATACGTACTTACCTCAAGTCTGCAG
GCGGATGAAAAGAAGTGGTTTTGAGATGTCTCGACCTATTCCTTCCCACCTTACTTCAGCAGTTGCAGAG
AGTATCTTGGCTTCAGCTTGTGAGAGTGAGAGTAGAAATGCCGCAAGAGGATGCGTCTGGAGAGACAGC
AGGATGAGTCTGCTCCAGCTGACAAACAGTGTAAACCAGAGGCGACCCAGGCCACTTACTCAACATCAGC
TGTTCCAGGCTCACAGGACGTGCTGTACATCAATGGAAATGGGACCTATAGTTACCATAGTTACAGAGGG
CTAGGAGGGGCTGCTAAATCTGAATGATGCTTCCAGCAGTGGACCCACTGATCTCAGCATGAAGAGAC
AATTGGCGACTAGCTCAGGATCCTCCAGCAGCTCAAACCTCCAGACCCAGCTGAGTCCAACCTGAAATCAA
TGCCGTGAGACAGCTTGTGAGGATATCGAGAATCAGCTGCATTTTTATTGCGATCTGCAGATGAAGT
GAAAATCTCATTTTACAACAGAAC

ACGCGTACGCGGCCGCTCGAGCAGAAACTCATCTCAGAAGAGGATCTGGCAGCAAATGATATCCTGGATT
ACAAGGATGACGACGATAAGGTTTAA

Protein Sequence: >RC222286 representing NM_003787
Red=Cloning site Green=Tags(s)

MESERDMYRQFQDWCLRTYGD SGKTKTVTRKKYERIVQLLNGSESSSTDNAKFKFWVKS KGFQLGQPDEV
 RGGGGGAKQVLYVPVKT TDG VGVDEKLSLRRAVAVVDFDIIYSMHVETGPNGEQIRKHAGQKRTYKAIS
 ESYAFLPREAVTRFLMSCSECQKRMHLNPDGTDHKDNGKPPTLVTSMIDYNMPTIMAYMKHMKLQLLNSQ
 QDEDESSIESDEFMDSSTRMSAVNSDLSNLEERMQSPQNLHGQQDDDSAAESFNGNETLGHSSIASGG
 THSREMGSNSDGKTGLEQDEQPLNLSDSPLSAQLTSEYRIDDHNSNGKNKYKNLLISDLKMEREARENG
 SKSPAHSYSSYDSGKNE SVDRGAEDLSLNRGDEDEDHEDHDDSEKVNEDTGVEAERLKAFNMVFVRLFVD
 ENLDRMVPI SKQPKKIQAIIIDSCRRQFPEYQERARKRIRTYLKSCRRMKRSGFEMSRPIPSHLTSAVAE
 SILASACESSRNAAKRMRLERQQDESAPADKQCKPEATQATYSTSAVPGSQDVL YINGNGTYSYHSYRG
 LGGLLNLNDASSSGPTDLSMKRQLATSSGSSSSNSRPQLSPT EINAVRQLVAGYRESAAFLLSADEL
 ENLILQQN

TRTRPLEQKLISEEDLAANDILDYKDDDDKV

Restriction Sites:

SgfI-MluI

Cloning Scheme:



ACCN: NM_003787

ORF Size: 1914 bp

OTI Disclaimer: The molecular sequence of this clone aligns with the gene accession number as a point of reference only. However, individual transcript sequences of the same gene can differ through naturally occurring variations (e.g. polymorphisms), each with its own valid existence. This clone is substantially in agreement with the reference, but a complete review of all prevailing variants is recommended prior to use. [More info](#)

OTI Annotation: This clone was engineered to express the complete ORF with an expression tag. Expression varies depending on the nature of the gene.

Components: The ORF clone is ion-exchange column purified and shipped in a 2D barcoded Matrix tube containing 10ug of transfection-ready, dried plasmid DNA (reconstitute with 100 ul of water).

- Reconstitution Method:**
1. Centrifuge at 5,000xg for 5min.
 2. Carefully open the tube and add 100ul of sterile water to dissolve the DNA.
 3. Close the tube and incubate for 10 minutes at room temperature.
 4. Briefly vortex the tube and then do a quick spin (less than 5000xg) to concentrate the liquid at the bottom.
 5. Store the suspended plasmid at -20°C. The DNA is stable for at least one year from date of shipping when stored at -20°C.

RefSeq: [NM_003787.5](#)

RefSeq Size: 3899 bp

RefSeq ORF: 1917 bp

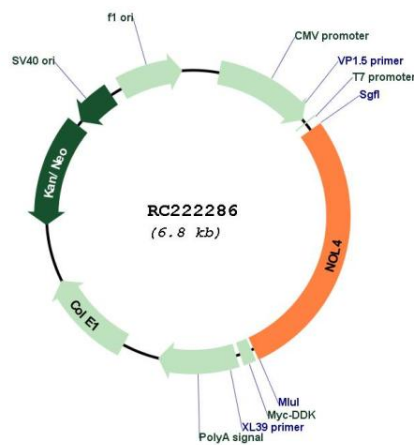
Locus ID: 8715

UniProt ID: [O94818](#)

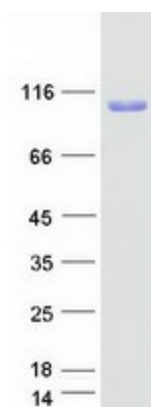
Cytogenetics: 18q12.1

MW: 71.2 kDa

Product images:



Circular map for RC222286



Coomassie blue staining of purified NOL4 protein (Cat# [TP322286]). The protein was produced from HEK293T cells transfected with NOL4 cDNA clone (Cat# RC222286) using MegaTran 2.0 (Cat# [TT210002]).