

Product datasheet for **RC222285**

TCN1 (NM_001062) Human Tagged ORF Clone

Product data:

Product Type:	Expression Plasmids
Product Name:	TCN1 (NM_001062) Human Tagged ORF Clone
Tag:	Myc-DDK
Symbol:	TCN1
Synonyms:	HC; TC-1; TC1; TCI
Mammalian Cell Selection:	Neomycin
Vector:	pCMV6-Entry (PS100001)
E. coli Selection:	Kanamycin (25 ug/mL)



[View online »](#)

ORF Nucleotide
Sequence:

>RC222285 representing NM_001062
Red=Cloning site Blue=ORF Green=Tags(s)

TTTTGTAATACGACTCACTATAGGGCGGCCGGAATTCGTCGACTGGATCCGGTACCGAGGAGATCTGCC
GCC**CGGATCGCC**

ATGAGACAGTCACACCAGCTGCCCTAGTGGGGCTTACTGTTTTCTTTTATTCCAAGCCAACATATGCG
AGATTTGTGAGGTAAGTGAAGAAAACACTACATCCGCCTAAAACCTCTGTTGAATACAATGATCCAGTCAAA
CTATAACAGGGGAACCAGCGCTGTCAATGTTGTGTGTCCTCAAACCTGTTGGAATCCAGATCCAAACC
CTGATGCAAAAGATGATCCAACAAATCAAATACAATGTGAAAAGCAGATTGTCAGATGTAAGCTCGGGAG
AGCTTGCCTTGATTATACTGGCTTTGGGAGTATGTCGTAACGCTGAGGAAAACCTAATATATGATTACCA
CCTGATCGACAAGCTAGAAAATAAATCCAAGCAGAAATGAAAATATGGAAGCACACAATGGCACTCCC
CTGACTAACTACTACCAGCTCAGCCTGGACGTTTTGGCCTGTGTCTGTTCAATGGGAACACTCAACCG
CCGAAGTTGTCAACCACTTCACTCCTGAAAATAAAAACCTATTATTTTGGTAGCCAGTTCTCAGTAGATAC
TGGTGCAATGGCTGTCTGGCTCTGACCTGTGTGAAGAAGAGTCTAATAAATGGGCAGATCAAAGCAGAT
GAAGGCAGTTTAAAGAACATCAGTATTTATACAAAGTCACTGGTAGAAAAGATTCTGTCTGAGAAAAAAG
AAAATGGTCTCATTGAAACACATTTAGCACAGGAGAAGCCATGCAGGCCCTCTTTGTATCATCAGACTA
TTATAATGAAAATGACTGGAATTGCCAACAACTCTGAATACAGTGCTCACGGAAATTTCTCAAGGAGCA
TTCAGTAATCAAACGCTGCAGCCCAGGCTTACCTGCCCTGATGGGAAAGACCTTCTGGATATTAACA
AAGACTCTTCTGCGTCTCTGCTCAGGTAACCTCAACATCTCCGCTGATGAGCCTATAACTGTGACACC
TCCTGACTCACAATCATATATCTCCGTCAATTACTCTGTGAGAATCAATGAAACATATTTACCAATGTC
ACTGTGCTAAATGGTTCTGTCTTCTCAGTGTGATGGAGAAAGCCAGAAAATGAATGATACTATATTTG
GTTTCACAATGGAGGAGCGCTCATGGGGCCCTATACCTGTATTAGGGCCTATGTGCCAACAAATAA
TGACAGAACCTACTGGAACTTCTGAGTGGAGGCGAACCACTGAGCCAAGGAGCTGGTAGTTACGTTGTC
CGCAATGGA

ACGCGTACGCGGCCGCTCGAGCAGAACTCATCTCAGAAGAGGATCTGGCAGCAAATGATATCCTGGATT
ACAAGGATGACGACGATAAGGTTTAA

Protein Sequence:

>RC222285 representing NM_001062
Red=Cloning site Green=Tags(s)

MRQSHQLPLVGLLLFSFIPSQLCEICEVSEENYIRLKP LLNTMIQSNYNRGTSAVNVVLSLKLVGIIQIT
LMQKMIQIKYNVKSRLSDVSSGELAL IILALGVCRNAEENLIYDYHLIDKLENKFQAEIENMEAHNGTP
LTNYYQLSLDLVALCLFNGNYSTAEVNHFTPENKNYYFGSQFSVDTGAMAVLALTCVKKSLINGQIKAD
EGSLKNISIIYTKSLVEKILSEKKENGLIGNTFSTGEAMQALFVSSDYNNENDWNCQQLNTVLTEISQGA
FSNPNAQAQVLPALMGKTFLDINKDSSCVSASGNFNISADEPITVTPPDSQSYISVNYSVRINETYFTNV
TVLNGSVFLSVMKAQKMNDTIFGFTMEERSWGPYITCIQGLCANNDRTYWELLSGGEPLSQGAGSYVV
RNG

TRTRPLEQKLISEEDLAANDILDYKDDDDKV

Chromatograms:

https://cdn.origene.com/chromatograms/mk6114_e04.zip

Restriction Sites:

Sgfl-Mlul

Cloning Scheme:


ACCN: NM_001062

ORF Size: 1269 bp

OTI Disclaimer: The molecular sequence of this clone aligns with the gene accession number as a point of reference only. However, individual transcript sequences of the same gene can differ through naturally occurring variations (e.g. polymorphisms), each with its own valid existence. This clone is substantially in agreement with the reference, but a complete review of all prevailing variants is recommended prior to use. [More info](#)

OTI Annotation: This clone was engineered to express the complete ORF with an expression tag. Expression varies depending on the nature of the gene.

Components: The ORF clone is ion-exchange column purified and shipped in a 2D barcoded Matrix tube containing 10ug of transfection-ready, dried plasmid DNA (reconstitute with 100 ul of water).

Reconstitution Method:

1. Centrifuge at 5,000xg for 5min.
2. Carefully open the tube and add 100ul of sterile water to dissolve the DNA.
3. Close the tube and incubate for 10 minutes at room temperature.
4. Briefly vortex the tube and then do a quick spin (less than 5000xg) to concentrate the liquid at the bottom.
5. Store the suspended plasmid at -20°C. The DNA is stable for at least one year from date of shipping when stored at -20°C.

RefSeq Size: 1576 bp

RefSeq ORF: 1302 bp

Locus ID: 6947

UniProt ID: [P20061](#)

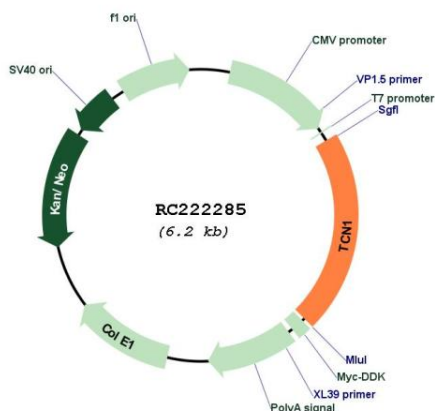
Cytogenetics: 11q12.1

Protein Families: Secreted Protein

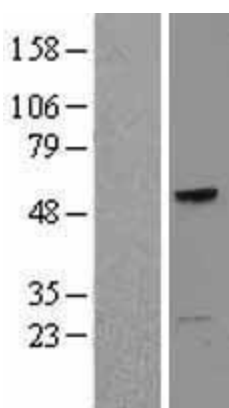
MW: 46.9 kDa

Gene Summary: This gene encodes a member of the vitamin B12-binding protein family. This family of proteins, alternatively referred to as R binders, is expressed in various tissues and secretions. This protein is a major constituent of secondary granules in neutrophils and facilitates the transport of cobalamin into cells. [provided by RefSeq, Jul 2008]

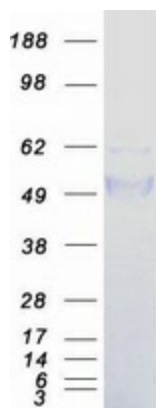
Product images:



Circular map for RC222285



Western blot validation of overexpression lysate (Cat# [LY400432]) using anti-DDK antibody (Cat# [TA50011-100]). Left: Cell lysates from untransfected HEK293T cells; Right: Cell lysates from HEK293T cells transfected with RC222285 using transfection reagent MegaTran 2.0 (Cat# [TT210002]).



Coomassie blue staining of purified TCN1 protein (Cat# [TP322285]). The protein was produced from HEK293T cells transfected with TCN1 cDNA clone (Cat# RC222285) using MegaTran 2.0 (Cat# [TT210002]).