

## Product datasheet for **RC222282**

### **KRT26 (NM\_181539) Human Tagged ORF Clone**

#### **Product data:**

Product Type:	Expression Plasmids
Product Name:	KRT26 (NM_181539) Human Tagged ORF Clone
Tag:	Myc-DDK
Symbol:	KRT26
Synonyms:	CK26; K25B; K25IRS2; K26; KRT25B
Mammalian Cell Selection:	Neomycin
Vector:	pCMV6-Entry (PS100001)
E. coli Selection:	Kanamycin (25 ug/mL)



[View online »](#)

**ORF Nucleotide Sequence:**

>RC222282 ORF sequence  
 Red=Cloning site Blue=ORF Green=Tags(s)

TTTTGTAATACGACTCACTATAGGGCGGCCGGAATTCGTCGACTGGATCCGGTACCGAGGAGATCTGCC  
 GCC**CGGATCGCC**

ATGCTTTTTCGACTTTCTGGTGGATCCAGGAGGATCTGCTCGCGAACTGGGTCTGGTAGGCTGTCCGGTG  
 GAGGAACAGGCTTCGTGGCTGGGAATGTGTGTGGATCGGGAGCAAGAAGCAGCTTTTCTGTACTCT  
 TGAGGGCATCTCTTCTGGAGGAAGCTTCTGCAATAGCGGTGGAGGGTTGGGAAGTGGTGCCTGTGCTGGT  
 TTTCTTGCAATGAGCACAGCCTCCTCTCTGGGAATGAAAAGGTGACCATGCAGAATCTCAACGACCGCC  
 TGGCATCTACCTGGACCATGTGCATGCTCTAGAGGAGGCCAACGCAGACCTGGAGCAGAAGATCAAGGG  
 CTGGTACGAGAAATGTGAGCCTGGCTCTCCCGGGAACACGATCATGACTATAGCAGATACTTCTCAGTC  
 ATAGAAGATCTTAAAAGGCAGATTATTTCTGCGACCATCTGCAATGCCAGCATTGTTCTACAAAATGACA  
 ATGCCAGACTGACCGCTGATGACTTCAGGCTGAAGTATGAAAATGAGCTGGCTCTGCACCACAGTGTGA  
 GGCCGACACCAGTGGTCTTCGCAGAGTGTGGATGAACTGACCCTTTGTACAACCGACCTGGAGATACAG  
 TGTGAGACCCCTCAGTGAGGAATTGACCTACCTCAAAAAAGTCATGAGGAGGAAAATGGAAGTCTTGAAT  
 ATACAGCTGGGGGGAACGTGAACGTGGAGATGAATGCAACCCAGGAGTGGACCTAACTGTCTGTGAA  
 CAACATGAGGGCTGAGTATGAGGACTTGGCTGAGCAGAACCGCAAAGATGCTGAAGCCTGGTTCAACGAG  
 AGGAGTGAACGCTGCAACAACAGATTTCCGATCATGAGGGAGCAGCCACAGCAGCCAGAATGAGCTGA  
 CCGAATTAACGCAATCTGCAACCCCTGGAAATAGAATTGAGTCCCTCATGGCTGTGAAACATTCCTA  
 TGAATGCTCCTTGGCTGAGACTGAAGGAAATTAAGTCAATCAACTCCAGCAAATTCAGGATCAGATAGGG  
 GTGATGGAGGAACAACGATCGAACAGATTCGAACAGAAACAGAAGGCCAGAAGCTGGAGTATGAACAGCTTC  
 TTGATGTAAAAATATTTTTAGAAAAAGAAATGACATTTATTGCAACTTACTAGATGGAGAAAGAAAA  
 AAGCAAATCCACATGTTACAAATCAAAAGGATACAGGCCTGTGAATTCTGGAAATCAAGCCAAAGACTCA  
 ACAGAAGAACTATTGTTAAACAGTGGTTGAGGAACTGGATCAAATTGGCAATCTCTTTCACTGAGAG  
 TCCACTCAGTTGAAGAAAGTCTCTAAAATAAGCAACATTACAGTAGAGCAACGAGTACCTTCTAAAGC  
 ACCA

**ACGCGT**ACGCGGCCGCTCGAGCAGAAACTCATCTCAGAAGAGGATCTGGCAGCAAATGATATCCTGGATT  
 ACAAGGATGACGACGATAAGGTTTAA

**Protein Sequence:**

>RC222282 protein sequence  
 Red=Cloning site Green=Tags(s)

MSFRLSGGSRRICSRITGSGRLSGGGTGFVAGNVCVSGARSSFCTLEGISSGGSFNSGGGLGSGACAG  
 FLGNEHSLLSGNEKVTMQNLNDRLASYL DHVHAL EEEANADLEQKIKGWYEKCEPGSSREHDHDYSRYFSV  
 IEDLKRQIISATICNASIVLQNDNARLTADDFRLKYENELALHHSVEADTSGLRRVLDLDELTLCTDLEIQ  
 CETLSEELTYLKKSH EEEEMEVLQYTAGGNVNVEMNATPGVDLTVLLNNMRAEYEDLAEQNRKDAEAWFNE  
 RSATLQQQISDHEGAATAARNELTELKRNLQTLEIELQSLMAVKHSYECSLAETEGNYCNLQQIQDQIG  
 VMEEQLQQIRTETEGQKLEYEQLLDVKIFLEKEIDIYCNLLDGEERKSKSTCYKSKGYRPNVSGNQAKDS  
 TEETIVKTVVEELDQIGNLLSLRVHSVEEKSSKISNITVEQRVPSKAP

**TR**TRPLEQKLI SEEDLAANDILDYKDDDDKV

**Chromatograms:**

[https://cdn.origene.com/chromatograms/mk6471\\_c03.zip](https://cdn.origene.com/chromatograms/mk6471_c03.zip)

**Restriction Sites:**

Sgfl-Mlul

**Cloning Scheme:**

Cloning sites used for ORF Shutting:


**ACCN:** NM\_181539

**ORF Size:** 1404 bp

**OTI Disclaimer:** The molecular sequence of this clone aligns with the gene accession number as a point of reference only. However, individual transcript sequences of the same gene can differ through naturally occurring variations (e.g. polymorphisms), each with its own valid existence. This clone is substantially in agreement with the reference, but a complete review of all prevailing variants is recommended prior to use. [More info](#)

**OTI Annotation:** This clone was engineered to express the complete ORF with an expression tag. Expression varies depending on the nature of the gene.

**Components:** The ORF clone is ion-exchange column purified and shipped in a 2D barcoded Matrix tube containing 10ug of transfection-ready, dried plasmid DNA (reconstitute with 100 ul of water).

**Reconstitution Method:**

1. Centrifuge at 5,000xg for 5min.
2. Carefully open the tube and add 100ul of sterile water to dissolve the DNA.
3. Close the tube and incubate for 10 minutes at room temperature.
4. Briefly vortex the tube and then do a quick spin (less than 5000xg) to concentrate the liquid at the bottom.
5. Store the suspended plasmid at -20°C. The DNA is stable for at least one year from date of shipping when stored at -20°C.

**RefSeq:** [NM\\_181539.4](#), [NP\\_853517.2](#)
**RefSeq Size:** 1748 bp

**RefSeq ORF:** 1407 bp

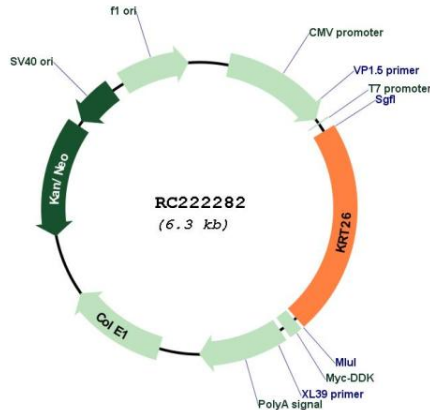
**Locus ID:** 353288

**UniProt ID:** [Q7Z3Y9](#)
**Cytogenetics:** 17q21.2

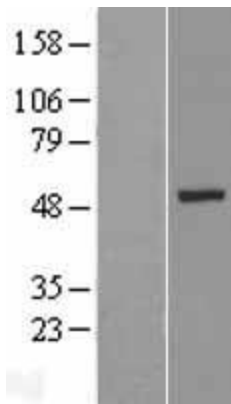
**MW:** 51.9 kDa

**Gene Summary:** The protein encoded by this gene is a member of the keratin superfamily. This keratin protein is a type I keratin that is specific for the inner root sheath of the hair follicle. This gene exists in a cluster with other keratin genes on chromosome 17q21. [provided by RefSeq, Jul 2009]

**Product images:**



Circular map for RC222282



Western blot validation of overexpression lysate (Cat# [LY405700]) using anti-DDK antibody (Cat# [TA50011-100]). Left: Cell lysates from untransfected HEK293T cells; Right: Cell lysates from HEK293T cells transfected with RC222282 using transfection reagent MegaTran 2.0 (Cat# [TT210002]).