

Product datasheet for **RC222275**

IL28 Receptor alpha (IFNLR1) (NM_170743) Human Tagged ORF Clone

Product data:

Product Type:	Expression Plasmids
Product Name:	IL28 Receptor alpha (IFNLR1) (NM_170743) Human Tagged ORF Clone
Tag:	Myc-DDK
Symbol:	IL28 Receptor alpha
Synonyms:	CRF2/12; IFNLR; IL-28R1; IL28RA; LICR2
Mammalian Cell Selection:	Neomycin
Vector:	pCMV6-Entry (PS100001)
E. coli Selection:	Kanamycin (25 ug/mL)



[View online »](#)

ORF Nucleotide Sequence:

>RC222275 representing NM_170743
 Red=Cloning site Blue=ORF Green=Tags(s)

TTTTGTAATACGACTCACTATAGGGCGGCCGGAATTCGTCGACTGGATCCGGTACCGAGGAGATCTGCC
 GCC**CGGATCGCC**

ATGGCGGGGCCGAGCGCTGGGGCCCCCTGCTCCTGTGCCTGCTGCAGGCCGCTCCAGGGAGCCCCGTC
 TGGCCCCCTCCCAGAATGTGACGCTGCTCTCCAGAATTTCAGCGTGTACCTGACATGGCTCCAGGGCT
 TGGCAACCCCCAGGATGTGACCTATTTTGTGGCCTATCAGAGCTCTCCACCCGTAGACGGTGGCGCGAA
 GTGGAAGAGTGTGCGGGAACCAAGGAGCTGCTATGTTCTATGATGTGCCTGAAGAAAACAGGACCTGTACA
 ACAAGTTCAAGGGACGCGTGGGACGGTTTCTCCAGCTCCAAGTCCCCCTGGGTGGAGTCCGAATACCT
 GGATTACCTTTTTGAAGTGGAGCCGGCCCCACCTGTCTGGTGTCAACCAGACGGAGGAGATCTGAGT
 GCCAATGCCACGTACCAGCTGCCCCCTGCATGCCCCACTGGATCTGAAGTATGAGGTGGCATTCTGGA
 AGGAGGGGGCCGAAACAAGACCCTATTTCCAGTCACTCCCATGGCCAGCCAGTCCAGATCACTCTCCA
 GCCAGCTGCCAGGAACACCCTGCCTCAGTGCAGAACCATCTACACGTTCAAGTGTCCCGAAATACAGC
 AAGTTCTCTAAGCCACCTGCTTCTTGCTGGAGGTCCCAGAAGCCAAGTGGGCTTTCCTGGTGTGCCAT
 CGTTCTGATACTGCTGTTAGTAATTGCCGCAGGGGTGTGATCTGGAAGACCCTCATGGGGAACCCCTG
 GTTTCAGCGGGCAAAGATGCCACGGGCCCTGGACTTTTCTGGACACACACCCTGTGGCAACCTTTTCAG
 CCCAGCAGACCAGAGTCCGTGAATGACTTGTCTCTGTCCCCAAAAGGAACTGACCAGAGGGGTGAGGC
 CGACGCCCTCGAGTCAGGGCCCCAGCCACCAACAGACAAGATGGAAGAAGGACCTTGACAGGACGAAGA
 GGAGGAGGATGAGGAGGACAGAAAGATGGCGTCAGCTTCCAGCCCTACATTGAACCACCTTCTTTCCTG
 GGGCAAGAGCACCAAGGCTCCAGGGCACTCGGAGGCTGGTGGGTGGACTCAGGGAGGCCAGGGCTCCTC
 TGGTCCCAAGCGAAGGCTCCTCTGCTTGGGATTTTCAGACAGAAGCTGGGCCAGCATGTGGACTCCTC
 CTGGGACAGGGCTGGGTCTCTGGCTATTGGCTGAGAAGGGGCCAGGCCAAGGGCCGGGTGGGGATGGG
 CACCAAGAATCTCTCCACCACCTGAATTCTCCAAGGACTCGGGTTTCTGGAAGAGCTCCAGAAGATA
 ACCTCTCTCTGGGCCACCTGGGGCACCTTACCACGGAGCCGAATCTGGTCCCTGGGGGACCCCCAGT
 TTCTCTCAGACTGACCTTCTGCTGGAAAGCAGCCCTGAGGAGGAAGAGGAGGCGAGGGAATCAGAA
 ATTGAGGACAGCGATGCGGGCAGCTGGGGGCTGAGAGCACCCAGAGGACCGAGGACAGGGGCCGGACAT
 TGGGGCATTACATGGCCAGG

AG**CGGACCG**ACGCGTACGCGGCCGCTCGAGCAGAACTCATCTCAGAAGAGGATCTGGCAGCAAATGATATCC
 TGGATTACAAGGATGACGACGATAAGGTTTAA

Protein Sequence:

>RC222275 representing NM_170743
 Red=Cloning site Green=Tags(s)

MAGPERWGPLLLCLLQAAPGRPRLAPPQNVTLISQNFVSVYLTWLPGLGNPQDVTFVAYQSSPTRRRRWRE
 VEECAGTKELLCSMMCLKKQDLYNKFKGRVRTVSPSSKSPWVESEYLDYLFVEVAPPVVLVTQTEEILS
 ANATYQLPPCMPPLDLKYEVAFWKEGAGNKTLFPVTPHGQPVQITLQPAASEHHCLSARTIYTFVSPKY
 KFSKPTCFLLLEVPANWAFVLPSLLILLVIAAGGVIWKTLMGNPWFQRAKMPRALDFSGHHPVATFQ
 PSRPESVNDLFLCPQKELTRGVRPTPRVRPATQQTRWKKDLAEDEEEDEEDTEDGVSFQPIEPPSFL
 GQEHQAPGHSEAGGVDSGRPRAPLVPSEGSSAWDSSDRSWASTVDSSWDRAGSSGYLAKEGPGQPGGDG
 HQESLPPPEFSKDSGFLEELPEDNLSSWATWGTLPPEPNLVPGGPPVSLQTLTFCWESSPEEEEEARESE
 IEDSDAGSWGAESTQRTEDRGRITLGHYMAR

SGPTRRRLEQKLISEEDLAANDILDYKDDDDKV

Chromatograms:

https://cdn.origene.com/chromatograms/mg4181_f10.zip

Restriction Sites:

Sgfl-RsrII

Cloning Scheme:


ACCN: NM_170743

ORF Size: 1560 bp

OTI Disclaimer: The molecular sequence of this clone aligns with the gene accession number as a point of reference only. However, individual transcript sequences of the same gene can differ through naturally occurring variations (e.g. polymorphisms), each with its own valid existence. This clone is substantially in agreement with the reference, but a complete review of all prevailing variants is recommended prior to use. [More info](#)

OTI Annotation: This clone was engineered to express the complete ORF with an expression tag. Expression varies depending on the nature of the gene.

Components: The ORF clone is ion-exchange column purified and shipped in a 2D barcoded Matrix tube containing 10ug of transfection-ready, dried plasmid DNA (reconstitute with 100 ul of water).

Reconstitution Method:

1. Centrifuge at 5,000xg for 5min.
2. Carefully open the tube and add 100ul of sterile water to dissolve the DNA.
3. Close the tube and incubate for 10 minutes at room temperature.
4. Briefly vortex the tube and then do a quick spin (less than 5000xg) to concentrate the liquid at the bottom.
5. Store the suspended plasmid at -20°C. The DNA is stable for at least one year from date of shipping when stored at -20°C.

RefSeq: [NM_170743.4](#)

RefSeq Size: 4549 bp

RefSeq ORF: 1563 bp

Locus ID: 163702

UniProt ID: [Q8IU57](#)

Cytogenetics: 1p36.11

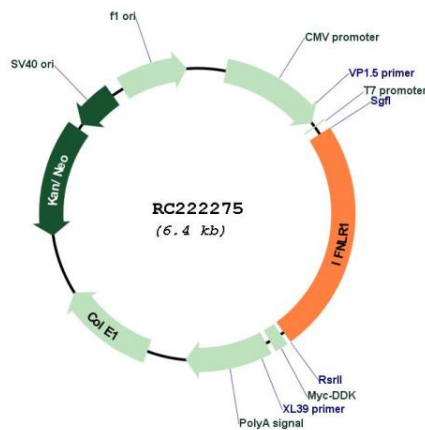
Protein Families: Druggable Genome, Transmembrane

Protein Pathways: Cytokine-cytokine receptor interaction, Jak-STAT signaling pathway

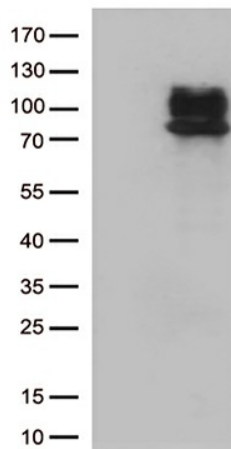
MW: 57.5 kDa

Gene Summary: The protein encoded by this gene belongs to the class II cytokine receptor family. This protein forms a receptor complex with interleukine 10 receptor, beta (IL10RB). The receptor complex has been shown to interact with three closely related cytokines, including interleukin 28A (IL28A), interleukin 28B (IL28B), and interleukin 29 (IL29). The expression of all three cytokines can be induced by viral infection. The cells overexpressing this protein have been found to have enhanced responses to IL28A and IL29, but decreased response to IL28B. Three alternatively spliced transcript variants encoding distinct isoforms have been reported. [provided by RefSeq, Jul 2008]

Product images:



Circular map for RC222275



HEK293T cells were transfected with the pCMV6-ENTRY control (Cat# [PS100001], Left lane) or pCMV6-ENTRY IFNLR1 (Cat# RC222275, Right lane) cDNA for 48 hrs and lysed. Equivalent amounts of cell lysates (5 ug per lane) were separated by SDS-PAGE and immunoblotted with anti-IFNLR1 (Cat# [TA812617])(1:500).