

Product datasheet for **RC222271**

Hemopexin (HPX) (NM_000613) Human Tagged ORF Clone

Product data:

Product Type:	Expression Plasmids
Product Name:	Hemopexin (HPX) (NM_000613) Human Tagged ORF Clone
Tag:	Myc-DDK
Symbol:	Hemopexin
Synonyms:	HX
Mammalian Cell Selection:	Neomycin
Vector:	pCMV6-Entry (PS100001)
E. coli Selection:	Kanamycin (25 ug/mL)



[View online »](#)

ORF Nucleotide Sequence:

>RC222271 representing NM_000613
 Red=Cloning site Blue=ORF Green=Tags(s)

TTTTGTAATACGACTCACTATAGGGCGGCCGGAATTCGTCGACTGGATCCGGTACCGAGGAGATCTGCC
 GCCGCGATCGCC

ATGGCTAGGGTACTGGGAGCACCCGTTGCACTGGGGTTGTGGAGCCTATGCTGGTCTCTGGCCATTGCCA
 CCCCTCTTCTCCGACTAGTGCCATGGGAATGTTGCTGAAGGCGAGACCAAGCCAGACCCAGACGTGAC
 TGAACGCTGCTCAGATGGCTGGAGCTTTGATGCTACCACCCTGGATGACAATGGAACCATGCTGTTTTTT
 AAAGGGGAGTTTGTGGGAAGAGTCAAAATGGGACCGGGAGTTAATCTCAGAGAGATGGAAGAATTTCC
 CCAGCCCTGTGGATGCTGCATTCGTCAAGGTCAACAGTGTCTTTCTGATCAAGGGGGACAAAGTCTG
 GGTATACCCTCCTGAAAAGAAGGAGAAAGGATACCCAAAGTTGCTCCAAGATGAATTTCTGGAATCCCA
 TCCCCACTGGATGCAGCTGTGGAATGTCACCGTGGAGAATGTCAAGCTGAAGGCGTCTCTTCTTCCAAG
 GTGACCGGAGTGGTTCTGGGACTTGGCTACGGGAACCATGAAGGAGCGTTCCTGGCCAGCTGTTGGGAA
 CTGCTCCTCTGCCCTGAGATGGCTGGGCGCTACTACTGTTCCAGGGTAACCAATTCCTGCGCTTCGAC
 CCTGTACAGGGGAGAGGTGCCTCCAGGTACCCGCGGGATGTCGAGACTACTTATGCCCCTGCCCTGGCA
 GAGGCCATGGACACAGGAATGGGACTGGCCATGGGAACAGTACCCACCATGGCCCTGAGTATATGCGCTG
 TAGCCACATCTAGTCTTGTCTGCACTGACGTCTGACAACCATGGTGCCACCTATGCCTTCAGTGGGACC
 CACTACTGGCGTCTGGACACCAGCCGGGATGGCTGGCATAGCTGGCCATTGCTCATCAGTGGCCCCAGG
 GTCCTTACAGCAGTGGATGCTGCCTTTTCTGGGAAGAAAACCTCTATCTGGTCCAGGGCACCCAGGTATA
 TGTCTTCTGACAAAGGGAGGCTATACCCTAGTAAGCGGTTATCCGAAGCGGCTGGAGAAGGAAGTCGGG
 ACCCTCATGGGATTATCCTGGACTCTGTGGATGCGGCCTTTATCTGCCCTGGGTCTTCTCGGCTCCATA
 TCATGGCAGGACGGCGGCTGTGGTGGCTGGACCTGAAGTCAGGAGCCCAAGCCACGTGGACAGAGCTTCC
 TTGGCCCCATGAGAAGGTAGACGGAGCCTTGTGTATGGAAAAGTCCCTTGGCCCTAACTCATGTTCCGCC
 AATGGTCCCGCTTGTACCTCATCCATGGTCCCAATTTGTACTGCTACAGTATGTGGAGAACTGAATG
 CAGCCAAGGCCCTTCGCAACCCAGAATGTGACCAGTCTCTGGGCTGCACTCAC

ACGCGTACGCGGCCGCTCGAGCAGAACTCATCTCAGAAGAGGATCTGGCAGCAAATGATATCCTGGATT
 ACAAGGATGACGACGATAAGGTTTAA

Protein Sequence:

>RC222271 representing NM_000613
 Red=Cloning site Green=Tags(s)

MARVLGAPVALGLWSLCWSLAIATPLPPTSAHGNVAEGETKPDVTERCSDGWSFDATLLDNGTMLFF
 KGEFVWKSHKWDRELISERWKNFSPVDAAFRQGHNSVFLIKGDKVWVYPPEKKEKGYPKLLQDEFPGIP
 SPLDAAVECHRGECAEGVLFFQGDREWFWDLATGTMKERSWPAVGNCSALRWLGRYYCFQGNQFLRFD
 PVRGEVPPRYPRDVRDYFMPGPRGHGHRNGTGHGNSTHHGPEYMRCSPHLVLSALTSDNHGATYAFSGT
 HYWRLDTSRDGWSWPIAHQWPQGPSAVDAAFSWEEKLYLVQGTQYVFLTKGGYTLVSGYPKRLEKEVG
 TPHGIILDSVDAAFICPGSSRLHIMAGRRLWLDLKSQAQATWTELPWPHEKVDGALCMEKSLGPNSCSA
 NGPGLYL IHGPNLYCYS DVEKLNAAKALPQPQNVTSLLGCTH

TRTRPLEQKLISEEDLAANDILDYKDDDDKV

Chromatograms:

https://cdn.origene.com/chromatograms/mk6044_c05.zip

Restriction Sites:

Sgfl-Mlul

Cloning Scheme:


ACCN: NM_000613

ORF Size: 1386 bp

OTI Disclaimer: The molecular sequence of this clone aligns with the gene accession number as a point of reference only. However, individual transcript sequences of the same gene can differ through naturally occurring variations (e.g. polymorphisms), each with its own valid existence. This clone is substantially in agreement with the reference, but a complete review of all prevailing variants is recommended prior to use. [More info](#)

OTI Annotation: This clone was engineered to express the complete ORF with an expression tag. Expression varies depending on the nature of the gene.

Components: The ORF clone is ion-exchange column purified and shipped in a 2D barcoded Matrix tube containing 10ug of transfection-ready, dried plasmid DNA (reconstitute with 100 ul of water).

- Reconstitution Method:**
1. Centrifuge at 5,000xg for 5min.
 2. Carefully open the tube and add 100ul of sterile water to dissolve the DNA.
 3. Close the tube and incubate for 10 minutes at room temperature.
 4. Briefly vortex the tube and then do a quick spin (less than 5000xg) to concentrate the liquid at the bottom.
 5. Store the suspended plasmid at -20°C. The DNA is stable for at least one year from date of shipping when stored at -20°C.

RefSeq: [NM_000613.3](#)

RefSeq Size: 1389 bp

RefSeq ORF: 1389 bp

Locus ID: 3263

UniProt ID: [P02790](#)

Cytogenetics: 11p15.4

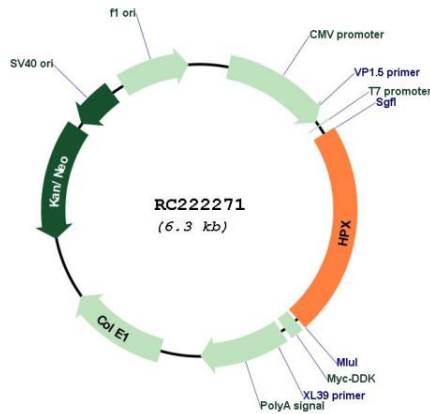
Domains: hemopexin

Protein Families: Secreted Protein

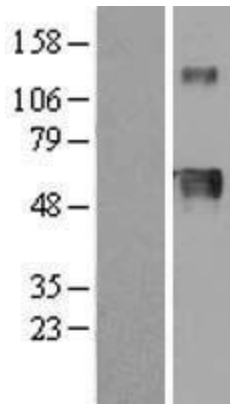
MW: 51.68 kDa

Gene Summary: This gene encodes a plasma glycoprotein that binds heme with high affinity. The encoded protein is an acute phase protein that transports heme from the plasma to the liver and may be involved in protecting cells from oxidative stress. [provided by RefSeq, Apr 2009]

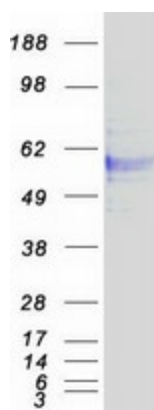
Product images:



Circular map for RC222271



Western blot validation of overexpression lysate (Cat# [LY400205]) using anti-DDK antibody (Cat# [TA50011-100]). Left: Cell lysates from untransfected HEK293T cells; Right: Cell lysates from HEK293T cells transfected with RC222271 using transfection reagent MegaTran 2.0 (Cat# [TT210002]).



Coomassie blue staining of purified HPX protein (Cat# [TP322271]). The protein was produced from HEK293T cells transfected with HPX cDNA clone (Cat# RC222271) using MegaTran 2.0 (Cat# [TT210002]).