

Product datasheet for **RC222263**

Annexin VIII (ANXA8) (NM_001040084) Human Tagged ORF Clone

Product data:

Product Type:	Expression Plasmids
Product Name:	Annexin VIII (ANXA8) (NM_001040084) Human Tagged ORF Clone
Tag:	Myc-DDK
Symbol:	Annexin VIII
Synonyms:	ANX8; CH17-360D5.2
Mammalian Cell Selection:	Neomycin
Vector:	pCMV6-Entry (PS100001)
E. coli Selection:	Kanamycin (25 ug/mL)
ORF Nucleotide Sequence:	>RC222263 ORF sequence Red=Cloning site Blue=ORF Green=Tags(s)

TTTTGTAATACGACTCACTATAGGGCGGCCGGAATTCGTCGACTGGATCCGGTACCGAGGAGATCTGCC
GCC**CGATCGCC**

ATGGCCTGGTGGAAATCCTGGATTGAACAGGAGGGTGTACAGTGAAGAGCAGCTCCCACTTCAACCCAG
ACCCTGATGCAGAGACCCTCTACAAAGCCATGAAGGGATCGGGACCAACGAGCAGGCTATCATCGATGT
GCTCACGAAGAGAAGCAACACGCAGCGGCAGCAGATCGCCAAGTCCTTCAAGGCTCAGTTCGGCAAGGAC
CTCACTGAGACCTTGAAGTCTGAGCTCAGTGGCAAGTTTGAGAGGCTCATTGTGGCCCTTATGTATCCG
CATAACAGATACGAAGCCAAGGAGCTGCATGACGCCATGAAGGGCTTAGGAACCAAGGAGGGTGTGCATCAT
TGAGATCCTGGCCTCTCGGACCAAGAACCAGCTGCGGGAGATAATGAAGGCGTATGAGGAAGACTATGGG
TCCAGCCTGGAGGAGGACATCCAAGCAGACACAAGTGGCTACCTGGAGAGGATCCTGGTGTGCCTCCTGC
AGGGCAGCAGGGATGATGTGAGCAGCTTTGTGGACCCGGCACTGGCCCTCCAAGACGCACAGGATCTGTA
TGCGGCAGGCGAGAAGATTCTGGGACTGATGAGATGAAATTCATCACCATCCTGTGCACGCGCAGTGCC
ACTCACCTGTGAGAGTGTGAAAGATGAGAAAATTGCCAACAGAGCATTGAGGACAGCATCAAGA
GTGAGACCCATGGCTCACTGGAGGAGCCATGCTCACTGTGGTGAATGCACCCAAAACCTCCACAGCTA
CTTTGCAGAGAGACTGTACTATGCCATGAAGGGAGCAGGGACGCGTGTGGGACCTGATAAGAAACATC
GTTTCAAGGAGCGAGATTGACTTAAATCTTATCAAATGTCACCTCAAGAAGATGTACGGCAAGACCCTCA
GCAGCATGATCATGGAAGACACCAGCGGTGACTACAAGAACGCCCTGCTGAGCCTGGTGGCAGCGACCC
C

AG**CGGACCG**ACGCGTACGCGGCCGCTCGAGCAGAACTCATCTCAGAAGAGGATCTGGCAGCAAATGATATCC
TGGATTACAAGGATGACGACGATAAGGTTTAA



[View online »](#)

Protein Sequence: >RC222263 protein sequence
Red=Cloning site Green=Tags(s)

MAWWKSWIEQEGVTVKSSSHFNPDPAETLYKAMKIGITNEQAIIDVLTkRSNTQRQQIAKSFKAQFGKD
 LTETLkSELsGKFERLIVALMYPPYRYEAKELHDAMKGLGtKEGVIEILASRTKNQLREIMKAYEEDYG
 SSLEEDIQADTSgYLERILVCLLQGSRDDVSSfVDPALALQDAQDLyAAGEKIRGTDEMkFITILCTRSA
 THLLRVFEeYEKIANKSIEDSIKSEtHGSLEEAMLtVVKCTQNLHSyFAERLYYAMKGAgtRDGTLIRNI
 VSRSEIDLNLIKChFKMYGkTLSSMIMEDtSGDYKNALLSLVGSdP

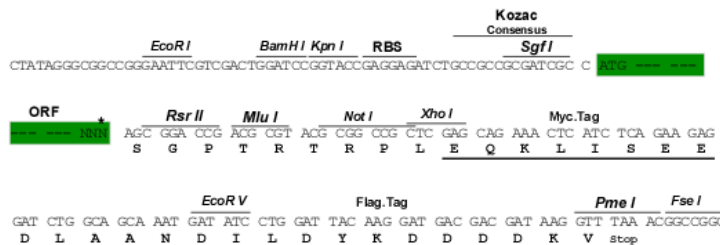
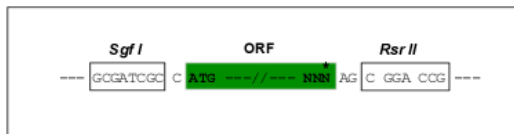
SGPTRTRPLEQKLI SEEDLAANDILDYKDDDDKV

Chromatograms: https://cdn.origene.com/chromatograms/mk6615_a09.zip

Restriction Sites: SgfI-RsrII

Cloning Scheme:

Cloning sites used for ORF Shuttling:



* The last codon before the Stop codon of the ORF

ACCN: NM_001040084

ORF Size: 981 bp

OTI Disclaimer: The molecular sequence of this clone aligns with the gene accession number as a point of reference only. However, individual transcript sequences of the same gene can differ through naturally occurring variations (e.g. polymorphisms), each with its own valid existence. This clone is substantially in agreement with the reference, but a complete review of all prevailing variants is recommended prior to use. [More info](#)

OTI Annotation: This clone was engineered to express the complete ORF with an expression tag. Expression varies depending on the nature of the gene.

Components: The ORF clone is ion-exchange column purified and shipped in a 2D barcoded Matrix tube containing 10ug of transfection-ready, dried plasmid DNA (reconstitute with 100 ul of water).

Reconstitution Method:

1. Centrifuge at 5,000xg for 5min.
2. Carefully open the tube and add 100ul of sterile water to dissolve the DNA.
3. Close the tube and incubate for 10 minutes at room temperature.
4. Briefly vortex the tube and then do a quick spin (less than 5000xg) to concentrate the liquid at the bottom.
5. Store the suspended plasmid at -20°C. The DNA is stable for at least one year from date of shipping when stored at -20°C.

RefSeq: [NM_001040084.3](#)

RefSeq Size: 2070 bp

RefSeq ORF: 984 bp

Locus ID: 653145

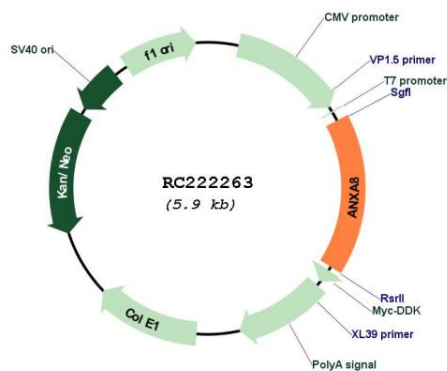
UniProt ID: [P13928](#)

Cytogenetics: 10q11.22

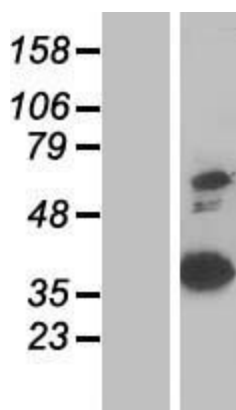
MW: 36.9 kDa

Gene Summary: This gene encodes a member of the annexin family of evolutionarily conserved Ca²⁺ and phospholipid binding proteins. The encoded protein may function as an anticoagulant that indirectly inhibits the thromboplastin-specific complex. Overexpression of this gene has been associated with acute myelocytic leukemia. A highly similar duplicated copy of this gene is found in close proximity on the long arm of chromosome 10. [provided by RefSeq, Jul 2008]

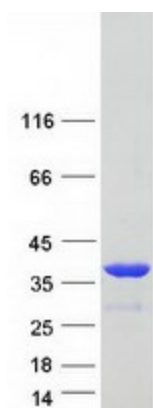
Product images:



Circular map for RC222263



Western blot validation of overexpression lysate (Cat# [LY421668]) using anti-DDK antibody (Cat# [TA50011-100]). Left: Cell lysates from untransfected HEK293T cells; Right: Cell lysates from HEK293T cells transfected with RC222263 using transfection reagent MegaTran 2.0 (Cat# [TT210002]).



Coomassie blue staining of purified ANXA8 protein (Cat# [TP322263]). The protein was produced from HEK293T cells transfected with ANXA8 cDNA clone (Cat# RC222263) using MegaTran 2.0 (Cat# [TT210002]).