

Product datasheet for **RC222248**

CD300 (CD300LF) (NM_139018) Human Tagged ORF Clone

Product data:

Product Type:	Expression Plasmids
Product Name:	CD300 (CD300LF) (NM_139018) Human Tagged ORF Clone
Tag:	Myc-DDK
Symbol:	CD300
Synonyms:	CD300f; CLM-1; CLM1; IgSF13; IREM-1; IREM1; LMIR3; NKIR
Mammalian Cell Selection:	Neomycin
Vector:	pCMV6-Entry (PS100001)
E. coli Selection:	Kanamycin (25 ug/mL)
ORF Nucleotide Sequence:	>RC222248 representing NM_139018 Red=Cloning site Blue=ORF Green=Tags(s)

TTTTGTAATACGACTCACTATAGGGCGGCCGGAATTCGTCGACTGGATCCGGTACCGAGGAGATCTGCC
GCC**CGGATCGCC**

ATGCCCTGCTGACTCTACCTGCTCCTTCTGGCTCTCAGGCTACTCCATTGCCACTCAAATCACCG
GTCCAACAACAGTGAATGGCTTGGAGCGGGCTCCTTGACCGTGCAGTGTGTTTACAGATCAGGCTGGGA
GACCTACTTGAAGTGGTGGTGTGCGAGGAGCTATTTGGCGTACTGCAAGATCCTTGTTAAAACAGTGGG
TCAGAGCAGGAGGTGAAGAGGGACCGGGTGTCCATCAAGGACAATCAGAAAAACCGCACGTTCACTGTGA
CCATGGAGGATCTCATGAAAAGTATGCTGACACTTACTGGTGTGGAATTGAGAAAAGTGGAAATGACCT
TGGGGTACAGTTCAAGTGACCATTGACCCAGCACAGTACCCAAGAAGAACTAGCAGCTCCCCAACT
CTGACCGGCCACCACTTGACAACAGGCACAAGCTCCTGAAGCTCAGTGTCTCTGCCCTCATCTTCA
CCATATTGCTGCTGCTTTTGGTGGCCGCTCACTCTTGGCTTGGAGGATGATGAAGTACCAGCAGAAAGC
AGCCGGGATGTCCCAGAGCAGGTACTGCAGCCCTGGAGGGCGACCTCTGCTATGCAGACCTGACCCTG
CAGCTGGCCGGAACCTCCCCGAAAAGGCTACCACGAAGCTTCTCTGCCAGGTTGACCAGGTGGAAG
TGAATATGTACCATGGCTTCTTGGCGAAGGAGGACATTTCTATGCATCTCTGACCTTGGGTGCTGA
GGATCAGGAACCGACCTACTGCAACATGGCCACCTCAGTAGCCACCTCCCCGGCAGGGGCCCTGAGGAG
CCCACGGAATACAGCACCATCAGCAGGCCT

ACGCGTACGCGGCCGCTCGAGCAGAAACTCATCTCAGAAGAGGATCTGGCAGCAAATGATATCCTGGATT
ACAAGGATGACGACGATAAGGTTTAA



[View online »](#)

Protein Sequence: >RC222248 representing NM_139018
Red=Cloning site Green=Tags(s)

MPLLTLYLLLFWLSGYSIATQITGPTTVNGLERGLSTVQC VYRSGWETYLKWWCRGAIWRDCKILVKTSG
 SEQEVKRDRVSIKDNQKNRTFTVTMEDLMKTDADTYWCGIEKTGNDLGVTVQVTIDPAPVTQEETSSSPT
 LTGHHLNDRHKLLKLSVLLPLIFTILLLLLVAASLLAWRMMKYQQKAAGMSPEQVLQPLEGDLCYADLTL
 QLAGTSPQKATTKLSSAQVDQVEVEYVTMASLPKEDISYASLTLGAEDQEPTYCNMGHLSHLPGRGPPEE
 PTEYSTISR

TRTRPLEQKLISEEDLAANDILDYKDDDDKV

Chromatograms: https://cdn.origene.com/chromatograms/mk6706_d02.zip

Restriction Sites: SgfI-MluI

Cloning Scheme:



ACCN: NM_139018

ORF Size: 870 bp

OTI Disclaimer: The molecular sequence of this clone aligns with the gene accession number as a point of reference only. However, individual transcript sequences of the same gene can differ through naturally occurring variations (e.g. polymorphisms), each with its own valid existence. This clone is substantially in agreement with the reference, but a complete review of all prevailing variants is recommended prior to use. [More info](#)

OTI Annotation: This clone was engineered to express the complete ORF with an expression tag. Expression varies depending on the nature of the gene.

Components: The ORF clone is ion-exchange column purified and shipped in a 2D barcoded Matrix tube containing 10ug of transfection-ready, dried plasmid DNA (reconstitute with 100 ul of water).

Reconstitution Method:

1. Centrifuge at 5,000xg for 5min.
2. Carefully open the tube and add 100ul of sterile water to dissolve the DNA.
3. Close the tube and incubate for 10 minutes at room temperature.
4. Briefly vortex the tube and then do a quick spin (less than 5000xg) to concentrate the liquid at the bottom.
5. Store the suspended plasmid at -20°C. The DNA is stable for at least one year from date of shipping when stored at -20°C.

RefSeq: [NM_139018.5](#)

RefSeq Size: 1794 bp

RefSeq ORF: 873 bp

Locus ID: 146722

UniProt ID: [Q8TDQ1](#)

Cytogenetics: 17q25.1

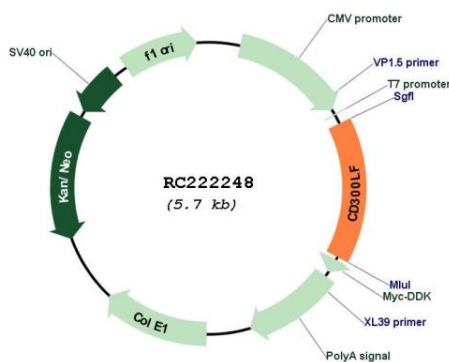
Domains: IG

Protein Families: Druggable Genome, Transmembrane

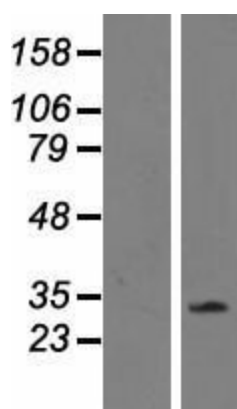
MW: 32.2 kDa

Gene Summary: This gene encodes a member of the CD300 protein family. Members of this family are cell surface glycoproteins with a single IgV-like extracellular domain, and are involved in the regulation of immune response. The encoded protein is an inhibitory receptor. Alternative splicing results in multiple transcript variants. [provided by RefSeq, Jan 2014]

Product images:



Circular map for RC222248



Western blot validation of overexpression lysate (Cat# [LY408391]) using anti-DDK antibody (Cat# [TA50011-100]). Left: Cell lysates from untransfected HEK293T cells; Right: Cell lysates from HEK293T cells transfected with RC222248 using transfection reagent MegaTran 2.0 (Cat# [TT210002]).