

## Product datasheet for **RC222240**

### **PACRG (NM\_001080378) Human Tagged ORF Clone**

#### Product data:

Product Type:	Expression Plasmids
Product Name:	PACRG (NM_001080378) Human Tagged ORF Clone
Tag:	Myc-DDK
Symbol:	PACRG
Synonyms:	GLUP; HAK005771; PACRG2.1; PARK2CRG
Mammalian Cell Selection:	Neomycin
Vector:	pCMV6-Entry (PS100001)
E. coli Selection:	Kanamycin (25 ug/mL)
ORF Nucleotide Sequence:	>RC222240 ORF sequence Red=Cloning site Blue=ORF Green=Tags(s)

TTTTGTAATACGACTCACTATAGGGCGCCGGGAATTCGTCGACTGGATCCGGTACCGAGGAGATCTGCC  
GCC**CGCATCGCC**

ATGGTGGCAGAAAAGAGACCCTGAGCTTAAACAAATGCCAGACAAGATGCCGAAGAGGACCAAGCTGC  
TGGCACAAACAGCCGCTCCCGGTGCACCAGCCTCACTCTGGTTTCTGAGGGTTTCACAGTCAAAGCCAT  
GATGAAAACCTCAGTCGTGAGAGGCCCTCCAGCTGCAGGGCATTAAAGAAAGACCAACCAAGCCACA  
GCATTTTGAAAATCTATGAGCGAGGTGACTTCCCAATTGCCCTTGAGCATGATTCGAAAGGAAACAAAA  
TCGCCTGGAAGGTAGAAATTGAGAAGCTGGATTACCATCATTATCTGCCTCTGTTTTTTGATGGGCTTTG  
TGAAATGACATTTCCCTATGAGTTTTTTGCTCGGCAAGGAATCCACGACATGCTGGAACACGGTGGGAAC  
AAGATCCTACCTGTCTCCACAGCTCATTATCCCGATAAAAAATGCCTTGAACCTCCGAAACCGACAGG  
TCATCTGTGCACTCTCAAGGTCTCCAGCATCTGGTTGTGTCAGCTGAGATGGTGGGCAAGGCCTTGGT  
GCCTTATTACCGTCAAATCCTCCCTGTCTGAACATCTTTAAGAATATGAATGTGAACCTCCGGAGACGGC  
ATTGACTACAGCCAGCAGAAGAGGGAGAACATTGGGGACTTGATCCAGGAGACACTGGAGGCCTTCGAGC  
GCTACGGAGGAGAAAATGCCTTTATCAACATTAAGTACGTGGTCCCAACCTACGAGTCTTGCTTGCTAA  
C

**ACGCGT**ACGCGGCCGCTCGAGCAGAACTCATCTCAGAAGAGGATCTGGCAGCAAATGATATCCTGGATT  
ACAAGGATGACGACGATAAGGTTTAA



[View online »](#)

**Protein Sequence:** >RC222240 protein sequence  
Red=Cloning site Green=Tags(s)

MVAEKETLSLNKCPDKMPKRTKLLAQQLPVIHQPHSLVSEGFVKAMMKNSVVRGPPAAGAFKERPTKPT  
 AFRKFYERGDFFIALEHDSKGNKIWKVEIEKLDYHHYLPLFFDGLCEMTPPYEFFARQGIHDMLEHGGN  
 KILPVLPLQLIPIKINALNLRNRQVICVTLKVLQHLVVSAAEMVGKALVPYRQILPVLNIFKNMNVNSGDG  
 IDYSQQKRENIGDLIQETLEAFERYGGENAFINIKYVVPTYESCLLN

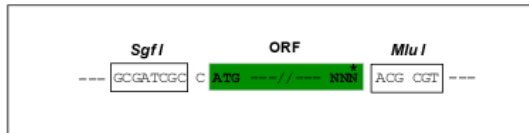
TRTRPLEQKLISEEDLAANDILDYKDDDDKV

**Chromatograms:** [https://cdn.origene.com/chromatograms/mk6348\\_e05.zip](https://cdn.origene.com/chromatograms/mk6348_e05.zip)

**Restriction Sites:** SgfI-MluI

**Cloning Scheme:**

Cloning sites used for ORF Shuttling:



\* The last codon before the Stop codon of the ORF

**ACCN:** NM\_001080378

**ORF Size:** 771 bp

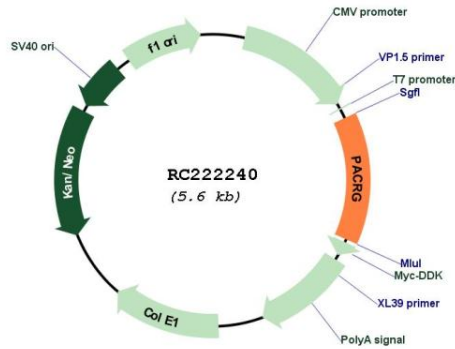
**OTI Disclaimer:** The molecular sequence of this clone aligns with the gene accession number as a point of reference only. However, individual transcript sequences of the same gene can differ through naturally occurring variations (e.g. polymorphisms), each with its own valid existence. This clone is substantially in agreement with the reference, but a complete review of all prevailing variants is recommended prior to use. [More info](#)

**OTI Annotation:** This clone was engineered to express the complete ORF with an expression tag. Expression varies depending on the nature of the gene.

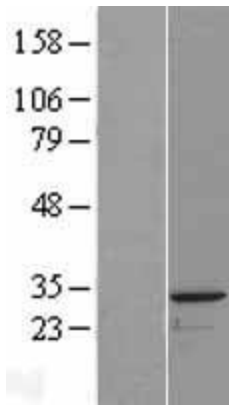
**Components:** The ORF clone is ion-exchange column purified and shipped in a 2D barcoded Matrix tube containing 10ug of transfection-ready, dried plasmid DNA (reconstitute with 100 ul of water).

<b>Reconstitution Method:</b>	<ol style="list-style-type: none"><li>1. Centrifuge at 5,000xg for 5min.</li><li>2. Carefully open the tube and add 100ul of sterile water to dissolve the DNA.</li><li>3. Close the tube and incubate for 10 minutes at room temperature.</li><li>4. Briefly vortex the tube and then do a quick spin (less than 5000xg) to concentrate the liquid at the bottom.</li><li>5. Store the suspended plasmid at -20°C. The DNA is stable for at least one year from date of shipping when stored at -20°C.</li></ol>
<b>RefSeq:</b>	<a href="#">NM_001080378.1</a> , <a href="#">NP_001073847.1</a>
<b>RefSeq Size:</b>	1585 bp
<b>RefSeq ORF:</b>	774 bp
<b>Locus ID:</b>	135138
<b>UniProt ID:</b>	<a href="#">Q96M98</a>
<b>Cytogenetics:</b>	6q26
<b>Protein Families:</b>	Druggable Genome
<b>MW:</b>	29.3 kDa
<b>Gene Summary:</b>	<p>This gene encodes a protein that is conserved across metazoans. In vertebrates, this gene is linked in a head-to-head arrangement with the adjacent parkin gene, which is associated with autosomal recessive juvenile Parkinson's disease. These genes are co-regulated in various tissues and they share a bi-directional promoter. Both genes are associated with susceptibility to leprosy. The parkin co-regulated gene protein forms a large molecular complex with chaperones, including heat shock proteins 70 and 90, and chaperonin components. This protein is also a component of Lewy bodies in Parkinson's disease patients, and it suppresses unfolded Pael receptor-induced neuronal cell death. Multiple transcript variants encoding different isoforms have been found for this gene. [provided by RefSeq, Jul 2008]</p>

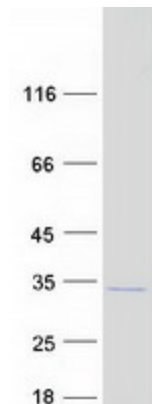
Product images:



Circular map for RC222240



Western blot validation of overexpression lysate (Cat# [LY421606]) using anti-DDK antibody (Cat# [TA50011-100]). Left: Cell lysates from untransfected HEK293T cells; Right: Cell lysates from HEK293T cells transfected with RC222240 using transfection reagent MegaTran 2.0 (Cat# [TT210002]).



Coomassie blue staining of purified PACRG protein (Cat# [TP322240]). The protein was produced from HEK293T cells transfected with PACRG cDNA clone (Cat# RC222240) using MegaTran 2.0 (Cat# [TT210002]).